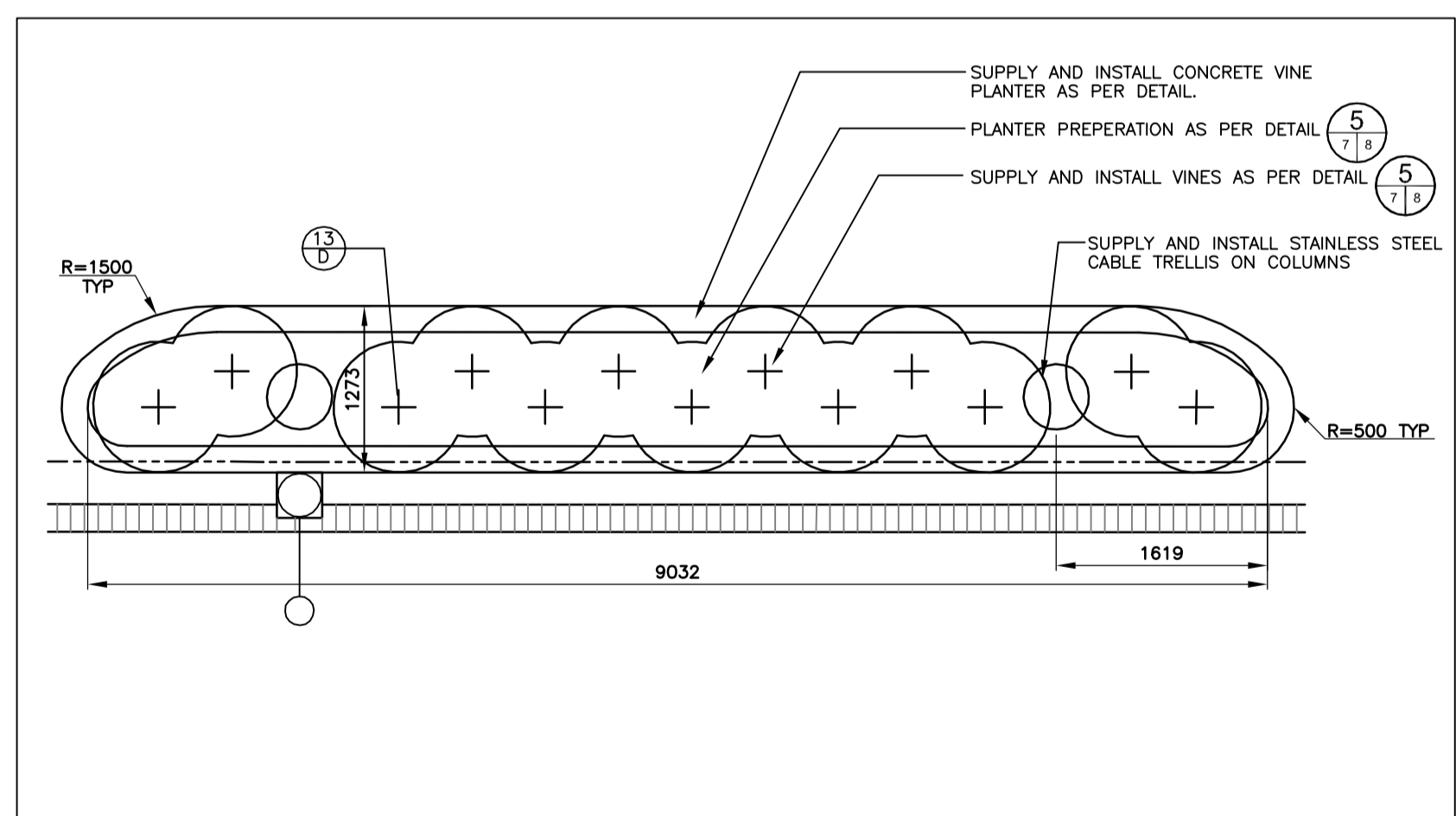
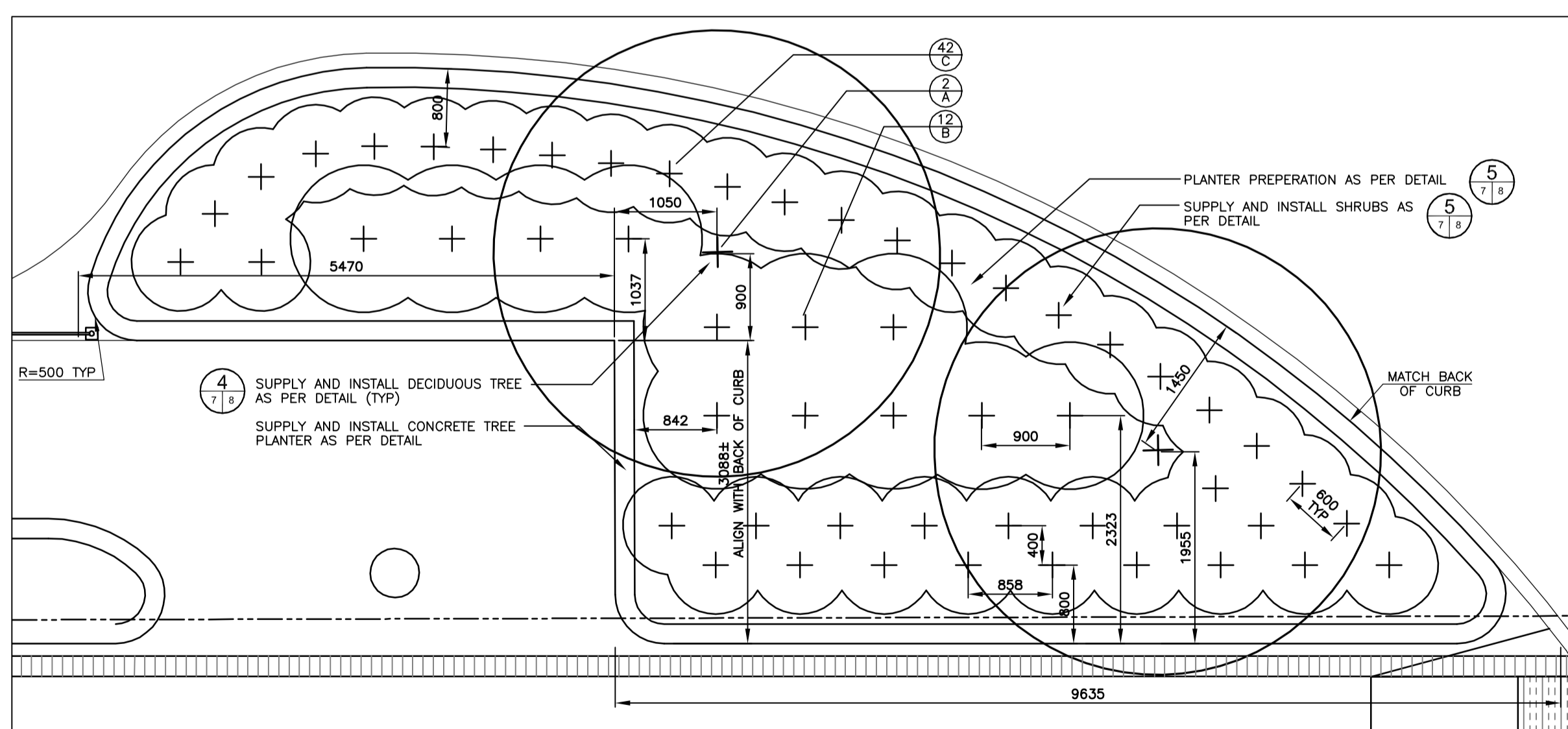


**LANDSCAPE PLAN**  
SCALE 1:150



**ENLARGEMENT 1 - RAISED PLANTER (TWO PLANTERS)**  
SCALE 1:50



**ENLARGEMENT 2 - RAISED PLANTER WITH TREE**  
SCALE 1:50

- NOTES**
- CONTRACTOR TO CONFIRM ALL DIMENSIONS AND REPORT ANY DISCREPANCIES TO CONTRACT ADMINISTRATOR PRIOR TO CONSTRUCTION.
  - PLANTING BED LAYOUT TO BE APPROVED BY PROJECT LANDSCAPE ARCHITECT PRIOR TO ANY CONSTRUCTION.
  - ALL DIMENSIONS ARE IN METRIC UNLESS OTHERWISE NOTED.

**PLANT LIST**

KEY	QTY	COMMON NAME/BOTANICAL NAME	SIZE	REMARKS
<b>DECIDUOUS TREES</b>				
A	2	DISCOVERY ELM / ULMUS DAVIDIANA	90mm cal.	SPECIMEN, B&B, MACHINE DUG WITH MIN. 10 BRANCHES IN WELL BRANCHED HEAD, STRAIGHT TRUNK, MIN. HT. 6500mm, BRANCHING HT. 1800mm.
<b>DECIDUOUS SHRUBS</b>				
B	12	SUMMER WINE NINEBARK / PHYSOCARPUS OPULIFOLIUS 'SEWARD'	3 GAL. POT	SPECIMEN, CONTAINER GROWN, WITH MINIMUM 3 STALKS IN WELL BRANCHED PLANT, MIN. 900mm HT.
C	42	SNOW PAVEMENT ROSE / ROSA X 'SNOW PAVEMENT'	2 GAL. POT	SPECIMEN, CONTAINER GROWN, WITH MINIMUM 3 STALKS IN WELL BRANCHED PLANT, MIN. 450mm HT.
<b>DECIDUOUS SHRUBS</b>				
D	26	VIRGINIA CREEPER / PARTHENOISSUS QUINQUEFOLIA	1 GAL. POT	SPECIMEN, CONTAINER GROWN, WITH MINIMUM 3 STALKS IN WELL BRANCHED PLANT, MIN. 300mm HT.

**LEGEND**

	UNIT PAVER		PROPOSED DECIDUOUS TREE
	UNIT PAVER BAND		PROPOSED SHRUBS/VINES
	DETECTABLE WARNING TILE		PLANT KEY
			QUANTITY PLANT KEY

**UNDERGROUND STRUCTURES**

SUPPLY, U/G STRUCTURES COMMITTEE		DATE

**NOTE:**  
LOCATION OF UNDERGROUND STRUCTURES AS SHOWN ARE BASED ON THE BEST INFORMATION AVAILABLE BUT NO GUARANTEE IS GIVEN THAT ALL EXISTING UTILITIES ARE SHOWN OR THAT THE GIVEN LOCATIONS ARE EXACT. CONFIRMATION OF EXISTENCE AND EXACT LOCATION OF ALL SERVICES MUST BE OBTAINED FROM THE INDIVIDUAL UTILITIES BEFORE PROCEEDING WITH CONSTRUCTION.

NO.	REVISIONS	DATE	BY
2	ISSUED FOR TENDER	7/31/09	JW
1	ISSUED FOR REVIEW	7/15/09	JW

DESIGNED BY: JW

DRAWN BY: MD/JW

CHECKED BY: JW

APPROVED BY:

HOR. SCALE: AS NOTED

VERTICAL:

RELEASED FOR CONSTRUCTION

DATE:

JULY 15, 2009

DILLON CONSULTING

the manitoba association of landscape architects

JACQUELINE L. WILKIE member no. 75

ORIGINALLY STAMPED BY JACKIE WILKIE 7/31/09

CONSULTANT PROJECT NO. 09-003

**THE CITY OF WINNIPEG TRANSIT DEPARTMENT**

**BALMORAL TRANSIT TERMINAL**

CITY DRAWING NUMBER: P-3313-07

SHEET 07 OF 10

**LANDSCAPE LAYOUT & PLANTING PLAN**

BID OPPORTUNITY NUMBER: 540-2009