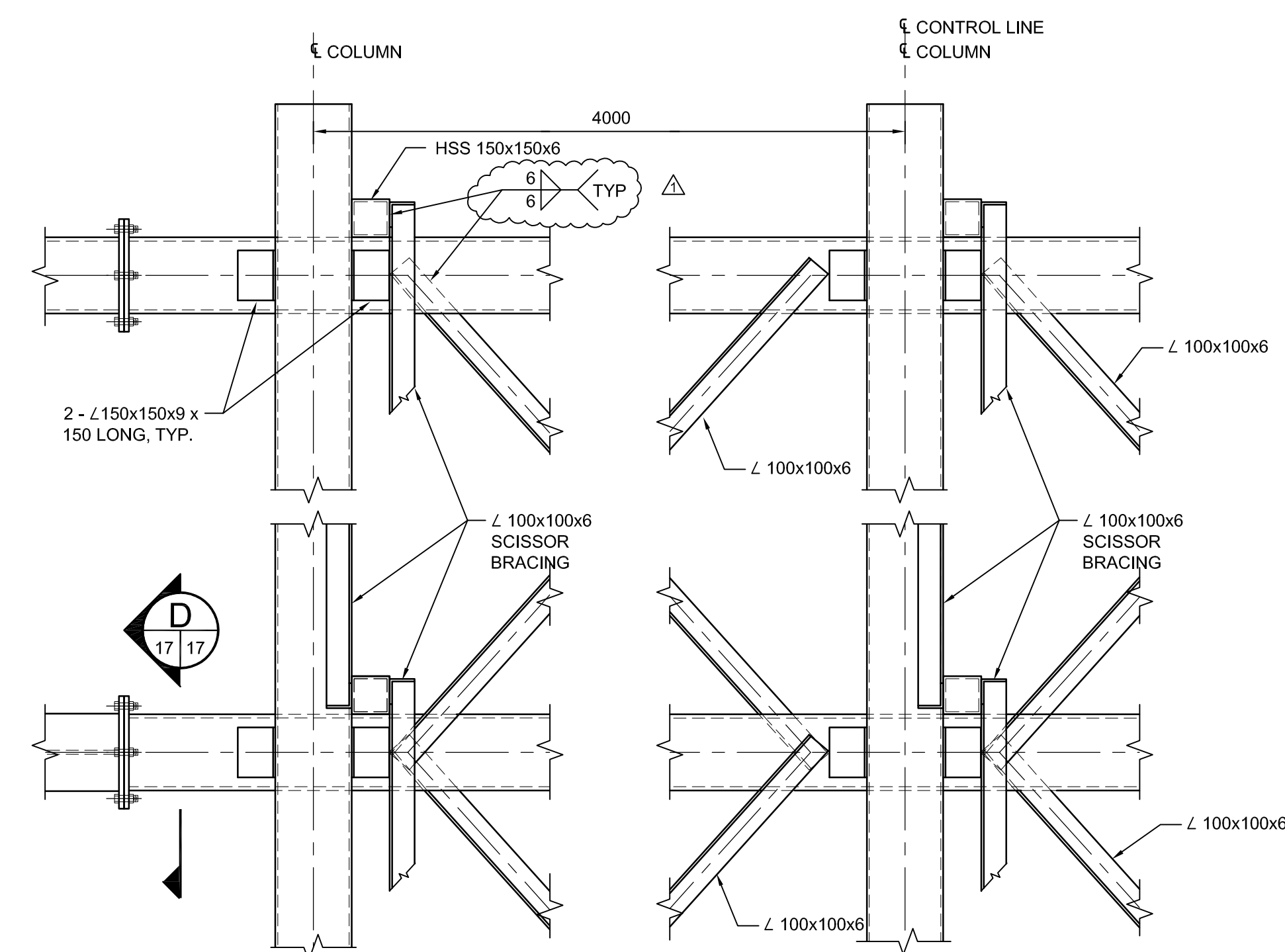
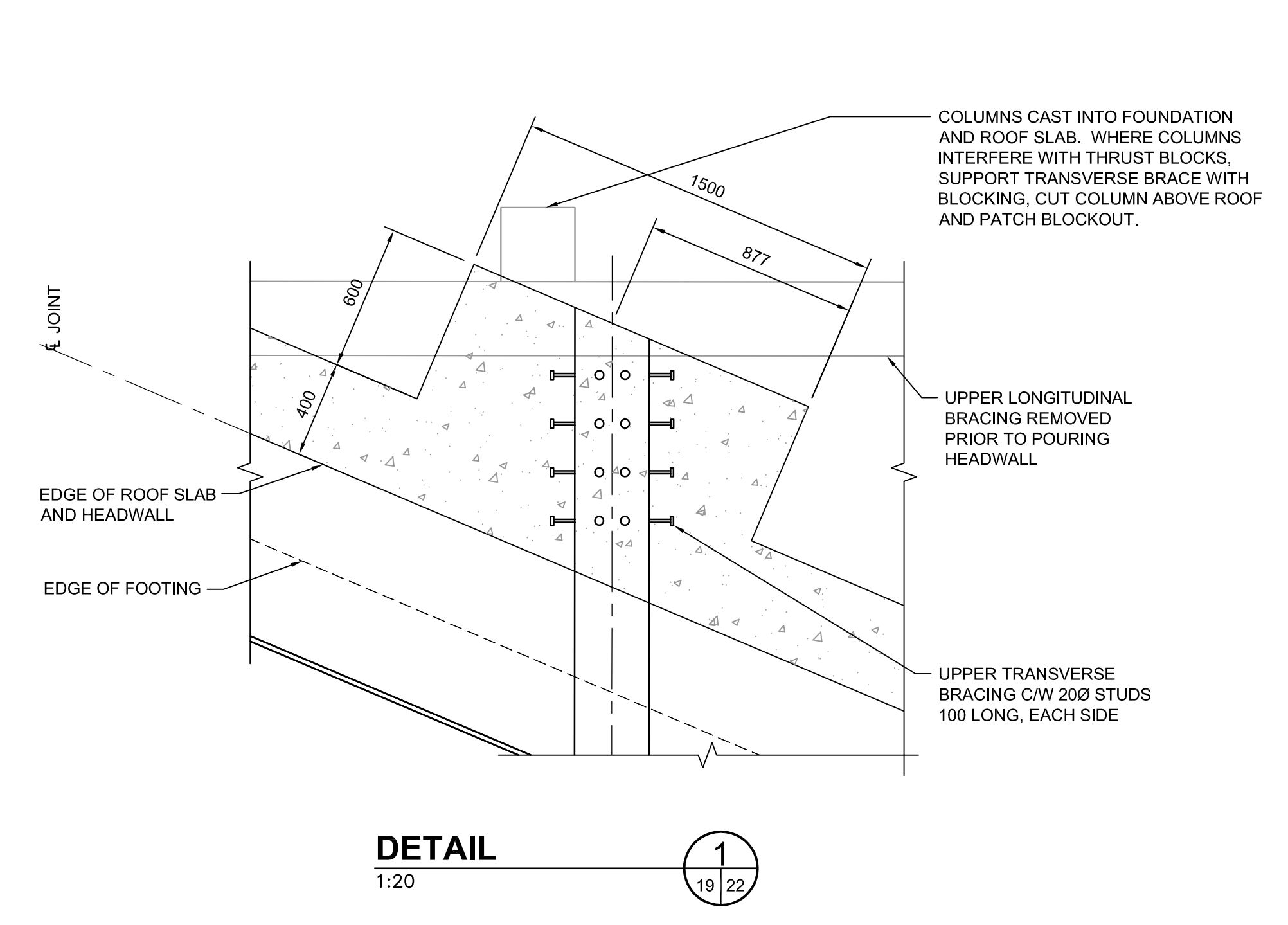


SECTION A
1:20
20 22

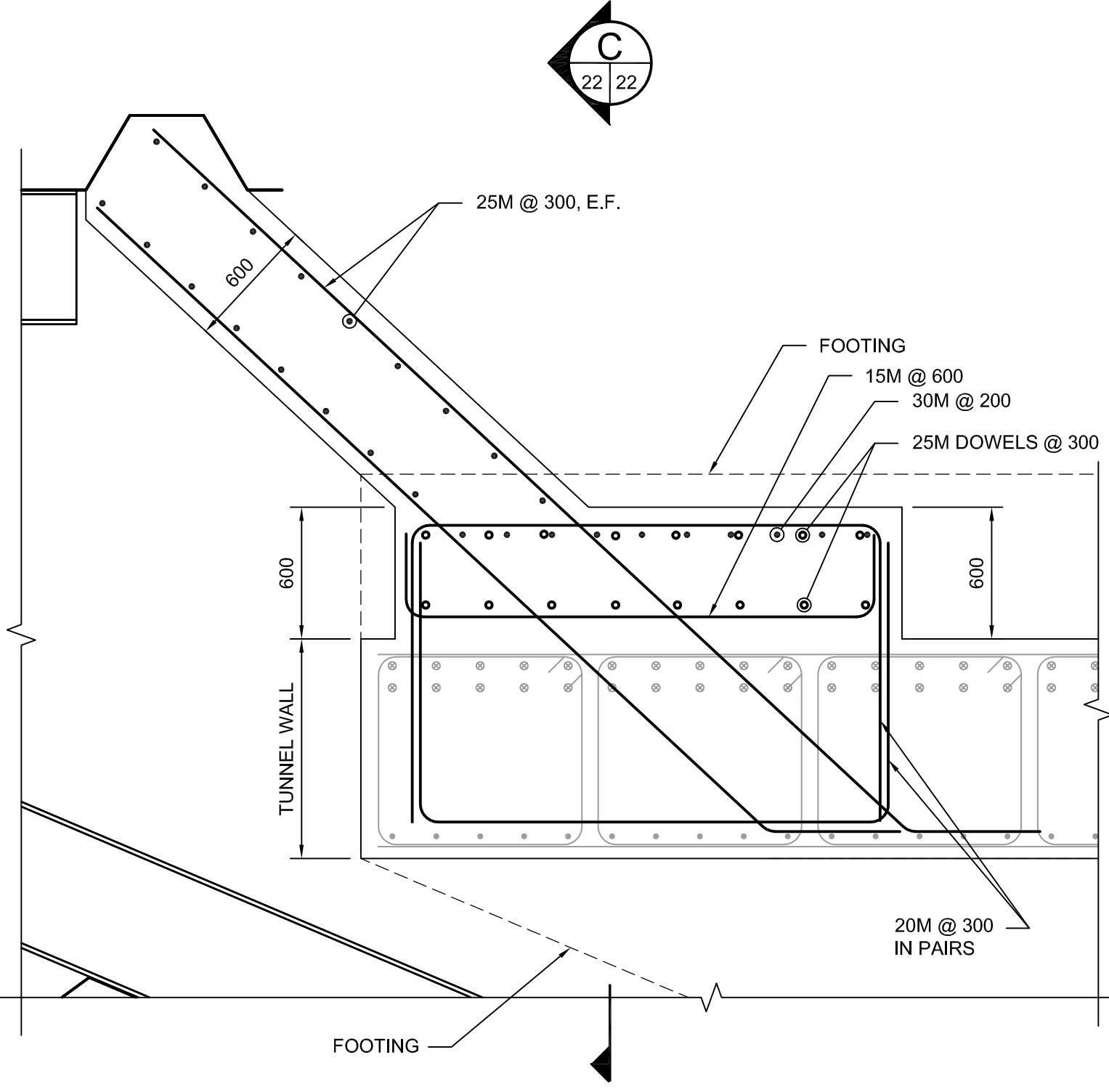


SECTION B
1:20
20 22

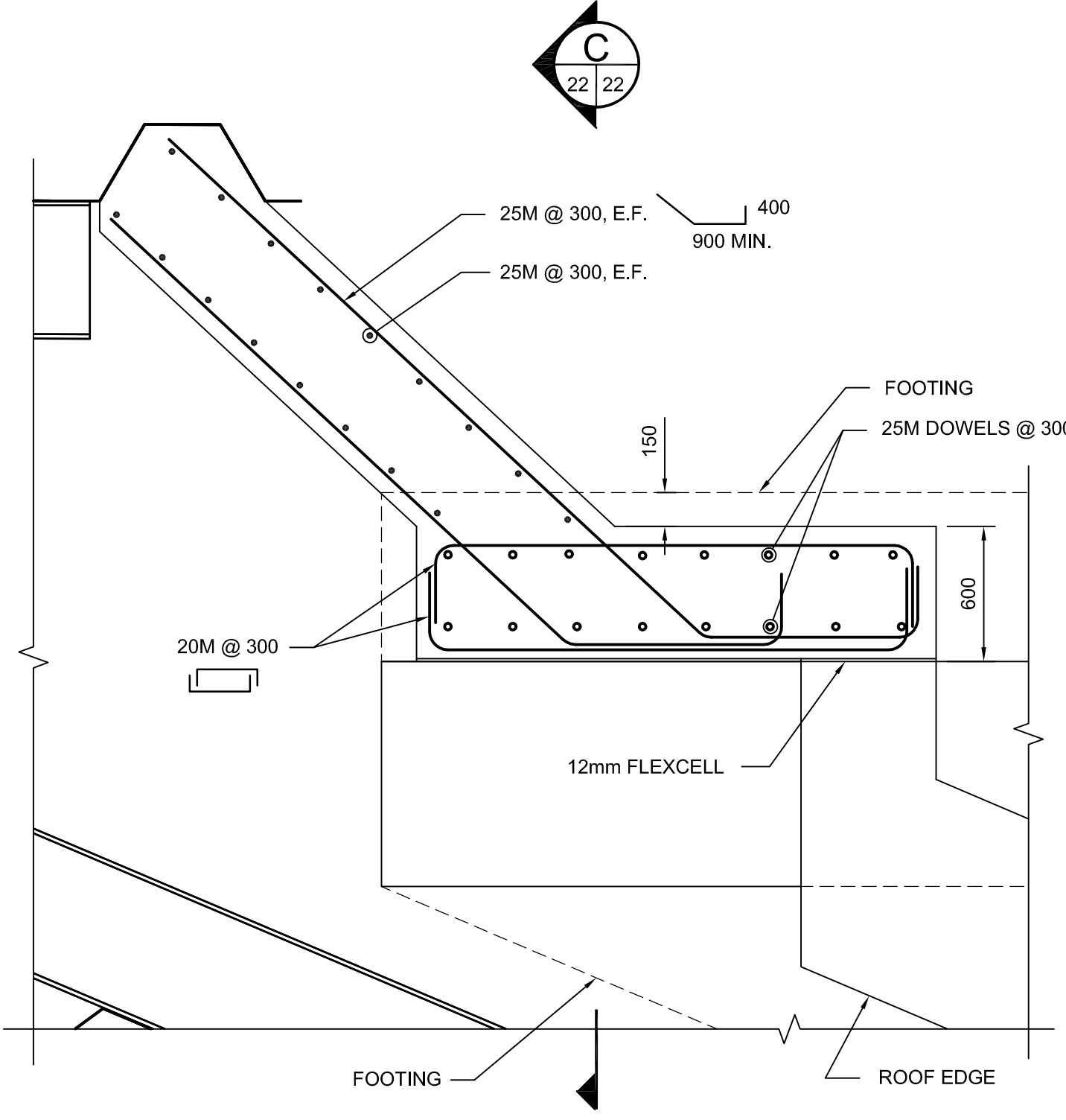


DETAIL 1
1:20
19 22

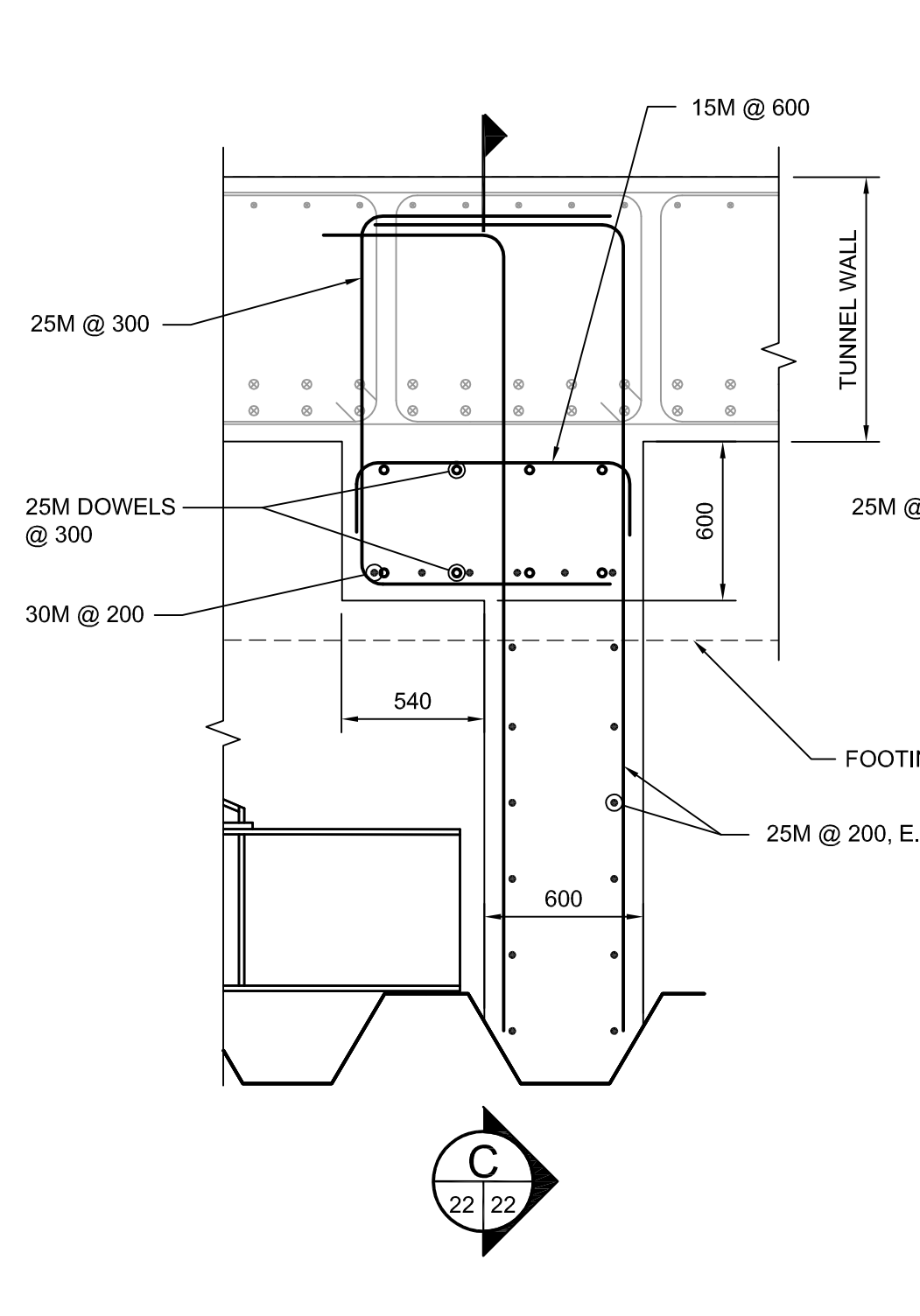
NOTE:
• SECTIONS SHOWING TOP & MIDDLE BRACE ONLY. BOTTOM BRACE SIMILAR.
• SCISSOR BRACING BETWEEN MID & TOP BRACES TO BE REMOVED PRIOR TO ROOF POUR.



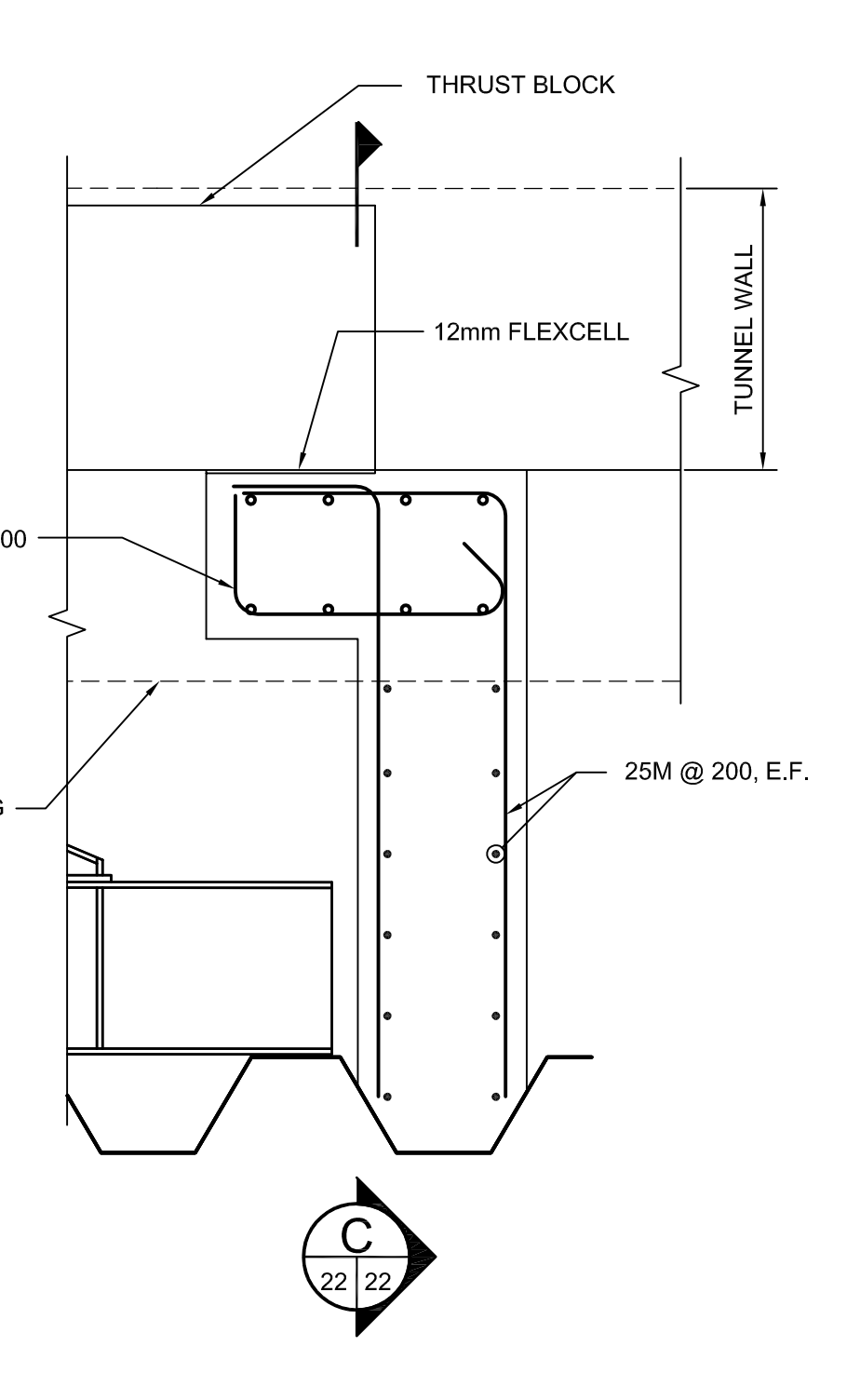
DETAIL BELOW T.O. WALL 2
1:25
19 22



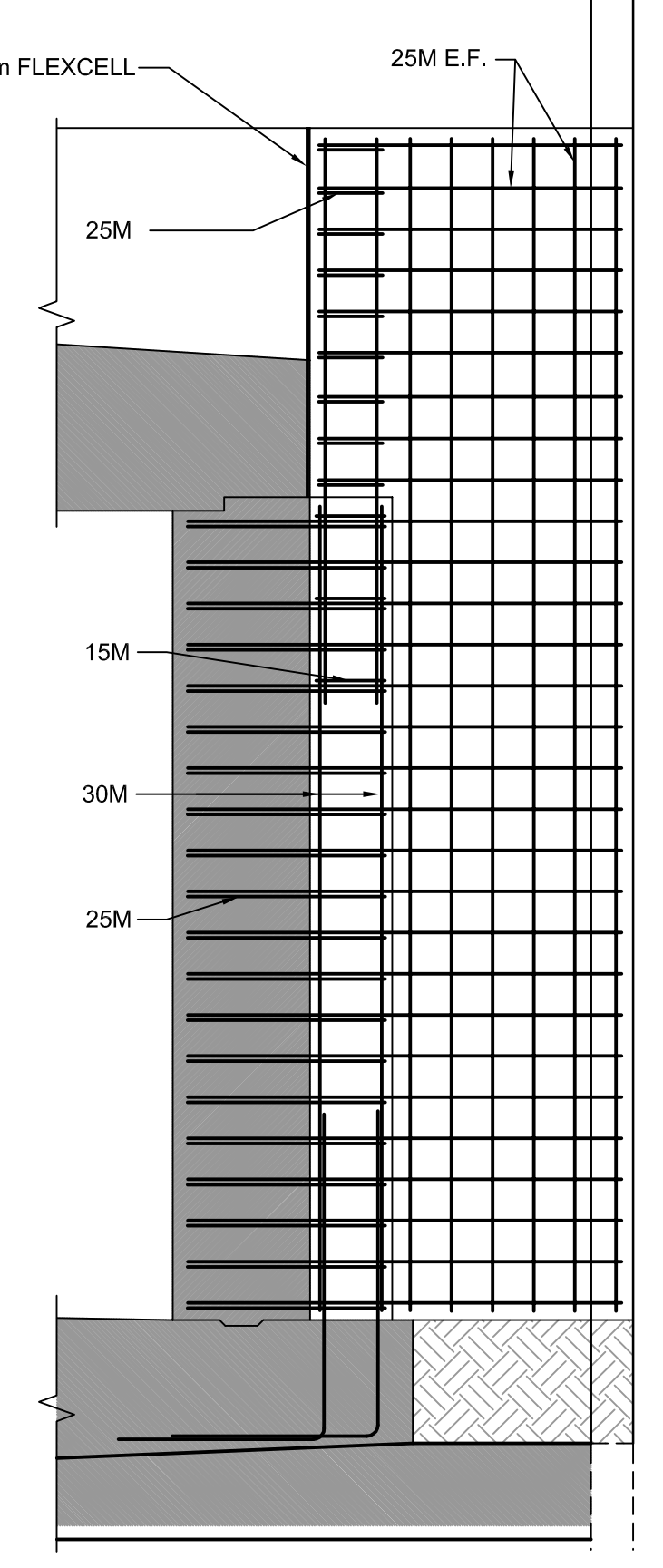
DETAIL ABOVE ROOF 2
1:25
19 22



DETAIL BELOW T.O. WALL 3
1:25
19 22



DETAIL ABOVE ROOF 3
1:25
19 22



SECTION C
1:50
22 22

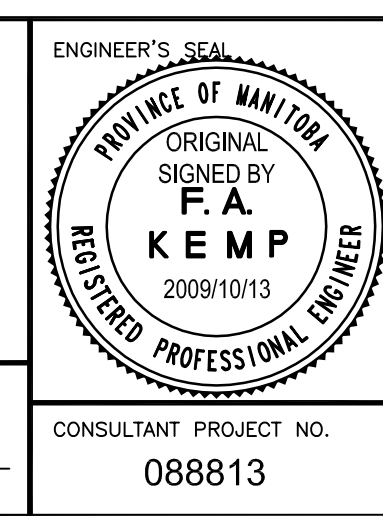
L:\work\112000\112009\02c-cad\Proj_Drawings\STR\CONTR\577-2009_STRUCTURAL_DETAILS_SHEET_2_OF_2_C4S1010-T-R0.dwg



DO NOT SCALE THIS DOCUMENT. ALL MEASUREMENTS MUST BE OBTAINED FROM STATED DIMENSIONS. This drawing has been prepared for the use of AECOM's client and may not be used, reproduced or relied upon by third parties, except as agreed by AECOM and its client, as required by law or for use by governmental reviewing agencies. AECOM accepts no responsibility, and denies any liability whatsoever, to any party that modifies this drawing without AECOM's express written consent.

LOCATION UNDERGROUND	APPROVED STRUCTURES	B.M. ELEV.
SUPV. U/G STRUCTURES COMMITTEE	DATE	
NOTE: LOCATION OF UNDERGROUND STRUCTURES AS SHOWN ARE BASED ON THE BEST INFORMATION AVAILABLE BUT NO GUARANTEE IS GIVEN THAT ALL EXISTING UTILITIES ARE SHOWN OR THAT THE GIVEN LOCATIONS ARE EXACT. CONFIRMATION OF EXISTENCE AND EXACT LOCATION OF ALL SERVICES MUST BE OBTAINED FROM THE INDIVIDUAL UTILITIES BEFORE PROCEEDING WITH CONSTRUCTION.		
1	ISSUED FOR ADDENDUM 4	11.04.2009 KAA
0	ISSUED FOR TENDER	10.13.2009 KAA
NO.	REVISIONS	DATE BY

DESIGNED BY	FK
DRAWN BY	CAA
CHECKED BY	RE/KC
APPROVED BY	EBL
HOR. SCALE	AS NOTED
VERTICAL	
DATE	2009.10.13



THE CITY OF WINNIPEG TRANSIT DEPARTMENT	
SOUTHWEST RAPID TRANSIT CORRIDOR - STAGE 1 TRANSITWAY TUNNEL AT CN RIVER SUBDIVISION MILEAGE 1.38 & ASSOCIATED WORKS	
CITY DRAWING NUMBER U237-09-22	SHEET OF 22 OF 73
STRUCTURAL DETAILS SHEET 2 OF 2	
CONSULTANT PROJECT NO. 088813	CONSULTANT DRAWING NUMBER C4-S1010-T