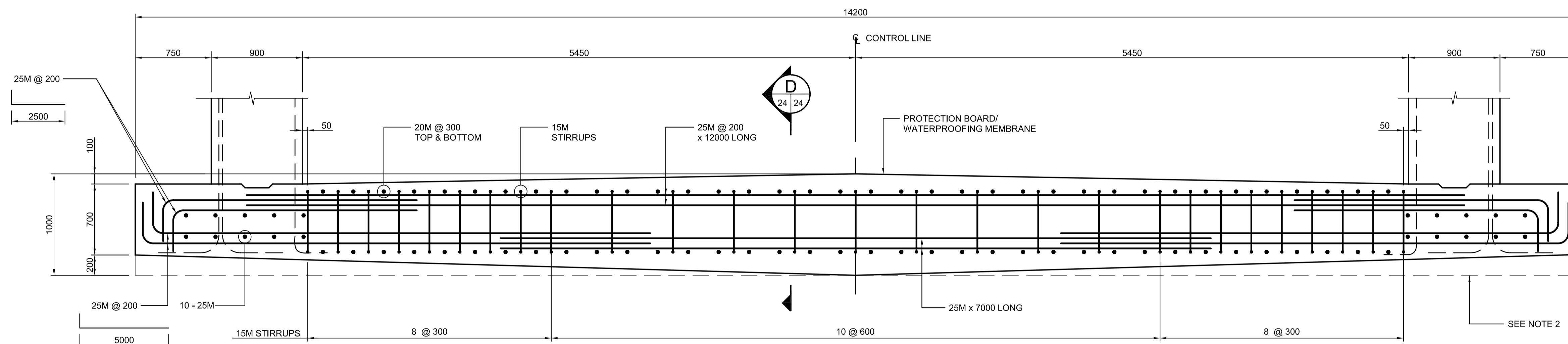
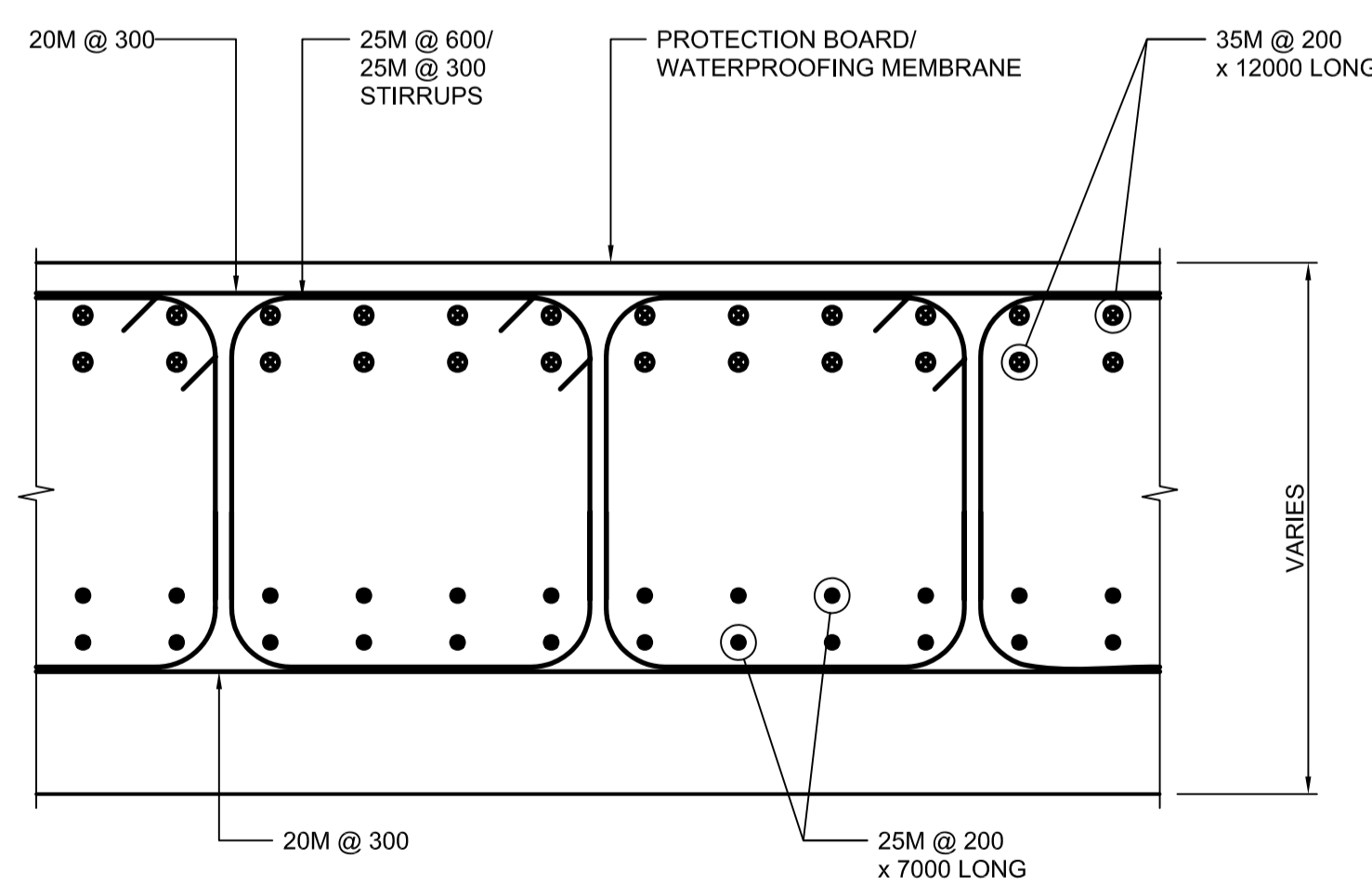


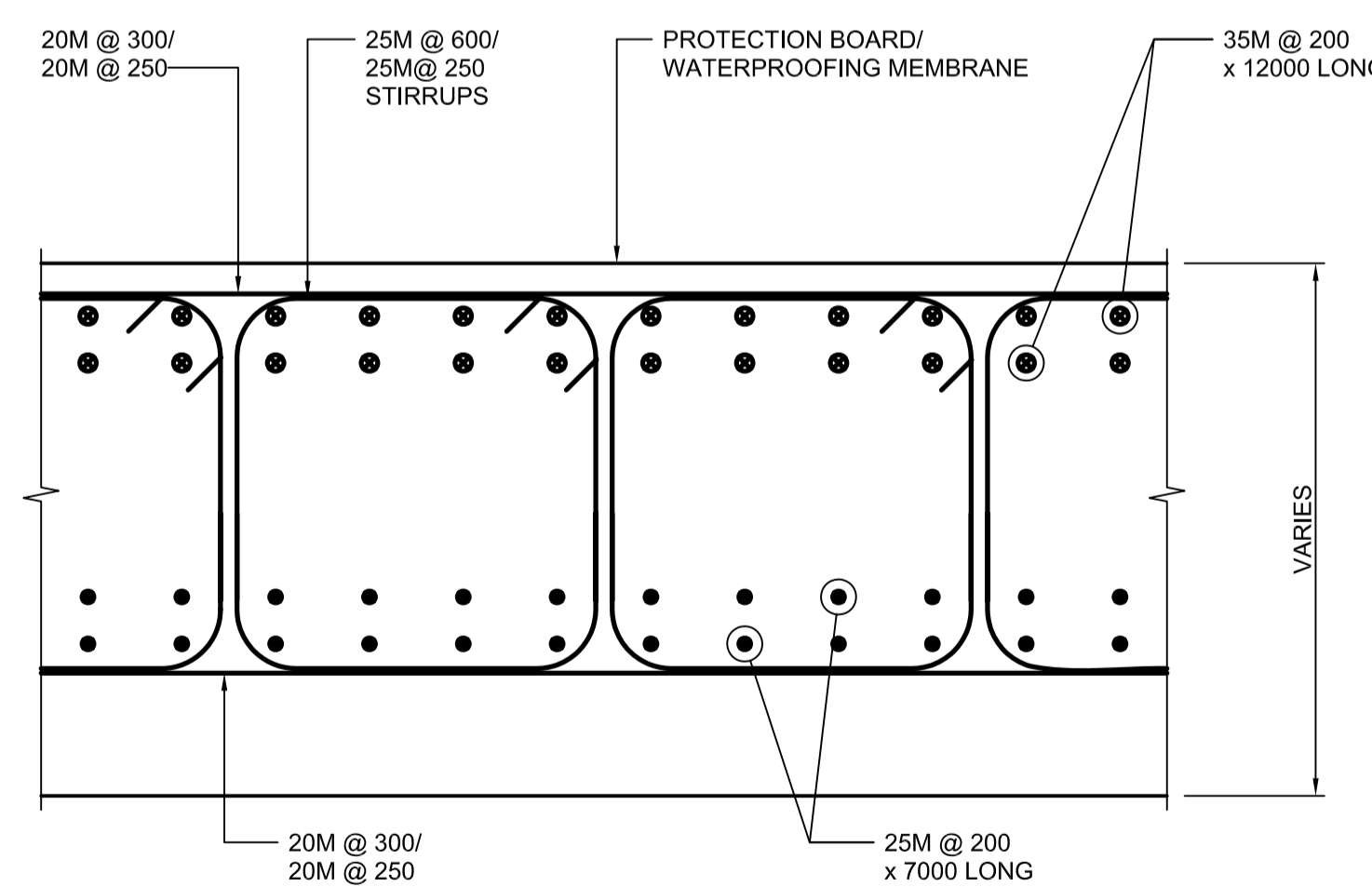
**SEGMENT TYPE C**  
SCALE 1:25



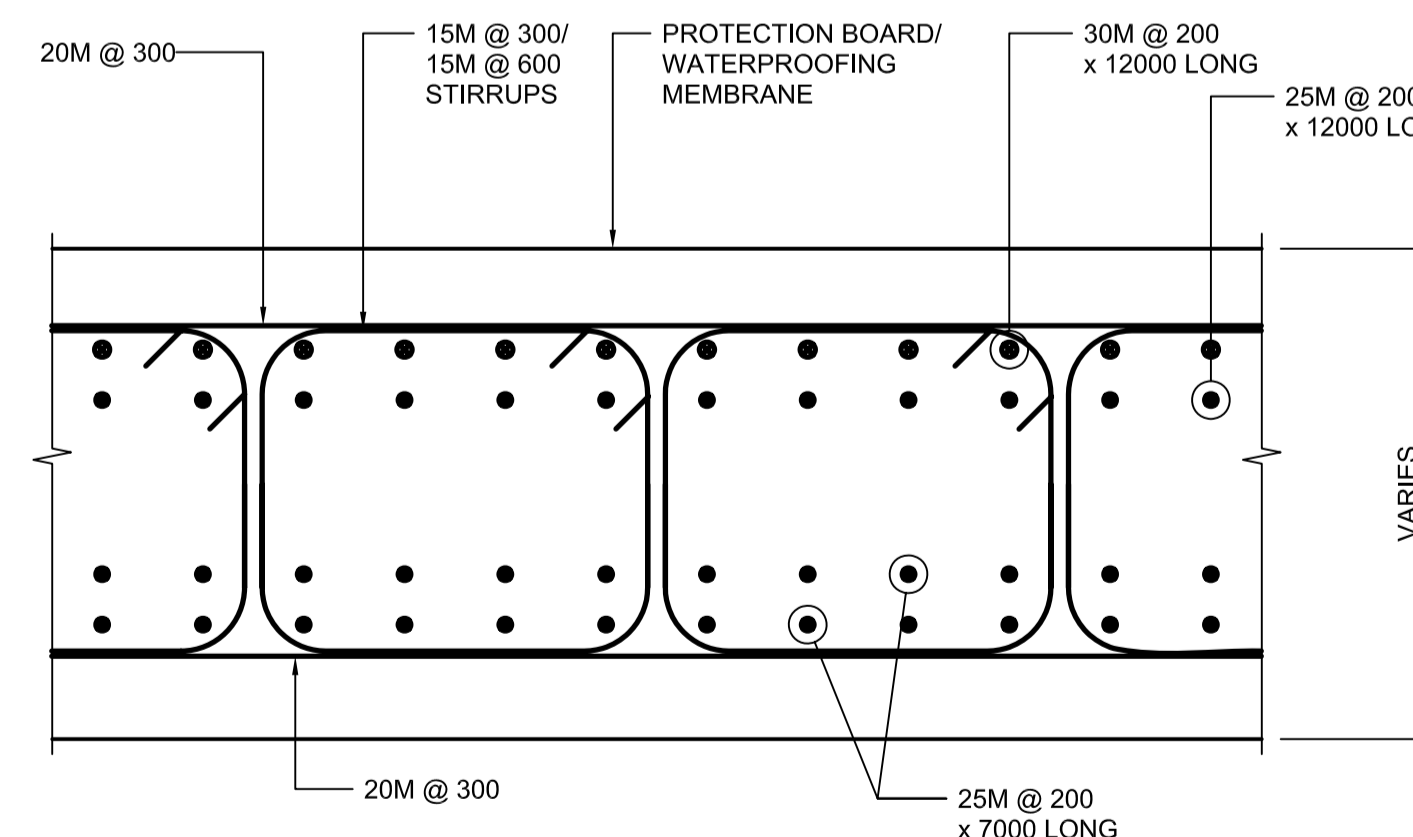
**SEGMENT TYPE D**  
SCALE 1:25



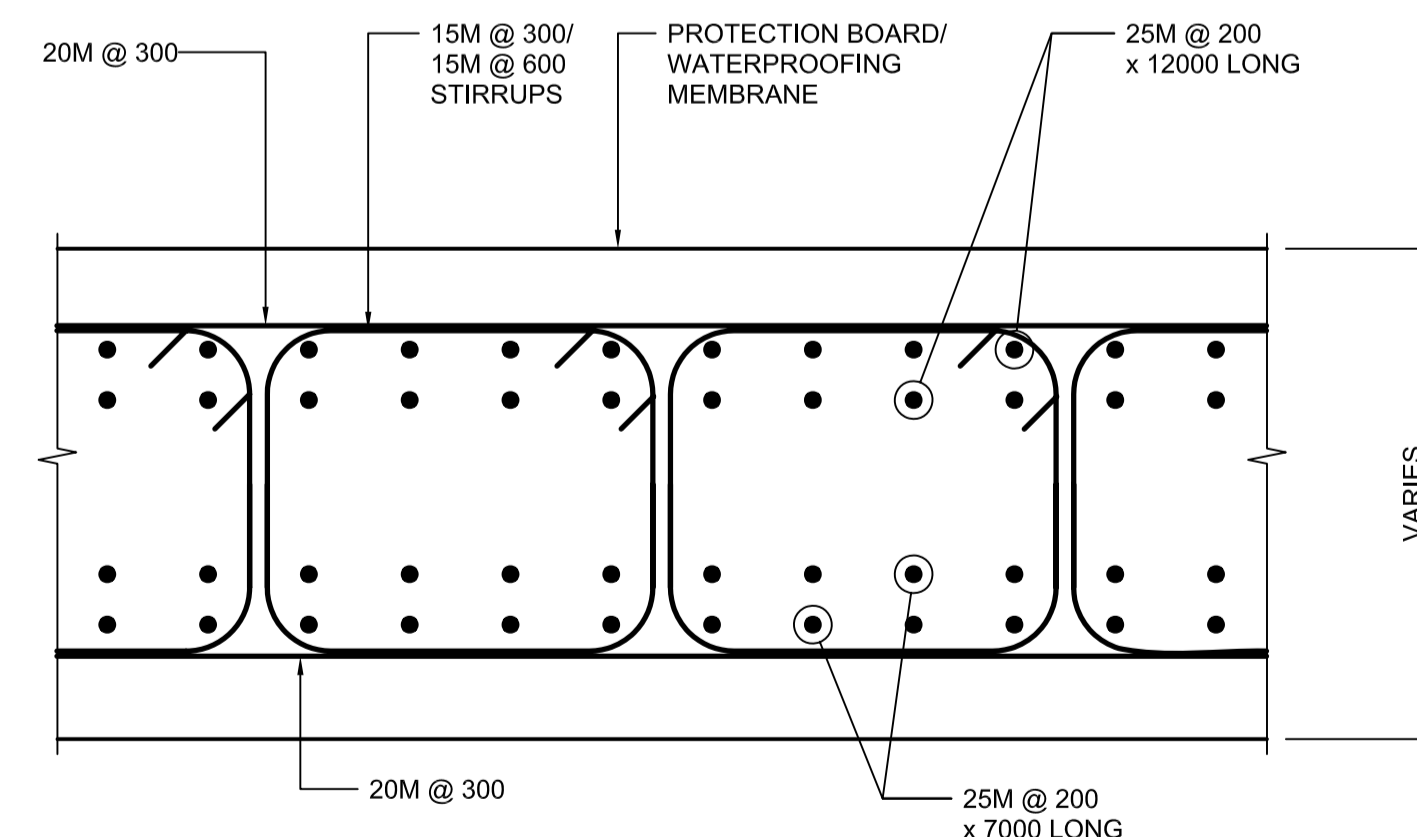
**SECTION A**  
SCALE 1:15



**SECTION B**  
SCALE 1:15



**SECTION C**  
SCALE 1:15



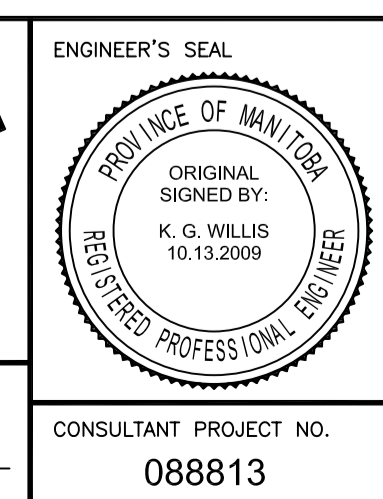
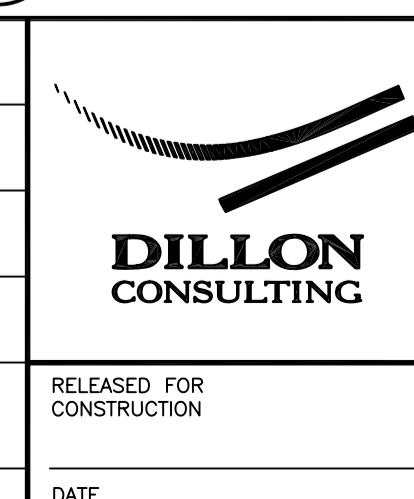
**SECTION D**  
SCALE 1:15

- NOTES:
1. STAGGERED MECHANICAL COUPLERS OR LAP SPLICES MAY BE ADDED TO FACILITATE BAR PLACEMENT AROUND SHORING. SUBMIT PROPOSED SPLICE AND COUPLER LAYOUT FOR REVIEW BEFORE DETAILING REINFORCEMENT.
  2. CONTRACTOR MAY ELECT TO PLACE UNDERSIDE OF SLAB LEVEL AS SHOWN. BOTTOM REINFORCEMENT LOCATION AND STIRRUP DEPTH SHALL BE ADJUSTED TO SUIT THE RESULTING MINIMUM SLAB THICKNESS.
  3. CONTRACTOR MAY ELECT TO REPLACE THE CLOSED STIRRUPS SHOWN WITH CONVENTIONAL OPEN STIRRUPS c/w 2-135 DEGREE HOOKS. HOOKS MAY BE PLACED AT TOP OR BOTTOM OF SLAB.



LOCATION UNDERGROUND	APPROVED STRUCTURES	B.M. ELEV.
SUPY. U/G STRUCTURES COMMITTEE	DATE	
NOTE: LOCATION OF UNDERGROUND STRUCTURES AS SHOWN ARE BASED ON THE BEST INFORMATION AVAILABLE BUT NO GUARANTEE IS GIVEN THAT ALL EXISTING UTILITIES ARE SHOWN OR THAT THE GIVEN LOCATIONS ARE EXACT. CONFIRMATION OF EXISTENCE AND EXACT LOCATION OF ALL SERVICES MUST BE OBTAINED FROM THE INDIVIDUAL UTILITIES BEFORE PROCEEDING WITH CONSTRUCTION.		
1	ISSUED WITH ADDENDUM #4	11/04/2009 RCB
0	ISSUED FOR TENDER	10/13/2009 RCB
NO.	REVISIONS	DATE BY

DESIGNED BY	DRAWN BY	CHECKED BY	APPROVED BY	HOR. SCALE	VERTICAL SCALE
KGW	RCB	KGW	DPK	AS SHOWN	AS SHOWN
DATE 2009/06/24					



**THE CITY OF WINNIPEG**  
TRANSIT DEPARTMENT

**Winnipeg**

SOUTHWEST RAPID TRANSIT CORRIDOR - STAGE 1  
TRANSITWAY TUNNEL AT CN RIVERS SUBDIVISION  
MILEAGE 1.38 & ASSOCIATED WORKS

FOUNDATION DETAILS

CITY DRAWING NUMBER: U237-09-24  
SHEET 24 OF 73  
CONSULTANT DRAWING NUMBER: C4-S1101-T

G:\csc\088813\Contract\Contract\_1\Current\C4-S1101-P.dwg