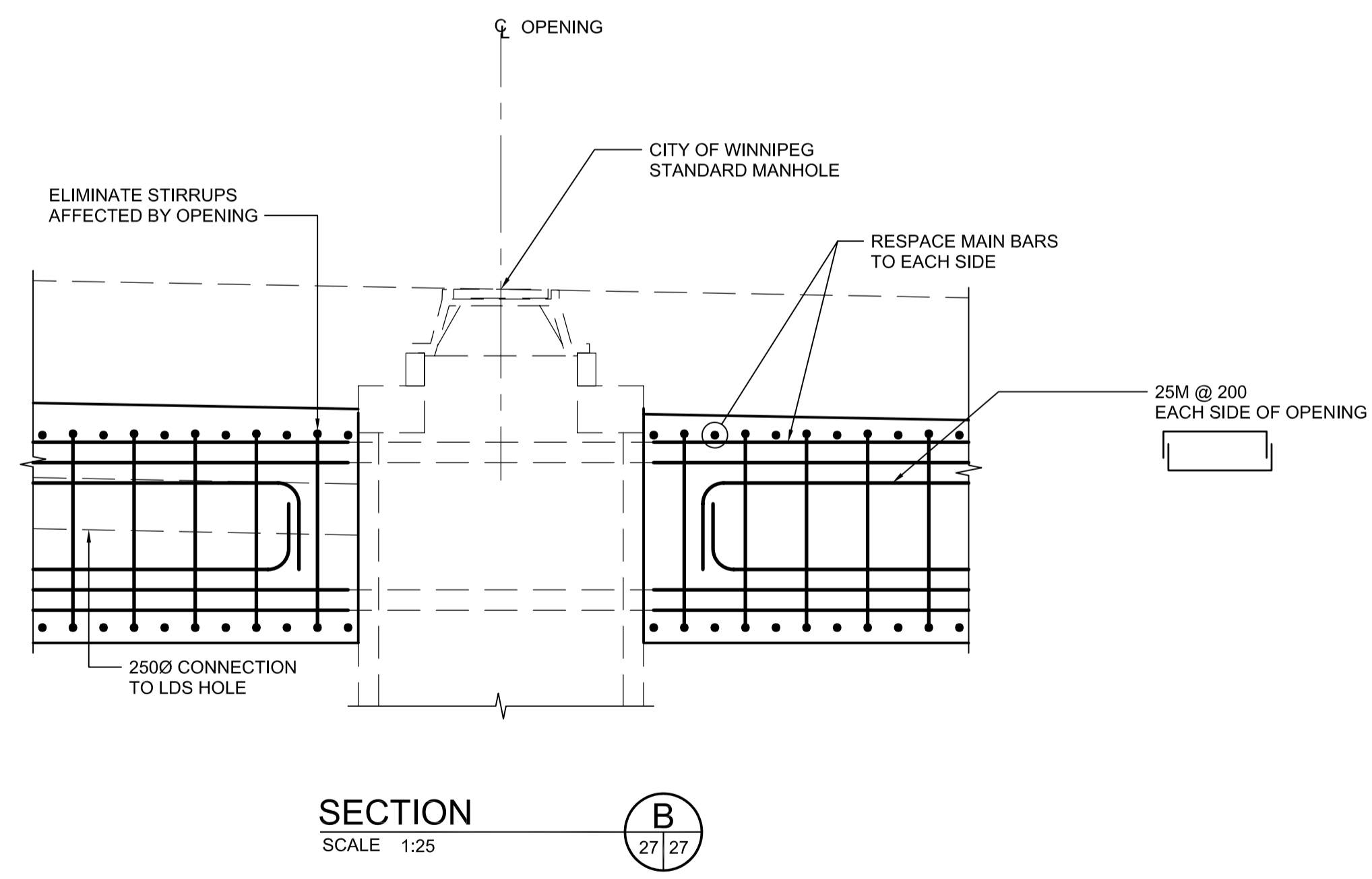
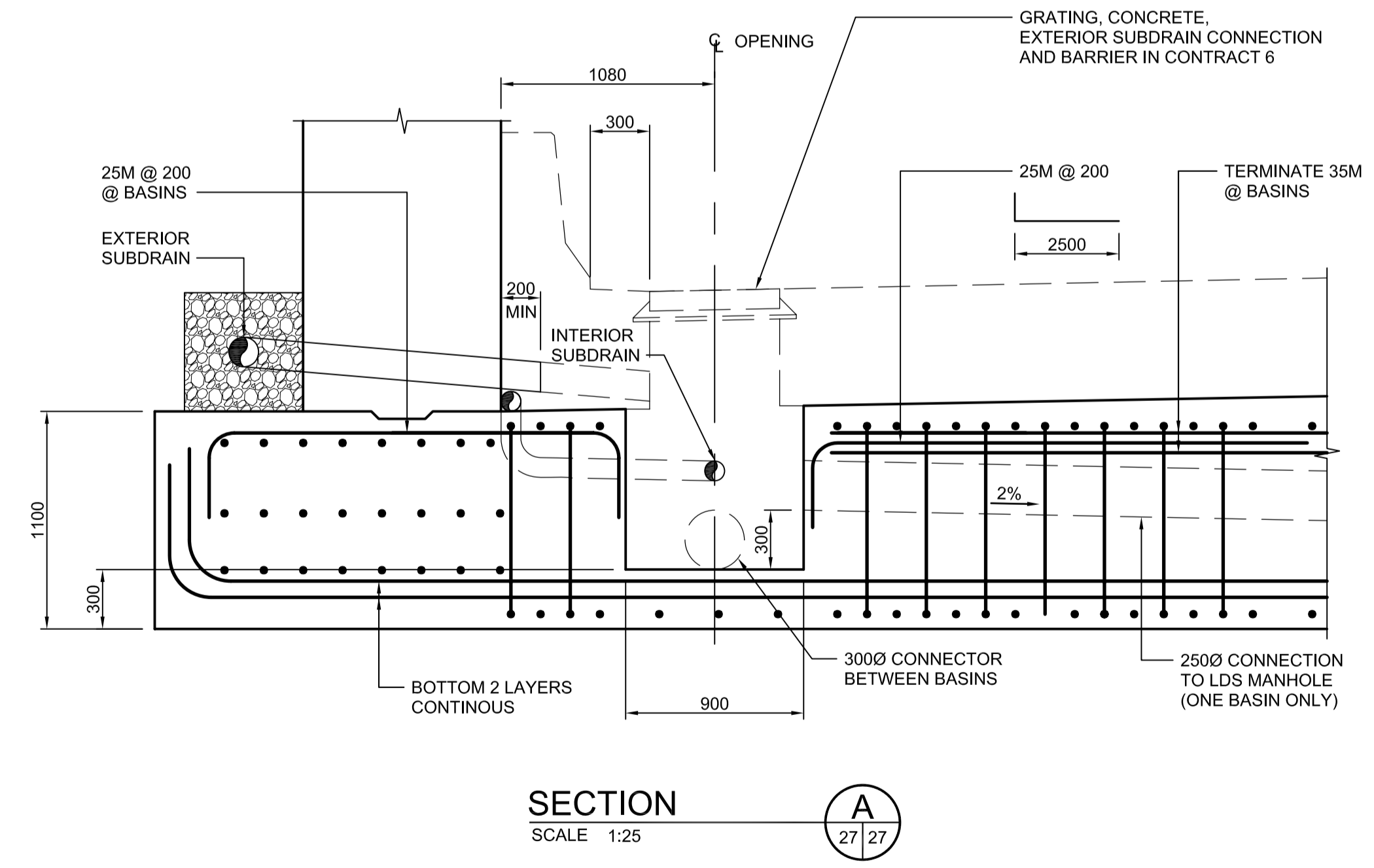


CATCHBASIN LOCATIONS			
LOCATION	STATION	OFFSET	ORIENTATION
TUNNEL	11+862.700	5.00	EAST SIDE
	11+867.800	5.00	WEST SIDE
RETAINING WALL	11+761.442	5.225	EAST SIDE
	11+761.442	-5.225	WEST SIDE
	11+972.150	5.00	EAST SIDE

MANHOLE LOCATIONS				
LOCATION	NUMBER	STATION	OFFSET	ORIENTATION
TUNNEL	MH31A	11+874.000	2.255	EAST SIDE
	MH31A	11+874.000	2.255	EAST SIDE
	MH32A	11+936.614	1.922	EAST SIDE
RETAINING WALL	MH18	11+765.000	2.255	EAST SIDE
	MH32	11+972.150	2.255	EAST SIDE

NOTES:  
 1. CATCH BASINS AT RETAINING WALL TO USE STANDARD PRECAST CATCH BASIN UNITS. ARRANGE REINFORCEMENT SIMILAR TO MANHOLE DETAIL SHOWN.

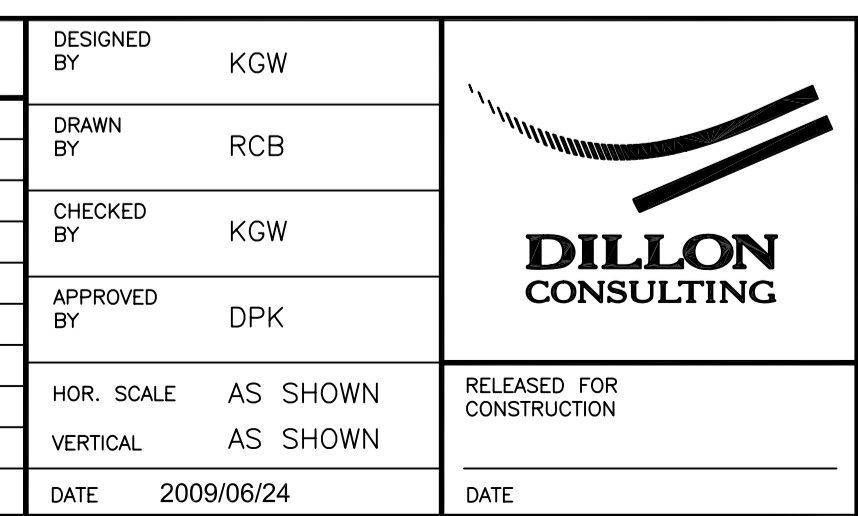


G:\csm\088813\Contract\Contract\_1\Current\C4-S1104-P.dwg



LOCATION UNDERGROUND	APPROVED STRUCTURES	B.M. ELEV.	DESIGNED BY KGW
SUPV. U/G STRUCTURES COMMITTEE	DATE		DRAWN BY RCB
NOTE:			CHECKED BY KGW
LOCATION OF UNDERGROUND STRUCTURES AS SHOWN ARE BASED ON THE BEST INFORMATION AVAILABLE. BUT NO GUARANTEE IS GIVEN THAT ALL EXISTING UTILITIES ARE SHOWN OR THAT THE GIVEN LOCATIONS ARE EXACT. CONFIRMATION OF EXISTENCE AND EXACT LOCATION OF ALL SERVICES MUST BE OBTAINED FROM THE INDIVIDUAL UTILITIES BEFORE PROCEEDING WITH CONSTRUCTION.			APPROVED BY DPK
1	ISSUED WITH ADDENDUM #1	10/28/2009	RCB
0	ISSUED FOR TENDER	10/13/2009	RCB
NO.	REVISIONS	DATE	BY
		2009/06/24	

DESIGNED BY KGW	ENGINEER'S SEAL
DRAWN BY RCB	PROVINCE OF MANITOBA ORIGINAL SIGNED BY: K. G. WILLIS 10.13.2009 REGISTERED PROFESSIONAL ENGINEER
CHECKED BY KGW	
APPROVED BY DPK	
HOR. SCALE AS SHOWN	RELEASED FOR CONSTRUCTION
VERTICAL AS SHOWN	
DATE 2009/06/24	CONSULTANT PROJECT NO. 088813



**THE CITY OF WINNIPEG TRANSIT DEPARTMENT**

SOUTHWEST RAPID TRANSIT CORRIDOR - STAGE 1  
 TRANSITWAY TUNNEL AT CN RIVERS SUBDIVISION  
 MILEAGE 1.38 & ASSOCIATED WORKS

CITY DRAWING NUMBER: U237-09-27  
 SHEET 27 OF 73  
 CONSULTANT DRAWING NUMBER: C4-S1104-T

MANHOLE AND CATCHBASIN DETAILS