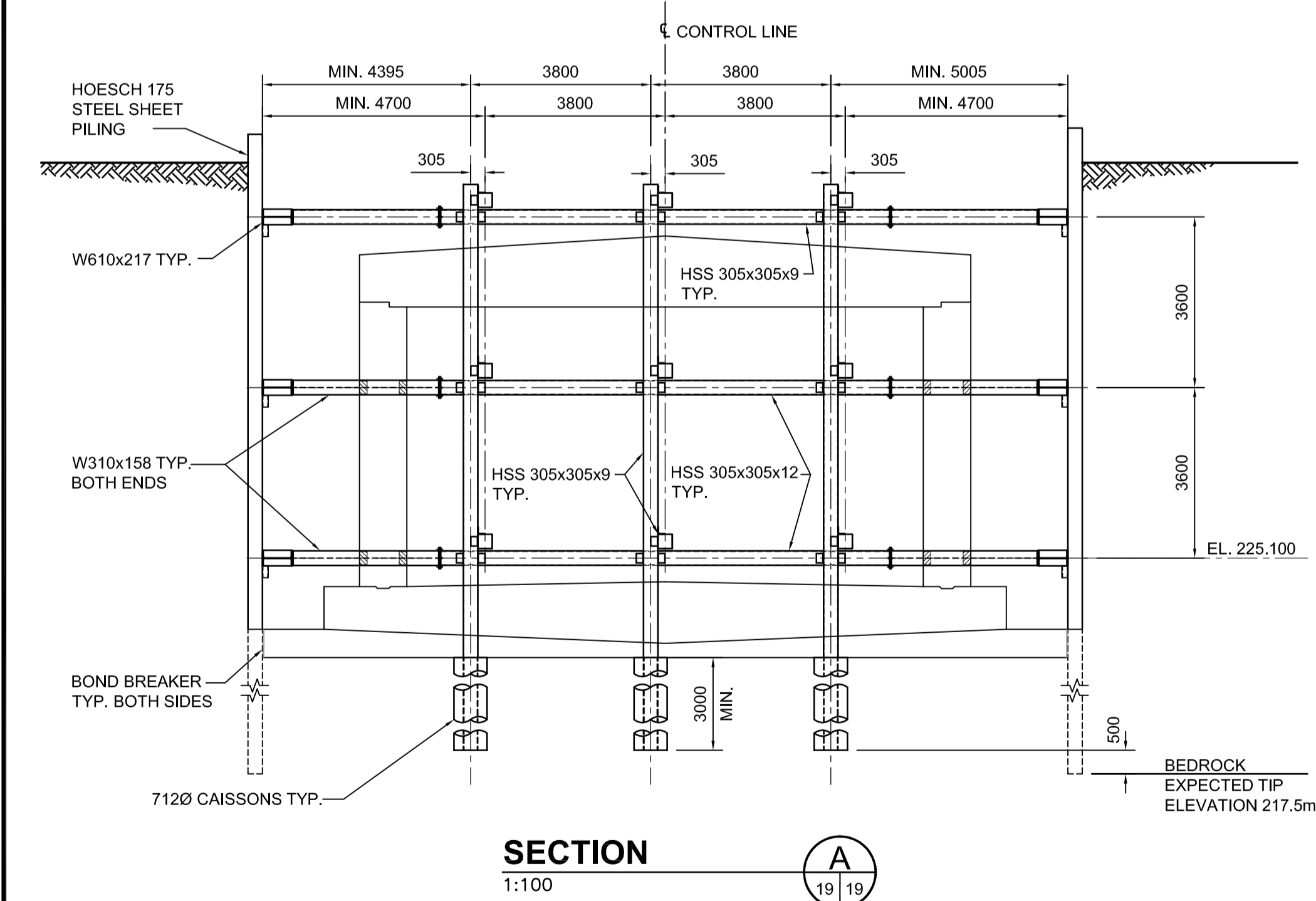
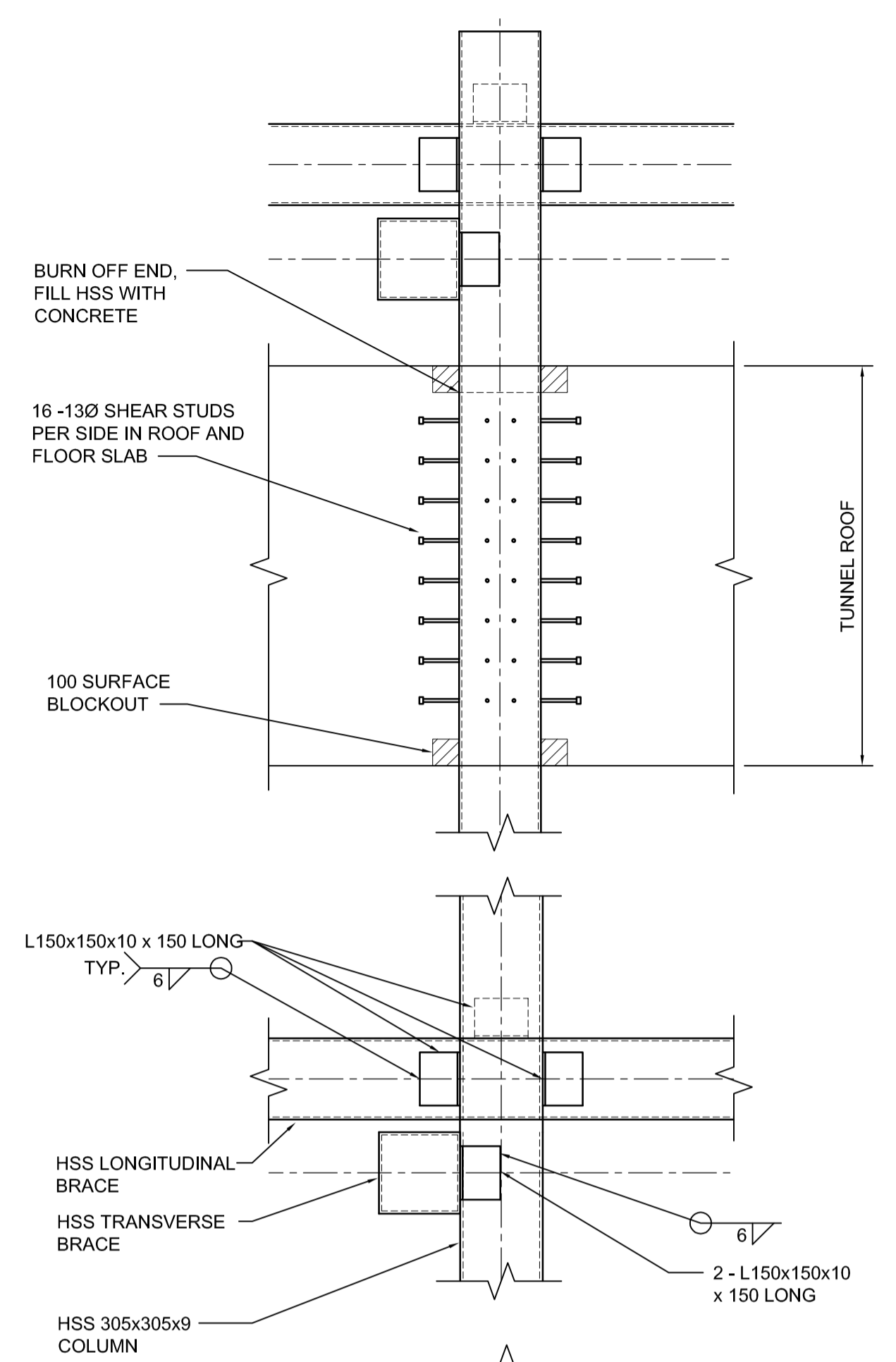
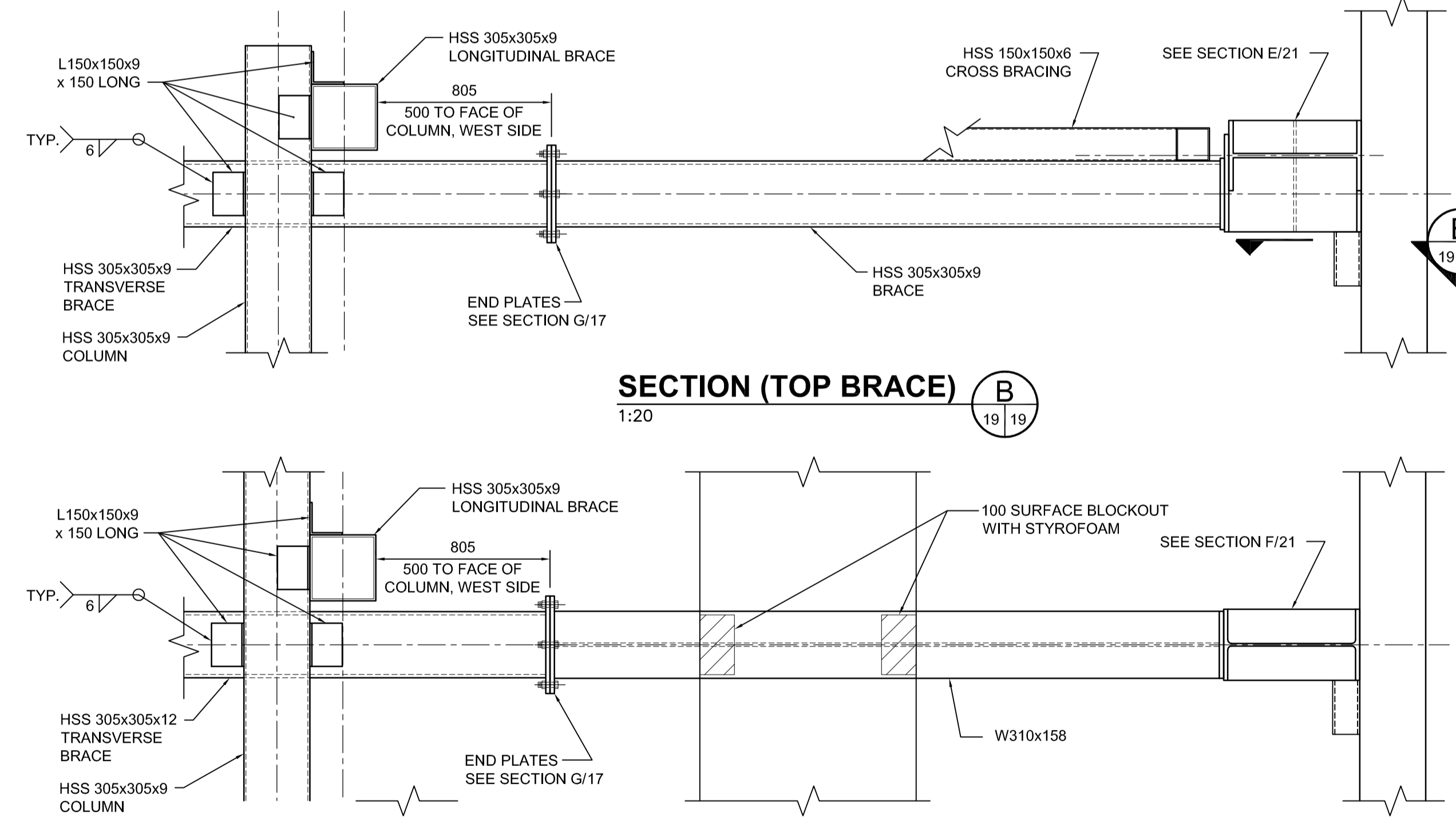


**STAGE 1A BRACED SHORING**  
SCALE 1:100

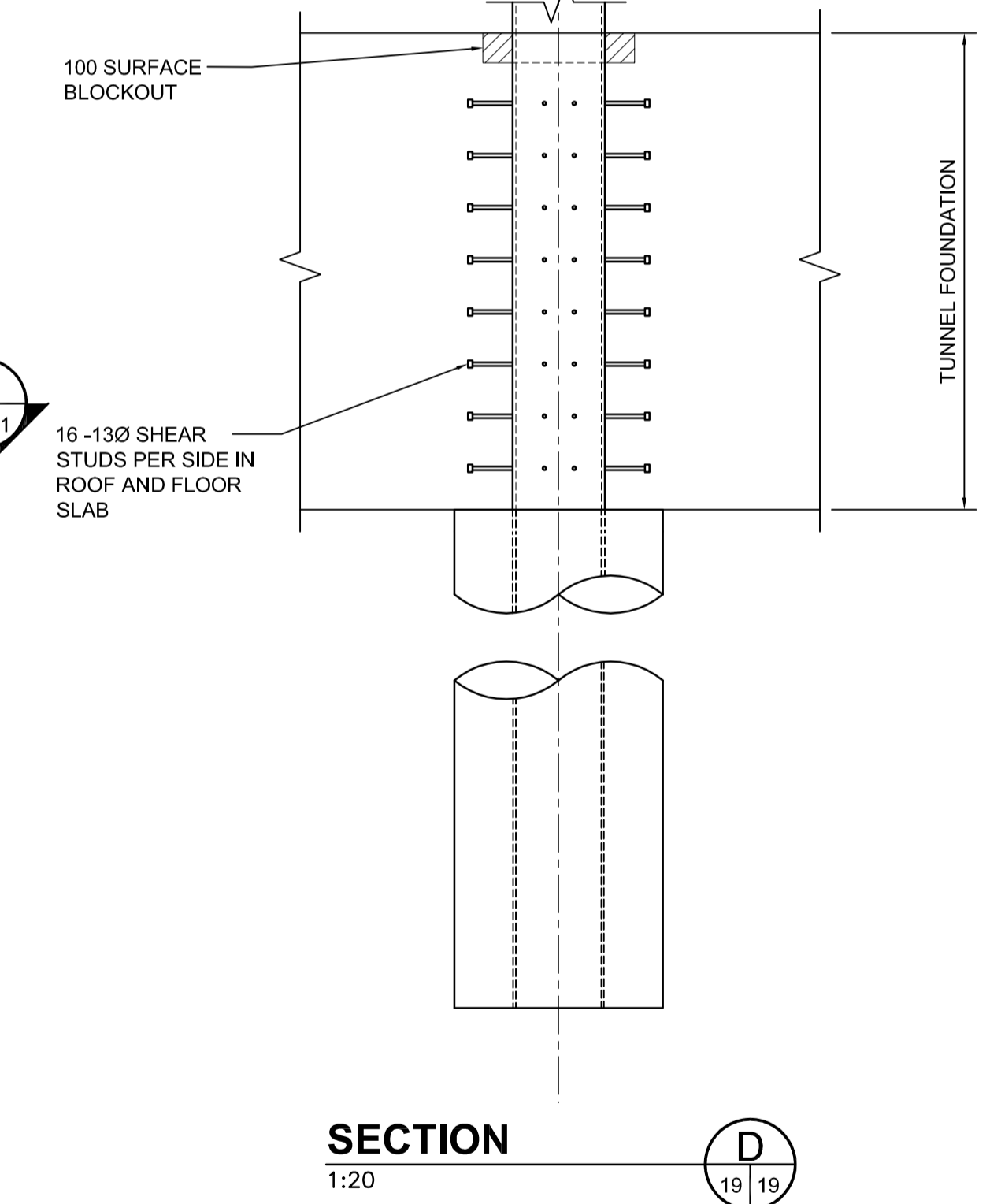


**SECTION A**  
1:100

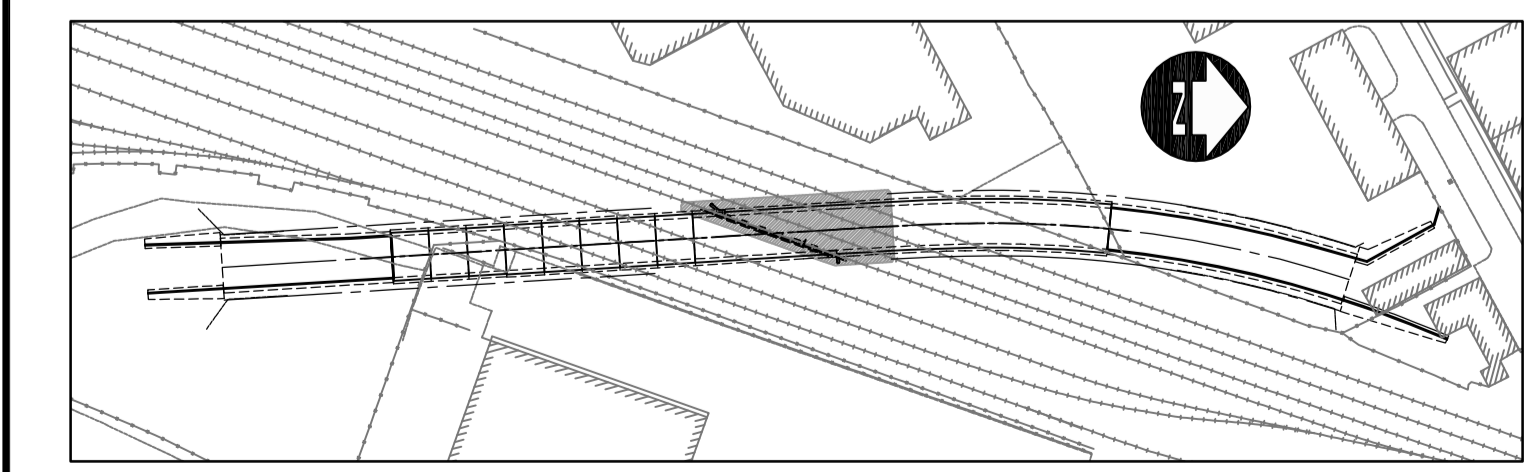


**SECTION (TOP BRACE) B**  
1:20

**SECTION (MID. & BOT. BRACE) C**  
1:20



**SECTION D**  
1:20



**INTERFACE BRACED SHORING KEY PLAN**  
SCALE 1:2000

**AECOM**  
Certificate of Authorization  
AECOM Canada Ltd.  
No. 4671 Date: 2009.10.13

DO NOT SCALE THIS DOCUMENT. ALL MEASUREMENTS MUST BE OBTAINED FROM STATED DIMENSIONS. This drawing has been prepared for the use of AECOM's client and may not be used, reproduced or relied upon by third parties, except as agreed by AECOM and its client, as required by law or for use by governmental reviewing agencies. AECOM accepts no responsibility, and denies any liability whatsoever, to any party that modifies this drawing without AECOM's express written consent.

LOCATION UNDERGROUND	APPROVED STRUCTURES	B.M. ELEV.
SUPV. U/G STRUCTURES COMMITTEE	DATE	
NOTE: LOCATION OF UNDERGROUND STRUCTURES AS SHOWN ARE BASED ON THE BEST INFORMATION AVAILABLE, BUT NO GUARANTEE IS GIVEN THAT ALL EXISTING UTILITIES ARE SHOWN OR THAT THE GIVEN LOCATIONS ARE EXACT. CONFIRMATION OF EXISTENCE AND EXACT LOCATION OF ALL SERVICES MUST BE OBTAINED FROM THE INDIVIDUAL UTILITIES BEFORE PROCEEDING WITH CONSTRUCTION.		

DESIGNED BY	FK
DRAWN BY	KA
CHECKED BY	RE/KC
APPROVED BY	EBL
HOR. SCALE	AS NOTED
VERTICAL	
ISSUED FOR TENDER	10.13.09 KAA
NO. REVISIONS	DATE BY
	2009.10.13

RELEASED FOR CONSTRUCTION	DATE



ENGINEER'S SEAL  
PROVINCE OF MANITOBA  
ORIGINAL SIGNED BY  
**F.A. KEMP**  
2009/10/13  
REGISTERED PROFESSIONAL ENGINEER  
CONSULTANT PROJECT NO.  
088813

**THE CITY OF WINNIPEG**  
TRANSIT DEPARTMENT

**Winnipeg**

SOUTHWEST RAPID TRANSIT CORRIDOR - STAGE 1  
TRANSITWAY TUNNEL AT CN RIVER SUBDIVISION  
MILEAGE 1.38 & ASSOCIATED WORKS

STAGE 1 INTERFACE BRACED SHORING

CITY DRAWING NUMBER: U237-09-19  
SHEET 19 OF 73  
CONSULTANT DRAWING NUMBER: C4-S1007-T