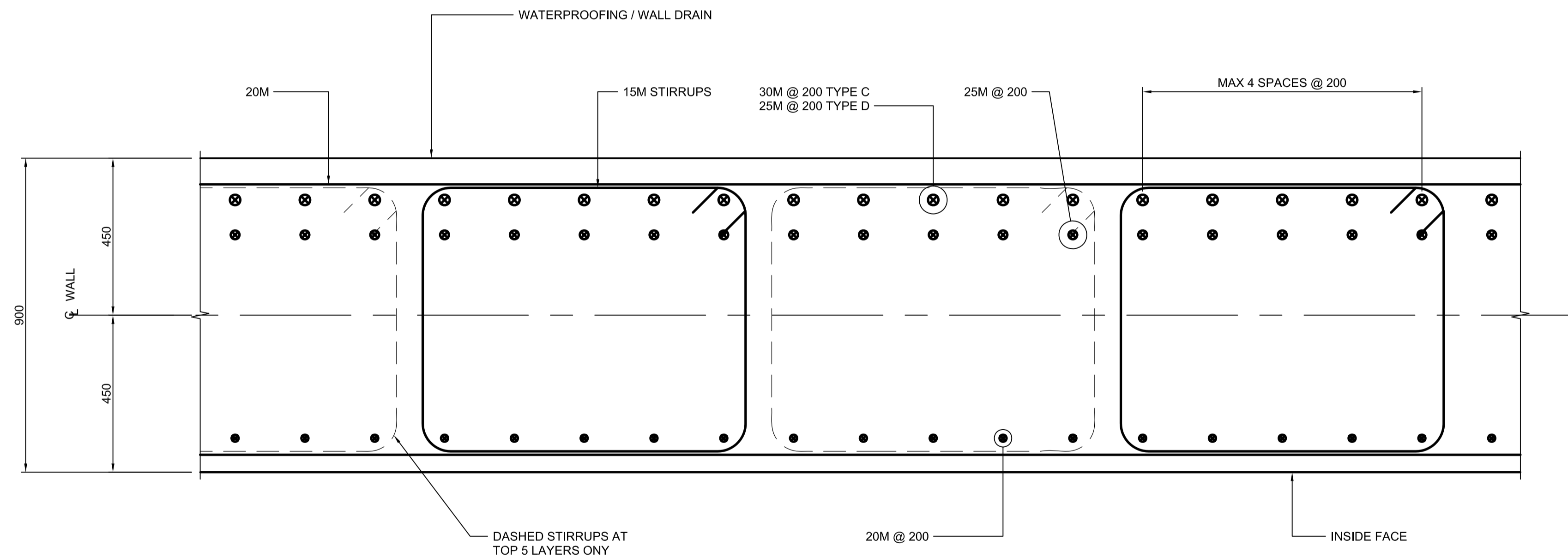


SECTION A  
SCALE 1:10



SECTION B  
SCALE 1:10

NOTES:

- FIVE (5) LAYERS AT TOP OF WALL TO BE CLOSED STIRRUPS AS SHOWN. BELOW THIS, CLOSED STIRRUPS MAY BE REPLACED WITH CONVENTIONAL OPEN STIRRUPS c/w 2-135 DEGREE HOOKS OR BY PAIRS OF U-BARS WITH MINIMUM 550 LAP.



| LOCATION UNDERGROUND   | APPROVED STRUCTURES | B.M. ELEV.     |
|--|---------------------|----------------|
| SUPV. U/G STRUCTURES COMMITTEE   | DATE                |                |
| NOTE:<br>LOCATION OF UNDERGROUND STRUCTURES AS SHOWN ARE BASED ON THE BEST INFORMATION AVAILABLE BUT NO GUARANTEE IS GIVEN THAT ALL EXISTING UTILITIES ARE SHOWN OR THAT THE GIVEN LOCATIONS ARE EXACT. CONFIRMATION OF EXISTENCE AND EXACT LOCATION OF ALL SERVICES MUST BE OBTAINED FROM THE INDIVIDUAL UTILITIES BEFORE PROCEEDING WITH CONSTRUCTION. |                     |                |
| NO.  | REVISIONS           | DATE BY        |
| 0  | ISSUED FOR TENDER   | 10/13/2009 RCB |

| DESIGNED BY     | DRAWN BY | CHECKED BY | APPROVED BY | HOR. SCALE | VERTICAL |
|-----------------|----------|------------|-------------|------------|----------|
| KGW             | RCB      | KGW        | DPK         | AS SHOWN   | AS SHOWN |
| DATE 2009/06/24 |          |            |             |            |          |

**DILLON CONSULTING**

RELEASED FOR CONSTRUCTION

DATE

ENGINEER'S SEAL

PROVINCE OF MANITOBA

ORIGINAL SIGNED BY:  
K. G. WILLIS  
10.13.2009

REGISTERED PROFESSIONAL ENGINEER

CONSULTANT PROJECT NO.  
088813

**THE CITY OF WINNIPEG**  
TRANSIT DEPARTMENT

**Winnipeg**

SOUTHWEST RAPID TRANSIT CORRIDOR - STAGE 1  
TRANSITWAY TUNNEL AT CN RIVERS SUBDIVISION  
MILEAGE 1.38 & ASSOCIATED WORKS

WALL SECTIONS

CITY DRAWING NUMBER  
U237-09-33

SHEET 33 OF 73

CONSULTANT DRAWING NUMBER  
C4-S1110-T