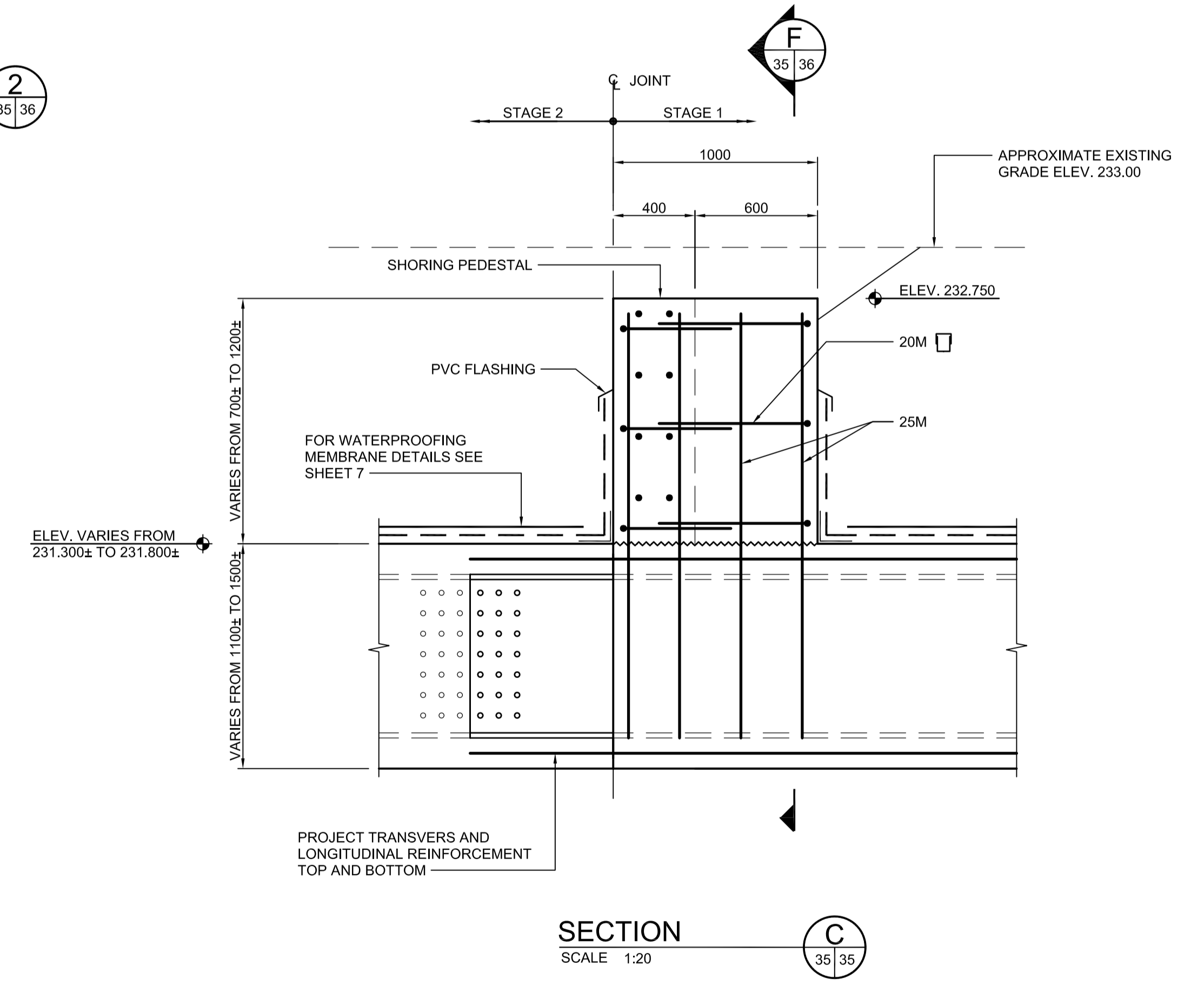
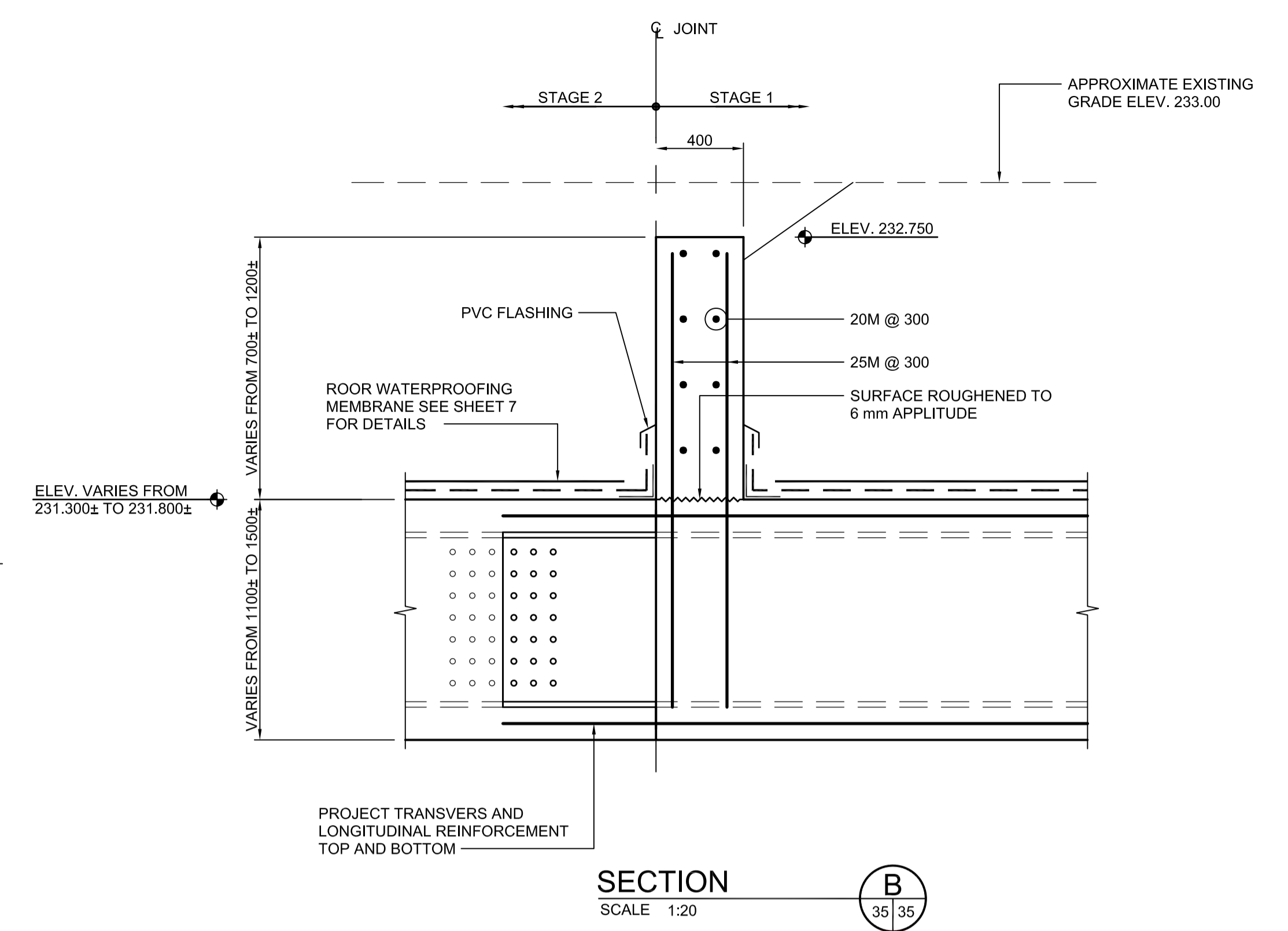
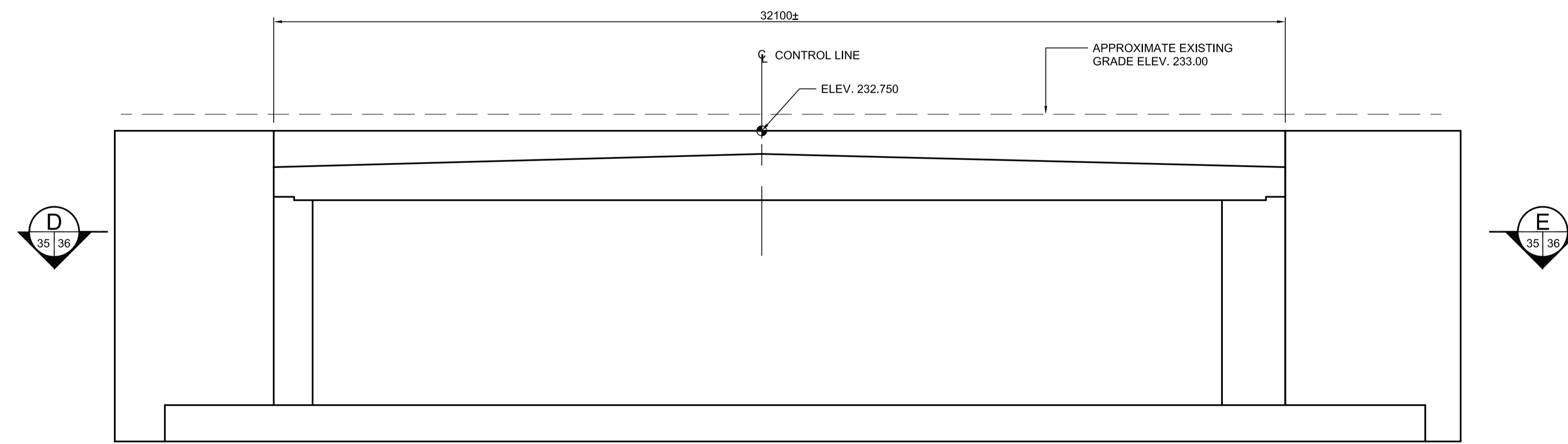


NOTE:

- 6 PEDESTALS REQUIRED, LOCATION TO BE COORDINATED WITH SHORING SPECIFICATIONS.

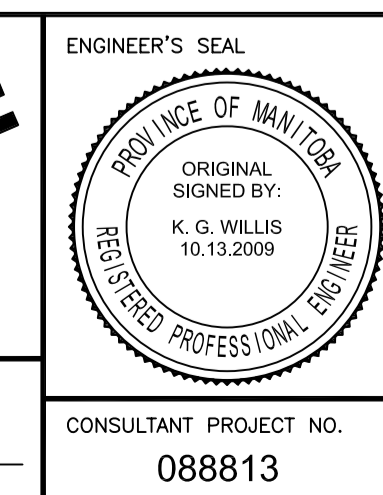
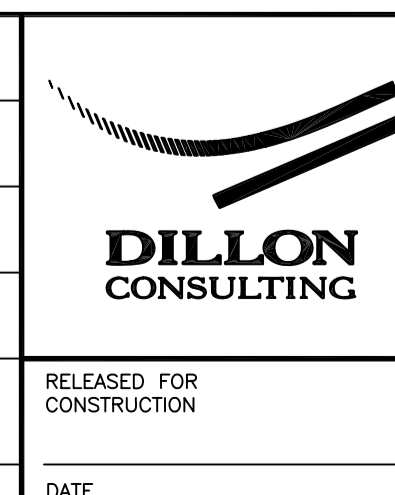


G:\cso\088813\Contract\Contract - 1\Current\C4-S1112-P.dwg



LOCATION UNDERGROUND	APPROVED STRUCTURES	B.M. ELEV.		DESIGNED BY	KGW			
SUPV. U/G STRUCTURES COMMITTEE	DATE			DRAWN BY	RCB			
				CHECKED BY	KGW			
				APPROVED BY	DPK			
				HOR. SCALE	AS SHOWN			
				VERTICAL	AS SHOWN			
NOTE:		0	ISSUED FOR TENDER	10/13/2009	RCB			
LOCATION OF UNDERGROUND STRUCTURES AS SHOWN ARE BASED ON THE BEST INFORMATION AVAILABLE. BUT NO GUARANTEE IS GIVEN THAT ALL EXISTING UTILITIES ARE SHOWN OR THAT THE GIVEN LOCATIONS ARE EXACT. CONFIRMATION OF EXISTENCE AND EXACT LOCATION OF ALL SERVICES MUST BE OBTAINED FROM THE INDIVIDUAL UTILITIES BEFORE PROCEEDING WITH CONSTRUCTION.				NO. REVISIONS	DATE	BY	DATE	2009/06/24

DESIGNED BY	KGW
DRAWN BY	RCB
CHECKED BY	KGW
APPROVED BY	DPK
HOR. SCALE	AS SHOWN
VERTICAL	AS SHOWN
RELEASED FOR CONSTRUCTION	DATE



THE CITY OF WINNIPEG
TRANSIT DEPARTMENT

Winnipeg

SOUTHWEST RAPID TRANSIT CORRIDOR - STAGE 1
TRANSITWAY TUNNEL AT CN RIVERS SUBDIVISION
MILEAGE 1.38 & ASSOCIATED WORKS

CITY DRAWING NUMBER	U237-09-35
SHEET	35 OF 73
CONSULTANT DRAWING NUMBER	C4-S1112-T

HEADWALL DETAILS SHEET 1 OF 2