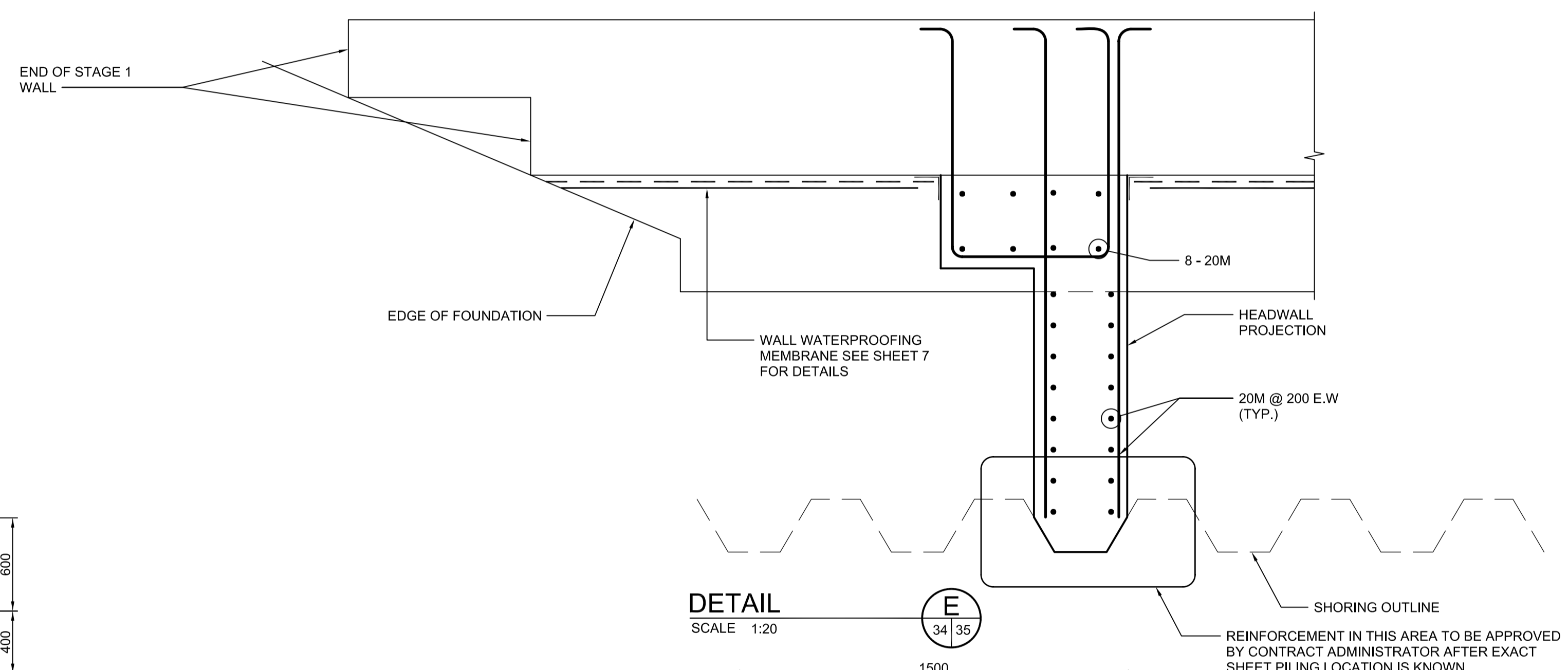
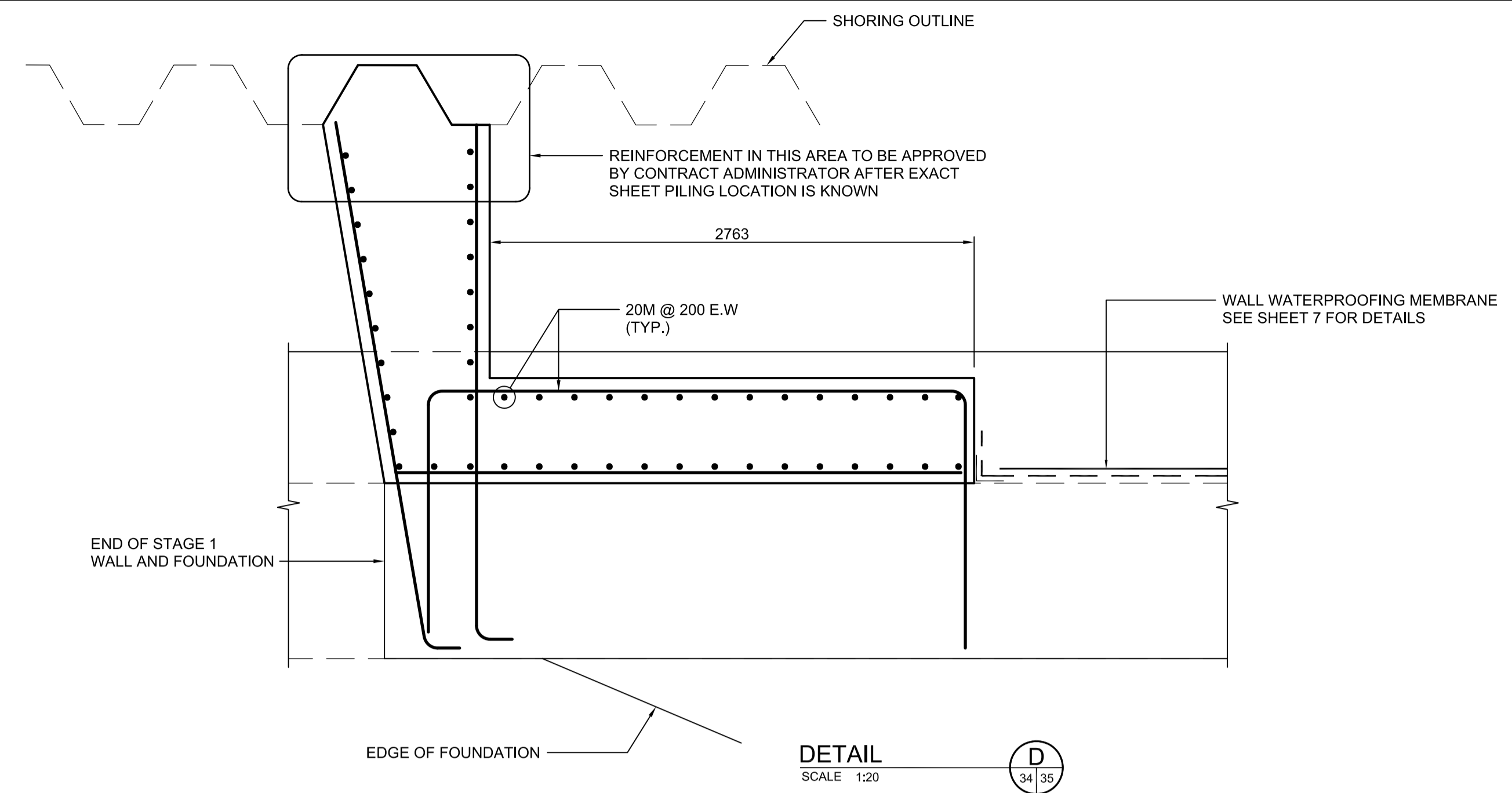
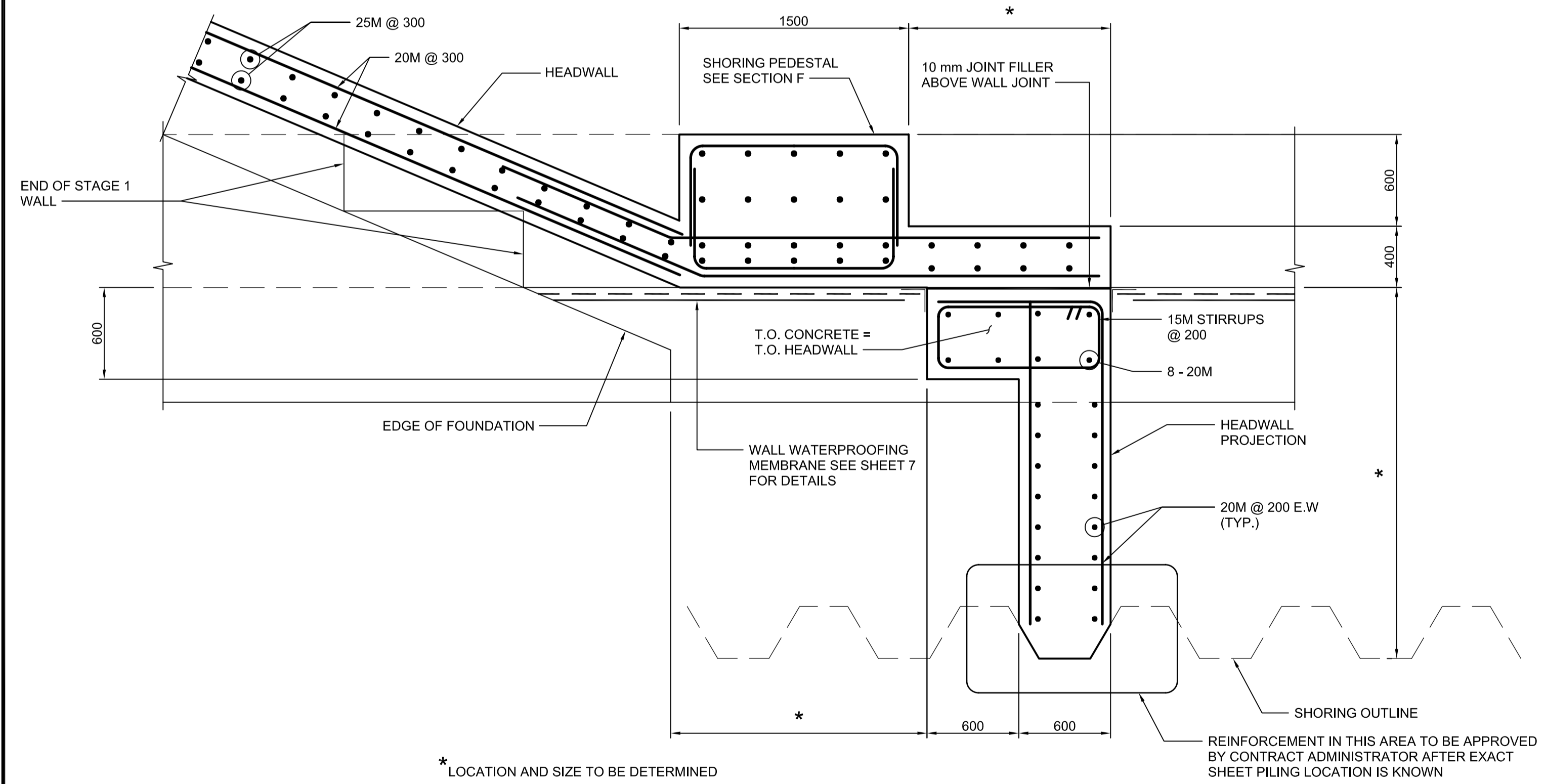


\* LOCATION AND SIZE TO BE DETERMINED IN THE FIELD

DETAIL SCALE 1:20 1 34 35

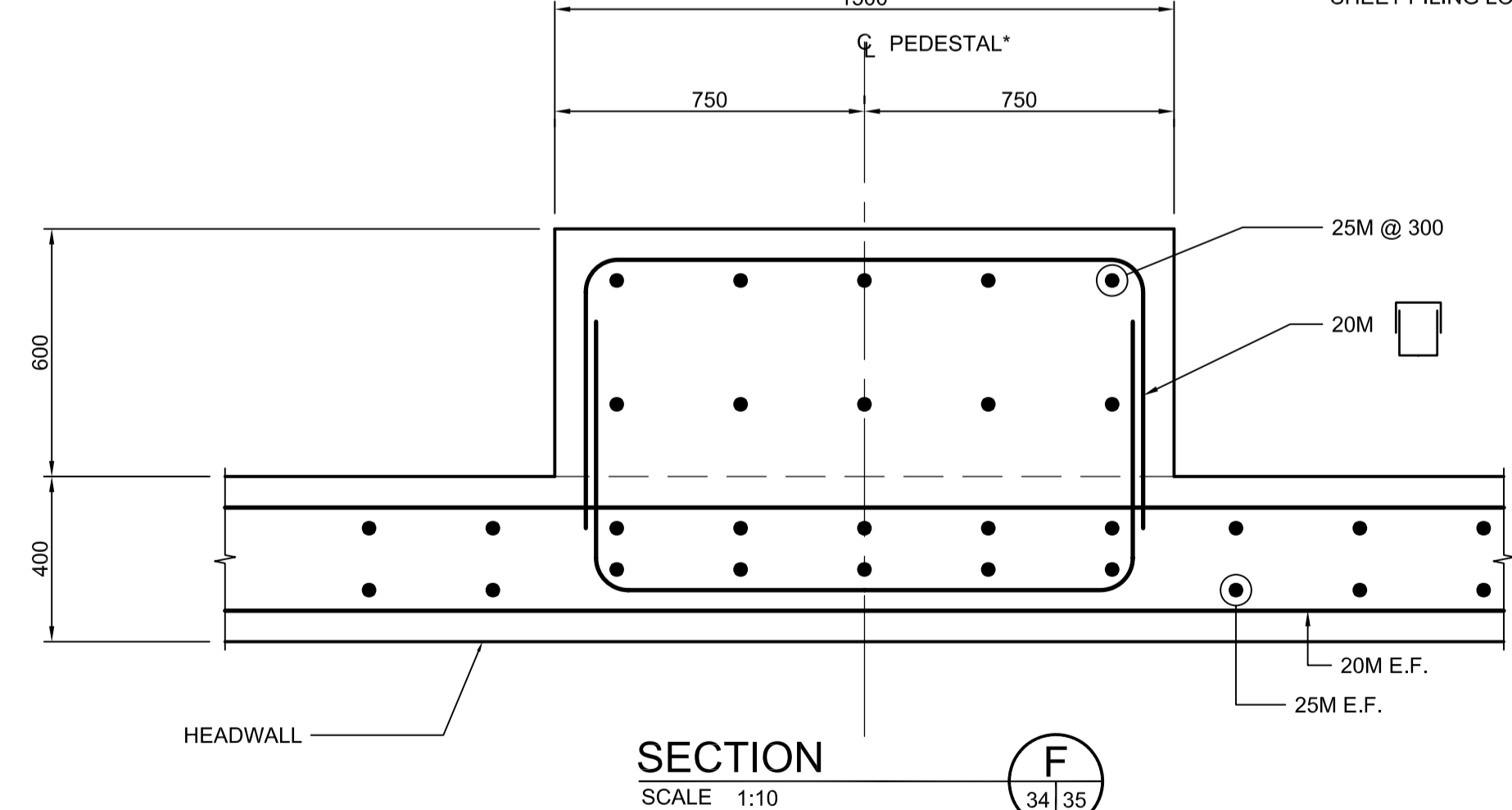


DETAIL SCALE 1:20 E 34 35



\* LOCATION AND SIZE TO BE DETERMINED IN THE FIELD

DETAIL SCALE 1:20 2 34 35



SECTION SCALE 1:10 F 34 35

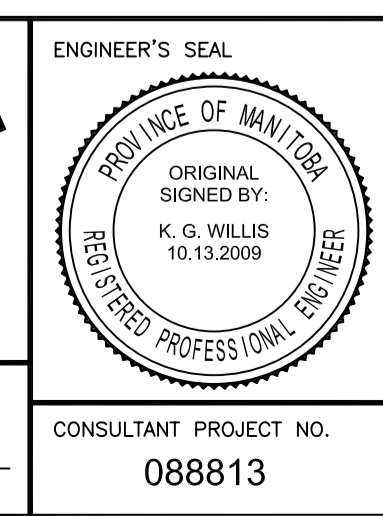
\* 6 SHORING PEDESTALS REQUIRED, LOCATION TO BE COORDINATED WITH SHORING SPECIFICATIONS.

G:\csc\088813\Contract\Contract\_1\Current\C4-S1113-P.dwg



LOCATION UNDERGROUND	APPROVED STRUCTURES	B.M. ELEV.
SUPV. U/G STRUCTURES COMMITTEE	DATE	
NOTE: LOCATION OF UNDERGROUND STRUCTURES AS SHOWN ARE BASED ON THE BEST INFORMATION AVAILABLE BUT NO GUARANTEE IS GIVEN THAT ALL EXISTING UTILITIES ARE SHOWN OR THAT THE GIVEN LOCATIONS ARE EXACT. CONFIRMATION OF EXISTENCE AND EXACT LOCATION OF ALL SERVICES MUST BE OBTAINED FROM THE INDIVIDUAL UTILITIES BEFORE PROCEEDING WITH CONSTRUCTION.		
0	ISSUED FOR TENDER	10/13/2009 RCB
NO.	REVISIONS	DATE BY

DESIGNED BY	KGW
DRAWN BY	RCB
CHECKED BY	KGW
APPROVED BY	DPK
HOR. SCALE	AS SHOWN
VERTICAL	AS SHOWN
DATE	2009/06/24



**THE CITY OF WINNIPEG**  
TRANSIT DEPARTMENT

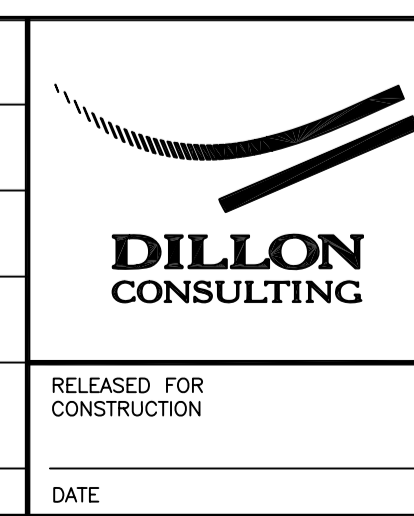
**Winnipeg**

SOUTHWEST RAPID TRANSIT CORRIDOR - STAGE 1  
TRANSITWAY TUNNEL AT CN RIVERS SUBDIVISION  
MILEAGE 1.38 & ASSOCIATED WORKS

CITY DRAWING NUMBER: U237-09-36  
SHEET 36 OF 73  
CONSULTANT DRAWING NUMBER: C4-S1113-T

CONSULTANT PROJECT NO. 088813

HEADWALL DETAILS SHEET 2 OF 2



RELEASED FOR CONSTRUCTION