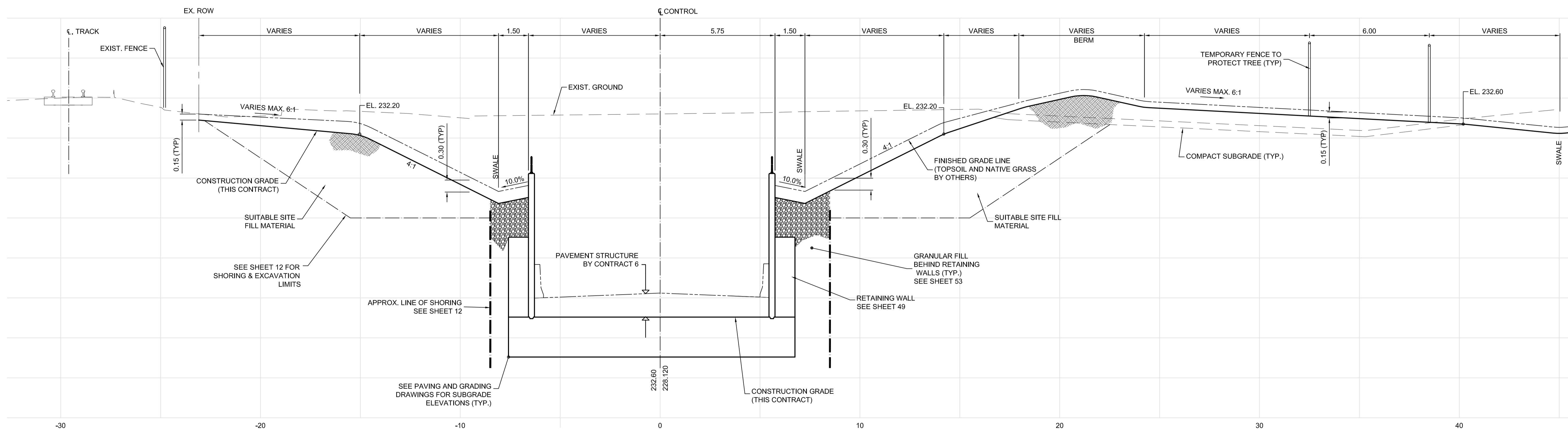


**C** SECTION - STA. 11+720  
 SCALE: H = 1:100 V = 1:50



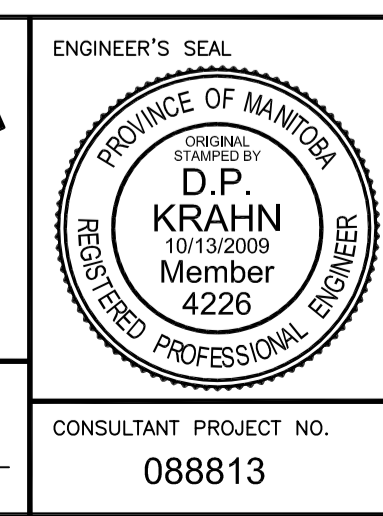
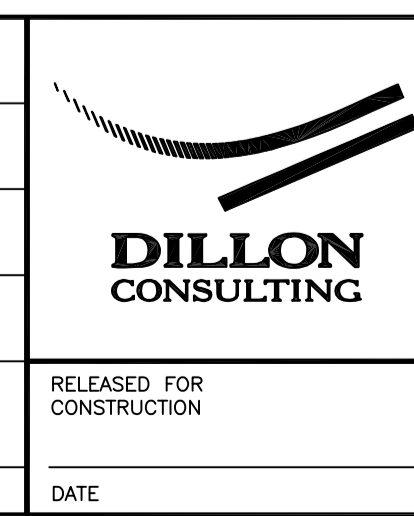
**D** SECTION - STA. 11+740  
 SCALE: H = 1:100 V = 1:50

METRIC  
 WHOLE NUMBERS INDICATE MILLIMETRES  
 DECIMALIZED NUMBERS INDICATE METRES.



LOCATION UNDERGROUND	APPROVED STRUCTURES	B.M. ELEV.
SUPV. U/G STRUCTURES COMMITTEE	DATE	
NOTE: LOCATION OF UNDERGROUND STRUCTURES AS SHOWN ARE BASED ON THE BEST INFORMATION AVAILABLE, BUT NO GUARANTEE IS GIVEN THAT ALL EXISTING UTILITIES ARE SHOWN OR THAT THE GIVEN LOCATIONS ARE EXACT. CONFIRMATION OF EXISTENCE AND EXACT LOCATION OF ALL SERVICES MUST BE OBTAINED FROM THE INDIVIDUAL UTILITIES BEFORE PROCEEDING WITH CONSTRUCTION.		
0	ISSUED FOR TENDER	10.13.2009 TJH
NO.	REVISIONS	DATE BY

DESIGNED BY	RTP
DRAWN BY	TJH/RTP
CHECKED BY	DPK
APPROVED BY	DPK
HOR. SCALE	1:100
VERTICAL	1:50
DATE	10/13/2009



**THE CITY OF WINNIPEG**  
 TRANSIT DEPARTMENT

Winnipeg

SOUTHWEST RAPID TRANSIT CORRIDOR - STAGE 1  
 TRANSITWAY TUNNEL AT CN RIVERS SUBDIVISION  
 MILEAGE 1.38 & ASSOCIATED WORKS

CITY DRAWING NUMBER: U237-09-69  
 SHEET 69 OF 73  
 CONSULTANT DRAWING NUMBER: C4-C3007-T

CONSULTANT PROJECT NO. 088813

CROSS SECTIONS - STA. 11+720 & 11+740

G:\CAD\088813\Contract\Contract\_4-Underpass\Current\C4-C3006-Cross Sections.dwg