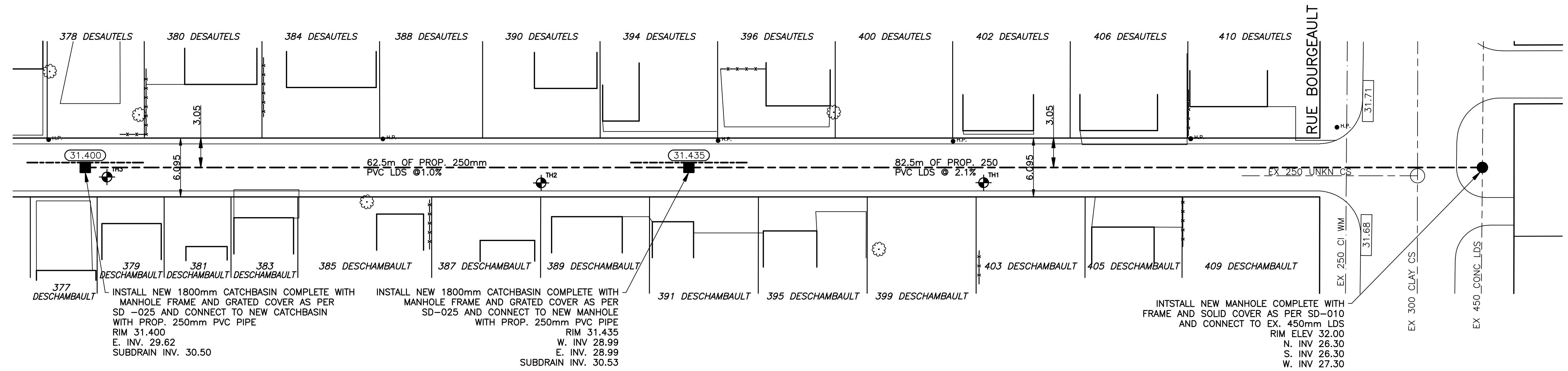
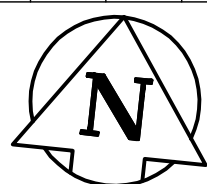


CHAINAGE ALONG CENTER OF ROW

DESAUTELS / DESCHAMBAULT ALLEY LDS



INSTALL NEW 1800mm CATCHBASIN COMPLETE WITH MANHOLE FRAME AND GRATED COVER AS PER SD -025 AND CONNECT TO NEW CATCHBASIN WITH PROP. 250mm PVC PIPE
RIM 31.400
E. INV. 29.62
SUBDRAIN INV. 30.50

INSTALL NEW 1800mm CATCHBASIN COMPLETE WITH MANHOLE FRAME AND GRATED COVER AS PER SD-025 AND CONNECT TO NEW MANHOLE WITH PROP. 250mm PVC PIPE
RIM 31.435
W. INV. 28.99
E. INV. 28.99
SUBDRAIN INV. 30.53

INSTALL NEW MANHOLE COMPLETE WITH FRAME AND SOLID COVER AS PER SD-010 AND CONNECT TO EX. 450mm LDS
RIM ELEV 32.00
N. INV 26.30
S. INV 26.30
W. INV 27.30

BENCHMARK:
S.E. COR. OF RUE DES MEURONS & HAMEL AVE., TBLT. IN W. CONC. WALL OF INTERNATIONAL LABORATORIES NO. 49 RUE DES MEURONS, 0.5 M S. & 1.0 M BELOW BRICK OF N. W. CORN. OF BLDG.

METRIC
WHOLE NUMBERS INDICATE MILLIMETRES
DECIMALIZED NUMBERS INDICATE METRES

INSTALL PVC SUBDRAIN BETWEEN STA. 1+64 AND 1+76
STA. 2+26.50 AND 2+38.50



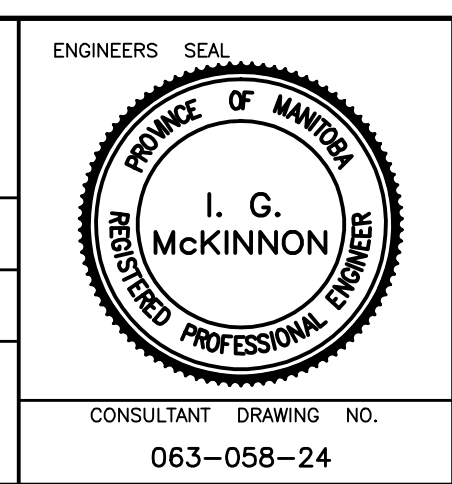
—	WATERMAIN	—	HYDRO	—	CENTER LINE	—	LOCATION APPROVED
—	HYDRANT	—	M.T.S.	—	NORTH GUTTER LINE	—	B.M. ELEV.
—	VALVE	—	CONCRETE	—	SOUTH GUTTER LINE	—	QMBM: 34-011 231.413
—	LAND DRAINAGE SEWER	—	ASPHALT	—	WATERMAIN	—	DESIGNED BY R.H.
—	WASTE WATER SEWER	—	PROPERTY LINE	—	VALVE	—	CHECKED BY S.M.
—	MANHOLE	—	SURVEY BAR	—	LAND DRAINAGE SEWER	—	APPROVED BY I.McK
—	CATCH BASIN	—	C.B. STOP	—	WASTE WATER SEWER	—	RELEASED FOR CONSTRUCTION
—	CURB INLET	—	C.B. LEAD	—	JUNCTIONS	—	ORIGINALLY SIGNED BY
—	TRAFFIC SIGNAL	—	SIDEWALK	—	TESTHOLE	—	DATE
—	STEAM HT.	—	SIDEWALK RAMP	—	ASPH./CONC. PAD	—	CONSULTANT DRAWING NO. 063-058-24
—	GAS	—	ELEVATIONS	—	GARAGE PAD	—	2009 ALLEY RENEWALS AND LOCAL IMPROVEMENTS DESAUTELS / DESCHAMBAULT ALLEY LAND DRAINAGE SEWER
—	EXISTING	—	LEGEND - PLAN	—	PROPOSED	—	FROM CATCHBASIN AT STATION 1+70 TO MANHOLE ON 450mm CONCRETE LDS

NO.	REVISIONS	DATE	BY

GENIVAR
10 PRAIRIE WAY, WINNIPEG, MANITOBA R2J 5J8
PH: (204)-477-6880 FAX: (204)-477-2864

DESIGNED BY R.H.
DRAWN BY R.H.
HOR. SCALE: 1:250
VERT. SCALE: 1:50

DATE: JUNE 2009



THE CITY OF WINNIPEG
WATER AND WASTE DEPARTMENT

2009 ALLEY RENEWALS AND LOCAL IMPROVEMENTS
DESAUTELS / DESCHAMBAULT ALLEY
LAND DRAINAGE SEWER

CITY DRAWING NO. SHEET 1 OF 1
594-2009