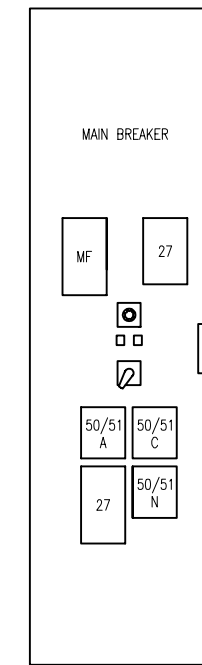


4160V SWITCHGEAR



EXISTING
4160V MAIN BREAKER
ELEVATION

WORK REQUIRED

- 1. INSTALL NEW RELAYS IN THE LOCATIONS SHOWN.

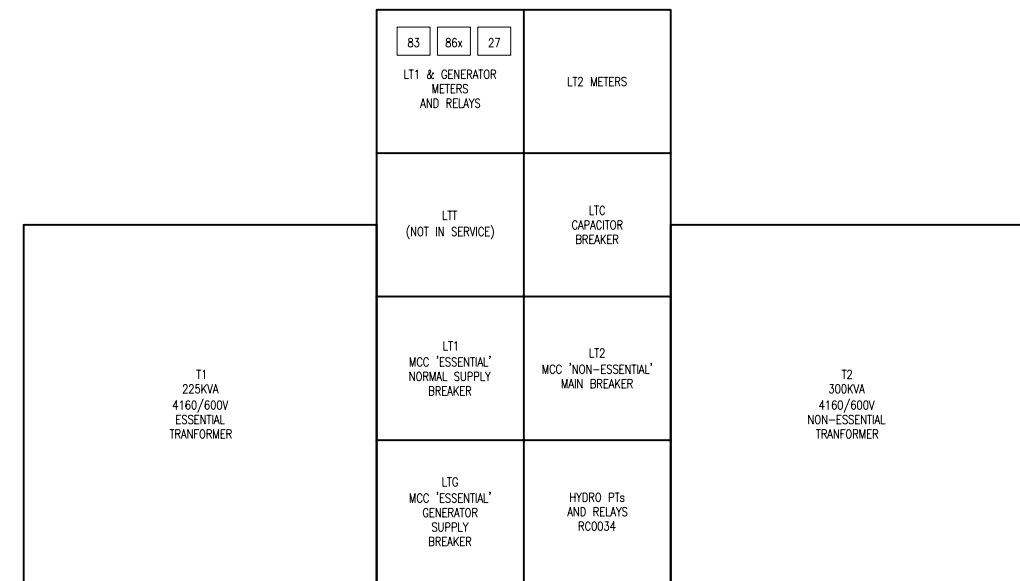
P7 SUMP PUMP	F3 EXHAUST FAN	LD-050 FE-1 NORTH FLOWMETER	LD-050 FE-2 SOUTH FLOWMETER	FC2 FAN COIL	LZ-902-AC VALVE AIR COMPRESSOR	SHV-2
P8 SUMP PUMP	F4 EXHAUST FAN			HV4 SCR'S	SPARE 50A BREAKER SIZE 1	H1 MONORAIL HOIST CL2 ROOM D1 - PUMP ROOM DOOR
R1 AIR COMPRESSOR	E7 12 KW HEATING	SHV-1	SHV-3			E4 10KW HEAT D2 - PUMP ROOM DOOR
R2 AIR COMPRESSOR	F6 EXHAUST FAN	DHV-1	DHV-4	E1 75 KW HEATING	E3 60 KW HEATING	E5 12KW HEAT LPA TRANSFORMER
FC1 FAN COIL	F9 EXHAUST FAN					E6 12 KW HEAT SPARE WELDING RECEPTACLE
FC3 FAN COIL	F10 EXHAUST FAN	LP-B TRANSFORMER	UPS-1 TRANSFORMER			E8 10KW HEAT E9 10KW HEAT
F1 EXHAUST FAN	F12 EXHAUST FAN			E2 60 KW HEATING	E10 40 KW HEATING	E11 20KW HEAT E12 20KW HEAT
F2 EXHAUST FAN						E13 7.5 KW HEAT E14 20KW HEAT AIR CONDITIONER
						VALVE HOUSE MCC FEEDER

MCC 'ESSENTIAL'

MCC 'NON-ESSENTIAL'

CH 1	
CHWP1	AHU1
CHWP2	CT-1 FAN2
CTP1	CT-1 FAN2
CTP2	

CDP-B 'NON-ESSENTIAL'



600V SWITCHGEAR

NOTES:

- 1. THIS DRAWING IS BASED UPON EXISTING DOCUMENTATION AND SITE INSPECTION. DESIGN RESPONSIBILITY IS LIMITED TO THE MODIFICATIONS SHOWN.



DESIGNED BY:	B. KING	CHECKED BY:	C. REIMER
DRAWN BY:	B. KING	APPROVED BY:	C. REIMER
SCALE:	NTS	RELEASED FOR CONSTRUCTION BY:	
DATE:	2009/08/17	DATE:	
ISSUED FOR TENDER	2009/08/17	BDK	CJR
NO. REVISIONS	DATE	DESIGN	CHECK

SNC-LAVALIN INC.
148 Hutterly Park Way
Winnipeg, MB, Canada R3P 0X7
204-786-8080

ENGINEER'S SEAL
ORIGINAL DRAWING
SEALED BY:
B. D., KING
2009/08/14
REV. 00

THE CITY OF WINNIPEG
WATER AND WASTE DEPARTMENT

MACLEAN PUMPING STATION
ELECTRICAL EQUIPMENT ELEVATIONS
4160V SWITCHGEAR & 600V SWITCHGEAR/MCC

CITY DRAWING NUMBER: 1-0630M-E0013
SHEET: 001
REV: 00
SIZE: A1

1-0630M-E0012	ELECTRICAL EQUIPMENT PLAN
DRAWING NUMBER	REFERENCE DRAWINGS