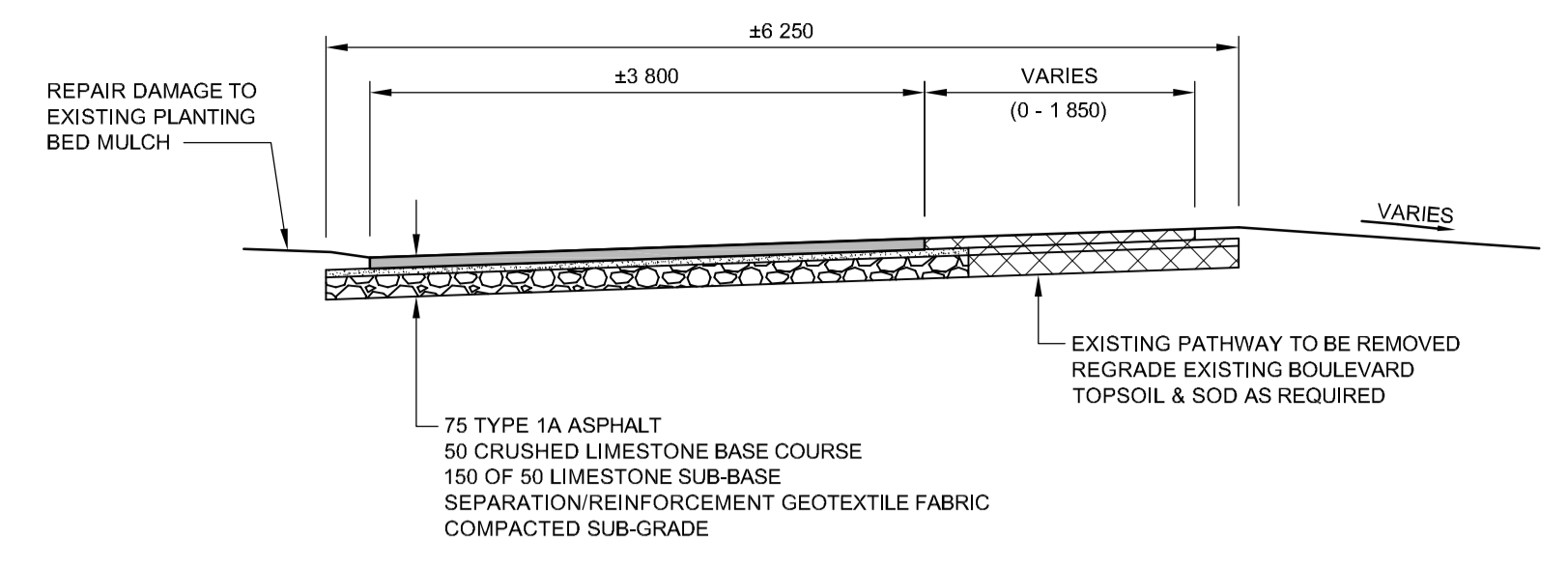
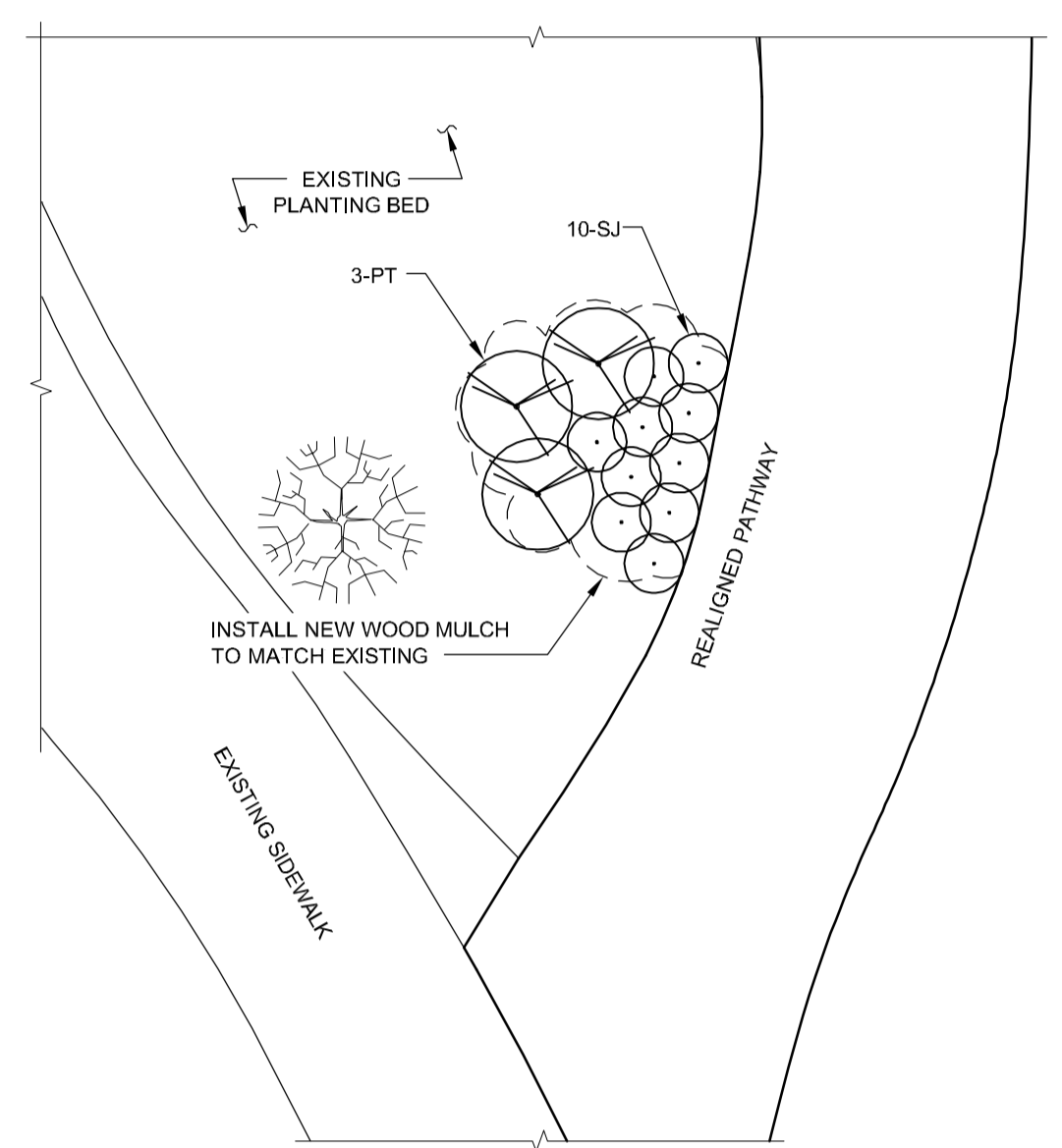


NOTE: PROFILE TAKEN ALONG CL OF 900 DIA. LDS

NOTE: ALL ELEVATIONS ARE ± UNTIL CONFIRMED ON SITE



TYPICAL PATH SECTION
1:50

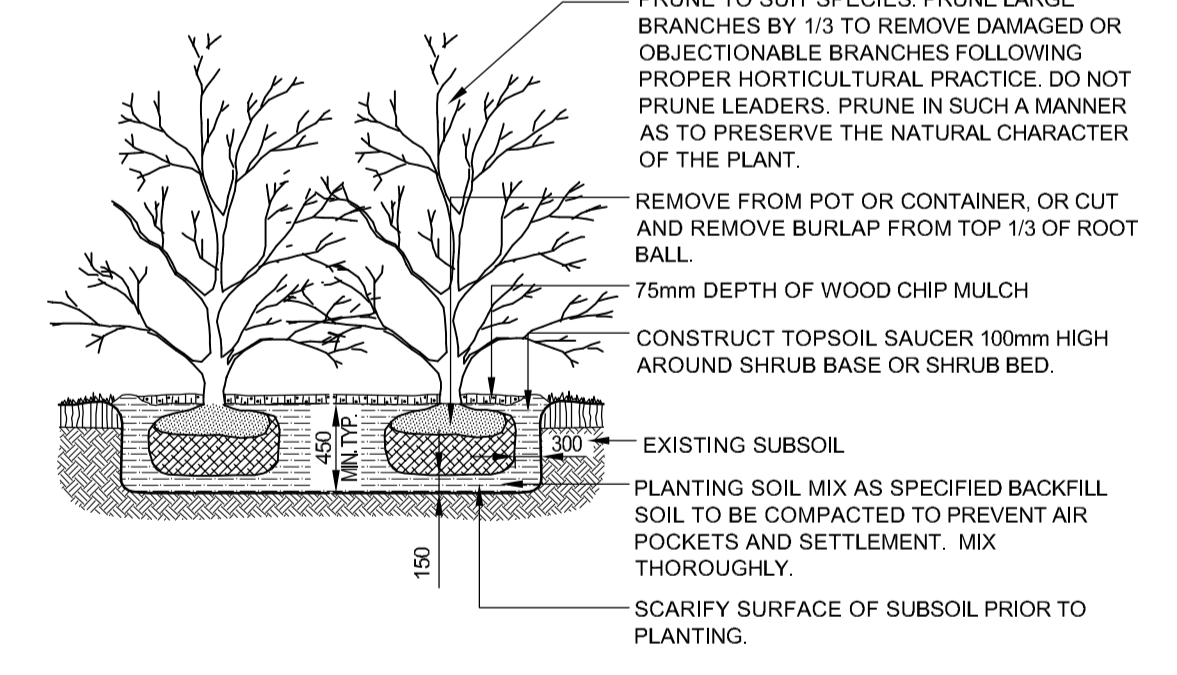


LANDSCAPING DETAIL
1:100

KEY	QTY	BOTANICAL NAME	COMMON NAME	SIZE
SHRUBS				
PT	3	Prunus tenella	Flowering Almond	600-700 mm Ht.
SJ	10	Spirea japonica 'Golden Princess'	Golden Princess Spirea	300-450 mm Ht.

LANDSCAPE NOTES:

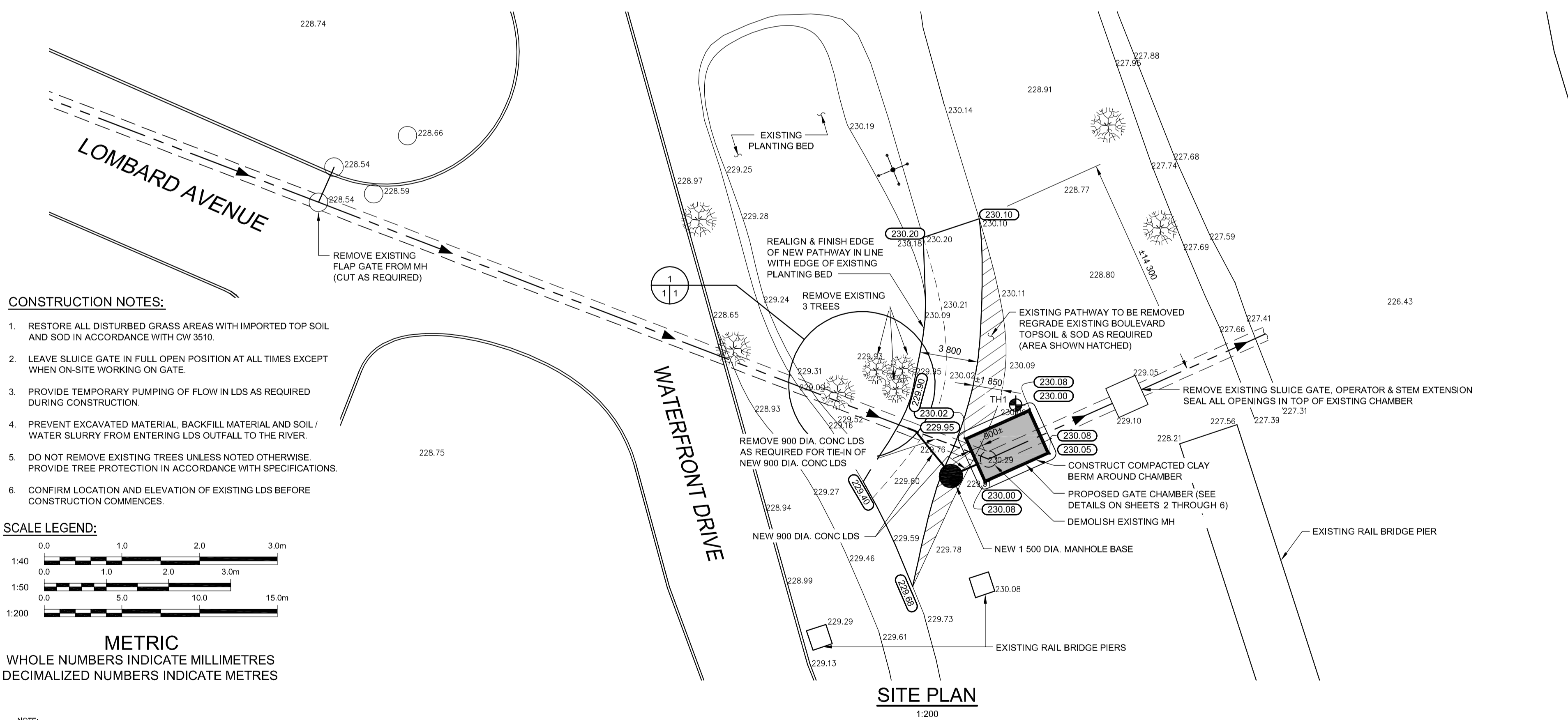
- SUPPLY AND PLACE CLEAN FILL AS INDICATED IN THE PLANTING DETAIL (APPROX. AREA 11 sq.m.)
- SUPPLY AND PLACE WOOD MULCH TO MATCH EXISTING SHALL BE PLACED AROUND NEW SHRUBS (APPROX. AREA 11 sq.m.)
- CONTRACTOR SHALL MAINTAIN AND WARRANTY ALL LANDSCAPING FOR A MINIMUM PERIOD OF 2 (TWO) YEARS FROM THE DATE OF CONSTRUCTION COMPLETION.



SHRUB PLANTING
NTS

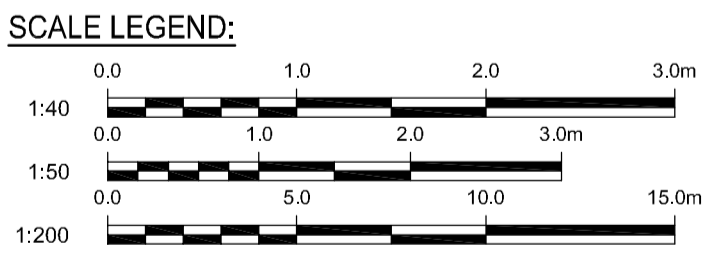
PLANTING NOTES:

- APPLY ANTI-DESSICANT PRIOR TO DELIVERY.
- PLANT TREE NO HIGHER THAN 50mm ABOVE ORIGINAL GROUND GRADE TO ALLOW FOR SETTLEMENT.
- WATER AT TIME OF PLANTING AND WHENEVER DEEMED NECESSARY TO MAINTAIN TREES IN A HEALTHY CONDITION.
- ALL TAGS AND LABELS TO REMAIN UNTIL INSPECTION IS COMPLETED.
- CONTRACTOR TO REMOVE ALL TAGS, LABELS AND STAKES AT THE END OF ONE YEAR.



CONSTRUCTION NOTES:

- RESTORE ALL DISTURBED GRASS AREAS WITH IMPORTED TOP SOIL AND SOD IN ACCORDANCE WITH CW 3510.
- LEAVE SLUICE GATE IN FULL OPEN POSITION AT ALL TIMES EXCEPT WHEN ON-SITE WORKING ON GATE.
- PROVIDE TEMPORARY PUMPING OF FLOW IN LDS AS REQUIRED DURING CONSTRUCTION.
- PREVENT EXCAVATED MATERIAL, BACKFILL MATERIAL AND SOIL / WATER SLURRY FROM ENTERING LDS OUTFALL TO THE RIVER.
- DO NOT REMOVE EXISTING TREES UNLESS NOTED OTHERWISE. PROVIDE TREE PROTECTION IN ACCORDANCE WITH SPECIFICATIONS.
- CONFIRM LOCATION AND ELEVATION OF EXISTING LDS BEFORE CONSTRUCTION COMMENCES.



METRIC
WHOLE NUMBERS INDICATE MILLIMETRES
DECIMALIZED NUMBERS INDICATE METRES

NOTE:
These design documents are prepared solely for the use by the party with whom the design professional has entered into a contract and there are no representations of any kind made by the design professional to any party with whom the design professional has not entered into a contract.



EXISTING	LEGEND-PLAN	PROPOSED	EXISTING	LEGEND-PLAN	PROPOSED	EXISTING	LEGEND-PROFILE	PROPOSED
---	WATERMAIN	---	---	UTILITIES ADJUSTED	⊙ ⊙ ⊙ Δ	---	BARRIER CURB	---
⊕	HYDRANT	---	---	GAS	---	---	ELEVATION	---
⊗	VALVE	---	---	M.T.S.	---	---	SIDEWALK	---
---	LAND DRAINAGE SEWER	---	---	---	---	---	---	---
---	WASTE WATER SEWER	---	---	---	---	---	---	---
○	MANHOLE	●	---	---	---	---	---	---
●	CATCH BASIN	---	---	---	---	---	---	---
---	---	---	---	---	---	---	---	---
---	---	---	---	---	---	---	---	---

LOCATIONS APPROVED	
UNDERGROUND STRUCTURES	SIGNED BY:
SUPV U/G STRUCTURES	DATE
LOCATION OF UNDERGROUND STRUCTURES AS SHOWN ARE BASED ON THE BEST INFORMATION AVAILABLE BUT NO GUARANTEE IS GIVEN THAT ALL EXISTING UTILITIES ARE SHOWN OR THAT THE GIVEN LOCATIONS ARE EXACT CONFIRMATION OF EXISTANCE AND EXACT LOCATION OF ALL SERVICES MUST BE OBTAINED FROM THE INDIVIDUAL UTILITIES BEFORE PROCEEDING	

DESIGNED BY		CHECKED BY	
GK	GK	GK	GK
DRAWN BY		APPROVED BY	
CDP	JPL		
HOR. SCALE		RELEASED FOR CONSTRUCTION	
1:200 U.N.O.			
VERT. SCALE		ORIGINAL SIGNED BY	
1:40 U.N.O.		K. ZUREK, P. ENG.	
0	ISSUED FOR TENDER		
No.	REVISIONS	DATE	BY
		09.09.18	



THE CITY OF WINNIPEG
WASTE AND WATER DEPARTMENT

Winnipeg

OUTFALL GATE CHAMBER CONSTRUCTION
LOMBARD AVE. & WATERFRONT DR.
LDS OUTFALL GATE CHAMBER

SITE PLAN

CONSULTANT DRAWING No.: 5509090-S1
SHEET 1 OF 6
CITY DRAWING No.: LD-5438

BID OPPORTUNITY: 632-2009
PLOT DATE: 09.03.18

Last saved: September 18, 2019, 11:48 AM by PLATESONC
 P:\5509090-5509090\5509090\Drawings\5509090\lombard_gate_chamber_site_plan_090918.dwg
 User: PLATESONC
 Project: Upgrade of Watermain & Sewerage System - Lombard Avenue & Waterfront Drive
 Drawing: Lombard Ave. Outfall Gate Chamber Construction