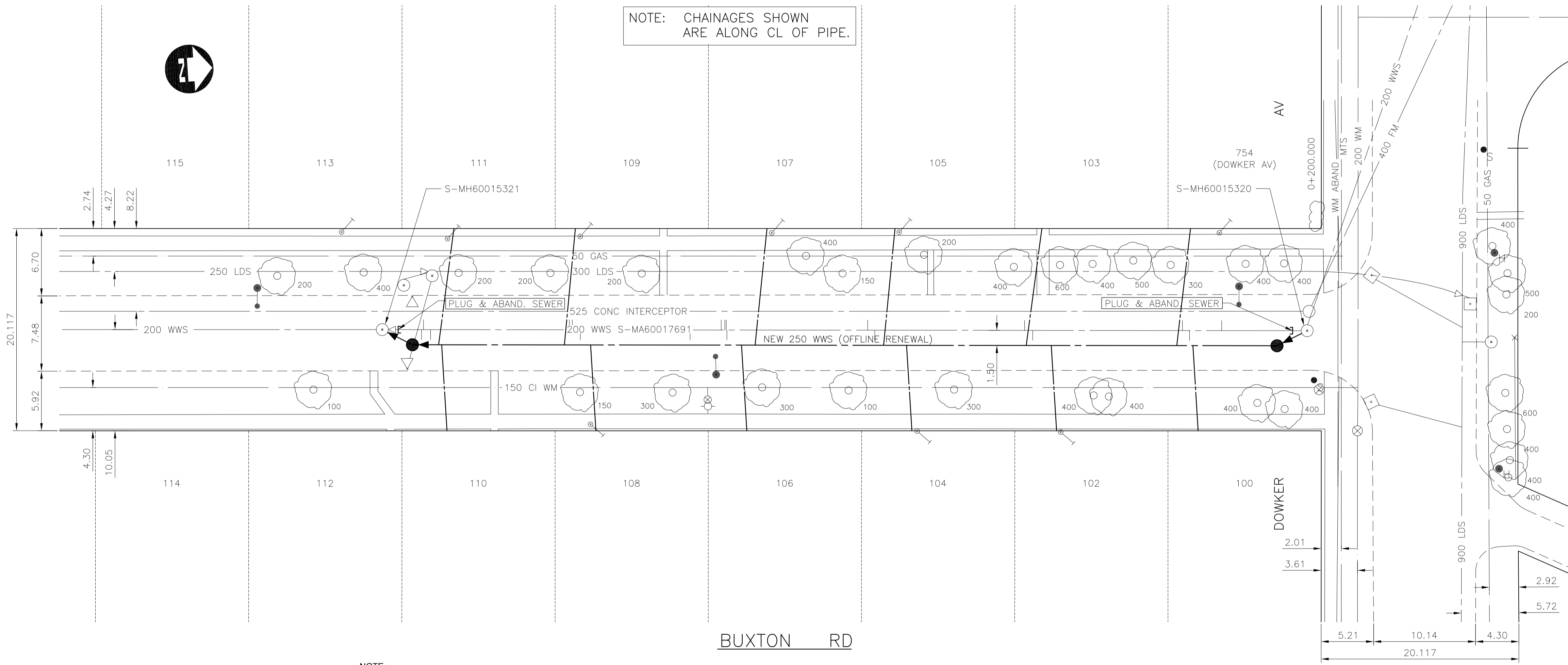


- CONSTRUCTION NOTES:**
- CONTRACTOR SHALL TAKE PRECAUTIONARY STEPS TO AVOID DAMAGE FROM CONSTRUCTION ACTIVITIES TO EXISTING BOULEVARDS AND TREES WITHIN THE LIMITS OF CONSTRUCTION.
  - SEWER AND SEWER SERVICES TO BE INSTALLED BY TRENCHLESS METHODS UNLESS OTHERWISE SPECIFIED.
  - LOCATION OF EXISTING UTILITIES TO BE CONFIRMED IN THE FIELD BY THE CONTRACTOR.
  - LIMITS OF SIDEWALK RENEWALS TO BE FINALIZED IN THE FIELD BY THE CONTRACT ADMINISTRATOR.
  - BOULEVARD REPLACEMENT TO BE FINALIZED IN THE FIELD BY THE CONTRACT ADMINISTRATOR.
  - CONTRACTOR TO PLUG ANY ABANDONED PIPES THAT ARE BROKEN DURING CONSTRUCTION.
  - TRENCHES & EXCAVATIONS WITHIN 1 METRE OF A PAVED AREA INCLUDING SIDEWALKS SHALL BE CLASS 3 BACKFILL.
  - BACKFILL IN BOULEVARD TO BE CLASS 5.
  - CB LEADS TO BE INSTALLED AT MIN. 1.0% SLOPE OR AS DIRECTED BY CONTRACT ADMINISTRATOR.
  - CONTRACTOR TO CONFIRM THE NUMBER AND LOCATION OF SEWER SERVICES TO BE RECONNECTED.

NOTE: CHAINAGES SHOWN ARE ALONG CL OF PIPE.

| EXISTING SEWER SERVICE LOCATION RECORDS |                    |                        |
|---|--------------------|------------------------|
| ADDRESS                                 | SIZE/TYPE          | SERVICE LOCATION AT PL |
| DOWKER AV                               | INFO NOT AVAILABLE | INFO NOT AVAILABLE     |



SEWER SERVICE INFORMATION (S-MA60017691) \*

DISTANCE FROM MH @ DOWKER AV SPL (S-MH60015320)

|        |                      |
|--------|----------------------|
| 8.5 S  | SERVICE CONNECTION W |
| 11.7 S | SERVICE CONNECTION E |
| 12.4 S | SERVICE CONNECTION W |
| 27.3 S | SERVICE CONNECTION E |
| 28.1 S | SERVICE CONNECTION W |
| 43.0 S | SERVICE CONNECTION E |
| 43.7 S | SERVICE CONNECTION W |
| 57.7 S | SERVICE CONNECTION E |
| 57.9 S | SERVICE CONNECTION W |

\* - INFORMATION FROM SEWER VIDEO INSPECTION

SEWER SERVICE INFORMATION (S-MA60017691) \*

DISTANCE FROM 1ST MH S DOWKER AV (S-MH60015321)

|        |                      |
|--------|----------------------|
| 3.9 N  | SERVICE CONNECTION E |
| 4.1 N  | SERVICE CONNECTION W |
| 4.8 N  | SERVICE CONNECTION E |
| 18.6 N | SERVICE CONNECTION W |
| 18.9 N | SERVICE CONNECTION E |
| 19.7 N | SERVICE CONNECTION E |
| 30.6 N | SERVICE CONNECTION E |
| 33.7 N | SERVICE CONNECTION W |
| 34.2 N | SERVICE CONNECTION W |

\* - INFORMATION FROM SEWER VIDEO INSPECTION

**METRIC**  
WHOLE NUMBERS INDICATE MILLIMETRES  
DECIMALIZED NUMBERS INDICATE METRES

NOTE:  
CONTRACTOR TO EXPOSE  
FORCEMAIN BEFORE CROSSING  
WITH SEWER SERVICES.

| 150 mm W.M. | WATERMAIN           | 150 mm W.M. | HYDRO             | 150 mm W.M. | WATERMAIN         | 150 mm W.M. |                   |
|-------------|---------------------|-------------|-------------------|-------------|-------------------|-------------|-------------------|
|             | HYDRANT             |             | M.T.S.            |             | CONCRETE          |             | ASPHALT           |
|             | VALVE               |             | PROPERTY LINE     |             | SURVEY BAR        |             | SERVICE VALVE     |
|             | TREE                |             | LIGHT STANDARD    |             | FENCE             |             | GUY ANCHOR        |
|             | JUNCTION            |             | CULVERT           |             | GAS               |             |                   |
|             | LAND DRAINAGE SEWER |             | WASTE WATER SEWER |             | NORTH/WEST GUTTER |             | SOUTH/EAST GUTTER |
|             | MANHOLE             |             | CATCH BASIN       |             | CURB INLET        |             |                   |
|             | EXISTING            |             | PROPOSED          |             | EXISTING          |             | PROPOSED          |

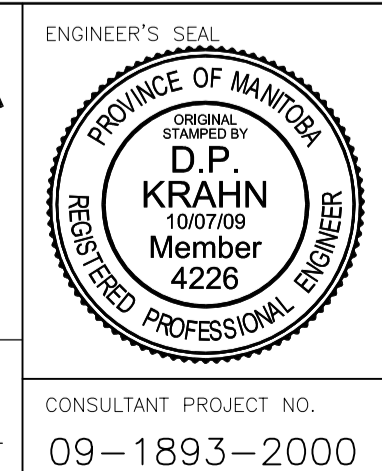
UNDERGROUND STRUCTURES

DATE

NOTE:  
LOCATION OF UNDERGROUND STRUCTURES AS SHOWN ARE BASED ON THE BEST INFORMATION AVAILABLE BUT NO GUARANTEE IS GIVEN THAT ALL EXISTING UTILITIES ARE SHOWN OR THAT THE GIVEN LOCATIONS ARE EXACT. CONFIRMATION OF EXISTENCE AND EXACT LOCATION OF ALL SERVICES MUST BE OBTAINED FROM THE INDIVIDUAL UTILITIES BEFORE PROCEEDING WITH CONSTRUCTION.

| B.M. ELEV. | 64-016    | 230.655 |
|------------|-----------|---------|
| NO.        | REVISIONS | DATE    |

|                   |                   |      |    |
|-------------------|-------------------|------|----|
| DESIGNED BY       | C.L.P.            |      |    |
| DRAWN BY          | A.J.P./S.K.B.     |      |    |
| CHECKED BY        | S.C.C.            |      |    |
| APPROVED BY       | D.P.K.            |      |    |
| HOR. SCALE        | 1 : 250           |      |    |
| VERTICAL          | 1 : 50            |      |    |
| ISSUED FOR TENDER | 10.07.2009 S.C.C. |      |    |
| NO.               | REVISIONS         | DATE | BY |



**THE CITY OF WINNIPEG**  
WATER AND WASTE DEPARTMENT

2009 SEWER RENEWALS AND REPAIRS, CONTRACT 19

**BUXTON ROAD**  
MH AT DOWKER AV. (SPL)  
TO 1ST MH S DOWKER AV.

CITY DRAWING NUMBER  
**9086**

SHEET **01** OF **25**

BID OPPORTUNITY  
**658-2009**

CONSULTANT PROJECT NO.  
**09-1893-2000**

RELEASED FOR CONSTRUCTION

DATE