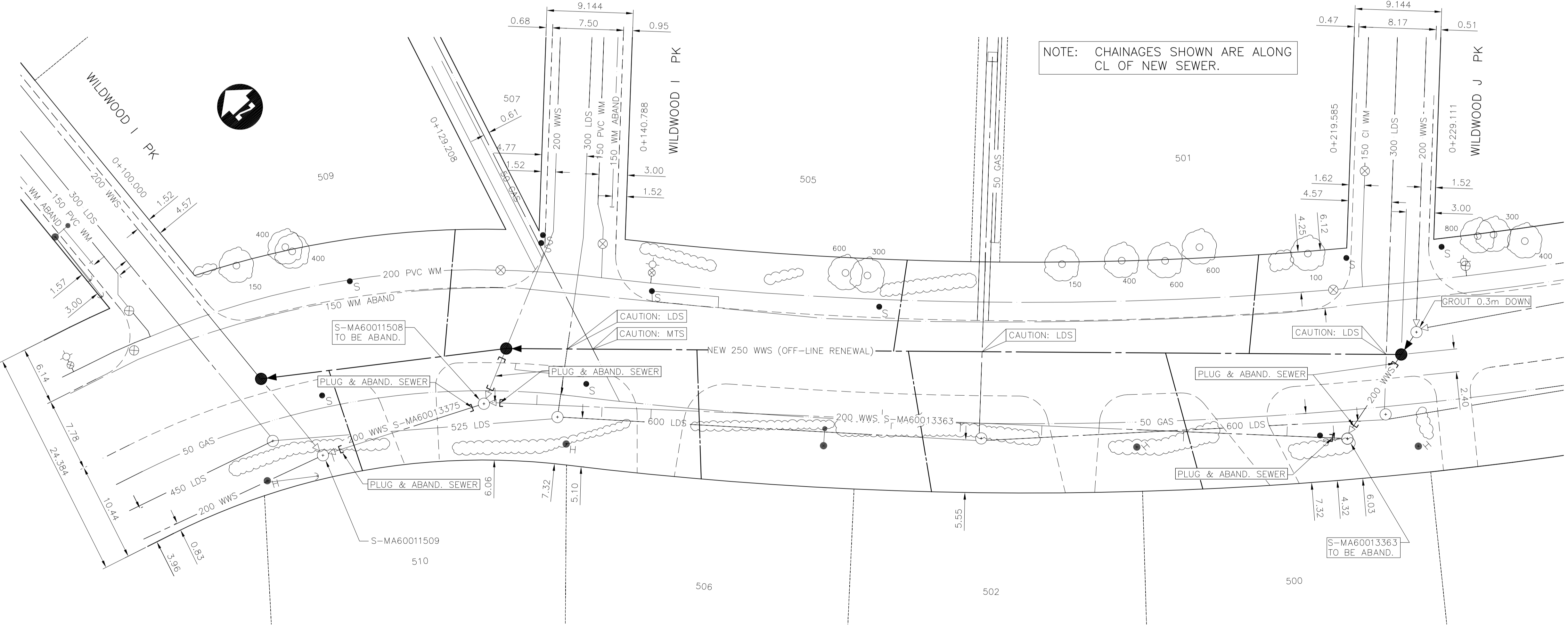


- CONSTRUCTION NOTES:**
- CONTRACTOR SHALL TAKE PRECAUTIONARY STEPS TO AVOID DAMAGE FROM CONSTRUCTION ACTIVITIES TO EXISTING SIDEWALKS AND TREES WITHIN THE LIMITS OF CONSTRUCTION.
 - SEWER AND SEWER SERVICES TO BE INSTALLED BY TRENCHLESS METHODS UNLESS OTHERWISE SPECIFIED.
 - LOCATION OF EXISTING UTILITIES TO BE CONFIRMED IN THE FIELD BY THE CONTRACTOR.
 - LIMITS OF SIDEWALK RENEWALS TO BE FINALIZED IN THE FIELD BY THE CONTRACT ADMINISTRATOR.
 - BOULEVARD REPLACEMENT TO BE FINALIZED IN THE FIELD BY THE CONTRACT ADMINISTRATOR.
 - CONTRACTOR TO PLUG ANY ABANDONED PIPES THAT ARE BROKEN DURING CONSTRUCTION.
 - TRENCHES & EXCAVATIONS WITHIN 1 METRE OF A PAVED AREA INCLUDING SIDEWALKS SHALL BE CLASS 3 BACKFILL.
 - BACKFILL IN BOULEVARD TO BE CLASS 5.
 - CB LEADS TO BE INSTALLED AT MIN. 1.0% SLOPE OR AS DIRECTED BY CONTRACT ADMINISTRATOR.
 - CONTRACTOR TO CONFIRM THE NUMBER AND LOCATION OF SEWER SERVICES TO BE RECONNECTED.



EXISTING SEWER SERVICE LOCATION RECORDS		
ADDRESS	SIZE/TYPE	SERVICE LOCATION AT PL
SOUTH DR	INFO NOT AVAILABLE	INFO NOT AVAILABLE

SEWER SERVICE INFORMATION (S-MA60013363) *	
DISTANCE FROM MH @ WILDWOOD J PK N LEG NPL (S-MH60011497)	
6.4 W	SERVICE CONNECTION N
17.3 W	SERVICE CONNECTION S
32.3 W	SERVICE CONNECTION S
40.9 W	SERVICE CONNECTION S
48.2 W	SERVICE CONNECTION S
49.2 W	SERVICE CONNECTION N
73.6 W	SERVICE CONNECTION S
78.8 W	SERVICE CONNECTION S
85.7 W	SERVICE CONNECTION N
* - INFORMATION FROM SEWER VIDEO INSPECTION	

SEWER SERVICE INFORMATION (S-MA60013375) *	
DISTANCE FROM MH @ WILDWOOD I PK S LEG (S-MH60011508)	
16.9 W	SERVICE CONNECTION S
* - INFORMATION FROM SEWER VIDEO INSPECTION	



METRIC
WHOLE NUMBERS INDICATE MILLIMETRES
DECIMALIZED NUMBERS INDICATE METRES

150 mm W.M.	WATERMAIN	150 mm W.M.	HYDRO	150 mm W.M.	WATERMAIN	150 mm W.M.
	HYDRANT		M.T.S.		CONCRETE	
	VALVE		PROPERTY LINE		SURVEY BAR	
	MANHOLE		TREE		LIGHT STANDARD	
	CATCH BASIN		GUY ANCHOR		LEGEND-PLAN	
	CURB INLET		PROPOSED EXISTING		PROPOSED EXISTING	
	JUNCTIONS		PROPOSED EXISTING		PROPOSED EXISTING	
	CULVERT		PROPOSED EXISTING		PROPOSED EXISTING	
	GAS		PROPOSED EXISTING		PROPOSED EXISTING	
	EXISTING		PROPOSED EXISTING		PROPOSED EXISTING	

UNDERGROUND STRUCTURES

SUPV. U/G STRUCTURES COMMITTEE DATE

NOTE:
LOCATION OF UNDERGROUND STRUCTURES AS SHOWN ARE BASED ON THE BEST INFORMATION AVAILABLE BUT NO GUARANTEE IS GIVEN THAT ALL EXISTING UTILITIES ARE SHOWN OR THAT THE GIVEN LOCATIONS ARE EXACT. CONFIRMATION OF EXISTENCE AND EXACT LOCATION OF ALL SERVICES MUST BE OBTAINED FROM THE INDIVIDUAL UTILITIES BEFORE PROCEEDING WITH CONSTRUCTION.

B.M. ELEV.	64-016	230.655
DESIGNED BY	C.L.P.	
DRAWN BY	A.J.P./S.K.B.	
CHECKED BY	S.C.C.	
APPROVED BY	D.P.K.	
HOR. SCALE	1 : 250	
VERTICAL	1 : 50	
ISSUED FOR TENDER	10.07.2009	S.C.C.
NO. REVISIONS	DATE	BY

RELEASING AUTHORITY

DILLON CONSULTING

ENGINEER'S SEAL

PROVINCE OF MANITOBA

REGISTERED PROFESSIONAL ENGINEER

D.P. KRAHN
Member
4226

CONSULTANT PROJECT NO.
09-1893-2000

RELEASED FOR CONSTRUCTION

DATE

THE CITY OF WINNIPEG
WATER AND WASTE DEPARTMENT

2009 SEWER RENEWALS AND REPAIRS, CONTRACT 19

SOUTH DRIVE
MH AT WILDWOOD I PK. (W LEG)
TO MH AT WILDWOOD J PK. (W LEG)

CITY DRAWING NUMBER
9088

SHEET **03** OF **25**

BID OPPORTUNITY
658-2009