

CONSTRUCTION NOTES:

1. CONTRACTOR SHALL TAKE PRECAUTIONARY STEPS TO AVOID DAMAGE FROM CONSTRUCTION ACTIVITIES TO EXISTING BOULEVARDS AND TREES WITHIN THE LIMITS OF CONSTRUCTION.
2. SEWER AND SEWER SERVICES TO BE INSTALLED BY TRENCHLESS METHODS UNLESS OTHERWISE SPECIFIED.
3. LOCATION OF EXISTING UTILITIES TO BE CONFIRMED IN THE FIELD BY THE CONTRACTOR.
4. LIMITS OF SIDEWALK RENEWALS TO BE FINALIZED IN THE FIELD BY THE CONTRACT ADMINISTRATOR.
5. BOULEVARD REPLACEMENT TO BE FINALIZED IN THE FIELD BY THE CONTRACT ADMINISTRATOR.
6. CONTRACTOR TO PLUG ANY ABANDONED PIPES THAT ARE BROKEN DURING CONSTRUCTION.
7. TRENCHES & EXCAVATIONS WITHIN 1 METRE OF A PAVED AREA INCLUDING SIDEWALKS SHALL BE CLASS 3 BACKFILL.
8. BACKFILL IN BOULEVARD TO BE CLASS 5.
9. CB LEADS TO BE INSTALLED AT MIN. 1.0% SLOPE OR AS DIRECTED BY CONTRACT ADMINISTRATOR.
10. CONTRACTOR TO CONFIRM THE NUMBER AND LOCATION OF SEWER SERVICES TO BE RECONNECTED.

SEWER SERVICE INFORMATION (S-MA6001342) *
 DISTANCE FROM MH @ WILDWOOD B PK S LEG (S-MH60011570)
 NO SEWER SERVICES ON ENTITY
 * - INFORMATION FROM SEWER VIDEO INSPECTION

GENERAL NOTES

1. CONTRACTOR TO VERIFY LIMITS OF SEWER REPAIRS PRIOR TO EXCAVATION BY MEANS OF VIDEO INSPECTION.
2. CONTRACTOR TO ASSIST WITH VISUAL INSPECTION OF EXISTING SERVICES TO DETERMINE IF SERVICE RENEWAL IS REQUIRED.

METRIC

WHOLE NUMBERS INDICATE MILLIMETRES
 DECIMALIZED NUMBERS INDICATE METRES

150 mm W.M.	150 mm W.M.	150 mm W.M.	HYDRO	150 mm W.M.	WATERMAIN	150 mm W.M.
	HYDRANT		M.T.S.		HYDRANT	
	VALVE		CONCRETE		VALVE	
	LAND DRAINAGE SEWER		ASPHALT		LAND DRAINAGE SEWER	
	WASTE WATER SEWER		PROPERTY LINE		WASTE WATER SEWER	
	MANHOLE		SURVEY BAR		MANHOLE	
	CATCH BASIN		SERVICE VALVE		CATCH BASIN	
	CURB INLET		TREE		CURB INLET	
	JUNCTIONS		LIGHT STANDARD		JUNCTIONS	
	CULVERT		FENCE		CULVERT	
	GAS		GUY ANCHOR		GAS	
	EXISTING		PROPOSED		EXISTING	
	LEGEND-PLAN		LEGEND-PROFILE		LEGEND-PLAN	

UNDERGROUND STRUCTURES

SUPV. U/G STRUCTURES COMMITTEE DATE

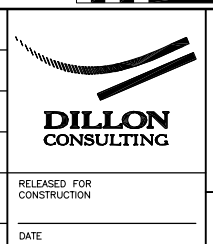
NOTE:
 LOCATION OF UNDERGROUND STRUCTURES AS SHOWN ARE BASED ON THE BEST INFORMATION AVAILABLE. BUT NO GUARANTEE IS GIVEN THAT ALL EXISTING UTILITIES ARE SHOWN OR THAT THE GIVEN LOCATIONS ARE EXACT. CONFIRMATION OF EXISTENCE AND EXACT LOCATION OF ALL SERVICES MUST BE OBTAINED FROM THE INDIVIDUAL UTILITIES BEFORE PROCEEDING WITH CONSTRUCTION.

B.M. ELEV.	NO.	REVISIONS	DATE	BY
64-016 230.655	0	ISSUED FOR TENDER	10.07.2009	S.C.C.

DESIGNED BY C.L.P.
 DRAWN BY A.J.P.
 CHECKED BY S.C.C.
 APPROVED BY D.P.K.

HOR. SCALE 1:500
 VERTICAL

RELEASED FOR CONSTRUCTION
 DATE AUG. 26, 2009



THE CITY OF WINNIPEG
 WATER AND WASTE DEPARTMENT

2009 SEWER RENEWALS AND REPAIRS, CONTRACT 19
 NORTH DRIVE
 MH AT WILDWOOD B PK (S.LEG) TO MH AT WILDWOOD B PK (N.LEG)

CITY DRAWING NUMBER 9095
 SHEET 10 OF 25
 BID OPPORTUNITY 658-2009

CONSULTANT PROJECT NO. 09-1893-2000