

CONSTRUCTION NOTES:

- CONTRACTOR SHALL TAKE PRECAUTIONARY STEPS TO AVOID DAMAGE FROM CONSTRUCTION ACTIVITIES TO EXISTING BOULEVARDS AND TREES WITHIN THE LIMITS OF CONSTRUCTION.
- SEWER AND SEWER SERVICES TO BE INSTALLED BY TRENCHLESS METHODS UNLESS OTHERWISE SPECIFIED.
- LOCATION OF EXISTING UTILITIES TO BE CONFIRMED IN THE FIELD BY THE CONTRACTOR.
- LIMITS OF SIDEWALK RENEWALS TO BE FINALIZED IN THE FIELD BY THE CONTRACT ADMINISTRATOR.
- BOULEVARD REPLACEMENT TO BE FINALIZED IN THE FIELD BY THE CONTRACT ADMINISTRATOR.
- CONTRACTOR TO PLUG ANY ABANDONED PIPES THAT ARE BROKEN DURING CONSTRUCTION.
- TRENCHES & EXCAVATIONS WITHIN 1 METRE OF A PAVED AREA INCLUDING SIDEWALKS SHALL BE CLASS 3 BACKFILL.
- BACKFILL IN BOULEVARD TO BE CLASS 5.
- CB LEADS TO BE INSTALLED AT MIN. 1.0% SLOPE OR AS DIRECTED BY CONTRACT ADMINISTRATOR.
- CONTRACTOR TO CONFIRM THE NUMBER AND LOCATION OF SEWER SERVICES TO BE RECONNECTED.

SEWER SERVICE INFORMATION (S-MA60013419) *	
DISTANCE FROM 1ST MH W NORTH DR (S-MH60011552)	
1.8 N	SERVICE CONNECTION E
11.3 N	SERVICE CONNECTION W
12.1 N	SERVICE CONNECTION E
22.3 N	SERVICE CONNECTION E
31.1 N	SERVICE CONNECTION E

* - INFORMATION FROM SEWER VIDEO INSPECTION

SEWER SERVICE INFORMATION (S-MA60013438) *	
DISTANCE FROM MH @ WILDWOOD A PK N LEG (S-MH60011578)	
NO SEWER SERVICES ON ENTITY	

* - INFORMATION FROM SEWER VIDEO INSPECTION

GENERAL NOTES

- CONTRACTOR TO VERIFY LIMITS OF SEWER REPAIRS PRIOR TO EXCAVATION BY MEANS OF VIDEO INSPECTION.
- CONTRACTOR TO ASSIST WITH VISUAL INSPECTION OF EXISTING SERVICES TO DETERMINE IF SERVICE RENEWAL IS REQUIRED.

METRIC

WHOLE NUMBERS INDICATE MILLIMETRES
DECIMALIZED NUMBERS INDICATE METRES

150 mm W.M.	150 mm W.M.	150 mm W.M.	HYDRO	150 mm W.M.	150 mm W.M.	150 mm W.M.
	HYDRANT		M.T.S.		HYDRANT	
	VALVE		CONCRETE		VALVE	
	LAND DRAINAGE SEWER		ASPHALT		LAND DRAINAGE SEWER	
	WASTE WATER SEWER		PROPERTY LINE		WASTE WATER SEWER	
	MANHOLE		SURVEY BAR		MANHOLE	
	CATCH BASIN		SERVICE VALVE		CATCH BASIN	
	CURB INLET		TREE		CURB INLET	
	JUNCTIONS		LIGHT STANDARD		JUNCTIONS	
	CULVERT		FENCE		CULVERT	
	GAS		GUY ANCHOR		GAS	
	EXISTING LEGEND-PLAN		PROPOSED		EXISTING LEGEND-PROFILE	

UNDERGROUND STRUCTURES

SUPV. U/G STRUCTURES COMMITTEE DATE

NOTE:
LOCATION OF UNDERGROUND STRUCTURES AS SHOWN ARE BASED ON THE BEST INFORMATION AVAILABLE. BUT NO GUARANTEE IS GIVEN THAT ALL EXISTING UTILITIES ARE SHOWN OR THAT THE GIVEN LOCATIONS ARE EXACT. CONFIRMATION OF EXISTENCE AND EXACT LOCATION OF ALL SERVICES MUST BE OBTAINED FROM THE INDIVIDUAL UTILITIES BEFORE PROCEEDING WITH CONSTRUCTION.

B.M. ELEV.	64-016	230.655
NO.	REVISIONS	DATE

DESIGNED BY C.L.P.

DRAWN BY A.J.P.

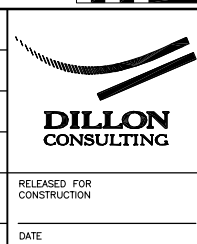
CHECKED BY S.C.C.

APPROVED BY D.P.K.

HOR. SCALE 1:500

VERTICAL

DATE AUG. 26, 2009



THE CITY OF WINNIPEG
WATER AND WASTE DEPARTMENT

2009 SEWER RENEWALS AND REPAIRS, CONTRACT 19

NORTH DRIVE
MH AT WILDWOOD A PK (S.LEG) TO MH AT WILDWOOD A PK (N.LEG)

CITY DRAWING NUMBER	9096
SHEET	11 OF 25
BID OPPORTUNITY	658-2009

