

- CONSTRUCTION NOTES:**
- CONTRACTOR SHALL TAKE PRECAUTIONARY STEPS TO AVOID DAMAGE FROM CONSTRUCTION ACTIVITIES TO EXISTING BOULEVARDS AND TREES WITHIN THE LIMITS OF CONSTRUCTION.
 - SEWER AND SEWER SERVICES TO BE INSTALLED BY TRENCHLESS METHODS UNLESS OTHERWISE SPECIFIED.
 - LOCATION OF EXISTING UTILITIES TO BE CONFIRMED IN THE FIELD BY THE CONTRACTOR.
 - LIMITS OF SIDEWALK RENEWALS TO BE FINALIZED IN THE FIELD BY THE CONTRACT ADMINISTRATOR.
 - BOULEVARD REPLACEMENT TO BE FINALIZED IN THE FIELD BY THE CONTRACT ADMINISTRATOR.
 - CONTRACTOR TO PLUG ANY ABANDONED PIPES THAT ARE BROKEN DURING CONSTRUCTION.
 - TRENCHES & EXCAVATIONS WITHIN 1 METRE OF A PAVED AREA INCLUDING SIDEWALKS SHALL BE CLASS 3 BACKFILL.
 - BACKFILL IN BOULEVARD TO BE CLASS 5.
 - CB LEADS TO BE INSTALLED AT MIN. 1.0% SLOPE OR AS DIRECTED BY CONTRACT ADMINISTRATOR.
 - CONTRACTOR TO CONFIRM THE NUMBER AND LOCATION OF SEWER SERVICES TO BE RECONNECTED.

SEWER SERVICE INFORMATION (S-MA60017609) *

DISTANCE FROM 1ST MH N OF CRANE AV (S-MH60015234)

2.0 N	SERVICE CONNECTION E
7.4 N	SERVICE CONNECTION W
8.8 N	SERVICE CONNECTION W
16.6 N	SERVICE CONNECTION E
23.7 N	SERVICE CONNECTION W
32.2 N	SERVICE CONNECTION E
39.1 N	SERVICE CONNECTION W
46.9 N	SERVICE CONNECTION E
50.1 N	SERVICE CONNECTION E

* - INFORMATION FROM SEWER VIDEO INSPECTION

SEWER SERVICE INFORMATION (S-MA60017619) *

DISTANCE FROM 1ST MH N OF CRANE AV (S-MH60015234)

6.6 S	SERVICE CONNECTION W
10.6 S	SERVICE CONNECTION W
12.1 S	SERVICE CONNECTION E
16.7 S	SERVICE CONNECTION W

* - INFORMATION FROM SEWER VIDEO INSPECTION

SEWER SERVICE INFORMATION (S-MA60017619) *

DISTANCE FROM MH AT CRANE AV (S-MH60015188)

18.6 N	SERVICE CONNECTION W
22.4 N	SERVICE CONNECTION E
31.0 N	SERVICE CONNECTION E
32.5 N	SERVICE CONNECTION W
32.5 N	SERVICE CONNECTION E

* - INFORMATION FROM SEWER VIDEO INSPECTION

SEWER SERVICE INFORMATION (S-MA60017609) *

DISTANCE FROM MH @ SANDRA BAY N LEG (S-MH60015232)

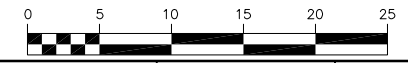
4.9 S	SERVICE CONNECTION E
-------	----------------------

* - INFORMATION FROM SEWER VIDEO INSPECTION

SANDRA BY E. LEG

- GENERAL NOTES**
- CONTRACTOR TO VERIFY LIMITS OF SEWER REPAIRS PRIOR TO EXCAVATION BY MEANS OF VIDEO INSPECTION.
 - CONTRACTOR TO ASSIST WITH VISUAL INSPECTION OF EXISTING SERVICES TO DETERMINE IF SERVICE RENEWAL IS REQUIRED.

METRIC
WHOLE NUMBERS INDICATE MILLIMETRES
DECIMALIZED NUMBERS INDICATE METRES



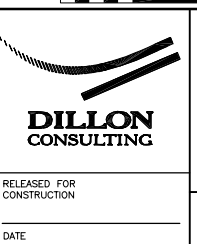
150 mm W.M.	150 mm W.M.	150 mm W.M.	150 mm W.M.	150 mm W.M.	150 mm W.M.	150 mm W.M.	150 mm W.M.
	HYDRANT		VALVE		M.T.S.		HYDRANT
	CONCRETE VALVE		ASPHALT		PROPERTY LINE		HYDRANT
	LAND DRAINAGE SEWER		SURVEY BAR		SERVICE VALVE		HYDRANT
	WASTE WATER SEWER		TREE		LIGHT STANDARD		HYDRANT
	MANHOLE		FENCE		GUY ANCHOR		HYDRANT
	CATCH BASIN		NORTH/WEST GUTTER		SOUTH/EAST GUTTER		HYDRANT
	CURB INLET		EXISTING		PROPOSED		HYDRANT
	JUNCTIONS		EXISTING		PROPOSED		HYDRANT
	CULVERT		EXISTING		PROPOSED		HYDRANT
	GAS		EXISTING		PROPOSED		HYDRANT
	EXISTING		PROPOSED		EXISTING		PROPOSED
	LEGEND-PLAN		LEGEND-PLAN		LEGEND-PROFILE		LEGEND-PROFILE

UNDERGROUND STRUCTURES

SUPV. U/G STRUCTURES COMMITTEE DATE

NOTE:
LOCATION OF UNDERGROUND STRUCTURES AS SHOWN ARE BASED ON THE BEST INFORMATION AVAILABLE. BUT NO GUARANTEE IS GIVEN THAT ALL EXISTING UTILITIES ARE SHOWN OR THAT THE GIVEN LOCATIONS ARE EXACT. CONFIRMATION OF EXISTENCE AND EXACT LOCATION OF ALL SERVICES MUST BE OBTAINED FROM THE INDIVIDUAL UTILITIES BEFORE PROCEEDING WITH CONSTRUCTION.

B.M. ELEV.	64-016	230.655
DESIGNED BY	C.L.P.	
DRAWN BY	A.J.P.	
CHECKED BY	S.C.C.	
APPROVED BY	D.P.K.	
HOR. SCALE	1:500	
VERTICAL		
ISSUED FOR TENDER	10/07/2009	S.C.C.
NO. REVISIONS	DATE	BY
0		
	DATE	AUG. 26, 2009



THE CITY OF WINNIPEG
WATER AND WASTE DEPARTMENT

2009 SEWER RENEWALS AND REPAIRS, CONTRACT 19
SANDRA BAY E. LEG
MH AT SANDRA BY (N.LEG)
TO MH AT CRANE AV

CITY DRAWING NUMBER
9097
SHEET 12 OF 25

BID OPPORTUNITY
658-2009

CONSULTANT PROJECT NO.
09-1893-2000