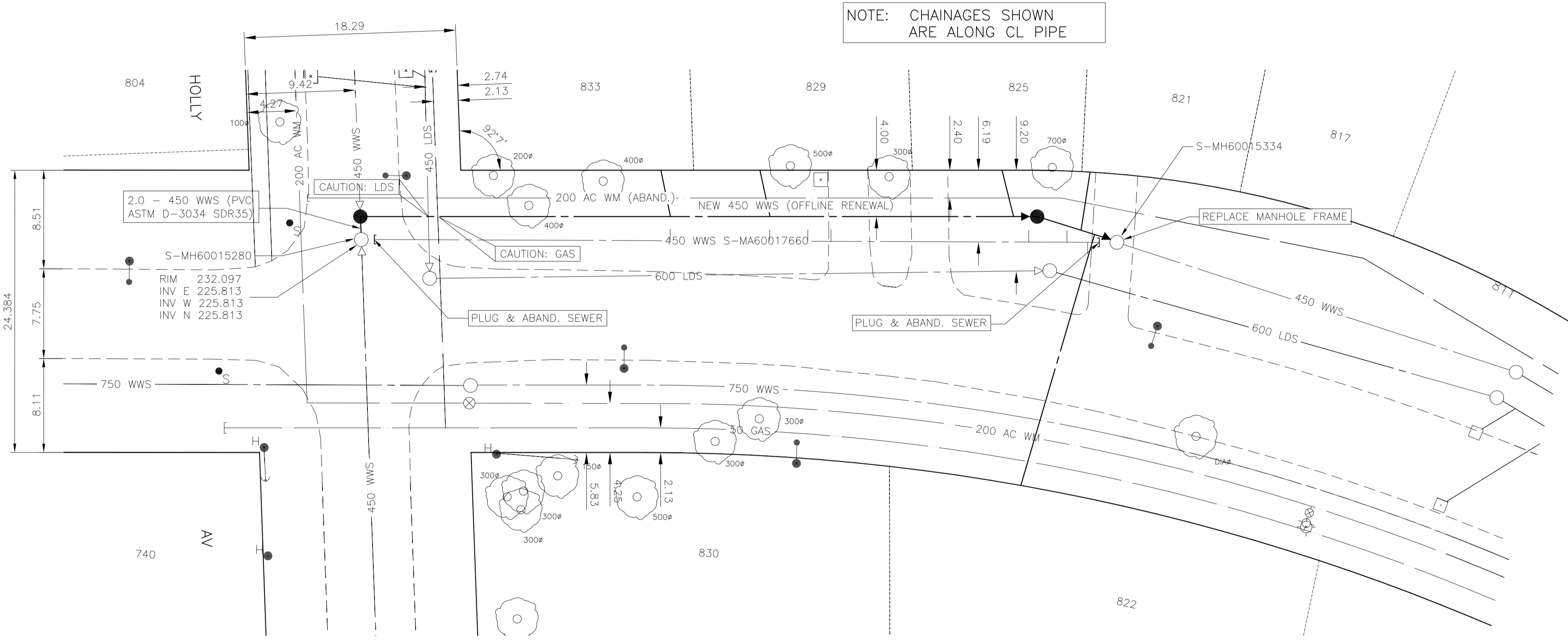


- CONSTRUCTION NOTES:**
- CONTRACTOR SHALL TAKE PRECAUTIONARY STEPS TO AVOID DAMAGE FROM CONSTRUCTION ACTIVITIES TO EXISTING BOULEVARDS AND TREES WITHIN THE LIMITS OF CONSTRUCTION.
  - SEWER AND SEWER SERVICES TO BE INSTALLED BY TRENCHLESS METHODS UNLESS OTHERWISE SPECIFIED.
  - LOCATION OF EXISTING UTILITIES TO BE CONFIRMED IN THE FIELD BY THE CONTRACTOR.
  - LIMITS OF SIDEWALK RENEWALS TO BE FINALIZED IN THE FIELD BY THE CONTRACT ADMINISTRATOR.
  - BOULEVARD REPLACEMENT TO BE FINALIZED IN THE FIELD BY THE CONTRACT ADMINISTRATOR.
  - CONTRACTOR TO PLUG ANY ABANDONED PIPES THAT ARE BROKEN DURING CONSTRUCTION.
  - TRENCHES & EXCAVATIONS WITHIN 1 METRE OF A PAVED AREA INCLUDING SIDEWALKS SHALL BE CLASS 3 BACKFILL.
  - BACKFILL IN BOULEVARD TO BE CLASS 5.
  - CB LEADS TO BE INSTALLED AT MIN. 1.0% SLOPE OR AS DIRECTED BY CONTRACT ADMINISTRATOR.
  - CONTRACTOR TO CONFIRM THE NUMBER AND LOCATION OF SEWER SERVICES TO BE RECONNECTED.



NOTE: CHAINAGES SHOWN ARE ALONG CL PIPE

EXISTING SEWER SERVICE LOCATION RECORDS		
ADDRESS	SIZE/TYPE	SERVICE LOCATION AT PL
SOUTH DR	INFO NOT AVAILABLE	INFO NOT AVAILABLE

SEWER SERVICE INFORMATION (S-MA60017660) *	
DISTANCE FROM MH @ HOLLY AV (S-MH60015280)	
26.7 N	SERVICE CONNECTION W
35.3 N	SERVICE CONNECTION W
38.6 N	SERVICE CONNECTION W
40.6 N	SERVICE CONNECTION W
57.7 N	SERVICE CONNECTION W
61.0 N	SERVICE CONNECTION W
62.8 N	SERVICE CONNECTION E

\* - INFORMATION FROM SEWER VIDEO INSPECTION

**METRIC**

WHOLE NUMBERS INDICATE MILLIMETRES  
DECIMALIZED NUMBERS INDICATE METRES

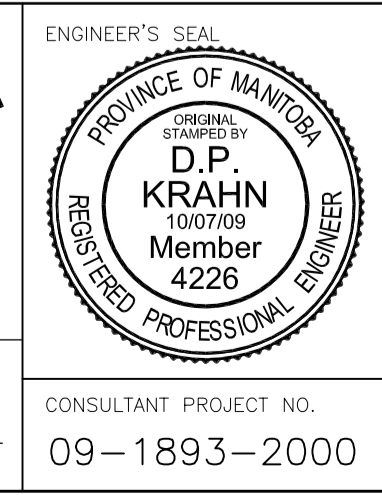
150 mm W.M.	WATERMAIN	150 mm W.M.	HYDRO	150 mm W.M.	WATERMAIN	150 mm W.M.	WATERMAIN
Hydrant	HYDRANT	Hydrant	M.T.S.	Hydrant	HYDRANT	Hydrant	HYDRANT
Valve	VALVE	Valve	CONCRETE	Valve	VALVE	Valve	VALVE
300 mm L.D.S.	LAND DRAINAGE SEWER	300 mm L.D.S.	ASPHALT	300 mm L.D.S.	LAND DRAINAGE SEWER	300 mm L.D.S.	LAND DRAINAGE SEWER
250 mm W.W.S.	WASTE WATER SEWER	250 mm W.W.S.	PROPERTY LINE	250 mm W.W.S.	WASTE WATER SEWER	250 mm W.W.S.	WASTE WATER SEWER
Manhole	MANHOLE	Manhole	SURVEY BAR	Manhole	MANHOLE	Manhole	MANHOLE
Catch Basin	CATCH BASIN	Catch Basin	SERVICE VALVE	Catch Basin	CATCH BASIN	Catch Basin	CATCH BASIN
Curb Inlet	CURB INLET	Curb Inlet	TREE	Curb Inlet	CURB INLET	Curb Inlet	CURB INLET
Junctions	JUNCTIONS	Junctions	LIGHT STANDARD	Junctions	JUNCTIONS	Junctions	JUNCTIONS
Culvert	CULVERT	Culvert	FENCE	Culvert	CULVERT	Culvert	CULVERT
Gas	GAS	Gas	GUY ANCHOR	Gas	GAS	Gas	GAS
EXISTING	LEGEND-PLAN	PROPOSED	EXISTING	PROPOSED	EXISTING	PROPOSED	EXISTING
Legend-Plan	LEGEND-PLAN	Proposed	Legend-Profile	LEGEND-PROFILE	Proposed	Legend-Profile	LEGEND-PROFILE

**UNDERGROUND STRUCTURES**

SUPPLY U/S STRUCTURES COMMITTEE DATE

NOTE:  
LOCATION OF UNDERGROUND STRUCTURES AS SHOWN ARE BASED ON THE BEST INFORMATION AVAILABLE BUT NO GUARANTEE IS GIVEN THAT ALL EXISTING UTILITIES ARE SHOWN OR THAT THE GIVEN LOCATIONS ARE EXACT. CONFIRMATION OF EXISTENCE AND EXACT LOCATION OF ALL SERVICES MUST BE OBTAINED FROM THE INDIVIDUAL UTILITIES BEFORE PROCEEDING WITH CONSTRUCTION.

B.M. ELEV.	64-0116	230.685
DESIGNED BY	C.L.P.	
DRAWN BY	A.J.P./S.K.B.	
CHECKED BY	S.C.C.	
APPROVED BY	D.P.K.	
HOR. SCALE	1 : 250	
VERTICAL	1 : 50	
ISSUED FOR TENDER	10.07.2009	S.C.C.
NO. REVISIONS	DATE	BY
0		
	AUG. 26, 2009	



**THE CITY OF WINNIPEG**  
WATER AND WASTE DEPARTMENT

2009 SEWER RENEWALS AND REPAIRS, CONTRACT 19

**SOUTH DRIVE**  
MH AT HOLLY AV. TO 1ST MH N OF HOLLY AV

CITY DRAWING NUMBER  
**9099**

SHEET **14** OF **25**

BID OPPORTUNITY  
**658-2009**

CONSULTANT PROJECT NO.  
**09-1893-2000**