

**CONSTRUCTION NOTES:**

1. CONTRACTOR SHALL TAKE PRECAUTIONARY STEPS TO AVOID DAMAGE FROM CONSTRUCTION ACTIVITIES TO EXISTING BOULEVARDS AND TREES WITHIN THE LIMITS OF CONSTRUCTION.
2. SEWER AND SEWER SERVICES TO BE INSTALLED BY TRENCHLESS METHODS UNLESS OTHERWISE SPECIFIED.
3. LOCATION OF EXISTING UTILITIES TO BE CONFIRMED IN THE FIELD BY THE CONTRACTOR.
4. LIMITS OF SIDEWALK RENEWALS TO BE FINALIZED IN THE FIELD BY THE CONTRACT ADMINISTRATOR.
5. BOULEVARD REPLACEMENT TO BE FINALIZED IN THE FIELD BY THE CONTRACT ADMINISTRATOR.
6. CONTRACTOR TO PLUG ANY ABANDONED PIPES THAT ARE BROKEN DURING CONSTRUCTION.
7. TRENCHES & EXCAVATIONS WITHIN 1 METRE OF A PAVED AREA INCLUDING SIDEWALKS SHALL BE CLASS 3 BACKFILL.
8. BACKFILL IN BOULEVARD TO BE CLASS 5.
9. CB LEADS TO BE INSTALLED AT MIN. 1.0% SLOPE OR AS DIRECTED BY CONTRACT ADMINISTRATOR.
10. CONTRACTOR TO CONFIRM THE NUMBER AND LOCATION OF SEWER SERVICES TO BE RECONNECTED.

SEWER SERVICE INFORMATION (S-MA60013419) *	
DISTANCE FROM 1ST MH W NORTH DR (S-MH60011552)	
1.8 N	SERVICE CONNECTION E
11.3 N	SERVICE CONNECTION W
12.1 N	SERVICE CONNECTION E
22.3 N	SERVICE CONNECTION E
31.1 N	SERVICE CONNECTION E

\* - INFORMATION FROM SEWER VIDEO INSPECTION

**WILDWOOD A PK S. LEG**

**GENERAL NOTES**

1. CONTRACTOR TO VERIFY LIMITS OF SEWER REPAIRS PRIOR TO EXCAVATION BY MEANS OF VIDEO INSPECTION.
2. CONTRACTOR TO ASSIST WITH VISUAL INSPECTION OF EXISTING SERVICES TO DETERMINE IF SERVICE RENEWAL IS REQUIRED.

**METRIC**

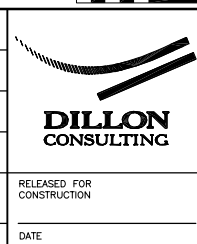
WHOLE NUMBERS INDICATE MILLIMETRES  
DECIMALIZED NUMBERS INDICATE METRES

150 mm W.M.	150 mm W.M.	150 mm W.M.	HYDRO	150 mm W.M.	150 mm W.M.	150 mm W.M.
⊕	HYDRANT	⊕	M.T.S.	⊕	HYDRANT	⊕
⊗	VALVE	⊗	CONCRETE	⊗	VALVE	⊗
300 mm L.D.S.	LAND DRAINAGE SEWER	300 mm L.D.S.	ASPHALT	300 mm L.D.S.	LAND DRAINAGE SEWER	300 mm L.D.S.
250 mm W.W.S.	WASTE WATER SEWER	250 mm W.W.S.	PROPERTY LINE	250 mm W.W.S.	WASTE WATER SEWER	250 mm W.W.S.
○	MANHOLE	⊕	SURVEY BAR	⊕	Q. PROFILE	⊕
□	CATCH BASIN	⊕	SERVICE VALVE	⊕	NORTH/WEST GUTTER	⊕
▽	CURB INLET	⊕	TREE	⊕	SOUTH/EAST GUTTER	⊕
+	JUNCTIONS	+	LIGHT STANDARD	+		+
⊕	CULVERT	⊕	FENCE	⊕		⊕
⊕	GAS	⊕	GUY ANCHOR	⊕		⊕
---	EXISTING	---	PROPOSED	---	EXISTING	---
---	LEGEND-PLAN	---	PROPOSED	---	LEGEND-PROFILE	---

UNDERGROUND STRUCTURES	
SUPV. U/G STRUCTURES COMMITTEE	DATE
NOTE: LOCATION OF UNDERGROUND STRUCTURES AS SHOWN ARE BASED ON THE BEST INFORMATION AVAILABLE. BUT NO GUARANTEE IS GIVEN THAT ALL EXISTING UTILITIES ARE SHOWN OR THAT THE GIVEN LOCATIONS ARE EXACT. CONFIRMATION OF EXISTENCE AND EXACT LOCATION OF ALL SERVICES MUST BE OBTAINED FROM THE INDIVIDUAL UTILITIES BEFORE PROCEEDING WITH CONSTRUCTION.	

B.M. ELEV.	64-016	230.655
NO.	REVISIONS	DATE
0	ISSUED FOR TENDER	10.07.2009

DESIGNED BY	C.L.P.
DRAWN BY	A.J.P.
CHECKED BY	S.C.C.
APPROVED BY	D.P.K.
HOR. SCALE	1:500
VERTICAL	
DATE	AUG. 26, 2009



**THE CITY OF WINNIPEG**  
WATER AND WASTE DEPARTMENT

2009 WATERMAIN RENEWALS, SEWER RENEWALS AND REPAIRS, CONTRACT 19  
**WILDWOOD A PK (S.LEG)**  
1ST MH W. OF NORTH DR  
TO MH AT NORTH DR

CITY DRAWING NUMBER	9101
SHEET	16 OF 25
BID OPPORTUNITY	525-2009

