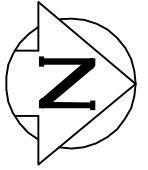


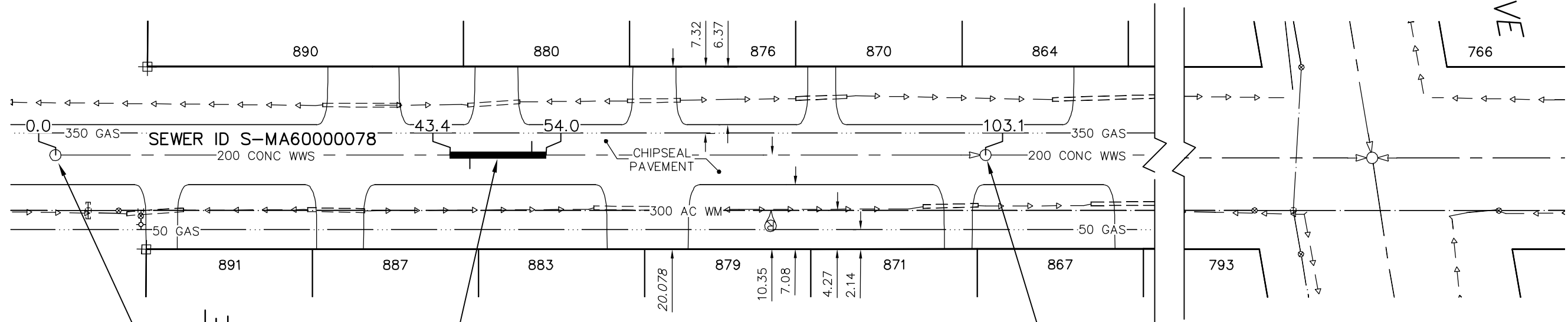
NOTES:

1. BACKFILL UNDER PAVEMENT, IN SIDEWALKS, & WITHIN 1.0 m OF PAVEMENT TO BE CLASS 3.
2. CONFIRM LIMITS OF REPAIR IN PRESENCE OF THE CONTRACT ADMINISTRATOR BY CCTV.



COMMUNITY ROW

RANNOCK AVE



MH ID S-MH60000001  
RIM 237.13  
INV N 233.06

RIDGEWOOD AVE

10.60 OF 200 DR35 PVC SEWER  
REPAIR (SD-022B) WITH 2  
SERVICE CONNECTIONS

MH ID S-MH60000019  
RIM 236.86  
INV N 232.65  
INV S 232.65

SEWER JUNCTION INFORMATION FROM SEWER VIDEO INSPECTION SEWER ID S-MA60000078				
DISTANCE FROM MH ID S-MH600000001				
45.1	N	150ø	TOP	CN
52.4	N	200ø	WEST	CXI

ENGINEER'S SEAL

ORIGINAL  
SIGNED BY  
S.R.J.  
COURNOYER  
09/09/16

BID OPPORTUNITY: 669-2009  
FILENAME : 9001.dwg  
PLOT DATE : 2009 09 17

LEGEND:

52.0 | MEASUREMENT TO REPAIR FROM REFERENCE MH SHOWN THUS...

0.0

METRIC

WHOLE NUMBERS INDICATE MILLIMETRES  
DECIMALIZED NUMBERS INDICATE METRES

B.M. ELEV.	FIELD BOOK #:	<b>CITY OF WINNIPEG WATER AND WASTE ENGINEERING DIVISION</b>		<b>THE CITY OF WINNIPEG WATER AND WASTE DEPARTMENT</b>	
POSTED TO LBIS		DESIGNED BY: AMC	CHECKED BY: SC	2009 SEWER REPAIRS CONTRACT 45	
		DRAWN BY: CJH	APPROVED BY: KZ	COMMUNITY ROW	
		HOR. SCALE 1:500 VERTICAL	RELEASED FOR CONSTRUCTION	4TH MH S OF RANNOCK AVENUE TO 3RD MH S OF RANNOCK AVENUE	
NO.	REVISIONS	DATE	BY	DATE	2009 09 17
				SHEET 4 OF 23 CITY DRAWING NUMBER 9001	