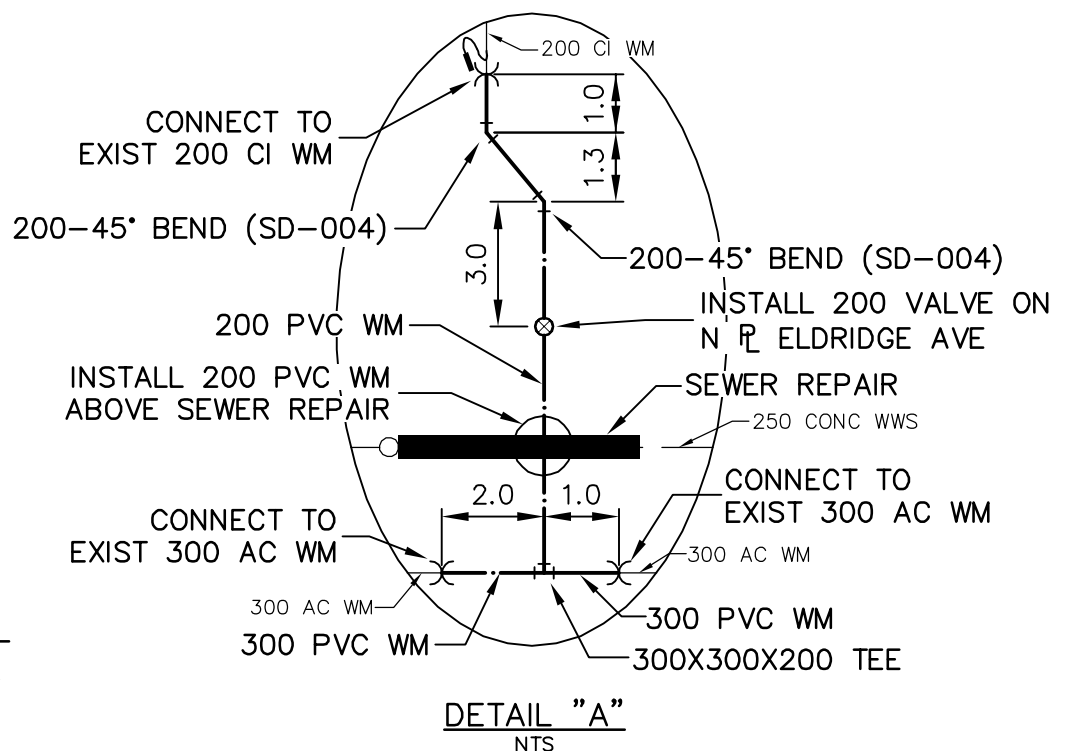
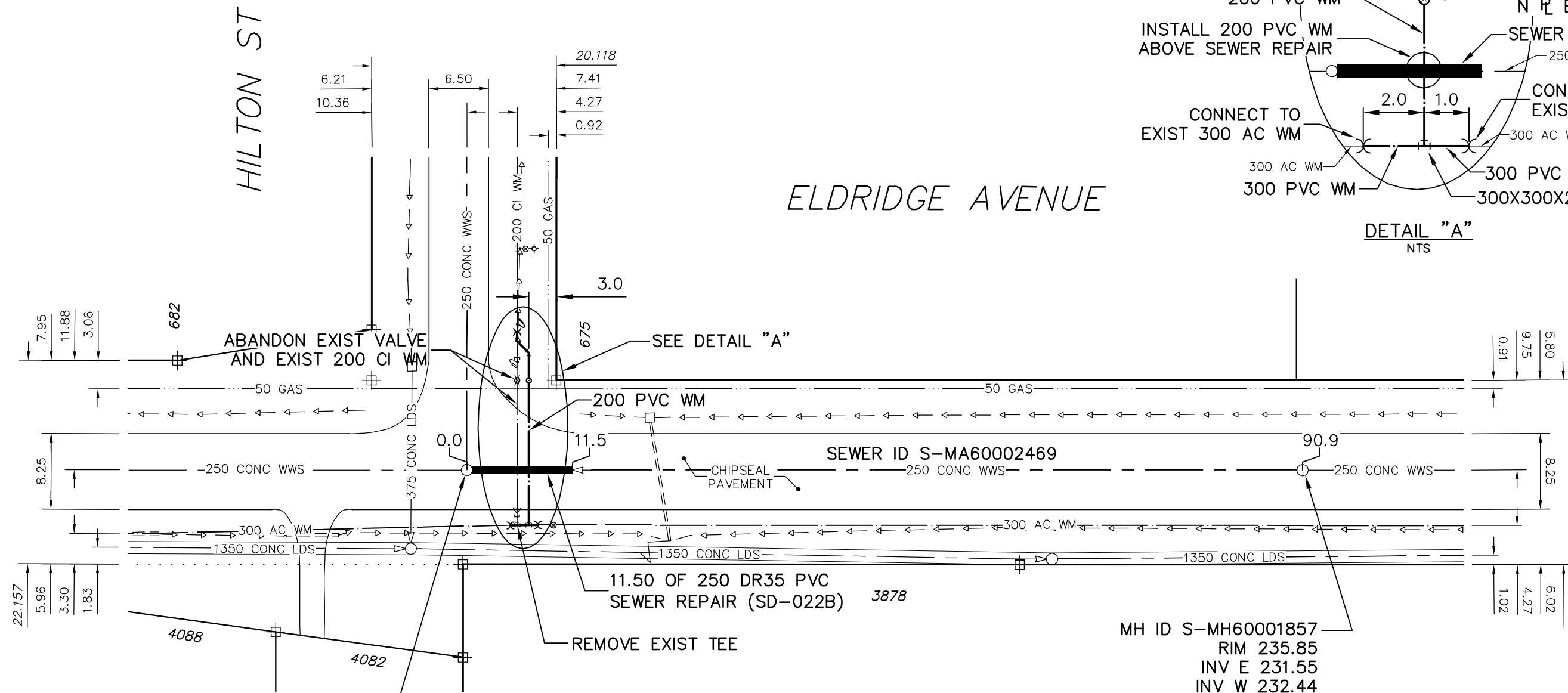


NOTES:

1. BACKFILL UNDER PAVEMENT, IN SIDEWALKS, & WITHIN 1.0 m OF PAVEMENT TO BE CLASS 3.
2. CONFIRM LIMITS OF REPAIR IN PRESENCE OF THE CONTRACT ADMINISTRATOR BY CCTV.



ENGINEER'S SEAL

ORIGINAL
SIGNED BY
S.R.J.
COURNOYER
09/09/16

BID OPPORTUNITY: 669-2009
FILENAME : 9004.dwg
PLOT DATE : 2009 09 17

SEWER JUNCTION INFORMATION FROM SEWER VIDEO INSPECTION SEWER ID S-MA60002469
DISTANCE FROM MH ID S-MH60001824
NO JUNCTIONS WITHIN REPAIRS

LEGEND:

52.0 | MEASUREMENT TO REPAIR FROM REFERENCE MH SHOWN THUS... 0.0

METRIC
WHOLE NUMBERS INDICATE MILLIMETRES
DECIMALIZED NUMBERS INDICATE METRES

B.M. ELEV.	FIELD BOOK #:	CITY OF WINNIPEG WATER AND WASTE ENGINEERING DIVISION		THE CITY OF WINNIPEG WATER AND WASTE DEPARTMENT	
POSTED TO LBIS		DESIGNED BY: AMC	CHECKED BY: SC	2009 SEWER REPAIRS CONTRACT 45	
		DRAWN BY: C.J.H.	APPROVED BY: K.Z.	ELDRIDGE AVENUE	
		HOR. SCALE: 1:500	RELEASED FOR CONSTRUCTION	1ST MH E OF HILTON STREET TO MH AT HILTON STREET	
NO. REVISIONS	DATE BY	DATE: 2009 09 17	DATE	SHEET 7 OF 23 CITY DRAWING NUMBER 9004	