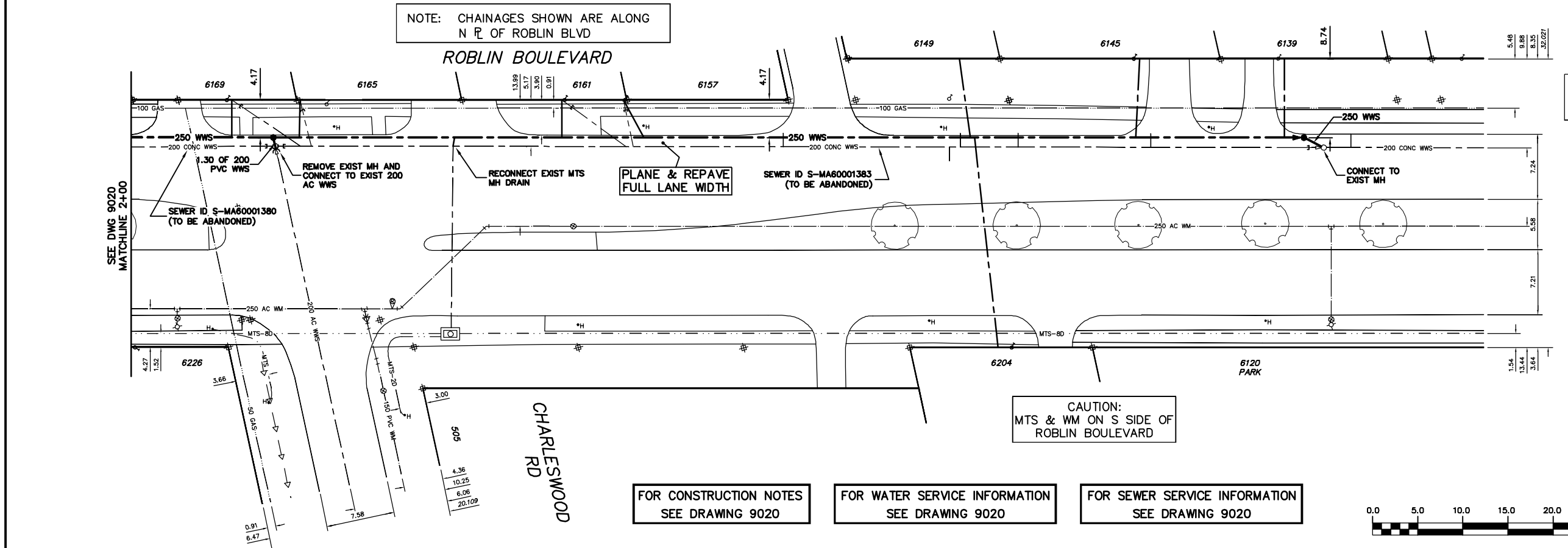


SEWER JUNCTION INFORMATION FROM SEWER VIDEO INSPECTION SEWER ID S-MA60001383			
DISTANCE FROM MH ID S-MH60001010			
2.8	E	100#	NORTH CN
4.0	E	100#	NORTH CN
19.7	E	100#	SOUTH CN
38.9	E	100#	NORTH CN
39.7	E	100#	NORTH CN
56.3	E	100#	NORTH JN
74.7	E	150#	SOUTH CX
75.9	E	100#	NORTH JN
82.3	E	100#	NORTH CN
* REVERSAL REQUIRED *			

SEWER JUNCTION INFORMATION FROM SEWER VIDEO INSPECTION SEWER ID S-MA60001383			
DISTANCE FROM MH ID S-MH60001037			
19.2	W	100#	NORTH CN
* REVERSAL REQUIRED *			



NOTE: CHAINAGES SHOWN ARE ALONG N P. OF ROBLIN BLVD



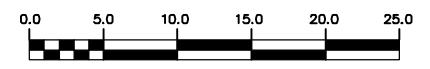
CAUTION: GAS ON N SIDE OF ROBLIN BOULEVARD

CAUTION: MTS & WM ON S SIDE OF ROBLIN BOULEVARD

FOR CONSTRUCTION NOTES SEE DRAWING 9020

FOR WATER SERVICE INFORMATION SEE DRAWING 9020

FOR SEWER SERVICE INFORMATION SEE DRAWING 9020



METRIC
WHOLE NUMBERS INDICATE MILLIMETRES
DECIMALIZED NUMBERS INDICATE METRES

WARNING
IF POWER EQUIPMENT OR EXPLOSIVES ARE TO BE USED FOR EXCAVATION ON THIS PROJECT THE CONTRACTOR MUST:
1) NOTIFY THE GAS COMPANY OF THE PROPOSED LOCATION OF EXCAVATION.
2) TAKE PRECAUTION TO AVOID DAMAGE TO GAS COMPANY INSTALLATIONS.
SEE PROVINCIAL REGULATION 210/72 FOR DETAILS

200 WM	WATERMAIN	200 WM	SL, HYDRO	150 WM	WATERMAIN	150 WM
+	HYDRANT	+	MTS	+	HYDRANT	+
o	VALVE	o	TRAFFIC SIGNALS	+	VALVE	+
525 LDS	LAND DRAINAGE SEWER	525 LDS	GAS	300 LDS	LAND DRAINAGE SEWER	300 LDS
375 WWS	WASTEWATER SEWER	375 WWS	SURVEY BAR	250 WWS	WASTEWATER SEWER	250 WWS
o	MANHOLE	o	FENCE	x	o	PROFILE
□	CATCH BASIN	□	POLE - HYDRO, MTS	—	□	GROUND ABOVE PIPE
▽	CURB INLET	▽	CURB STOP	—	?	DITCH (NORTH & WEST)
+	JUNCTIONS	+	GUY ANCHOR	—	?	DITCH (SOUTH & EAST)
—	CULVERT	—	LIGHT STANDARD	—	—	GUTTER (NORTH & WEST)
—	ANODE	—	TREE	—	—	GUTTER (SOUTH & EAST)
EXISTING	LEGEND-PLAN	PROPOSED	EXISTING	LEGEND-PLAN	PROPOSED	EXISTING
—	LEGEND-PROFILE	PROPOSED	EXISTING	LEGEND-PROFILE	PROPOSED	EXISTING

LOCATION APPROVED UNDERGROUND STRUCTURES

SUPV. U/G STRUCTURES COMMITTEE DATE

NOTE:
LOCATION OF UNDERGROUND STRUCTURES AS SHOWN ARE BASED ON THE BEST INFORMATION AVAILABLE BUT NO GUARANTEE IS GIVEN THAT ALL EXISTING UTILITIES ARE EXACT. CONFIRMATION OF EXISTENCE AND EXACT LOCATION OF ALL SERVICES MUST BE OBTAINED FROM THE INDIVIDUAL UTILITIES BEFORE PROCEEDING WITH CONSTRUCTION.

NO.	REVISIONS	DATE	BY

CITY OF WINNIPEG
WATER AND WASTE
ENGINEERING DIVISION

DESIGNED BY: AMC
CHECKED BY: SC

DRAWN BY: CJH
APPROVED BY: KZ

HOR. SCALE: 1:250
VERTICAL: 1:50

RELEASED FOR CONSTRUCTION

DATE: 2009 09 17

ENGINEER'S SEAL

ORIGINAL SIGNED BY
S.R.J.
COURNOYER
09/09/16

BID OPPORTUNITY: 669-2009
FILENAME: 9019.dwg
PLOT DATE: 2009 09 17

THE CITY OF WINNIPEG
WATER AND WASTE DEPARTMENT

2009 SEWER RENEWALS
CONTRACT 45
ROBLIN BOULEVARD
MH AT CHARLESWOOD ROAD TO
1ST MH E OF CHARLESWOOD ROAD

SHEET 22 OF 23
CITY DRAWING NUMBER
9019