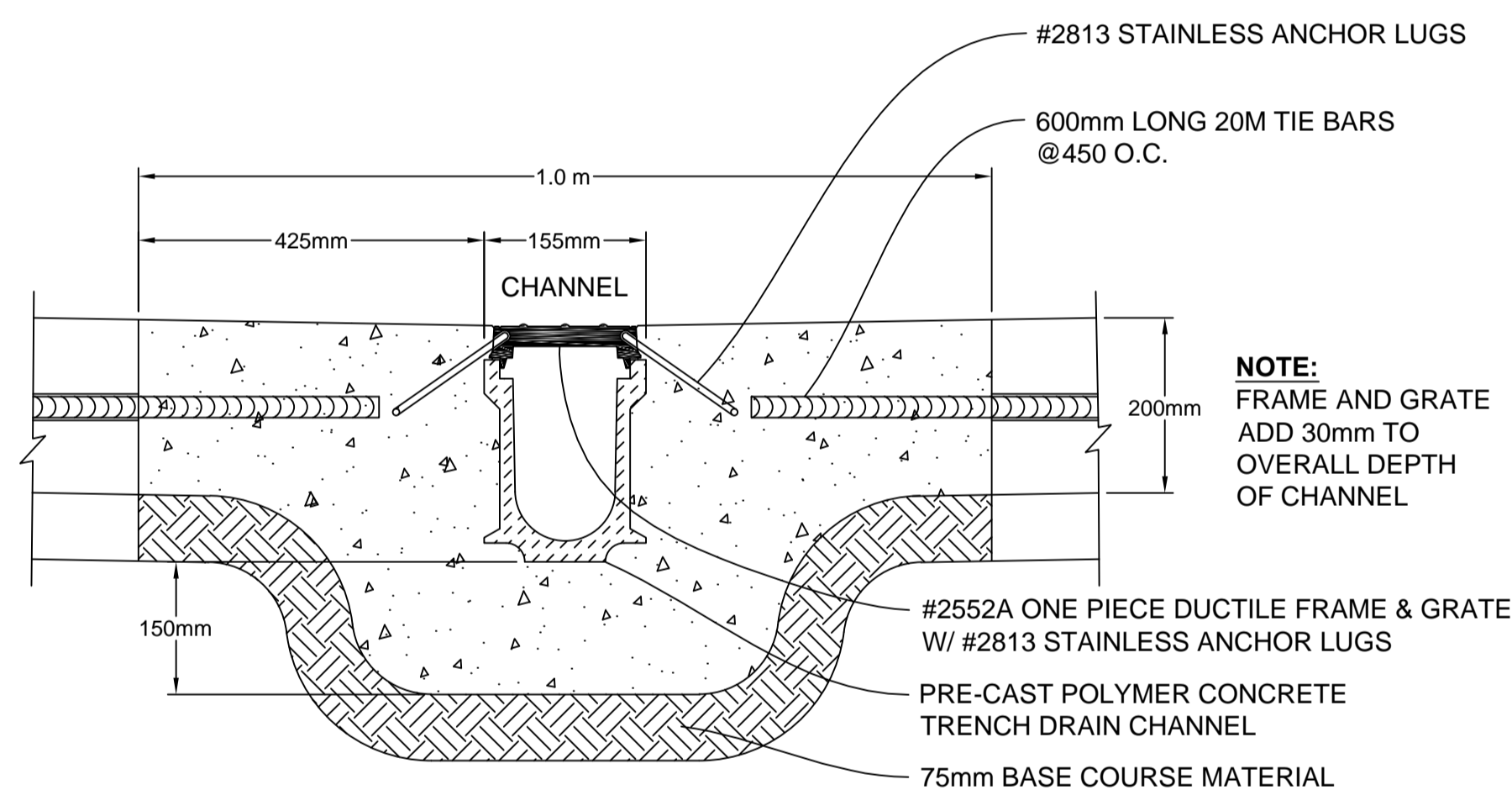
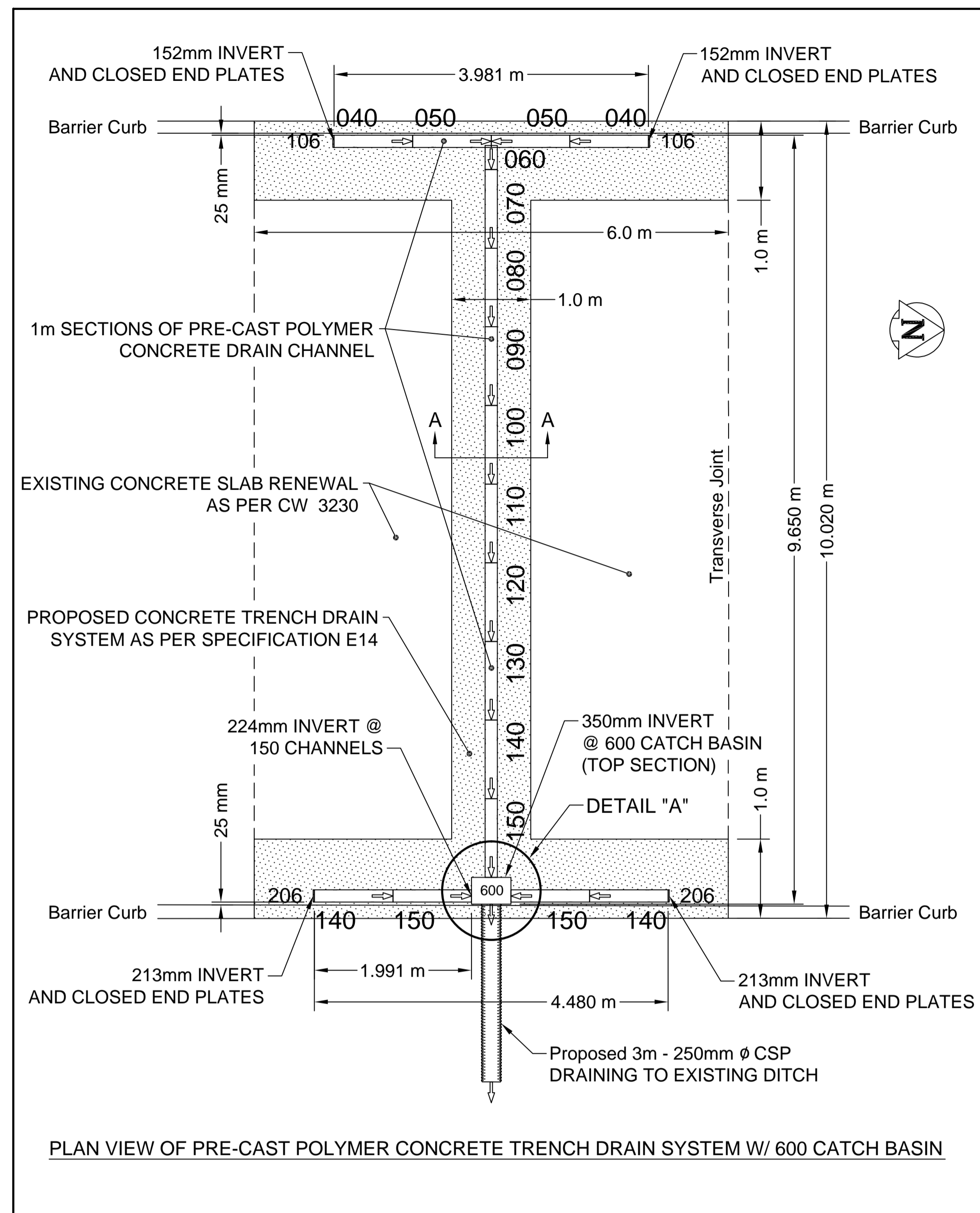


**2552A ONE PIECE DUCTILE FRAME & GRATE  
W/ 2813 STAINLESS ANCHOR LUGS**

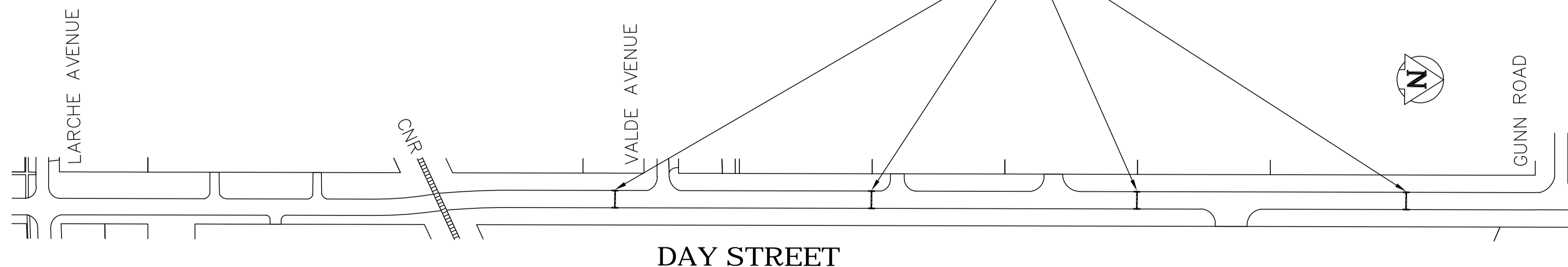


**PRE-CAST POYLMER CONCRETE TRENCH DRAIN SYSTEM  
CROSS-SECTION A - A**



**PLAN VIEW OF PRE-CAST POLYMER CONCRETE TRENCH DRAIN SYSTEM W/ 600 CATCH BASIN**

**NOTE:** PRE-CAST POLYMER CONCRETE TRENCH DRAIN SYSTEM TO BE INSTALLED AT FOUR(4) LOCATIONS ALONG DAY STREET BETWEEN LARCHE AVENUE AND GUNN ROAD. LOCATIONS ARE INDICATED ON DRAWING BELOW. PRE-CAST POLYMER CONCRETE DRAIN SYSTEM WILL BE SUPPLIED BY THE CITY OF WINNIPEG.



**DAY STREET**

METRIC  
WHOLE NUMBERS INDICATE MILLIMETRES  
DECIMALIZED NUMBERS INDICATE METRES

BID OPPORTUNITY NO. 67-2009

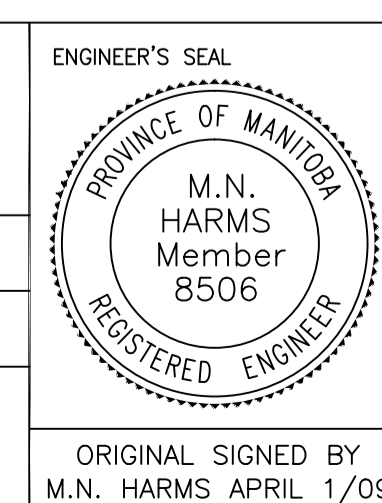
LIST OF COMPONENTS FOR A PRE-CAST POLYMER CONCRETE TRENCH DRAIN SYSTEM		
QUANTITY	COMPONENT #	COMPONENT DESCRIPTION
1	600	600 Large Catch Basin(Top Section) W/ #603 Cast Iron Frame & #604 Cast Iron Grate
2	040	1m Section Pre-cast Polymer Concrete Trench Drain Channel
2	050	1m Section Pre-cast Polymer Concrete Trench Drain Channel
1	060	1m Section Pre-cast Polymer Concrete Trench Drain Channel
1	070	1m Section Pre-cast Polymer Concrete Trench Drain Channel
1	080	1m Section Pre-cast Polymer Concrete Trench Drain Channel
1	090	1m Section Pre-cast Polymer Concrete Trench Drain Channel
1	100	1m Section Pre-cast Polymer Concrete Trench Drain Channel
1	110	1m Section Pre-cast Polymer Concrete Trench Drain Channel
1	120	1m Section Pre-cast Polymer Concrete Trench Drain Channel
1	130	1m Section Pre-cast Polymer Concrete Trench Drain Channel
3	140	1m Section Pre-cast Polymer Concrete Trench Drain Channel
3	150	1m Section Pre-cast Polymer Concrete Trench Drain Channel
2	106	Closed End Plates
2	206	Closed End Plates
35	2552A	One Piece Ductile Frame & Grate
144	809	Installation Kit for Suspending Channels and Grates
8	2552EP	Fab. End Plate for 1 Piece Interceptor
1	POLYSEAL 1	Single-Part Flexible Polyurethane Sealant(Standard Size Caulking Tube)
1	CULVERT	3m - 250mm diameter, 16 gauge Corrugated Steel Pipe

090	COMPONENT #	LOCATION APPROVED	B.M. ELEV.
→	DRAINAGE DIRECTION	UNDERGROUND STRUCTURES	
■	CONCRETE		
▨	CONCRETE TRENCH DRAIN		

LEGEND

NO.	REVISIONS	DATE	BY

ENGINEERING DIVISION TECHNOLOGY SERVICES BRANCH 106 - 1155 PACIFIC AVE			
DESIGNED BY	A.P.	CHECKED BY	B.K.
DRAWN BY	A.P.	APPROVED BY	M.H.
SCALE:	NOT TO SCALE		
DATE:	2009/02/06		



**THE CITY OF WINNIPEG**  
PUBLIC WORKS DEPARTMENT

**DAY STREET**  
FROM LARCHE AVENUE TO GUNN ROAD  
REHABILITATION AND ASSOCIATED WORKS  
PRE-CAST POLYMER CONCRETE TRENCH DRAIN SYSTEM  
DETAILS

CITY DRAWING NUMBER SE-09-30  
SHEET 1 OF 1

8