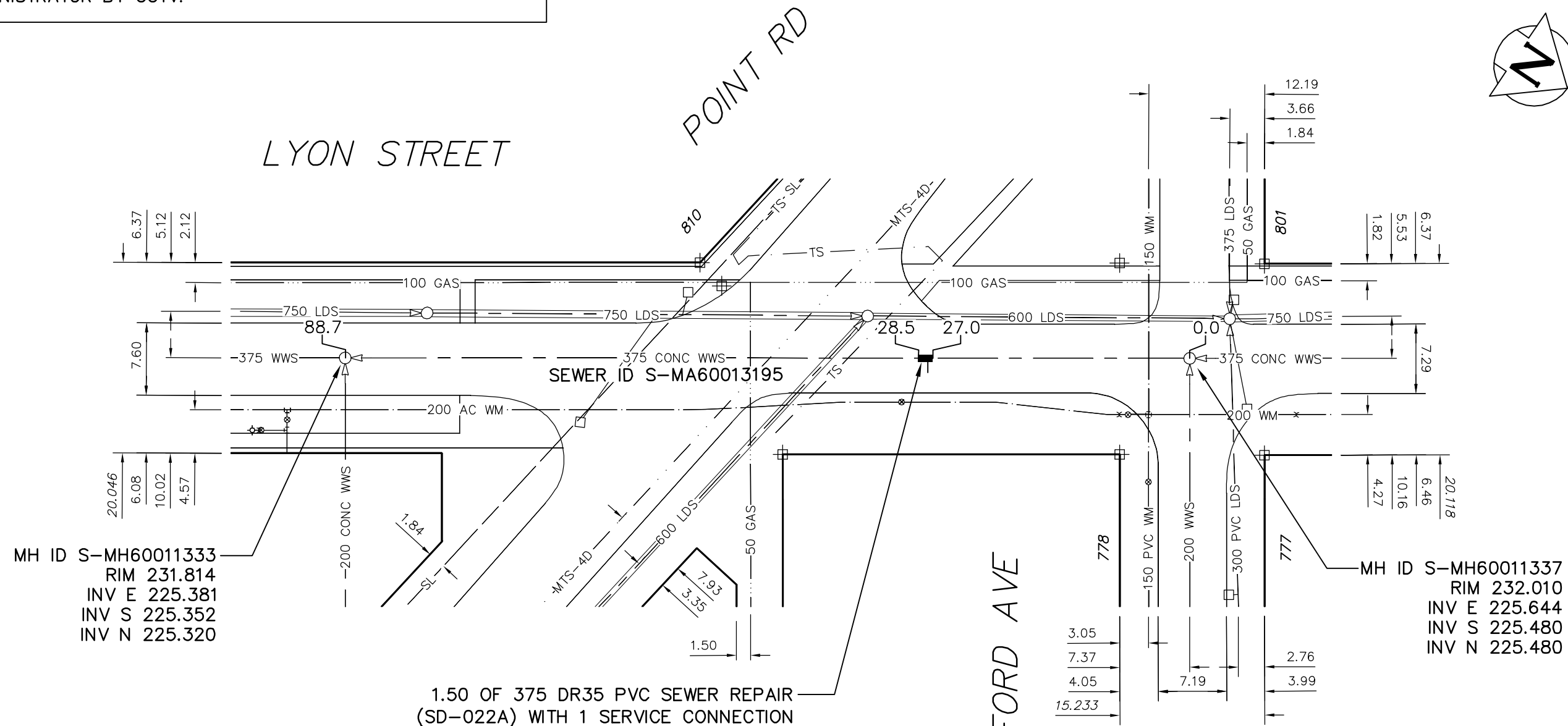
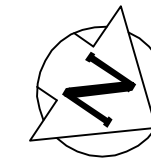


NOTES:

1. BACKFILL UNDER PAVEMENT, IN SIDEWALKS, & WITHIN 1.0 m OF PAVEMENT TO BE CLASS 3.
2. CONFIRM LIMITS OF REPAIR IN PRESENCE OF THE CONTRACT ADMINISTRATOR BY CCTV.



MH ID S-MH60011333
RIM 231.814
INV E 225.381
INV S 225.352
INV N 225.320

MH ID S-MH60011337
RIM 232.010
INV E 225.644
INV S 225.480
INV N 225.480

1.50 OF 375 DR35 PVC SEWER REPAIR
(SD-022A) WITH 1 SERVICE CONNECTION

SEWER JUNCTION INFORMATION FROM SEWER VIDEO INSPECTION SEWER ID S-MA60013195			
DISTANCE FROM MH ID S-MH60011337			
27.4	S	100ø	CNI

ENGINEER'S SEAL

**ORIGINAL
SIGNED BY
S.R.J.
COURNOYER
09/10/22**

BID OPPORTUNITY: 703-2009
FILENAME : 9069.dwg
PLOT DATE : 2009 10 26

LEGEND:

52.0 | MEASUREMENT TO REPAIR FROM REFERENCE MH SHOWN THUS...

METRIC

WHOLE NUMBERS INDICATE MILLIMETRES
DECIMALIZED NUMBERS INDICATE METRES

B.M. ELEV.	FIELD BOOK #:	CITY OF WINNIPEG WATER AND WASTE ENGINEERING DIVISION		 THE CITY OF WINNIPEG WATER AND WASTE DEPARTMENT	2009 SEWER RENEWALS AND REPAIRS CONTRACT 24 LYON STREET 1ST MH S OF POINT ROAD TO MH AT WATERFORD AVENUE	SHEET 2 OF 18 CITY DRAWING NUMBER 9069
POSTED TO LIS		DESIGNED BY: AMC	CHECKED BY: SC			
		DRAWN BY: CJH	APPROVED BY: KZ			
		HOR. SCALE: 1:500	RELEASED FOR CONSTRUCTION			
		VERTICAL				
NO.	REVISIONS	DATE	BY	DATE	2009 10 20	