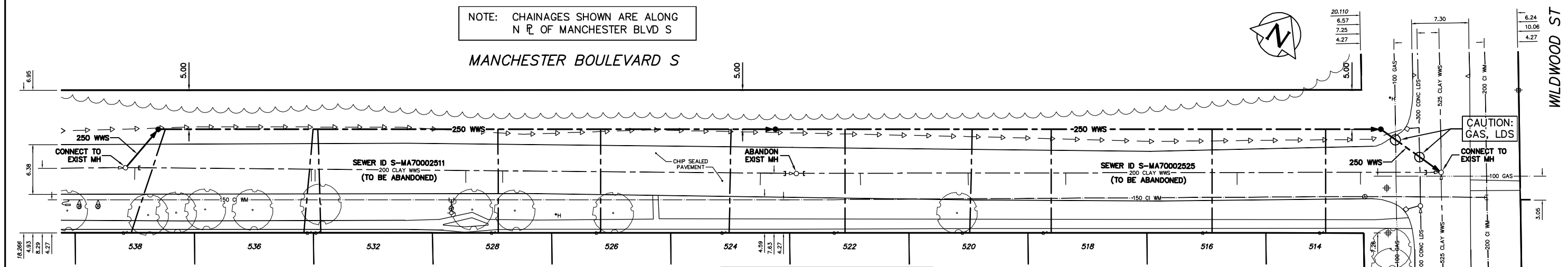


NOTE: CHAINAGES SHOWN ARE ALONG N R. OF MANCHESTER BLVD S

MANCHESTER BOULEVARD S



- CONSTRUCTION NOTES:**
1. ALL PIPE SHALL HAVE CLASS B - TYPE 2 BEDDING
 2. INSTALL SEWER BY TRENCHLESS METHODS.
 3. CONFIRM THE LOCATION OF ALL SEWER SERVICES.
 4. BACKFILL UNDER PAVEMENT, IN SIDEWALKS, & WITHIN 1.0 OF PAVEMENT TO BE CLASS 3.
 5. BACKFILL IN BOULEVARD TO BE CLASS 5.
 6. RENEW SEWER SERVICES TO R.
 7. INSTALL SEWER SERVICE RISERS TO ELEVATION WHERE MINIMUM SLOPE OF 1% IS MAINTAINED FOR ALL SERVICES.

WATER SERVICE INFORMATION

ADDRESS	SIZE(mm) & TYPE (STREET)	SIZE(mm) & TYPE (PROP)	SHORT & LONG MEASUREMENT	CORP. LOCATION
514 MANCHESTER BV RESIDENTIAL	-	-	5.64 WML WILDWOOD	-
516 MANCHESTER BV RESIDENTIAL	-	-	20.62 WML WILDWOOD	-
518 MANCHESTER BV RESIDENTIAL	20	20	41.89 WML WILDWOOD	0.1 W OF S/C
520 MANCHESTER BV RESIDENTIAL	COPPER LEAD	20	-	0.3 W OF S/C
522 MANCHESTER BV RESIDENTIAL	COPPER LEAD	20	51.31 WML WILDWOOD	0.1 W OF S/C
524 MANCHESTER BV RESIDENTIAL	-	-	67.63 WML WILDWOOD	OPP S/C
526 MANCHESTER BV RESIDENTIAL	20	20	82.07 WML WILDWOOD	OPP S/C
528 MANCHESTER BV RESIDENTIAL	-	-	98.25 WML WILDWOOD	0.1 W OF S/C
532 MANCHESTER BV RESIDENTIAL	-	-	111.67 WML WILDWOOD	0.2 E OF S/C
536 MANCHESTER BV RESIDENTIAL	20	20	134.12 WML WILDWOOD	0.6 E OF S/C
538 MANCHESTER BV RESIDENTIAL	16	16	135.06 WML WILDWOOD	0.6 E OF S/C
538 MANCHESTER BV RESIDENTIAL	LEAD	-	-	-
538 MANCHESTER BV RESIDENTIAL	-	-	158.75 WML WILDWOOD	-

SEWER SERVICE INFORMATION

ADDRESS	SIZE	± DIST JUNCTION TIE
514 MANCHESTER BV RESIDENTIAL	-	-
516 MANCHESTER BV RESIDENTIAL	-	-
518 MANCHESTER BV RESIDENTIAL	-	-
520 MANCHESTER BV RESIDENTIAL	-	-
522 MANCHESTER BV RESIDENTIAL	-	-
524 MANCHESTER BV RESIDENTIAL	-	-
526 MANCHESTER BV RESIDENTIAL	-	-
528 MANCHESTER BV RESIDENTIAL	-	-
532 MANCHESTER BV RESIDENTIAL	-	-
536 MANCHESTER BV RESIDENTIAL	-	-
538 MANCHESTER BV RESIDENTIAL	-	-

NOTE: SEWER SERVICE JUNCTION & PROPERTY LINE MEASUREMENTS FROM GIS. MEASUREMENTS WERE MEASURED IN AUTOCAD.

SEWER JUNCTION INFORMATION FROM SEWER VIDEO INSPECTION SEWER ID S-MA70002511

DISTANCE FROM MH ID S-MH7001003	DIR	SIZE	DEPTH	STATUS
1.2	E	150#	SOUTH	CNI
23.8	E	150#	SOUTH	CNI
* REVERSAL REQUIRED *				

SEWER JUNCTION INFORMATION FROM SEWER VIDEO INSPECTION SEWER ID S-MA70002511

DISTANCE FROM MH ID S-MH7001004	DIR	SIZE	DEPTH	STATUS
4.8	W	150#	SOUTH	CNI
25.0	W	150#	SOUTH	CNI
37.8	W	150#	SOUTH	CNI
42.3	W	150#	SOUTH	CNI
61.6	W	150#	SOUTH	CNI
* REVERSAL REQUIRED *				

SEWER JUNCTION INFORMATION FROM SEWER VIDEO INSPECTION SEWER ID S-MA70002525

DISTANCE FROM MH ID S-MH7001004	DIR	SIZE	DEPTH	STATUS
8.2	E	150#	SOUTH	CNI
22.0	E	150#	SOUTH	CNI
34.5	E	150#	SOUTH	CNI
56.4	E	150#	SOUTH	CNI
72.2	E	150#	SOUTH	CNI

WARNING

IF POWER EQUIPMENT OR EXPLOSIVES ARE TO BE USED FOR EXCAVATION ON THIS PROJECT THE CONTRACTOR MUST:

- 1) NOTIFY THE GAS COMPANY OF THE PROPOSED LOCATION OF EXCAVATION.
- 2) TAKE PRECAUTION TO AVOID DAMAGE TO GAS COMPANY INSTALLATIONS.

SEE PROVINCIAL REGULATION 210/72 FOR DETAILS

METRIC
WHOLE NUMBERS INDICATE MILLIMETRES
DECIMALIZED NUMBERS INDICATE METRES

200 WM	WATERMAIN	200 WM	SL, HYDRO	150 WM	WATERMAIN	150 WM
+	HYDRANT	+	MTS	+	HYDRANT	+
o	VALVE	o	TRAFFIC SIGNALS	o	VALVE	o
525 LDS	LAND DRAINAGE SEWER	525 LDS	GAS	50 GAS	300 LDS	LAND DRAINAGE SEWER
375 WWS	WASTEWATER SEWER	375 WWS	SURVEY BAR	250 WWS	250 WWS	WASTEWATER SEWER
o	MANHOLE	o	FENCE	o	PROFILE	o
□	CATCH BASIN	□	POLE - HYDRO, MTS	□	GROUND ABOVE PIPE	□
▽	CURB INLET	▽	CURB STOP	▽	☉ DITCH (NORTH & WEST)	▽
+	JUNCTIONS	+	GUY ANCHOR	+	☉ DITCH (SOUTH & EAST)	+
—	CULVERT	—	LIGHT STANDARD	—	☉ GUTTER (NORTH & WEST)	—
⊕	ANODE	⊕	TREE	⊕	☉ GUTTER (SOUTH & EAST)	⊕
EXISTING	LEGEND-PLAN	PROPOSED	EXISTING	LEGEND-PLAN	PROPOSED	EXISTING
EXISTING	LEGEND-PROFILE	PROPOSED	EXISTING	LEGEND-PROFILE	PROPOSED	EXISTING

LOCATION APPROVED UNDERGROUND STRUCTURES

SUPV. U/G STRUCTURES COMMITTEE	DATE

NOTE: LOCATION OF UNDERGROUND STRUCTURES AS SHOWN ARE BASED ON THE BEST INFORMATION AVAILABLE BUT NO GUARANTEE IS GIVEN THAT ALL EXISTING UTILITIES ARE SHOWN OR THAT THE GIVEN LOCATIONS ARE EXACT. CONFIRMATION OF EXISTENCE AND EXACT LOCATION OF ALL SERVICES MUST BE OBTAINED FROM THE INDIVIDUAL UTILITIES BEFORE PROCEEDING WITH CONSTRUCTION.

CITY OF WINNIPEG WATER AND WASTE ENGINEERING DIVISION

DESIGNED BY: AMC
CHECKED BY: SC

DRAWN BY: CJH
APPROVED BY: KZ

HOR. SCALE: 1:250
VERTICAL: 1:50

DATE: 2009 10 26

ENGINEER'S SEAL

ORIGINAL SIGNED BY
S.R.J. COURNOYER
09/10/22

BID OPPORTUNITY: 703-2009
FILENAME: 9082.dwg
PLOT DATE: 2009 10 26

THE CITY OF WINNIPEG WATER AND WASTE DEPARTMENT

2009 SEWER RENEWALS AND REPAIRS CONTRACT 24

MANCHESTER BOULEVARD S
2ND MH W OF WILDWOOD STREET TO MH AT WILDWOOD STREET

SHEET 13 OF 18
CITY DRAWING NUMBER
9082