

WATER SERVICE INFORMATION

ADDRESS	SIZE(mm) & TYPE (STREET)	SIZE(mm) & TYPE (PROP)	SHORT & LONG MEASUREMENT	CORP. LOCATION
761 WATERFORD AVE RESIDENTIAL	20 COPPER	-	70.37 EEL LYON	0.5 W OF S/C
762 WATERFORD AVE RESIDENTIAL	20 COPPER	-	72.62 EEL LYON	0.3 E OF S/C
765 WATERFORD AVE RESIDENTIAL	20 COPPER	-	57.20 EEL LYON	1.6 W OF S/C
766 WATERFORD AVE RESIDENTIAL	20 COPPER	-	57.06 EEL LYON	0.7 W OF S/C
768 WATERFORD AVE RESIDENTIAL	20 COPPER	-	40.54 EEL LYON	2.7 W OF S/C
770 WATERFORD AVE RESIDENTIAL	20 COPPER	-	39.84 EEL LYON	1.0 W OF S/C
773 WATERFORD AVE RESIDENTIAL	20 COPPER	-	26.83 EEL LYON	1.2 W OF S/C
774 WATERFORD AVE RESIDENTIAL	20 COPPER	-	24.84 EEL LYON	0.4 W OF S/C
777 WATERFORD AVE RESIDENTIAL	20 COPPER	-	15.14 EEL LYON	1.0 W OF S/C
778 WATERFORD AVE RESIDENTIAL	20 COPPER	-	6.23 EEL LYON	0.8 W OF S/C

SEWER SERVICE INFORMATION

ADDRESS	SIZE	DIST	JUNCTION TIE
761 WATERFORD AVE RESIDENTIAL	-	-	-
762 WATERFORD AVE RESIDENTIAL	-	-	-
765 WATERFORD AVE RESIDENTIAL	-	-	-
766 WATERFORD AVE RESIDENTIAL	-	-	-
769 WATERFORD AVE RESIDENTIAL	-	-	-
770 WATERFORD AVE RESIDENTIAL	-	-	-
773 WATERFORD AVE RESIDENTIAL	-	-	-
774 WATERFORD AVE RESIDENTIAL	-	-	-
777 WATERFORD AVE RESIDENTIAL	-	-	-
778 WATERFORD AVE RESIDENTIAL	-	-	-

NOTE: SEWER SERVICE JUNCTION & PROPERTY LINE MEASUREMENTS FROM GIS. MEASUREMENTS WERE MEASURED IN AUTOCAD.

CONSTRUCTION NOTES:

1. ALL PIPE SHALL HAVE CLASS B - TYPE 2 BEDDING
2. INSTALL SEWER BY TRENCHLESS METHODS.
3. CONFIRM THE LOCATION OF ALL SEWER SERVICES.
4. BACKFILL UNDER PAVEMENT, IN SIDEWALKS, & WITHIN 1.0 OF PAVEMENT TO BE CLASS 3.
5. BACKFILL IN BOULEVARD TO BE CLASS 5.
6. RENEW SEWER SERVICES TO R.
7. INSTALL SEWER SERVICE RISERS TO ELEVATION WHERE MINIMUM SLOPE OF 1% IS MAINTAINED FOR ALL SERVICES.

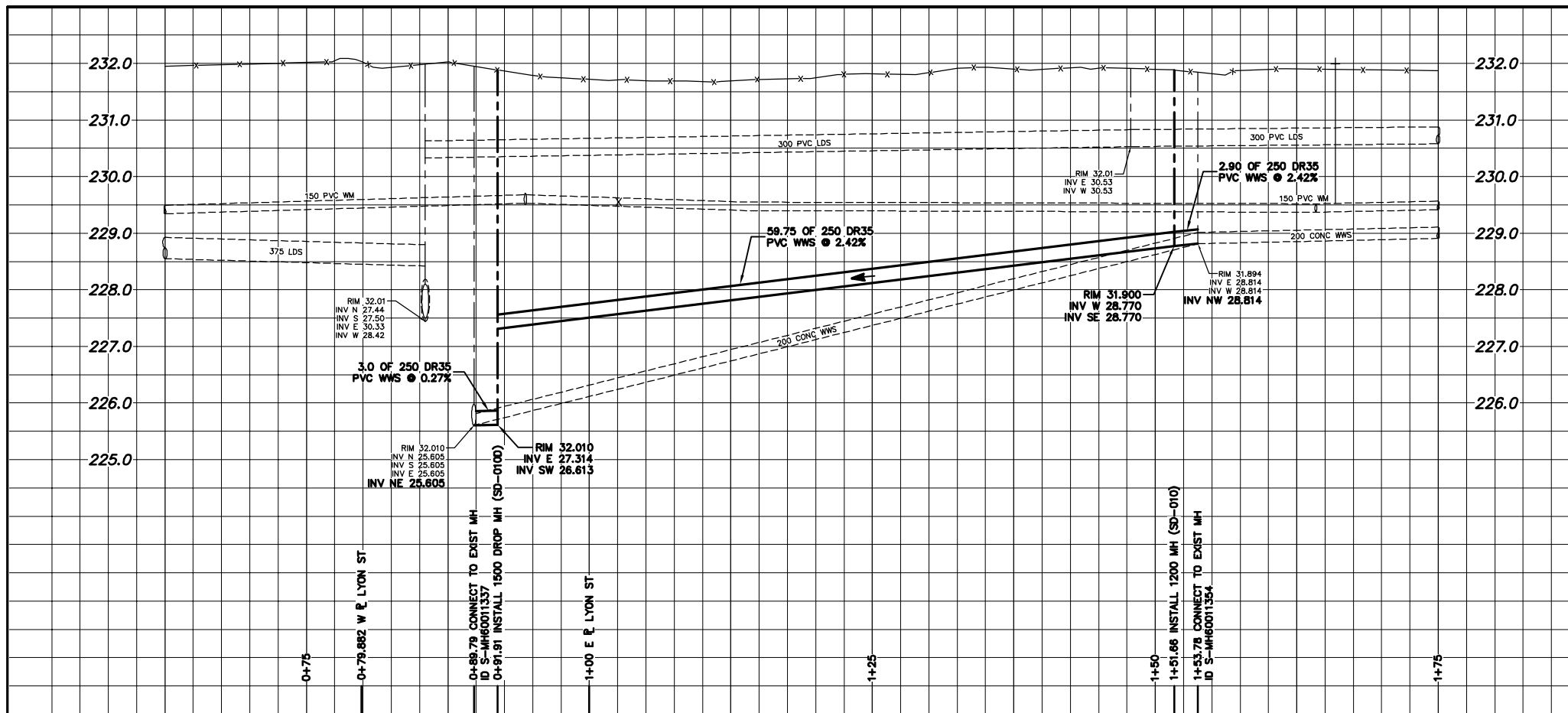
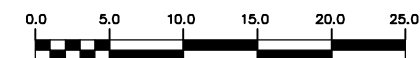
SEWER JUNCTION INFORMATION FROM SEWER VIDEO INSPECTION SEWER ID S-MA60013198

DISTANCE FROM MH ID S-MH60011354			
13.8	W	100#	N
15.4	W	100#	S
28.2	W	100#	N
31.4	W	100#	S
41.5	W	100#	N

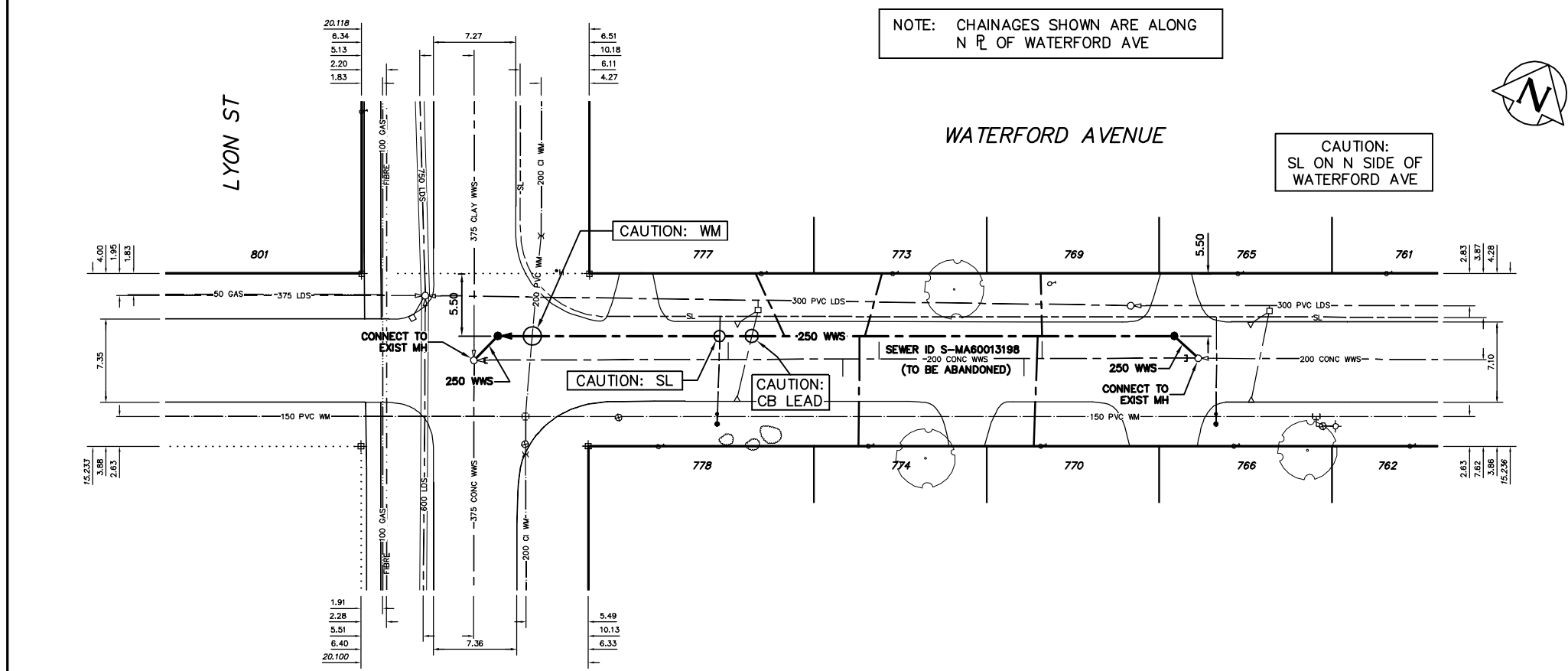
METRIC
WHOLE NUMBERS INDICATE MILLIMETRES
DECIMALIZED NUMBERS INDICATE METRES

WARNING

IF POWER EQUIPMENT OR EXPLOSIVES ARE TO BE USED FOR EXCAVATION ON THIS PROJECT THE CONTRACTOR MUST:
1) NOTIFY THE GAS COMPANY OF THE PROPOSED LOCATION OF EXCAVATION.
2) TAKE PRECAUTION TO AVOID DAMAGE TO GAS COMPANY INSTALLATIONS.
SEE PROVINCIAL REGULATION 210/72 FOR DETAILS



NOTE: CHAINAGES SHOWN ARE ALONG N R OF WATERFORD AVE



200 WM	WATERMAIN	200 WM	SL, HYDRO	150 WM	WATERMAIN	150 WM
+	HYDRANT	+	MTS	+	HYDRANT	+
o	VALVE	o	TRAFFIC SIGNALS	o	VALVE	o
525 LDS	LAND DRAINAGE SEWER	525 LDS	GAS	50 GAS	300 LDS	LAND DRAINAGE SEWER
375 WWS	WASTEWATER SEWER	375 WWS	SURVEY BAR	250 WWS	WASTEWATER SEWER	250 WWS
o	MANHOLE	o	FENCE	x	o	PROFILE
□	CATCH BASIN	□	POLE - HYDRO, MTS	□	o	GROUND ABOVE PIPE
∇	CURB INLET	∇	CURB STOP	∇	o	DITCH (NORTH & WEST)
+	JUNCTIONS	+	GUY ANCHOR	+	o	DITCH (SOUTH & EAST)
—	CULVERT	—	LIGHT STANDARD	—	o	GUTTER (NORTH & WEST)
o	ANODE	o	TREE	o	o	GUTTER (SOUTH & EAST)
EXISTING	LEGEND-PLAN	PROPOSED	EXISTING	LEGEND-PLAN	PROPOSED	EXISTING
EXISTING	LEGEND-PROFILE	PROPOSED	EXISTING	LEGEND-PROFILE	PROPOSED	EXISTING

LOCATION APPROVED UNDERGROUND STRUCTURES

SUPV. U/G STRUCTURES COMMITTEE DATE

NOTE: LOCATION OF UNDERGROUND STRUCTURES AS SHOWN ARE BASED ON THE BEST INFORMATION AVAILABLE BUT NO GUARANTEE IS GIVEN THAT ALL EXISTING UTILITIES ARE SHOWN OR THAT THE GIVEN LOCATIONS ARE EXACT. CONFIRMATION OF EXISTENCE AND EXACT LOCATION OF ALL SERVICES MUST BE OBTAINED FROM THE INDIVIDUAL UTILITIES BEFORE PROCEEDING WITH CONSTRUCTION.

B.M. ELEV. FIELD BOOK #:

POSTED TO LIS:

DESIGNED BY: AMC CHECKED BY: SC

DRAWN BY: CJH APPROVED BY: KZ

HOR. SCALE: 1:250

VERTICAL: 1:50

RELEASED FOR CONSTRUCTION

NO. REVISIONS DATE BY DATE

DATE: 2009 10 20

CITY OF WINNIPEG
WATER AND WASTE
ENGINEERING DIVISION

ENGINEER'S SEAL

ORIGINAL SIGNED BY
S.R.J. COURNOYER
09/10/22

2009 SEWER RENEWALS AND REPAIRS
CONTRACT 24
WATERFORD AVENUE
1ST MH E OF LYON STREET TO
MH AT LYON STREET

BID OPPORTUNITY: 703-2009
FILENAME: 9084.dwg
PLOT DATE: 2009 10 26

THE CITY OF WINNIPEG
WATER AND WASTE DEPARTMENT

2009 SEWER RENEWALS AND REPAIRS
CONTRACT 24
WATERFORD AVENUE
1ST MH E OF LYON STREET TO
MH AT LYON STREET

SHEET 17 OF 18
CITY DRAWING NUMBER
9084