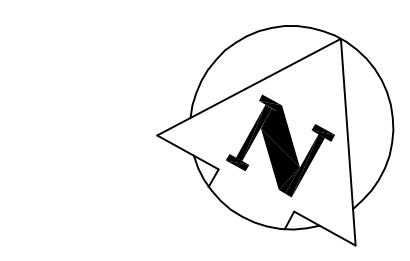


- NOTES:**
- CONTRACTOR TO EXPOSE EXISTING OUTFALL PIPE AT CHAMBER 2 AND 3 TO LOCATE THE CLOSEST JOINT ON THE UPSTREAM SIDE. CHAMBER 2 AND 3 TO BE POSITIONED SUCH THAT THE EASTERLY WALL IS AT THE JOINT.
 - CONTRACT ADMINISTRATOR WILL CONFIRM INVERT ELEVATION AT THIS JOINT PRIOR TO THE START OF ANY PIPE OR CHAMBER INSTALLATION.



MATCH LINE 14+00 FOR CONTINUATION SEE DWG. 003

WARNING

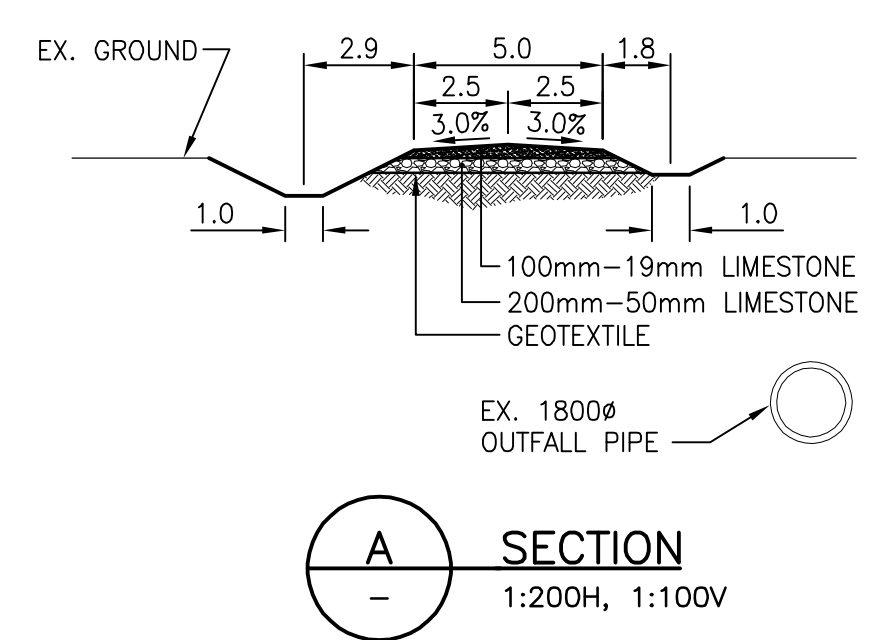
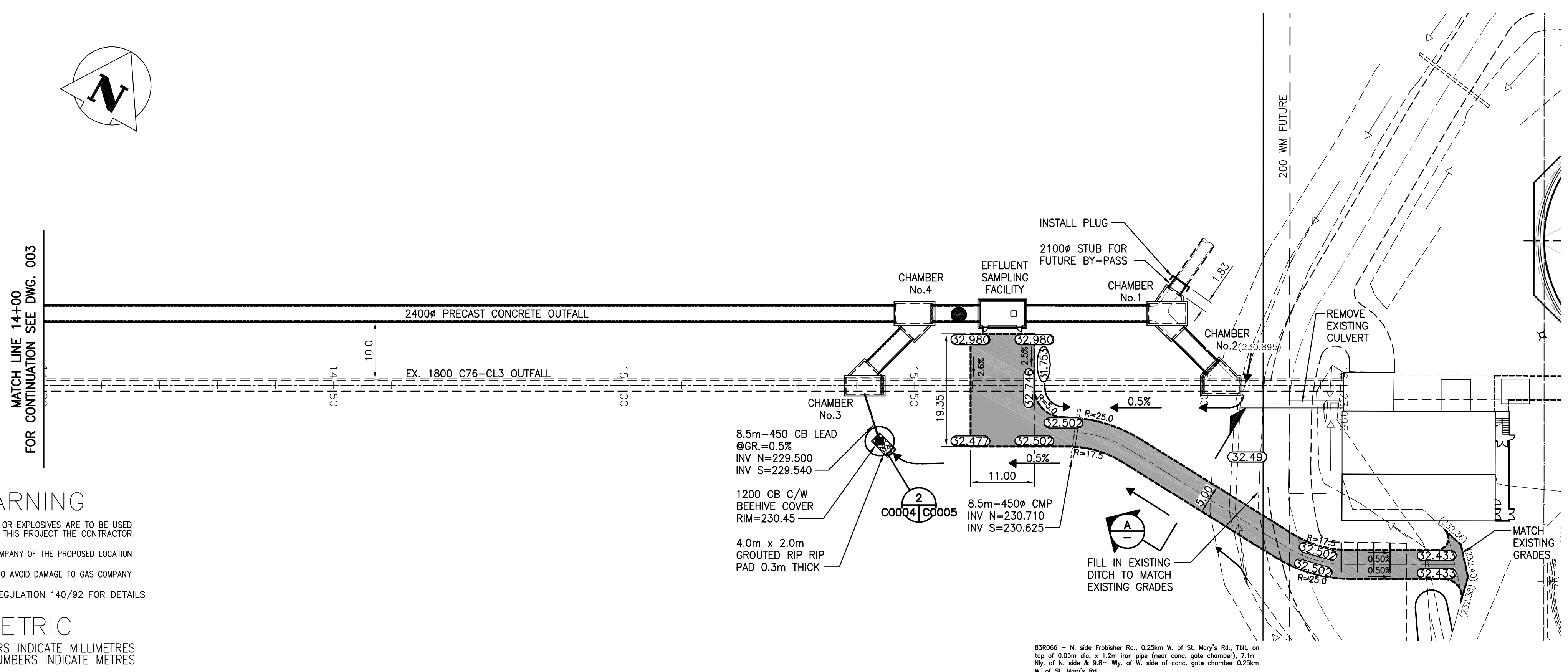
IF POWER EQUIPMENT OR EXPLOSIVES ARE TO BE USED FOR EXCAVATION ON THIS PROJECT THE CONTRACTOR MUST:

- NOTIFY THE GAS COMPANY OF THE PROPOSED LOCATION OF EXCAVATION.
- TAKE PRECAUTION TO AVOID DAMAGE TO GAS COMPANY INSTALLATIONS.

SEE PROVINCIAL REGULATION 140/92 FOR DETAILS

METRIC

WHOLE NUMBERS INDICATE MILLIMETRES
DECIMALIZED NUMBERS INDICATE METRES



A SECTION
1:200H, 1:100V



U:\1110865\584_Drawing\Sheet_Files\02_civil\080506-201.dwg
2009-10-13 09:25:08 By: bmoore

150_WW	WATERMAIN	150_WW	EXISTING	LEGEND-PLAN	PROPOSED	EXISTING	LEGEND-PLAN	PROPOSED
⊕	HYDRANT	⊕						
⊙	VALVE	⊙						
300_LDS	LAND DRAINAGE SEWER	300_LDS						
250_WWS	WASTE WATER SEWER	250_WWS						
○	MANHOLE	●						
□	CATCH BASIN	■						
▽	CURB INLET	▽						
+	JUNCTIONS	+			31.334			
▬▬▬	CULVERT	▬▬▬						
▬▬▬	GAS	▬▬▬						
---	EXISTING	---	EXISTING	LEGEND-PLAN	PROPOSED	EXISTING	LEGEND-PROFILE	PROPOSED

LOCATION APPROVED UNDERGROUND STRUCTURES		B.M.	81-007
		ELEV.	230.438
SUPV. U/G STRUCTURES COMMITTEE	DATE		
NOTE:	LOCATION OF UNDERGROUND STRUCTURES AS SHOWN ARE BASED ON THE BEST INFORMATION AVAILABLE BUT NO GUARANTEE IS GIVEN THAT ALL EXISTING UTILITIES ARE SHOWN OR THAT THE GIVEN LOCATIONS ARE EXACT. CONFIRMATION OF EXISTENCE AND EXACT LOCATION OF ALL SERVICES MUST BE OBTAINED FROM THE INDIVIDUAL UTILITIES BEFORE PROCEEDING WITH CONSTRUCTION.		
A	ISSUED FOR TENDER	09.10.13	
NO.	REVISIONS	DATE	BY
		09.09.21	

Stantec Consulting Ltd.

905 Waverley Street, Winnipeg, Manitoba
Tel 204-489-5900 Fax 204-453-9012

DESIGNED BY: H.A.K. CHECKED BY: H.A.K.
DRAWN BY: K.R. APPROVED BY: E.W.

HOR. SCALE: 1:500
VERTICAL: 1:50

RELEASED FOR CONSTRUCTION: _____

DATE: 09.09.21

ENGINEER'S SEAL	
ORIGINAL SEALED BY:	H.A. KATZ, P. ENG. 09/10/13
BID OPPORTUNITY NO.	709-2009

THE CITY OF WINNIPEG
WATER AND WASTE DEPARTMENT

SOUTH END WATER POLLUTION CONTROL CENTRE
EFFLUENT SAMPLING FACILITY AND ASSOCIATED WORKS
2400 OUTFALL PIPE
STA. 14+00 TO STA. 16+75

CITY DRAWING NUMBER: 1-0102A-C004-001
SHEET 1 OF 1