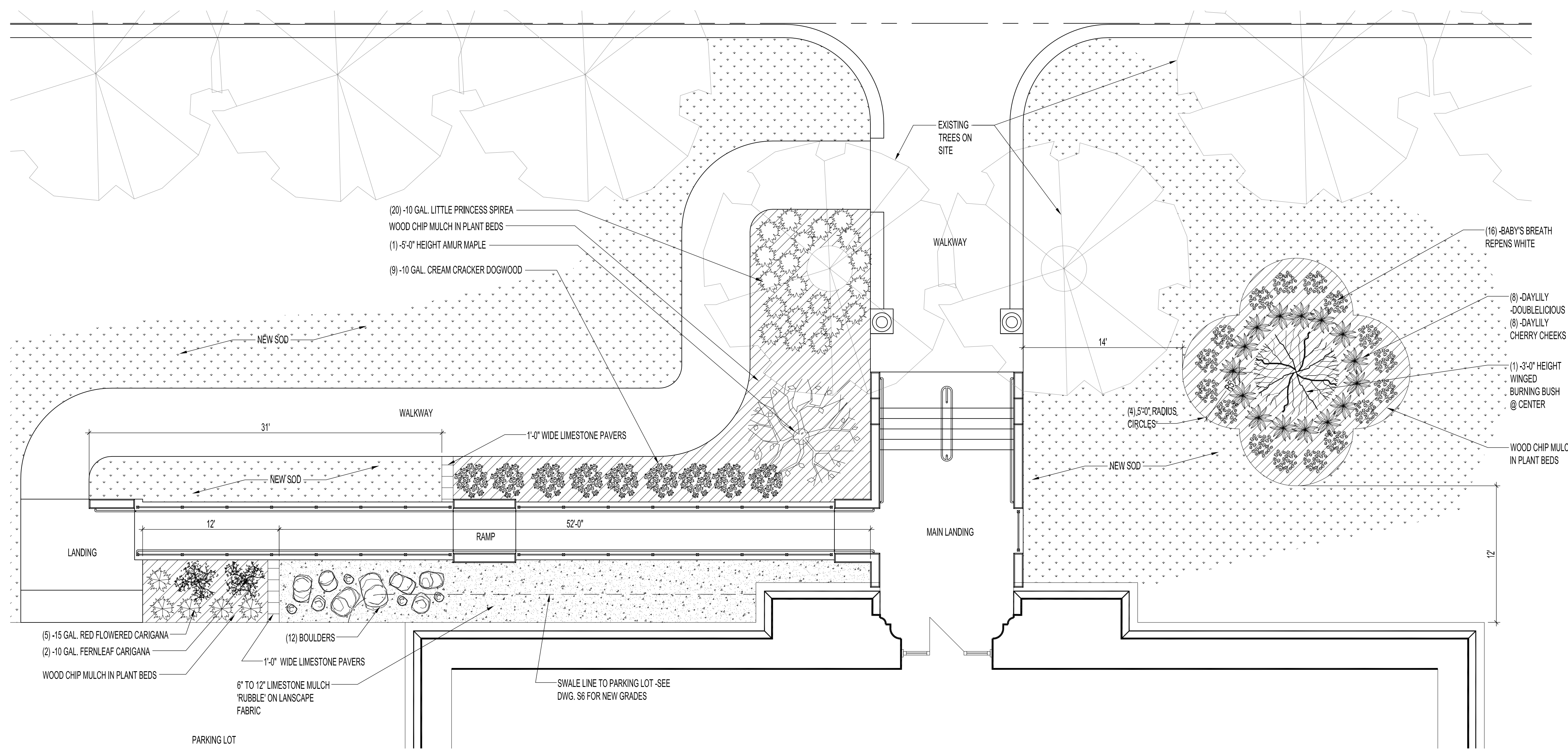


FILE NAME: 20080810.dwg | DATE: 2008.08.25 | DESCRIPTION: PARTIAL SITE PLAN - LANDSCAPING | PROJECT NO: 2008-080 | ADDRESS: 380 WILLIAM AVENUE



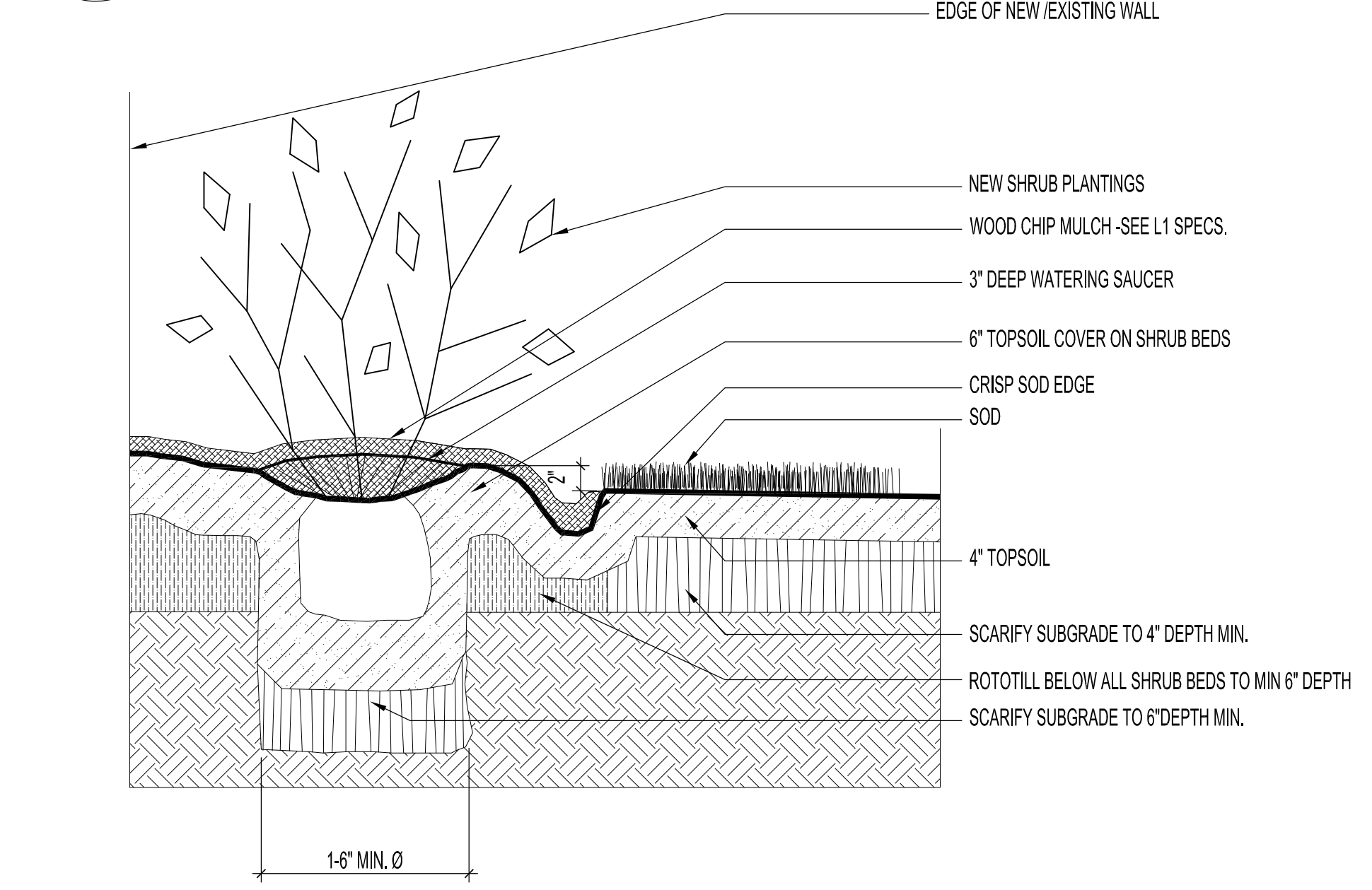
NOTES :
 -SEE DWG. L1 FOR ALL LANDSCAPE FINISHES & SPECIFICATIONS.
 -SEE STRUCTURAL DWG. S6 FOR NEW GRADES & NOTES

LEGEND

- NEW SOD - TYPICAL FOR ENTIRE SITE INCLUDING PERIMETER WHERE NEW FENCE WAS INSTALLED - SEE STRUCTURAL DWG. S6
- WOOD CHIP MULCH IN PLANTING BEDS
- LIMESTONE MULCH
- EXISTING TREES ON SITE TO REMAIN
- BOULDERS AS NOTED ON LANDSCAPE PLAN
- TREES AND BUSHES AS NOTED ON LANDSCAPE PLAN
- BEDDING PLANTS AS NOTED ON LANDSCAPE PLAN

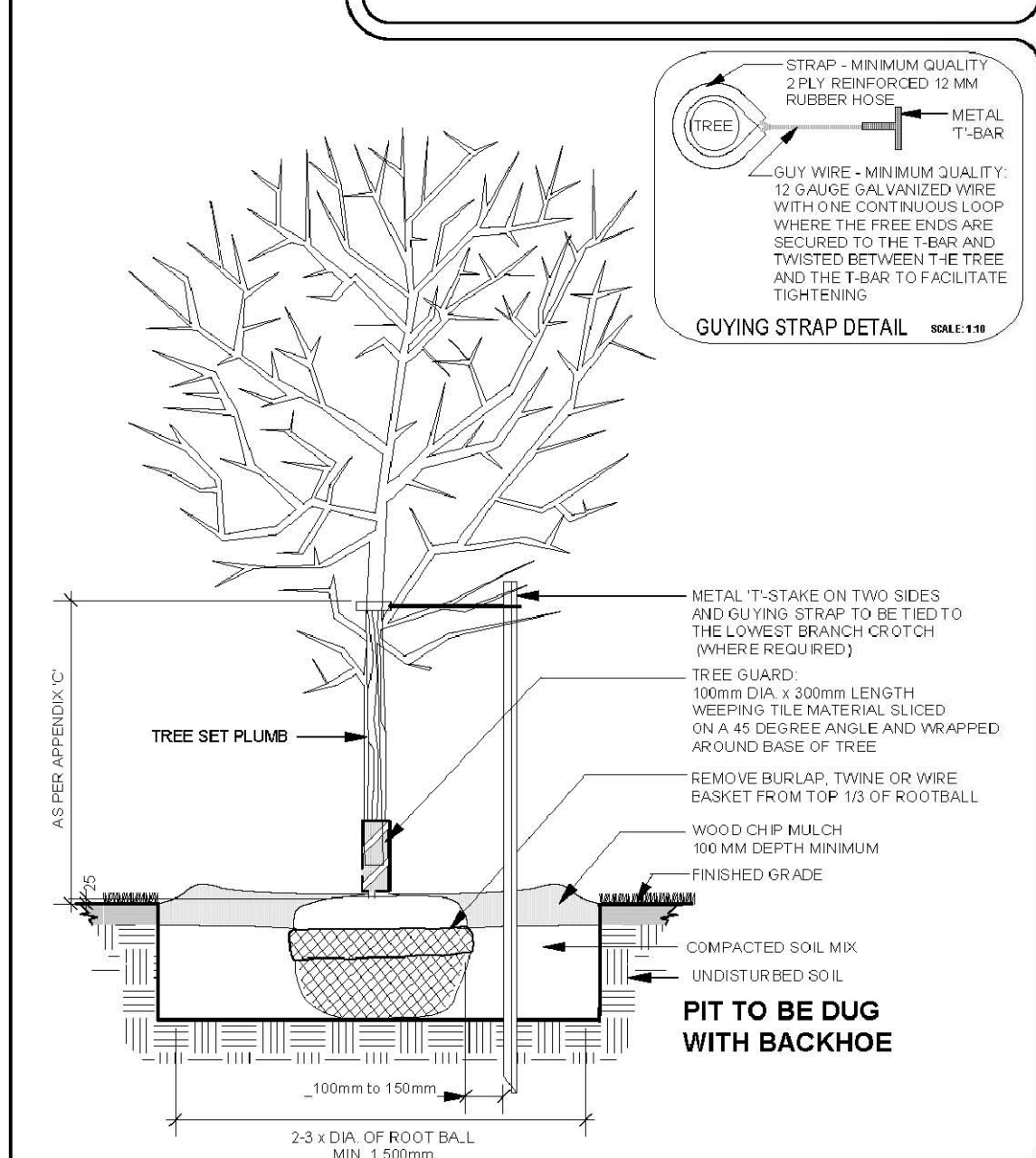
ORIGINAL STAMPED BY: R.K.FOK LI Arch.
 DATE: 2008.10.08

PARTIAL SITE PLAN - LANDSCAPING
 SCALE: 3/16"=1'-0"

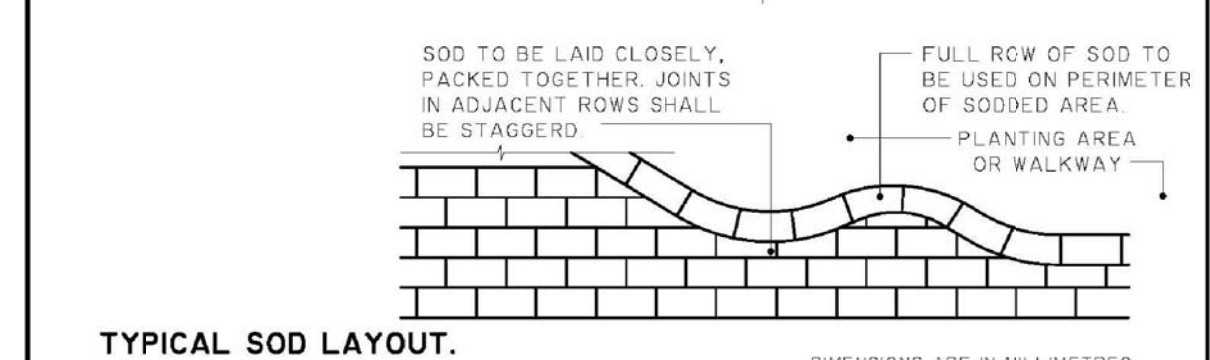
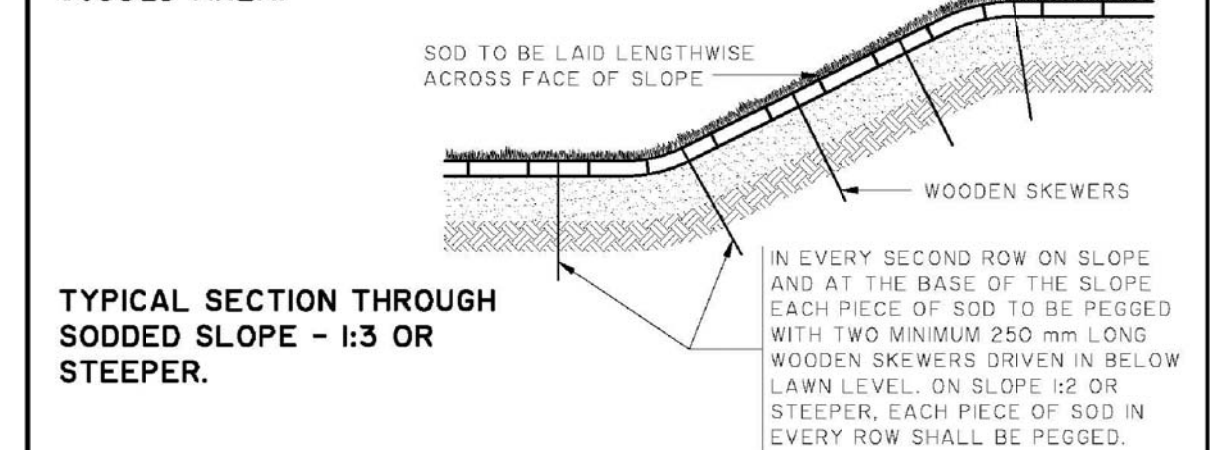
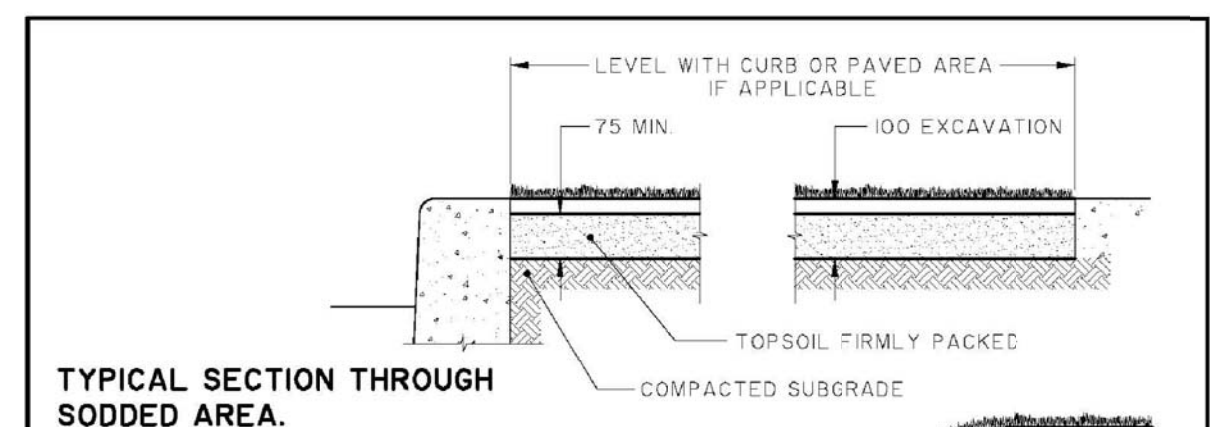


1
 L1 | L1
 TYPICAL SECTION - BEDDING PLANTS
 SCALE: 1"=1'-0"

DECIDUOUS TREE BALLED & BURLAP PLANTING DETAIL
 Drawing No: **SDP-3**



Scale: 1:25
 Drawn By: S.J.F.
 Date: Mar. 20/06
 THE CITY OF WINNIPEG
 Planning, Property and Development Department
 Planning and Land Use Division
 Unit 15 - 10 Fort Street, Winnipeg, MB, R3C 4K5
 Winnipeg



TYPICAL SOD LAYOUT.

THE CITY OF WINNIPEG
 PUBLIC WORKS DEPARTMENT

Reference Spec. No.	Description	By
2 15/05	Top Soil & Excavation Dimensions	Twh
1 12/04	Top Soil & Excavation Dimensions	Twh
NO DATE		

Designed By	Drawn By	Scale
D.R.K.	A.R.	N.T.S.

Checked By	Date	Drawing No.
D.R.K.	05-05-04	

Approved: SURFACE WORKS COMMITTEE
SD-243

NO.	REVISION/DESCRIPTION	BY	DATE
SEALS			

DRAWN BY	CHECKED BY	APPROVED
MMK	USER APPROVAL	

CITY OF WINNIPEG
 PLANNING, PROPERTY AND DEVELOPMENT DEPARTMENT
 CIVIC ACCOMMODATIONS DIVISION
 300 - 65 GARRY ST. R3C 4K4

PROJECT
 CITY ARCHIVES BUILDING
 BARRIER FREE ACCESS TO ENTRANCE & FENCE RECONSTRUCTION
 380 WILLIAM AVENUE

SHEET TITLE
 PARTIAL SITE PLAN
 LANDSCAPING,
 PLANT & TREE SECTIONS

SCALE	PROJECT NO.	SHEET NO.
AS SHOWN	2008-080	L1