

SYMBOL LEGEND	
---	DEMOLITION
---	EXISTING TO REMAIN
---	NEW CONSTRUCTION
	MOLDED CASE CIRCUIT BREAKER
	PANEL
	DISCONNECT
	STAR DELTA TRANSFORMER
	AMMETER
	FREQUENCY METER
	VOLTMETER
CLF	CURRENT LIMITING FUSE
G	INTERLOCKED
MIS	MODULE ISOLATION SWITCH
MBP	MAINTENANCE BYPASS SWITCH
RIB	RECTIFIER INPUT SWITCH

GENERAL NOTES

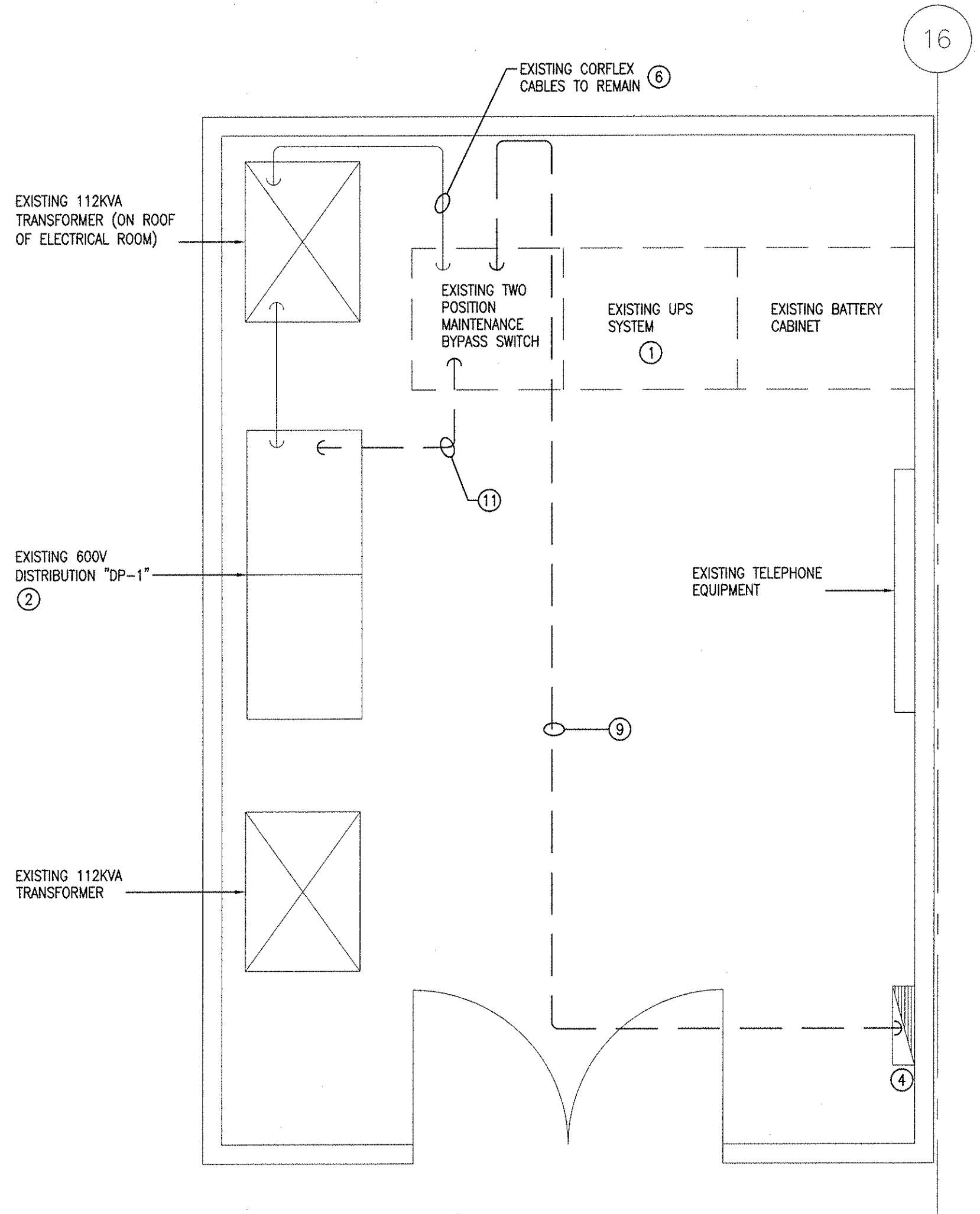
- A. COORDINATE INSTALLATION SUCH THAT OVERALL SHUTDOWN TIME BE REDUCED TO A MINIMUM.
- B. THE SHUTDOWN SHALL BE PERFORMED IN CONJUNCTION WITH ANOTHER (BUT SEPARATE) PROJECT THAT IS OUTSIDE TEMPERATURE DEPENDANT. THE SHUTDOWN WILL ONLY BE ALLOWED WHEN OUTSIDE TEMPERATURES ARE WARM ENOUGH FOR THE BUILDING OVERHEAD GARAGE DOORS TO BE LEFT OPEN FOR AN 8 HOUR DURATION WITHOUT RISK OF FREEZING TO THE BUILDING INTERIOR. THE TARGET IS FOR THE WORK TO BE CARRIED OUT IN MAY OR JUNE. COORDINATE AND CONFIRM WITH OWNER.

DRAWING NOTES

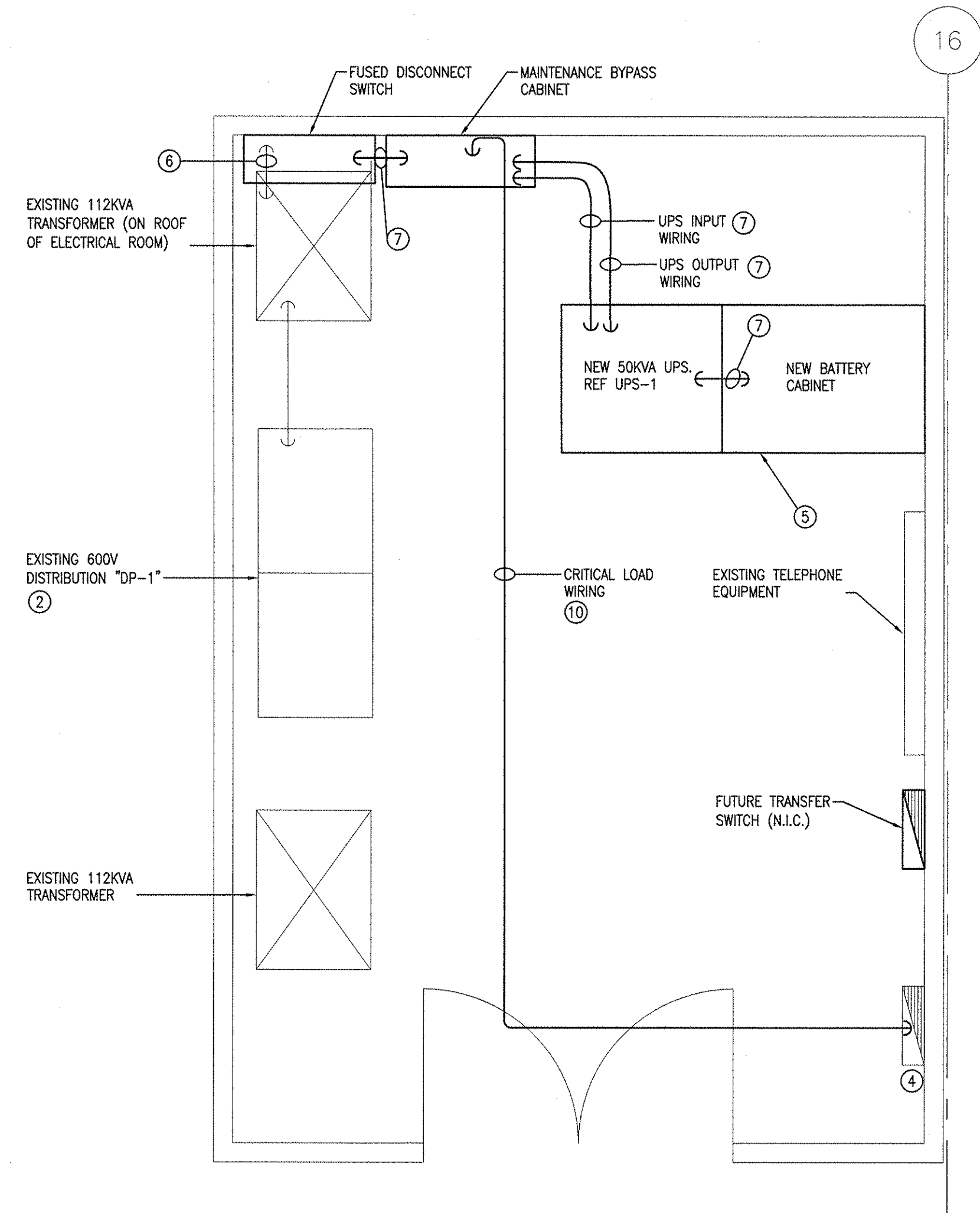
1. EXISTING 60KVA UPS AND BATTERIES TO BE REMOVED. EQUIPMENT SHALL BE FIRST OFFERED TO THE CITY FOR REFUSAL, FOLLOWED BY EATON POWERWARE. CONTACT CHRISTOPHER JOYAL @ (204) 694-0569 EXT. 6631. IF REFUSED, EQUIPMENT SHALL BE LEGALLY DISPOSED OF AS REQUIRED.
2. EXISTING MAIN DISTRIBUTION "DP-1" 1600A/600V/3ø/3W TO REMAIN.
3. EXACT LOCATION OF ALL EQUIPMENT TO BE CONFIRMED ON SITE.
4. EXISTING 400A/120/208V CRITICAL POWER CDP PANEL TO REMAIN.
5. UPS, BATTERY CABINET, BATTERIES AND EXTERNAL BYPASS SUPPLIED BY OWNER. MOVE FROM OWNER'S STORE, LIFT, POSITION, RE-ASSEMBLE AND CONNECT. REVIEW EQUIPMENT RELOCATION ROUTE DURING TENDER AND ALLOW FOR ALL RELOCATION COSTS.
6. DISCONNECT EXISTING CORFLEX CABLES FROM EXISTING MAINTENANCE BYPASS SWITCH AND RE-CONNECT TO NEW FUSED DISCONNECT SWITCH.
7. INPUT / OUTPUT CABLES, INTERNAL BATTERY INTER-CONNECTIONS AND DC CONNECTION TO UPS BY DIVISION 16.
8. ARRANGE FOR UPS TO BE CONNECTED AND RE-COMMISSIONED BY POWERWARE. PROVIDE 100% LOAD TEST, PROVIDE TEMPORARY LOAD BANK AND TEMPORARY CABLES.
9. DISCONNECT AND REMOVE EXISTING FEEDERS FROM MAINTENANCE BYPASS SWITCH TO EXISTING CDP PANEL.
10. PROVIDE NEW FEEDERS AS INDICATED. REFER TO DRAWING E1.1.
11. REMOVE 600V FEEDER TO UPS TRANSFORMER.

DRAWING LIST:

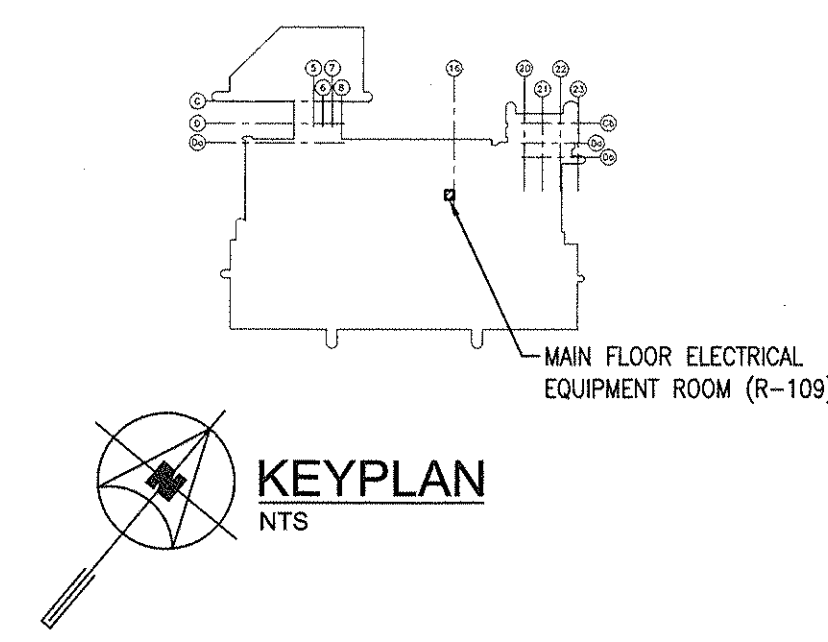
- E1.0 - ELECTRICAL ROOM R-109 - ELECTRICAL DEMO & NEW CONSTRUCTION, DRAWING LIST & SYMBOL LEGEND
- E1.1 - SINGLE LINE DISTRIBUTION SCHEMATIC - DEMOLITION AND NEW CONSTRUCTION



1 ELECTRICAL ROOM R-109 - EQUIPMENT LAYOUT - DEMOLITION ③
E1.0 SCALE: NTS



2 ELECTRICAL ROOM R-109 - EQUIPMENT LAYOUT - NEW CONSTRUCTION ③③
E1.0 SCALE: NTS



7.			
6.			
5.			
4.			
3.			
2.			
1.	ISSUED FOR TENDER	DE	15/01/10
NO.	Revisions	BY	DD/MM/YY

APEGM
Certificate of Authorization
SMS Engineering Ltd.
No. 166 Expiry: April 30, 2010

PROVINCE OF MANITOBA
REGISTERED PROFESSIONAL ENGINEER
17 Jan 2010
Member # 24022

SMS ENGINEERING
SMS Engineering Ltd. Consulting Engineers
770 Bradford Street Winnipeg MB Canada R3H 0J3
Telephone 204.775.0291 Fax 204.772.2153
sms@smseng.com

Project Title
CITY OF WINNIPEG - FORT ROUGE TRANSIT GARAGE. COMPUTER ROOM UPS UPGRADE
WINNIPEG MANITOBA

Drawing Title
ELECTRICAL ROOM R-109 - ELECTRICAL DEMO & NEW CONSTRUCTION, DRAWING LIST & SYMBOL LEGEND

Drawn By JB	Checked By DE	Approved By CJH
Scale AS NOTED	Date NOVEMBER 2009	Project No. 09-255-01
Revision Number 1	Drawing Number E1.0	Sheet Order 1 OF 2