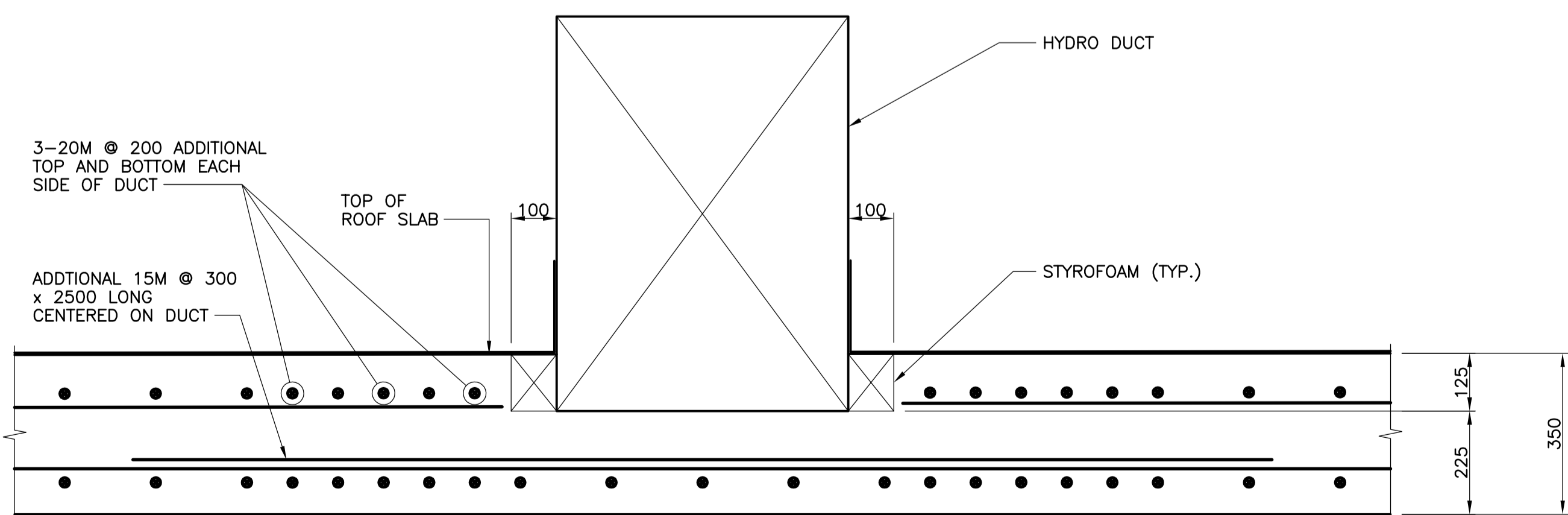


TYPICAL BOX CULVERT SECTION

SECTION B
SCALE 1:20 5 | 6

NOTES:

1. CHAMFER ALL EXPOSED CORNERS 25mm UNLESS NOTED OTHERWISE.



DETAIL

SCALE 1:10 3
5 | 6



B.M. ELEV.	37-023 1320 Ellice Ave. N.W. Corner Bldg Fndtn.	DESIGNED BY	KGW
	233.965 m	DRAWN BY	RCB
		CHECKED BY	KGW
		APPROVED BY	ORIGINAL SIGNED BY: B/WB
1	DAMP PROOFING REMOVED	2009.12.03	BWB
0	ISSUED FOR TENDER	2009.11.05	SJM
NO.	REVISIONS	DATE	BY
		DATE	2009.11.02

DESIGNED BY	KGW
DRAWN BY	RCB
CHECKED BY	KGW
APPROVED BY	ORIGINAL SIGNED BY: B/WB
HOR. SCALE	AS SHOWN
VERTICAL	AS SHOWN
DATE	2009.11.02

DILLON CONSULTING

RELEASED FOR ORIGINAL CONSTRUCTION SIGNED BY: M.B. CHISLETT
DATE: 2009.11.23

ENGINEER'S SEAL
ORIGINAL SIGNED BY
K.G. WILLIS
2009.11.05

THE CITY OF WINNIPEG
PUBLIC WORKS DEPARTMENT

OMAND'S CREEK CULVERT THROUGH ST. MATTHEWS AVENUE

CONCRETE BOX CULVERT DETAILS
SHEET 1 OF 3

CITY DRAWING NUMBER
C331-09-06

SHEET 6 OF 13

BID OPPORTUNITY NUMBER
801-2009

CONSULTANT PROJECT NO.
088683

METRIC
WHOLE NUMBERS INDICATE MILLIMETRES
DECIMALIZED NUMBERS INDICATE METRES

G:\CAD\088683\Contract\Tender\Drawings\Revisions\03\03\09\088683_5105P.dwg