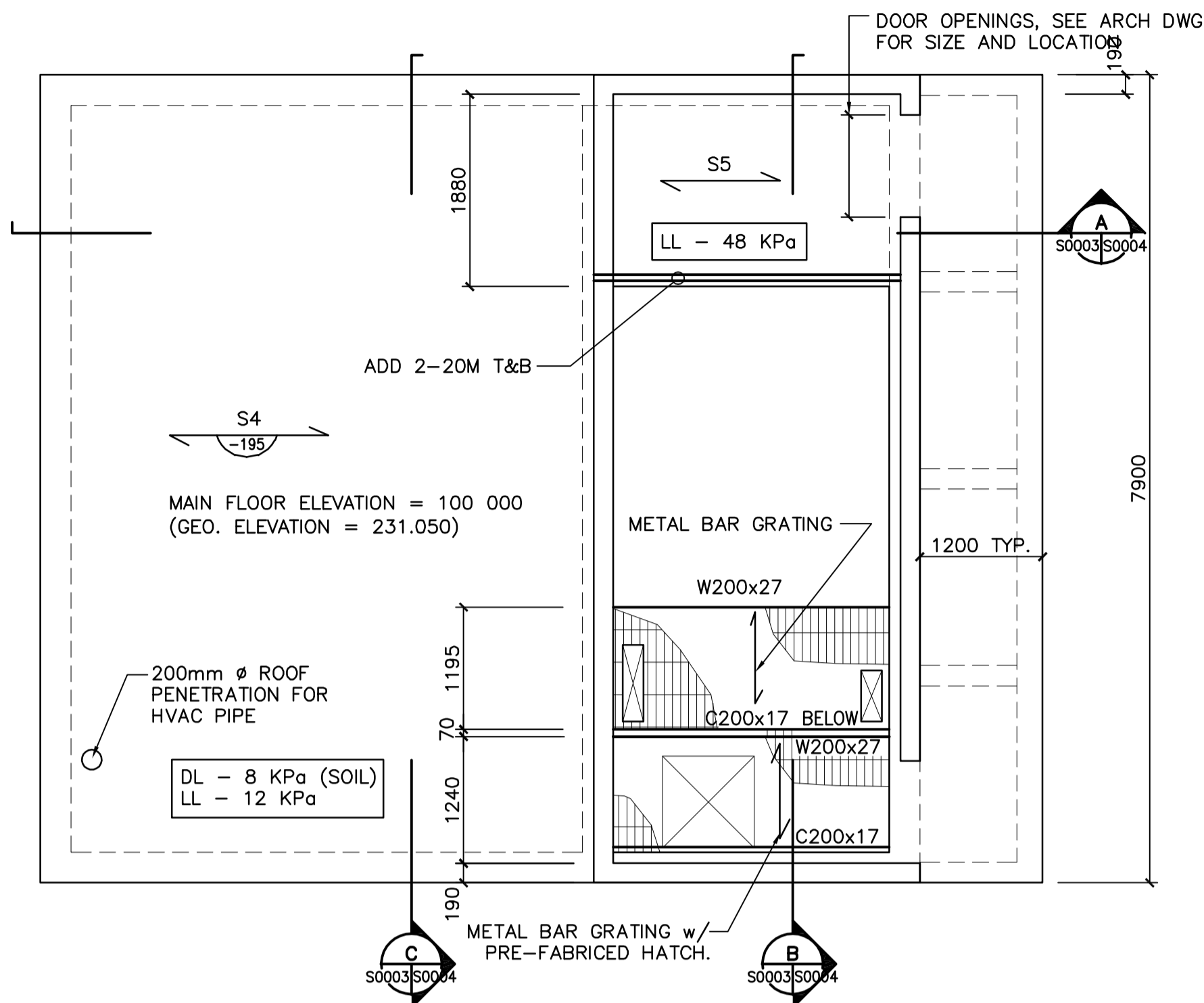
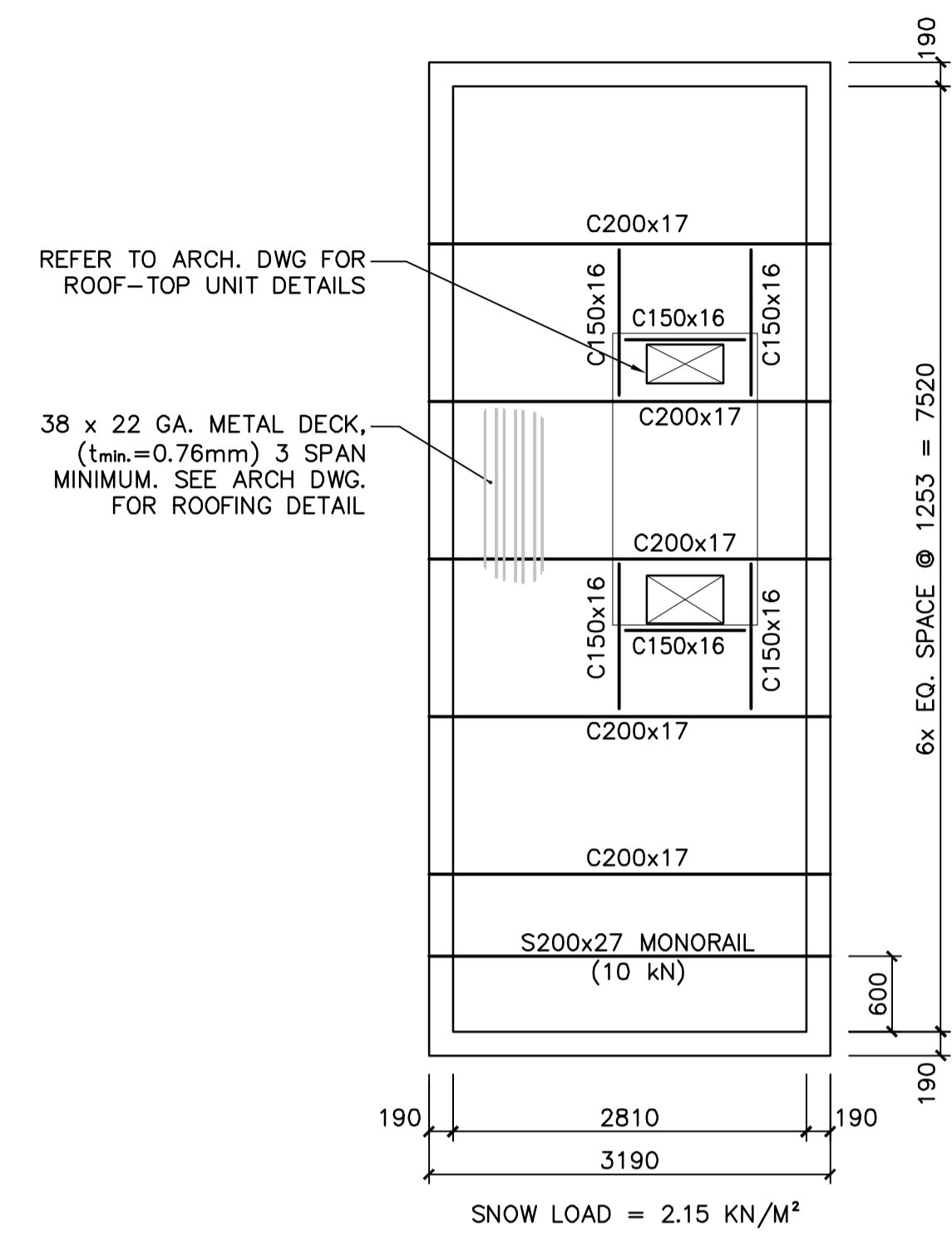


NOTE:
REFER TO PROCESS/MECHANICAL DRAWINGS FOR PIPE PENETRATION TYPE - CORE DRILLED OR EMBEDDED FLANGE TYPES.
PROVIDE ADDITIONAL REBAR AROUND PIPE PENETRATION AS SHOWN ON TYPICAL DETAIL DRAWING. FOR CORE DRILLED TYPE, MARK CENTER OF PIPE PENETRATION ON THE INSIDE FACE OF WALL. CO-ORDINATE PIPE LOCATION SO THAT NO REBAR IS CUT DURING CORE DRILL.

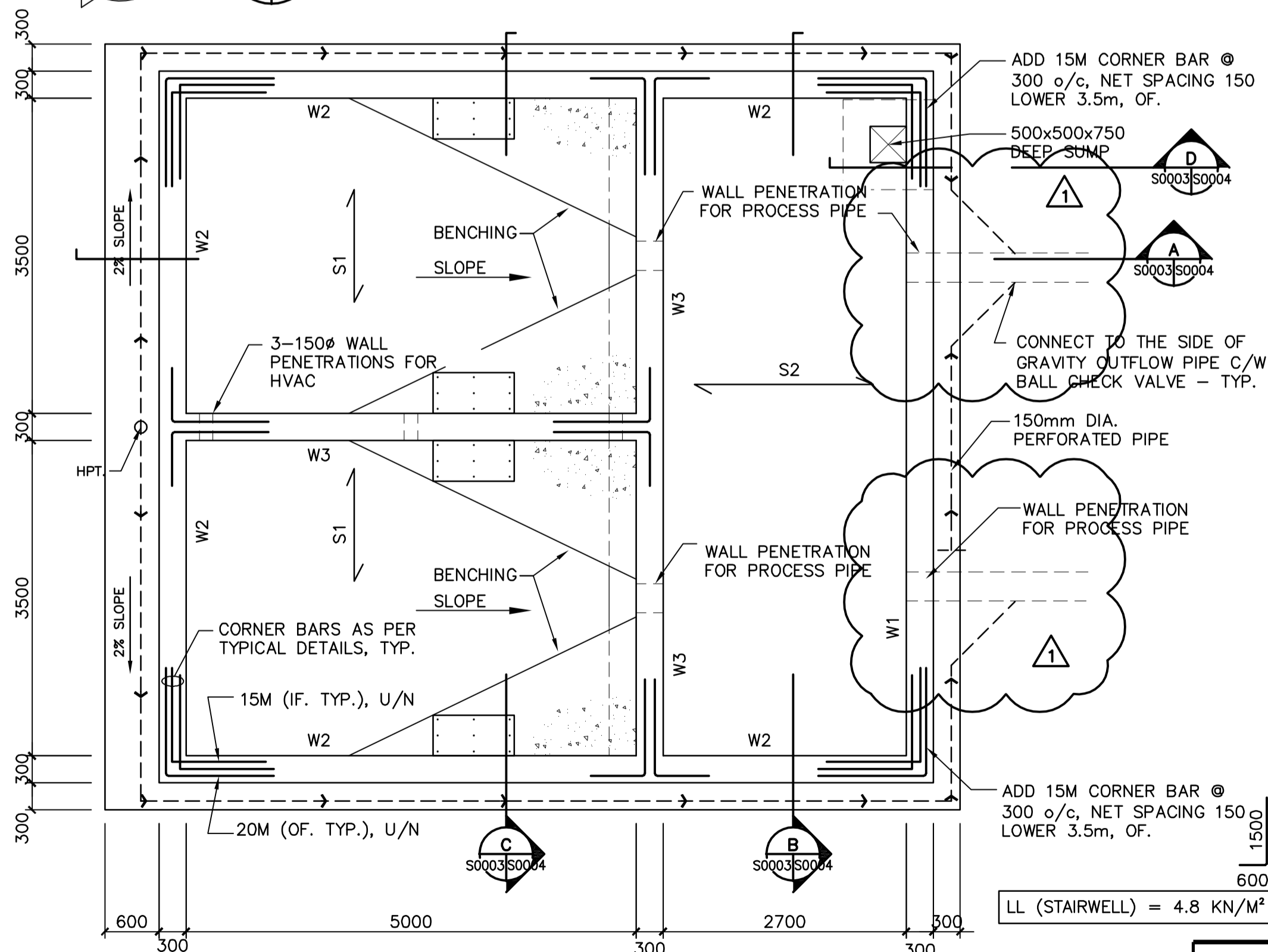
1 LEVEL 2 - BELOW GRADE
S0003/S0003 1:50



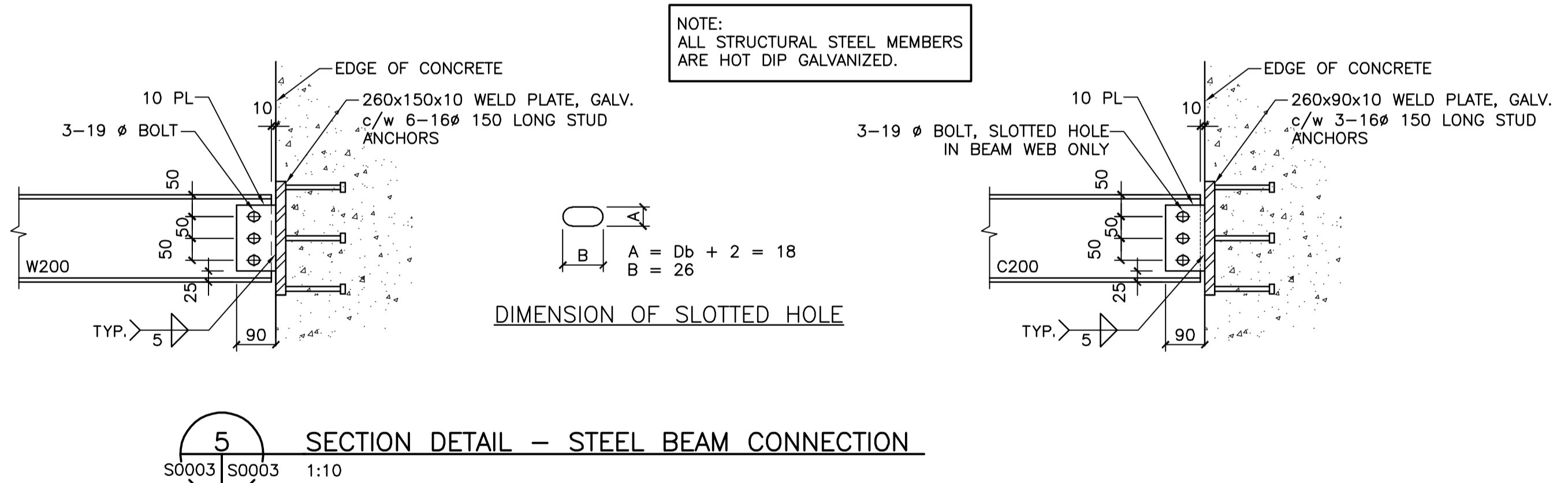
2 LEVEL 1 - GRADE
S0003/S0003 1:50



3 ROOF PLAN
S0003/S0003 1:50



4 FOUNDATION PLAN
S0003/S0003 1:50



5 SECTION DETAIL - STEEL BEAM CONNECTION
S0003/S0003 1:10

METRIC
WHOLE NUMBERS INDICATE MILLIMETRES
DECIMALIZED NUMBERS INDICATE METRES



LOCATION APPROVED UNDERGROUND STRUCTURES

SUPV. U/G STRUCTURES COMMITTEE	DATE
NOTE: LOCATION OF UNDERGROUND STRUCTURES AS SHOWN ARE BASED ON THE BEST INFORMATION AVAILABLE BUT NO GUARANTEE IS GIVEN THAT ALL EXISTING UTILITIES ARE SHOWN OR THAT THE GIVEN LOCATIONS ARE EXACT. CONFIRMATION OF EXISTENCE AND EXACT LOCATION OF ALL SERVICES MUST BE OBTAINED FROM THE INDIVIDUAL UTILITIES BEFORE PROCEEDING WITH CONSTRUCTION.	

B.M. ELEV.			
DESIGNED BY	M.H.	CHECKED BY	T.D.
DRAWN BY	W.O.	APPROVED BY	M.H.
HOR. SCALE:	AS NOTED	RELEASED FOR CONSTRUCTION:	
VERTICAL:		DATE	
NO. REVISIONS	DATE	BY	DATE
1	ADDENDUM #3 - WEEPING TILE		10.03.19
A	ISSUED FOR TENDER		10.02.16
			WO
			09.11.23

Stantec Consulting Ltd.
905 Waverley Street, Winnipeg, Manitoba
Tel 204-489-5900 Fax 204-453-9012

ENGINEER'S SEAL
ORIGINALLY SEALED BY:
MOHAMMAD HOQUE
OCT. 9, 2009

THE CITY OF WINNIPEG
WATER AND WASTE DEPARTMENT

Winnipeg

NORTH END WATER POLLUTION CONTROL CENTRE
HAULED WASTEWATER RECEIVING FACILITIES
HAULED WASTEWATER BUILDING
FOUNDATION, FLOOR AND ROOF PLAN

BID OPPORTUNITY NO. 822-2009
CITY DRAWING NUMBER 1-0101A-S0003-001
SHEET 3 OF 4