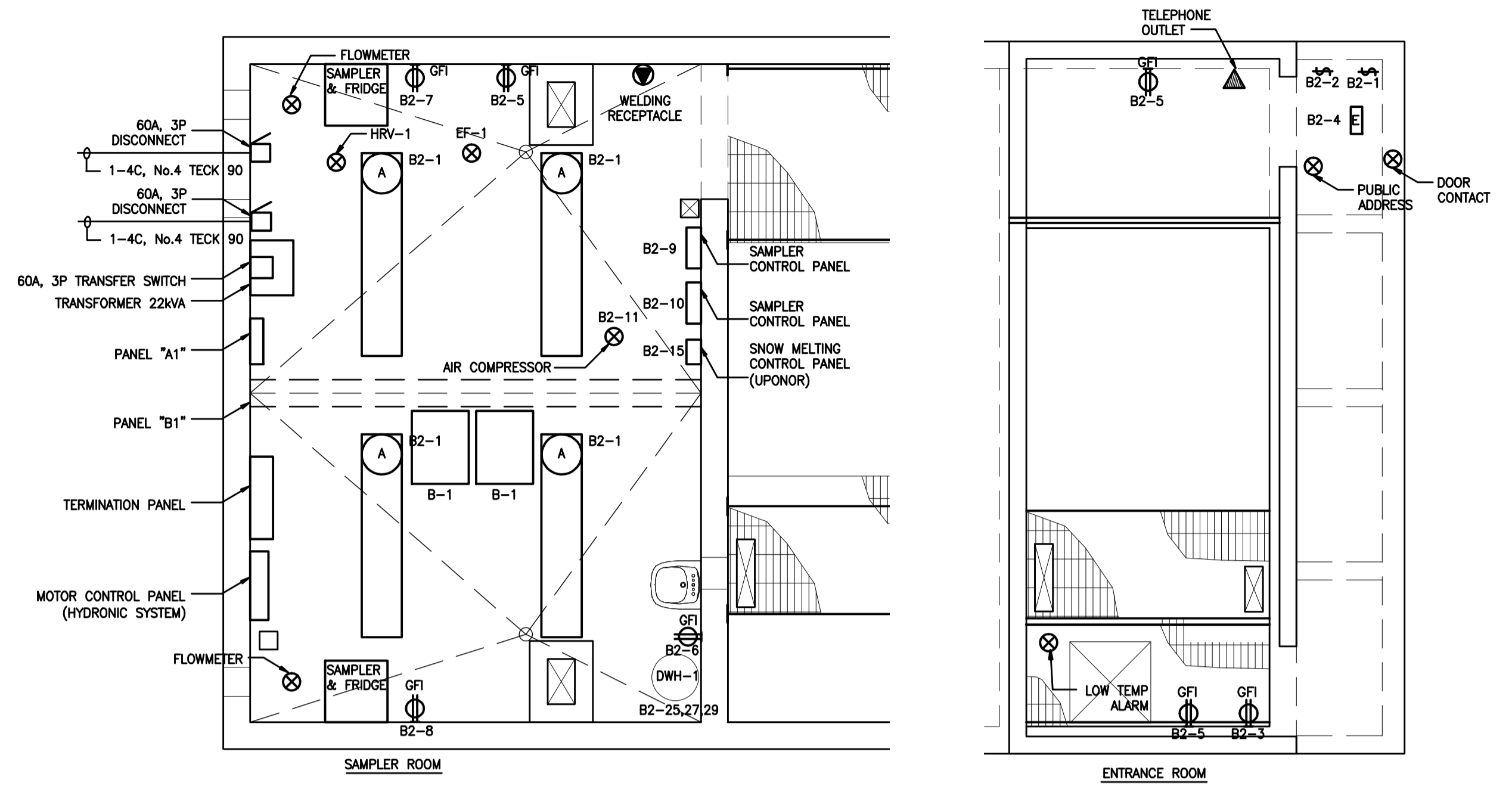
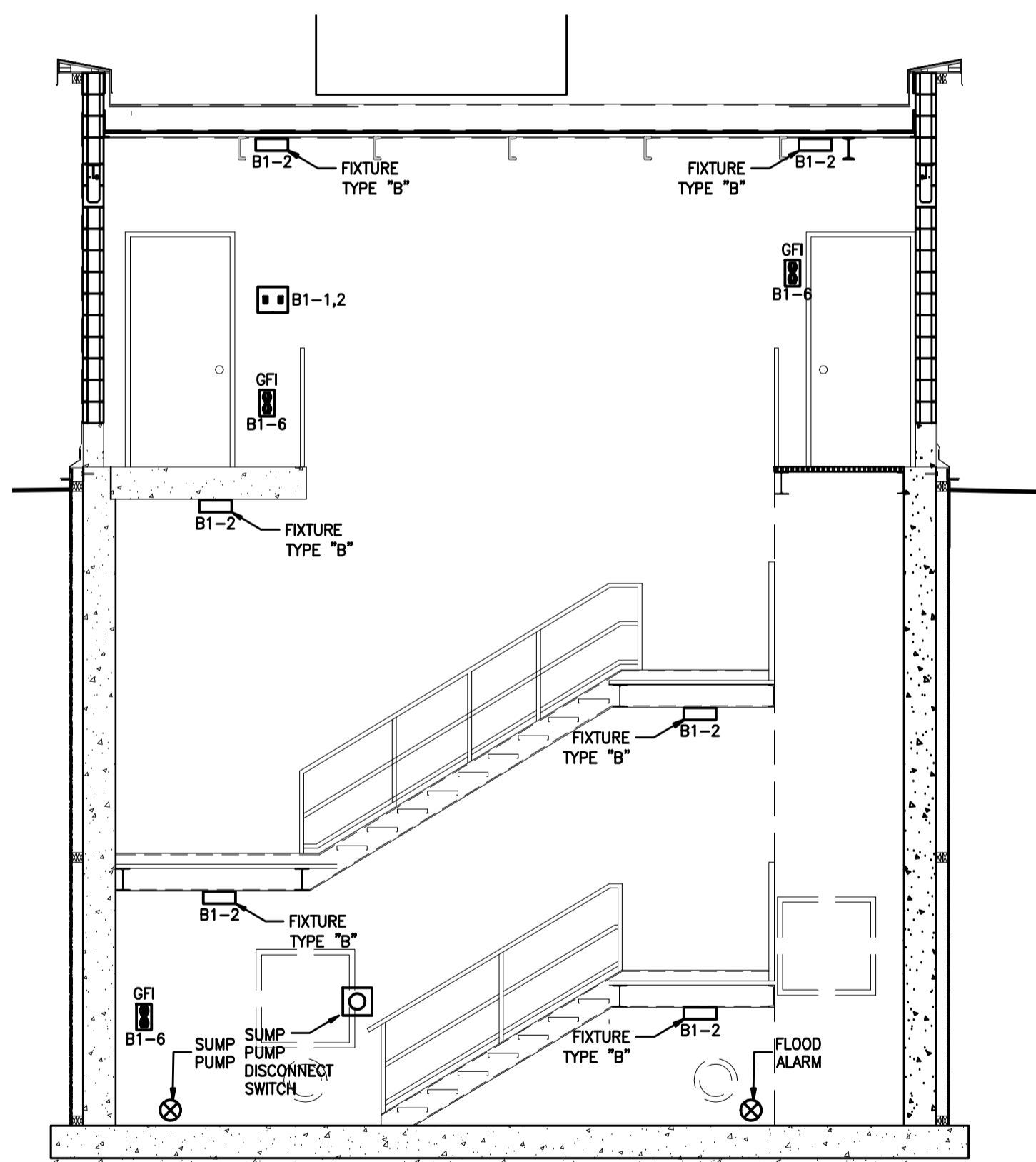


HAULED WASTEWATER BUILDING FLOOR PLAN

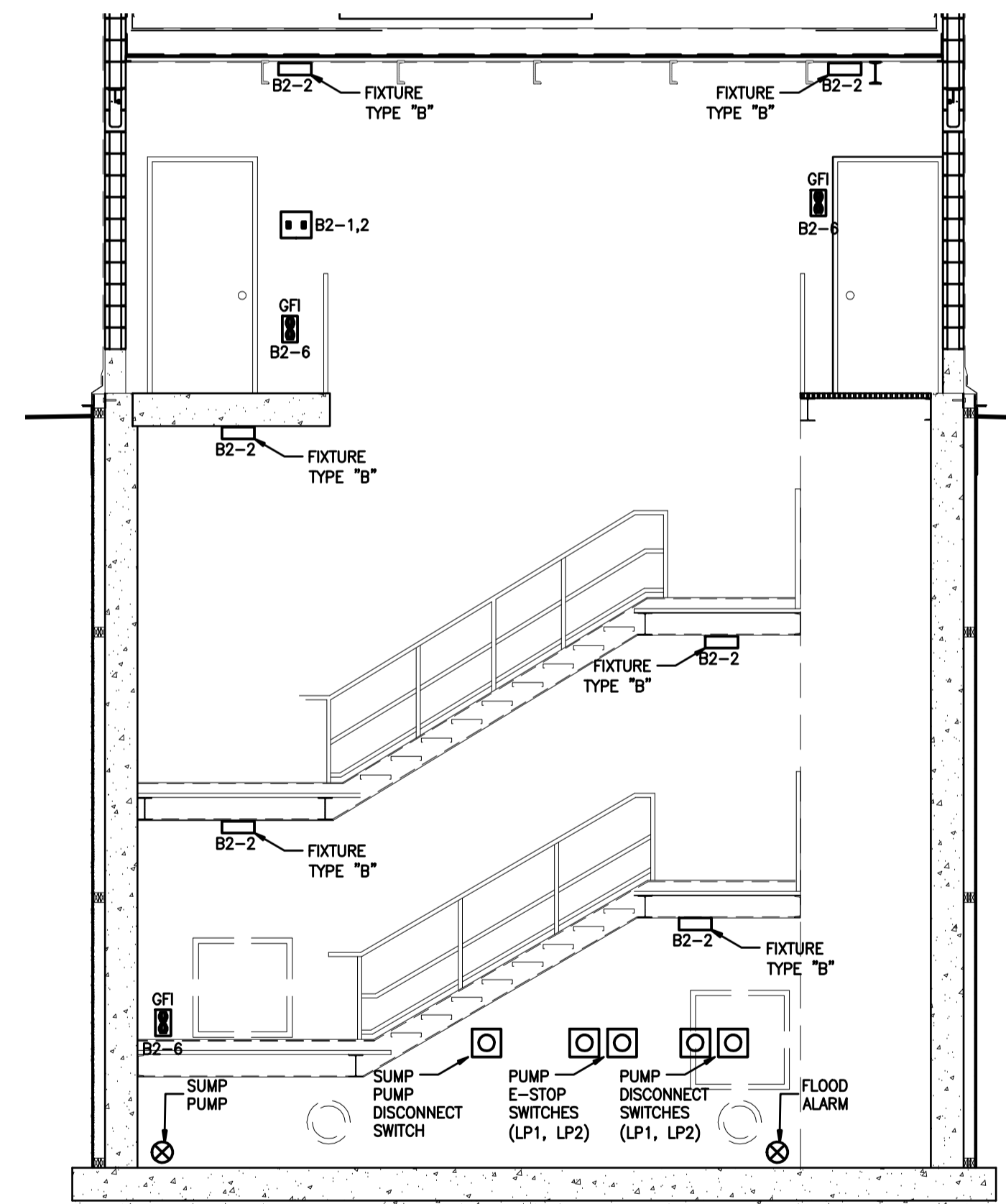


LEACHATE BUILDING FLOOR PLAN



HAULED WASTEWATER BUILDING SECTION

- ⊕ DUPLEX RECEPTACLE
- ⊕ GFI RECEPTACLE
- ☎ TELEPHONE OUTLET
- ⊕ COMPUTER OUTLET
- ⊕ 125V, 15A, SIMPLEX RECEPTACLE (EEMAC 5-15R)
- ⊕ 125V, 15A, DUPLEX RECEPTACLE (EEMAC 5-15R)
- ⊕ 250V, 15A RECEPTACLE (EEMAC 6-15R)
- ⊕ 250V, 20A RECEPTACLE (EEMAC 6-20R)
- ⊕ 250V, 30A RECEPTACLE (EEMAC 6-20R)
- ⊕ SMOKE DETECTOR
- ⊕ HEAT DETECTOR (TEMPERATURE AS INDICATED)
- ⊕ MANUAL PULL STATION
- ⊕ ALARM HORN & STROBE
- ⊕ SILENCIBLE PIEZO HORN
- ⊕ SECURITY CAMERA
- ⊕ DOOR CONTACT
- ⊕ ALARM KEYPAD
- ⊕ MOTION SENSOR
- ⊕ ISOLATOR MODULE
- ⊕ SINGLE POLE WALL SWITCH
- ⊕ 3 WAY WALL SWITCH
- ⊕ VARIABLE SPEED SWITCH
- ⊕ PILOT LIGHT SWITCH
- ⊕ DISCONNECT SWITCH
- ⊕ UNIT HEATER
- ⊕ THERMOSTAT
- ▬ BASEBOARD HEATER



LEACHATE BUILDING SECTION



LOCATION APPROVED UNDERGROUND STRUCTURES

SUPV. U/G STRUCTURES COMMITTEE DATE

NOTE:
LOCATION OF UNDERGROUND STRUCTURES AS SHOWN ARE BASED ON THE BEST INFORMATION AVAILABLE BUT NO GUARANTEE IS GIVEN THAT ALL EXISTING UTILITIES ARE SHOWN OR THAT THE GIVEN LOCATIONS ARE EXACT. CONFIRMATION OF EXISTENCE AND EXACT LOCATION OF ALL SERVICES MUST BE OBTAINED FROM THE INDIVIDUAL UTILITIES BEFORE PROCEEDING WITH CONSTRUCTION.

NO.	REVISIONS	DATE	BY
A	ISSUED FOR TENDER	10.02.16	S.T.

Stantec Consulting Ltd. 905 Waverley Street, Winnipeg, Manitoba Tel 204-489-5900 Fax 204-453-9012		ENGINEER'S SEAL DESIGNED BY S.T. CHECKED BY D.D. DRAWN BY S.T. APPROVED BY - HOR. SCALE: - RELEASED FOR CONSTRUCTION: VERTICAL: 09.11.20 DATE
---	--	---

THE CITY OF WINNIPEG WATER AND WASTE DEPARTMENT	NORTH END WATER POLLUTION CONTROL CENTRE HAULED WASTEWATER RECEIVING FACILITIES HAULED WASTEWATER AND LEACHATE RECEIVING BUILDINGS HAULED WASTEWATER BUILDING FLOOR PLAN LEACHATE BUILDING FLOOR PLAN
TENDER NO. 822-2009 CITY DRAWING NUMBER 1-0101A-E0006-001	SHEET 1 OF 1