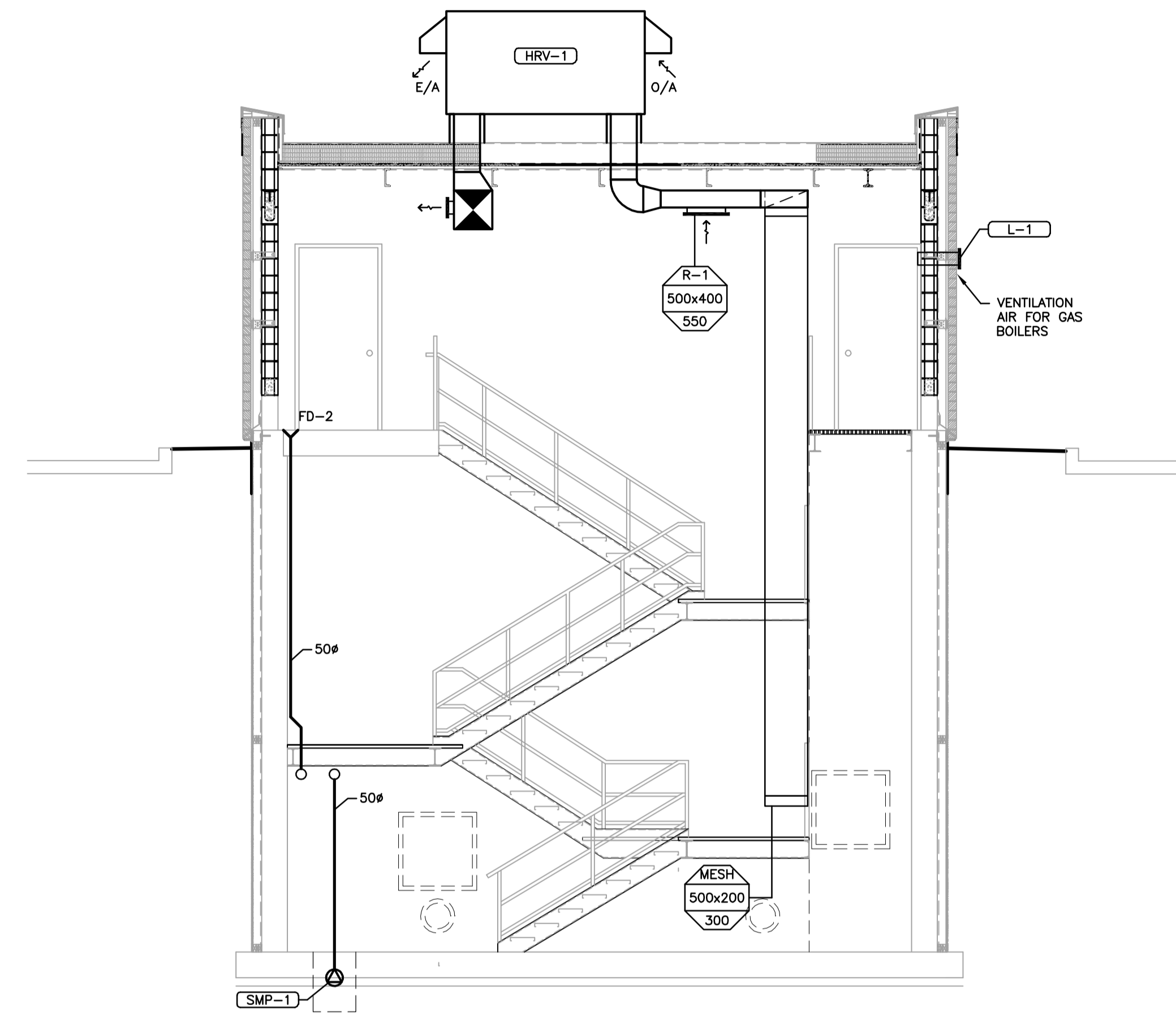


1 SECTION  
M0002 M0003 1:50



2 SECTION  
M0002 M0003 1:50

V:\1170\winnipeg\11701830\dwg\11701830.dwg (V:\1170\winnipeg\11701830\dwg\11701830.dwg) (Mechanical) (North End) (1-0101A-M0003-001.dwg)  
 2010-01-23 08:48:09 By: jhng



LOCATION APPROVED UNDERGROUND STRUCTURES	
SUPV. U/G STRUCTURES COMMITTEE	DATE
NOTE: LOCATION OF UNDERGROUND STRUCTURES AS SHOWN ARE BASED ON THE BEST INFORMATION AVAILABLE BUT NO GUARANTEE IS GIVEN THAT ALL EXISTING UTILITIES ARE SHOWN OR THAT THE GIVEN LOCATIONS ARE EXACT. CONFIRMATION OF EXISTENCE AND EXACT LOCATION OF ALL SERVICES MUST BE OBTAINED FROM THE INDIVIDUAL UTILITIES BEFORE PROCEEDING WITH CONSTRUCTION.	

B.M. ELEV.	
NO. REVISIONS	DATE BY
A	ISSUED FOR TENDER 10.02.16 L.W.

<b>Stantec Consulting Ltd.</b> 905 Waverley Street, Winnipeg, Manitoba Tel 204-489-5900 Fax 204-453-9012			
DESIGNED BY	L.W.	CHECKED BY	A.B.
DRAWN BY	J.L.T.	APPROVED BY	A.B.
HOR. SCALE:	AS NOTED	RELEASED FOR CONSTRUCTION:	
VERTICAL:		DATE	09.11.13

ENGINEER'S SEAL	
BID OPPORTUNITY NO.	822-2009

<b>THE CITY OF WINNIPEG</b> WATER AND WASTE DEPARTMENT	
<b>NORTH END WATER POLLUTION CONTROL CENTRE</b> HAULED WASTEWATER RECEIVING FACILITIES HAULED WASTEWATER RECEIVING BUILDING MECHANICAL SECTIONS	
CITY DRAWING NUMBER	1-0101A-M0003-001
SHEET	1 OF 1