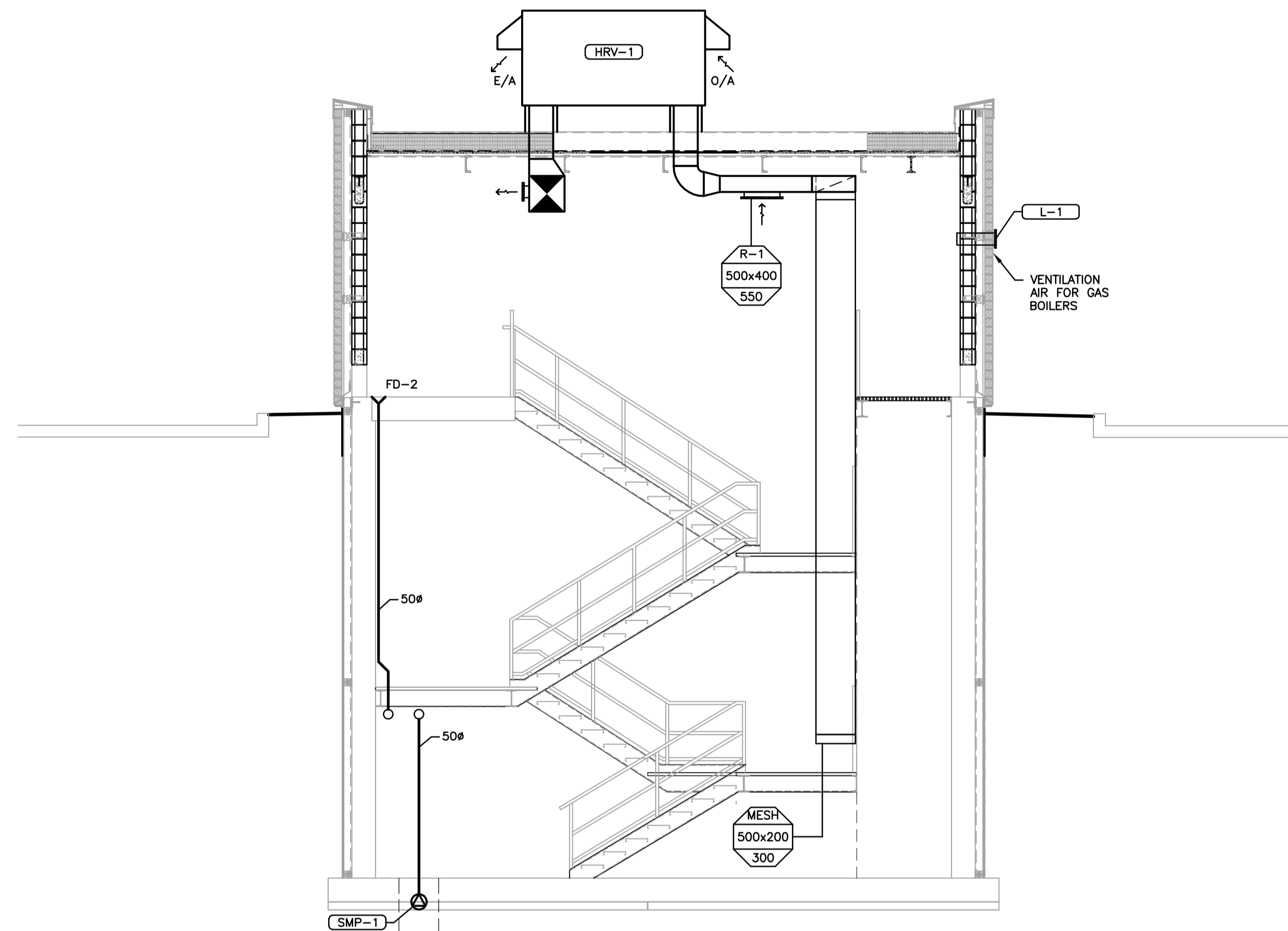


1 SECTION
M0003 M0004 1:50



2 SECTION
M0003 M0004 1:50

V:\1170\waha\11711830\drawings\04_mechanical\04_mechanical\sheet_files\mechanical\South End\1-0102A-M0004-001.dwg
 2010-02-01 03:17PM By: jhng



LOCATION APPROVED UNDERGROUND STRUCTURES			
SUPV. U/G STRUCTURES COMMITTEE	DATE		
NOTE: LOCATION OF UNDERGROUND STRUCTURES AS SHOWN ARE BASED ON THE BEST INFORMATION AVAILABLE BUT NO GUARANTEE IS GIVEN THAT ALL EXISTING UTILITIES ARE SHOWN OR THAT THE GIVEN LOCATIONS ARE EXACT. CONFIRMATION OF EXISTENCE AND EXACT LOCATION OF ALL SERVICES MUST BE OBTAINED FROM THE INDIVIDUAL UTILITIES BEFORE PROCEEDING WITH CONSTRUCTION.			
A	ISSUED FOR TENDER	10.02.16	L.W.
NO.	REVISIONS	DATE	BY

B.M. ELEV.			
DESIGNED BY	L.W.	CHECKED BY	A.B.
DRAWN BY	J.L.T.	APPROVED BY	A.B.
HOR. SCALE:	AS NOTED	RELEASED FOR CONSTRUCTION:	
VERTICAL:		DATE	
DATE	09.11.13	DATE	

Stantec Consulting Ltd.
 905 Waverley Street, Winnipeg, Manitoba
 Tel 204-489-5900 Fax 204-453-9012

ENGINEER'S SEAL

THE CITY OF WINNIPEG
 WATER AND WASTE DEPARTMENT

Winnipeg

SOUTH END WATER POLLUTION CONTROL CENTRE
 HAULED WASTEWATER RECEIVING FACILITIES
 HAULED WASTEWATER RECEIVING BUILDING
 MECHANICAL SECTIONS

BID OPPORTUNITY NO. 822-2009
 CITY DRAWING NUMBER 1-0102A-M0004-001
 SHEET 1 OF 1