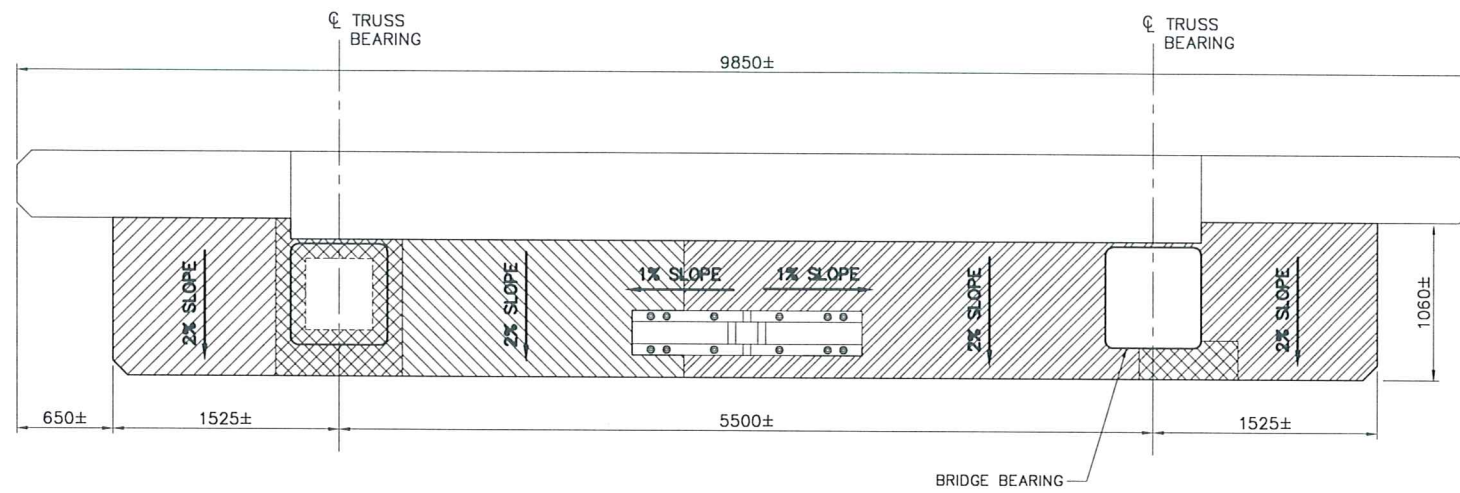
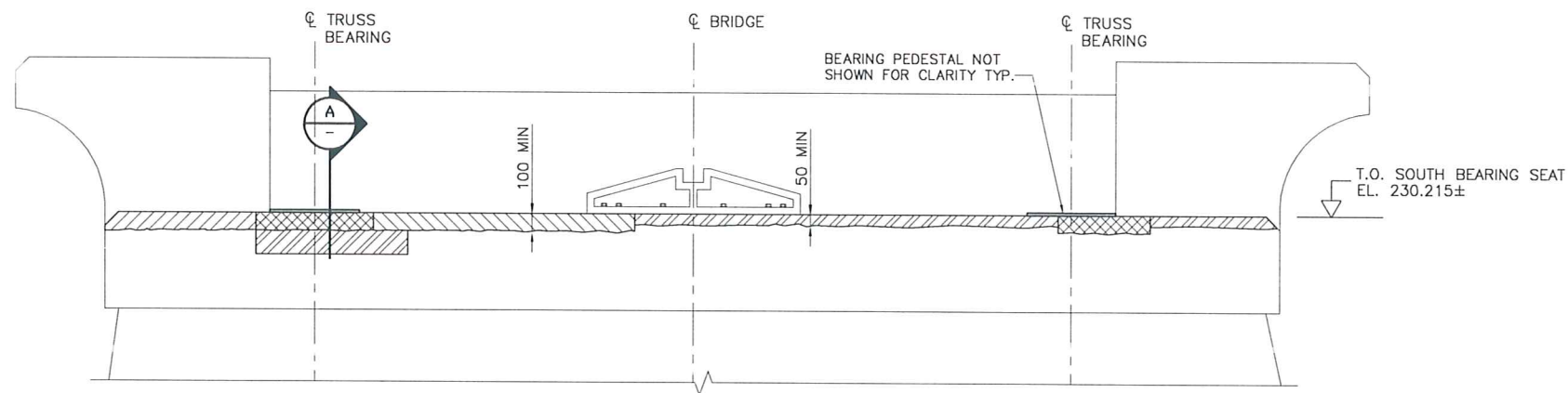


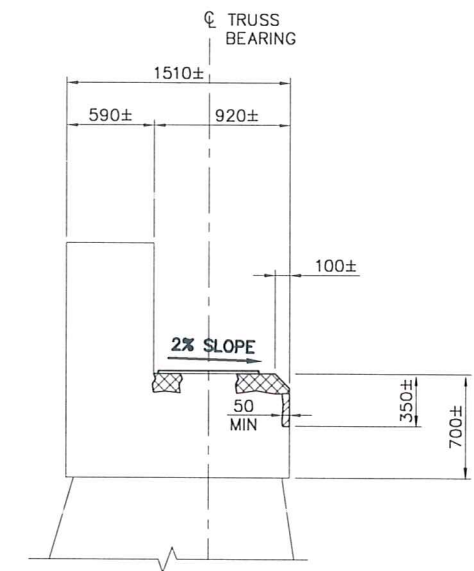
PROVIDE A MINIMUM LOCAL 1% SLOPE AWAY FROM ALL BEARINGS (TYP.)



PLAN
SCALE: 1:25



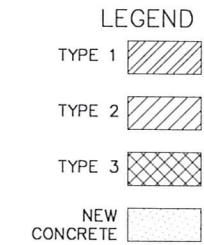
SOUTH ELEVATION
SCALE: 1:25



SECTION A-A
SCALE: 1:25

GENERAL NOTES:

- REMOVE MINIMUM 50mm AND ALL UNSOUND CONCRETE FROM SURFACES SHOWN.
- APPROXIMATE QUANTITIES FOR THE PIER CAP REPAIRS SHALL BE BASED ON THE FOLLOWING TYPES OF REPAIRS AND THE EXTENTS SHOWN ABOVE:

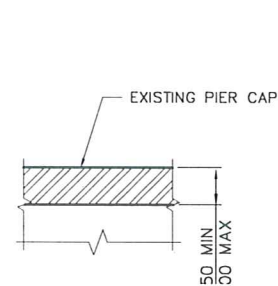


- TYPE 1 - AREAS THAT REQUIRE LESS THAN 100mm DEPTH REMOVAL OF UNSOUND CONCRETE SHALL BE REPAIRED USING UNREINFORCED CONCRETE OR APPROVED GROUT.
- TYPE 2 - AREAS THAT REQUIRE GREATER THAN 100mm DEPTH REMOVAL OF UNSOUND CONCRETE SHALL BE REPAIRED USING REINFORCED CONCRETE.
- TYPE 3 - THE AREA BENEATH THE OUTER RIM OF THE BEARING SEATS REQUIRE REMOVAL OF 100mm MINIMUM DEPTH CONCRETE AND SHALL BE REPAIRED WITH REINFORCED CONCRETE AS SHOWN.

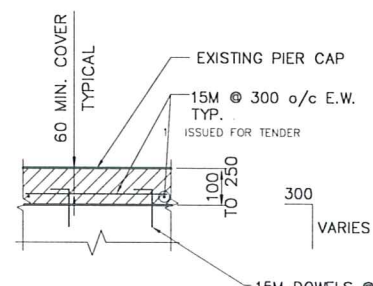
NOTE:

THE DETAILS AND DIMENSIONS SHOWN ON THE DRAWINGS HAVE BEEN OBTAINED FROM FIELD MEASUREMENT. ORIGINAL DESIGN DRAWING ARE UNAVAILABLE. CONTRACTOR TO VERIFY ALL DETAILS AND DIMENSIONS AND REPORT ANY DISCREPANCIES TO THE CONTRACT ADMINISTRATOR PRIOR TO COMMENCING WORK.

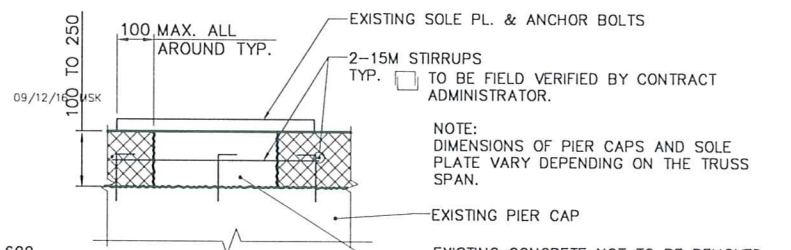
METRIC
ALL DIMENSIONS ARE IN mm
UNLESS NOTED OTHERWISE



DETAIL - TYPE 1
SCALE 1:10



DETAIL - TYPE 2
SCALE 1:10



DETAIL - TYPE 3
SCALE 1:10

NOTE:
DIMENSIONS OF PIER CAPS AND SOLE PLATE VARY DEPENDING ON THE TRUSS SPAN.
EXISTING CONCRETE NOT TO BE REMOVED AT CENTER OF BEARING PLATE. IF THE UNSOUND CONCRETE EXTENDS GREATER THAN 100mm BENEATH THE BEARING PLATE, NOTIFY THE CONTRACT ADMINISTRATOR PRIOR TO REMOVAL BEYOND THE 100mm LIMIT.

DESIGNED BY	AB	CHECKED BY	SBB			ELM PARK PEDESTRIAN BRIDGE SUBSTRUCTURE REPAIR WORKS	
DRAWN BY	MSK	APPROVED BY	EBL	HOR. SCALE: AS NOTED VERTICAL: AS NOTED		BID OPPORTUNITY 850-2009 SHEET 3 OF 6	
0 ISSUED FOR TENDER	09/12/16	MSK		DATE 2009-12-16		CITY DRAWING NUMBER B131-09-3	
CONSULTANT DRAWING NO. CT-3				PIER 1 BEARING SEAT REPAIRS			