


CLIENT CITY OF WINNIPEG - WATER AND WASTE DEPARTMENT
PROJECT RAVELSTON FPS - OUTFALL REPLACEMENT
SITE RAVELSTON DEEP WATER POND
LOCATION UPPER BANK
DRILLING METHOD Solid Stem, F350

JOB NO. 09-0107-15
 GROUND ELEV. 228.51 m
 TOP OF PVC ELEV.
 WATER ELEV.
 DATE DRILLED 19-Oct-09
 UTM (m) N 5,529,406
 E 640,990

ELEVATION (m)	DEPTH		GRAPHICS	DESCRIPTION AND CLASSIFICATION	PIEZ. LOG	DEPTH (m)	SAMPLE TYPE	NUMBER	RECOVERY %	R.Q.D. %	Cu TORVANE (kPa) ◆					
	(m)	(ft)									PL	MC	LL			
228.5				TOPSOIL - Damp, with rootlets.												
228				CLAY - Brown, damp, firm, high plasticity, some sand, with gravel (5-10 mm), trace rootlets, silt inclusions (1-5 mm).				S1								
	1							S2								
		5		- Trace oxidation below 1.52 m.				S3								
227								S4								
	2							S5								
		10		- Trace gravel (1-2 mm) below 3.05 m.				S6								
226								S7								
	3							S8								
		15		- Stiff below 4.57 m.				S9								
225								S10								
	4							S11								
		20		- Potential cobble at 5.33 m.				S12								
224								S13								
	5							S14								
		25		- Grey, moist, soft, trace gravel (2-10 mm), trace cobbles (15-20 mm) below 6.40 m.				S15								
223								S16								
	6															
		30		- Water entering hole at 7.01 m.		8.2										
222																
	7															
221																
	8															
220																
	9															
219																

SPT & TORVANE 3 P:\PROJECTS\2009\09-0107-15\DESIGN\GEO\LOGS\UPPER BANK.GPJ

SAMPLE TYPE  Auger Grab

CONTRACTOR **Paddock Drilling Ltd.** INSPECTOR **D. GARBER**

APPROVED _____ DATE 12/7/09

ELEVATION (m)	DEPTH (m) (ft)	GRAPHICS	DESCRIPTION AND CLASSIFICATION	PIEZ. LOG	DEPTH (m)	SAMPLE TYPE	NUMBER	RECOVERY %	R.Q.D. %	Cu TORVANE (kPa) ◆			
										PL	MC	LL	
218.1			TILL - Tan, wet, trace cobbles (15-20 mm).				S17						
218	35							S18					
217	11							S19					
216.3	40		END OF HOLE AT 12.19 m.										
216			Notes: 1. Pneumatic installed to a depth of 8.23 m below grade, serial number 032864.										
215	45												
214	14												
213	50												
212	55												
211	60												
210	65												
209	70												
208													
207													

SPT & TORVANE 3 P:\PROJECTS\2009\09-01\07-15\DESIGN\GEOLOGS\UPPER BANK.GPJ

SAMPLE TYPE Auger Grab

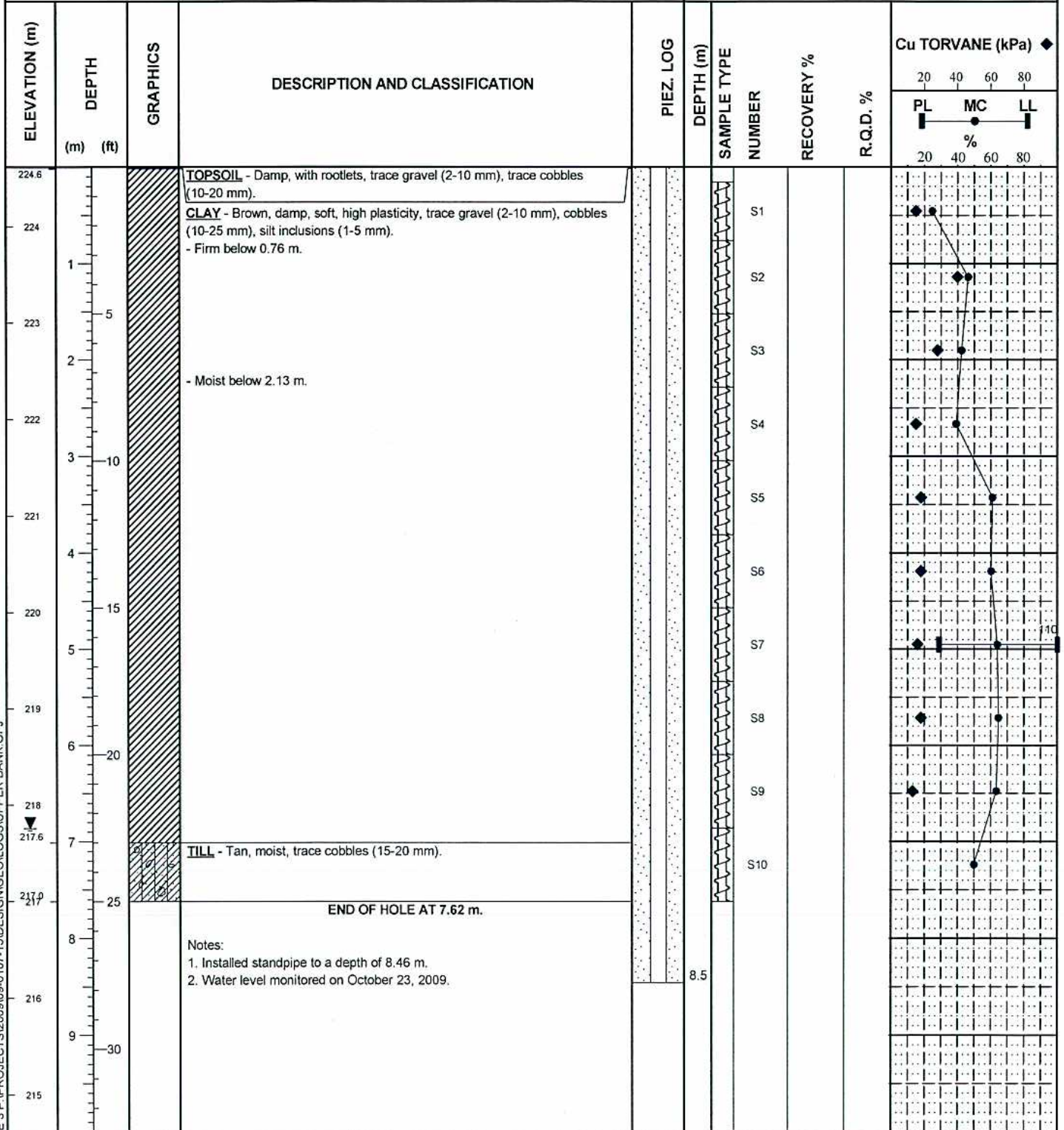
CONTRACTOR
Paddock Drilling Ltd.

INSPECTOR
D. GARBER

APPROVED _____ DATE **12/7/09**

CLIENT CITY OF WINNIPEG - WATER AND WASTE DEPARTMENT
PROJECT RAVELSTON FPS - OUTFALL REPLACEMENT
SITE RAVELSTON DEEP WATER POND
LOCATION LOWER BANK
DRILLING METHOD Solid Stem, F350

JOB NO. 09-0107-15
 GROUND ELEV. 224.62 m
 TOP OF PVC ELEV. 225.71 m
 WATER ELEV. 217.76 m
 DATE DRILLED 19-Oct-09
 UTM (m) N 5,529,414
 E 640,964



SPT & TORVANE 3 P:\PROJECTS\2009\09-0107-15\DESIGN\GEOLOG\UPPER BANK.GPJ

SAMPLE TYPE Auger Grab

CONTRACTOR **Paddock Drilling Ltd.**

INSPECTOR **D. GARBER**

APPROVED _____ DATE **12/7/09**