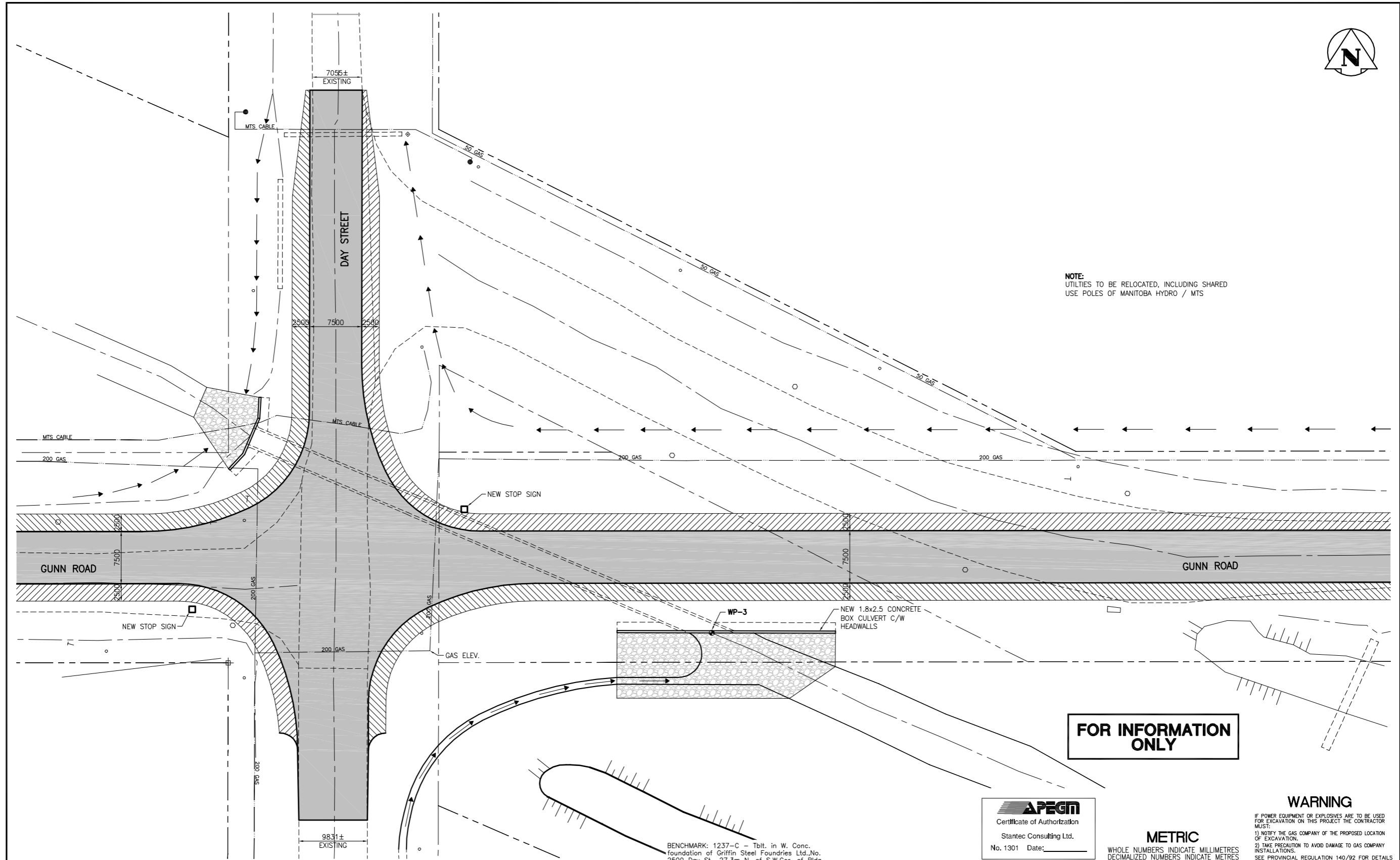




NOTE:
UTILITIES TO BE RELOCATED, INCLUDING SHARED
USE POLES OF MANITOBA HYDRO / MTS



FOR INFORMATION ONLY

APEGM
Certificate of Authorization
Stantec Consulting Ltd.
No. 1301 Date: _____

WARNING
IF POWER EQUIPMENT OR EXPLOSIVES ARE TO BE USED FOR EXCAVATION ON THIS PROJECT THE CONTRACTOR MUST:
1) NOTIFY THE GAS COMPANY OF THE PROPOSED LOCATION OF EXCAVATION.
2) TAKE PRECAUTION TO AVOID DAMAGE TO GAS COMPANY INSTALLATIONS.
SEE PROVINCIAL REGULATION 140/92 FOR DETAILS

METRIC
WHOLE NUMBERS INDICATE MILLIMETRES
DECIMAL NUMBERS INDICATE METRES

BENCHMARK: 1237-C - Tibt. in W. Conc. Foundation of Griffin Steel Foundries Ltd., No. 2500 Day St., 27.3m N. of S.W. Cor. of Bldg.

150 WM	WATERMAIN	150 WM	HYDRO	150 WM	WATERMAIN	150 WM	WATERMAIN
Hydrant	HYDRANT	Hydrant	M.T.S.	Hydrant	HYDRANT, VALVE	Hydrant	HYDRANT, VALVE
Valve	VALVE	Valve	CONCRETE	Valve	LAND DRAINAGE SEWER	Valve	LAND DRAINAGE SEWER
300 LBS	LAND DRAINAGE SEWER	300 LBS	ASPHALT	300 LBS	WASTE WATER SEWER	300 LBS	WASTE WATER SEWER
250 WWS	WASTE WATER SEWER	250 WWS	SIDEWALK	250 WWS	WASTE WATER SEWER	250 WWS	WASTE WATER SEWER
Manhole	MANHOLE	Manhole	PROPERTY LINE	Manhole	NORTH OR WEST GUTTER	Manhole	NORTH OR WEST GUTTER
Catch Basin	CATCH BASIN	Catch Basin	SURVEY BAR	Catch Basin	SOUTH OR EAST GUTTER	Catch Basin	SOUTH OR EAST GUTTER
Curb Inlet	CURB INLET	Curb Inlet	DITCH	Curb Inlet	NORTH OR WEST DITCH	Curb Inlet	NORTH OR WEST DITCH
Junctions	JUNCTIONS	Junctions	ELEVATION	Junctions	SOUTH OR EAST DITCH	Junctions	SOUTH OR EAST DITCH
Culvert	CULVERT	Culvert	SIDEWALK RAMP	Culvert	NORTH OR WEST DITCH	Culvert	NORTH OR WEST DITCH
Gas	GAS	Gas		Gas	SOUTH OR EAST DITCH	Gas	SOUTH OR EAST DITCH
EXISTING	LEGEND-PLAN	PROPOSED	EXISTING	LEGEND-PLAN	PROPOSED	EXISTING	LEGEND-PROFILE

LOCATION APPROVED UNDERGROUND STRUCTURES
SUPV. U/G STRUCTURES COMMITTEE DATE
NOTE:
LOCATION OF UNDERGROUND STRUCTURES AS SHOWN ARE BASED ON THE BEST INFORMATION AVAILABLE BUT NO GUARANTEE IS GIVEN THAT ALL EXISTING UTILITIES ARE SHOWN OR THAT THE GIVEN LOCATIONS ARE EXACT. CONFIRMATION OF EXISTENCE AND EXACT LOCATION OF ALL SERVICES MUST BE OBTAINED FROM THE INDIVIDUAL UTILITIES BEFORE PROCEEDING WITH CONSTRUCTION.

B.M.	10-003		
ELEV.	234.210m		
NO.	REVISIONS	DATE	BY
3	ISSUED FOR ADDENDUM No.1	10.01.13	J.M.B.
2	ISSUED FOR TENDER	10.01.06	J.M.B.
1	SUBMITTED FOR 90% REVIEW	09.12.11	J.M.B.

Stantec Consulting Ltd.
905 Waverley Street, Winnipeg, Manitoba
Tel 204-489-5900 Fax 204-453-9012

DESIGNED BY: W.K.B. CHECKED BY: K.S.A.
DRAWN BY: J.M.B. APPROVED BY: W.K.B.

HOR. SCALE: 1:250
VERTICAL: N/A

RELEASED FOR CONSTRUCTION: _____
DATE: 09.12.15

ENGINEER'S SEAL
CONSULTANT DRAWING NO. CT-105

THE CITY OF WINNIPEG
PUBLIC WORKS DEPARTMENT
ENGINEERING DIVISION

Winnipeg

GUNN ROAD RECONSTRUCTION
CORDITE DITCH CULVERT REPLACEMENT
AT DAY STREET AND GUNN ROAD
SITE PLAN - COMPLETED PROJECT

SHEET 6 OF 15
CAD FILE DRAWING NUMBER 05170ct-105-726.dwg
CITY DRAWING NUMBER C365-10-06