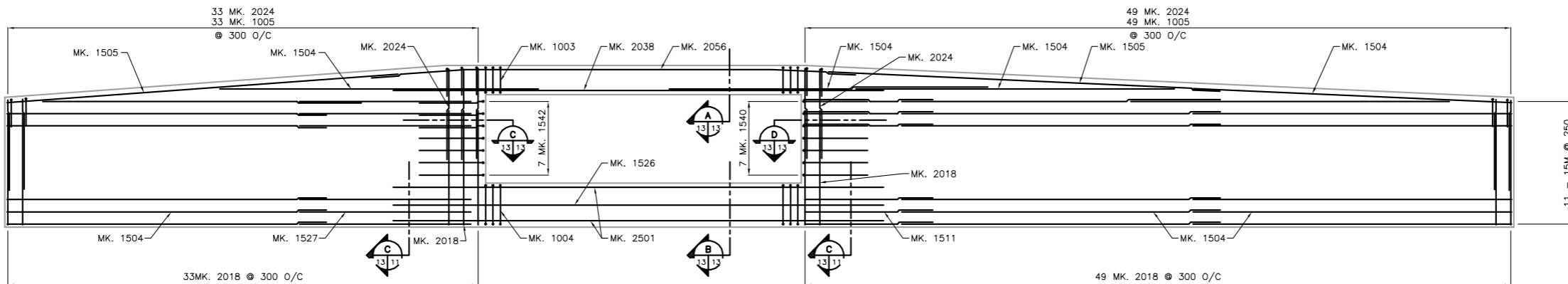


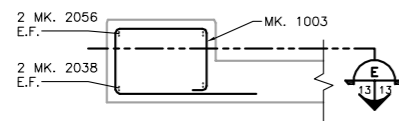
ELEVATION OF EAST HEADWALL

1:50
SHOWING REINFORCING STEEL IN INSIDE FACE

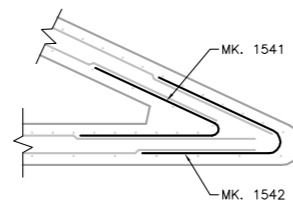


ELEVATION OF EAST HEADWALL

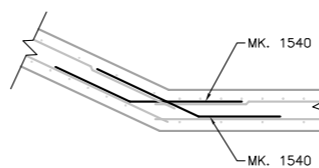
1:50
SHOWING REINFORCING STEEL IN OUTSIDE FACE



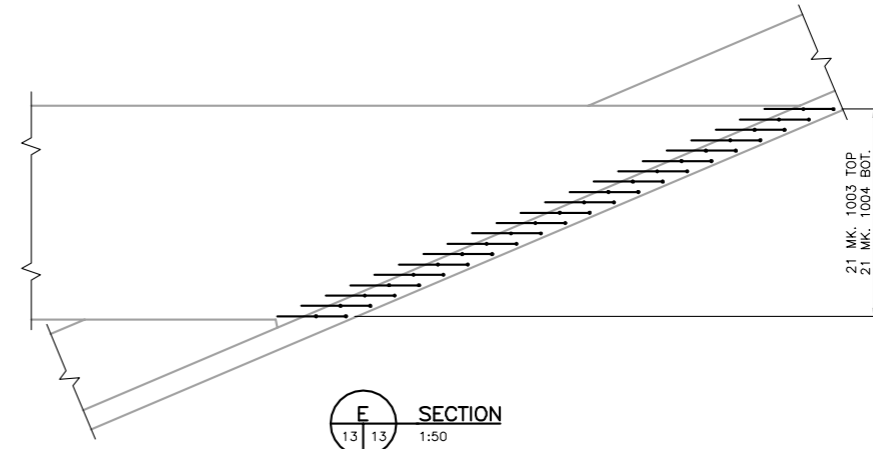
A SECTION
1:25



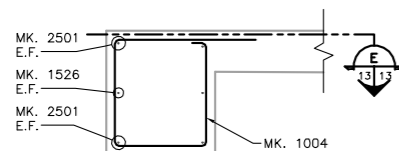
C SECTION
1:25



D SECTION
1:25



E SECTION
1:50



B SECTION
1:25

LOCATION APPROVED UNDERGROUND STRUCTURES

SUPV. U/G STRUCTURES COMMITTEE DATE

NOTE:
LOCATION OF UNDERGROUND STRUCTURES AS SHOWN ARE BASED ON THE BEST INFORMATION AVAILABLE BUT NO GUARANTEE IS GIVEN THAT ALL EXISTING UTILITIES ARE SHOWN OR THAT THE GIVEN LOCATIONS ARE EXACT. CONTRIBUTION OF EXISTENCE AND EXACT LOCATION OF ALL SERVICES MUST BE OBTAINED FROM THE INDIVIDUAL UTILITIES BEFORE PROCEEDING WITH CONSTRUCTION.

B.M. ELEV.	NO.	REVISIONS	DATE	BY
	3	ISSUED FOR ADDENDUM No.1	10.01.13	J.M.B.
	2	ISSUED FOR TENDER	10.01.06	J.M.B.
	1	SUBMITTED FOR 90% REVIEW	09.12.11	M.L.T.

Stantec Consulting Ltd.		ENGINEER'S SEAL	
905 Waverley Street, Winnipeg, Manitoba Tel 204-489-5900 Fax 204-453-9012			
DESIGNED BY M.L.T.	CHECKED BY K.S.A.		
DRAWN BY J.M.B.	APPROVED BY M.L.T.		
HOR. SCALE: VERTICAL: AS SHOWN	RELEASED FOR CONSTRUCTION:		
DATE 09.12.11	DATE		

CONSULTANT DRAWING NO. S-107
--

THE CITY OF WINNIPEG
PUBLIC WORKS DEPARTMENT
ENGINEERING DIVISION

WINNIPEG

GUNN ROAD RECONSTRUCTION
CORDITE DITCH CULVERT REPLACEMENT
AT DAY STREET AND GUNN ROAD
REINFORCING DETAILS - SHEET 5 OF 6

SHEET **13** OF **15**
CAD FILE DRAWING NUMBER
051705-101-726.dwg
CITY DRAWING NUMBER
C365-10-13

APEGM
Certificate of Authorization
Stantec Consulting Ltd.
No. 1301 Date: _____