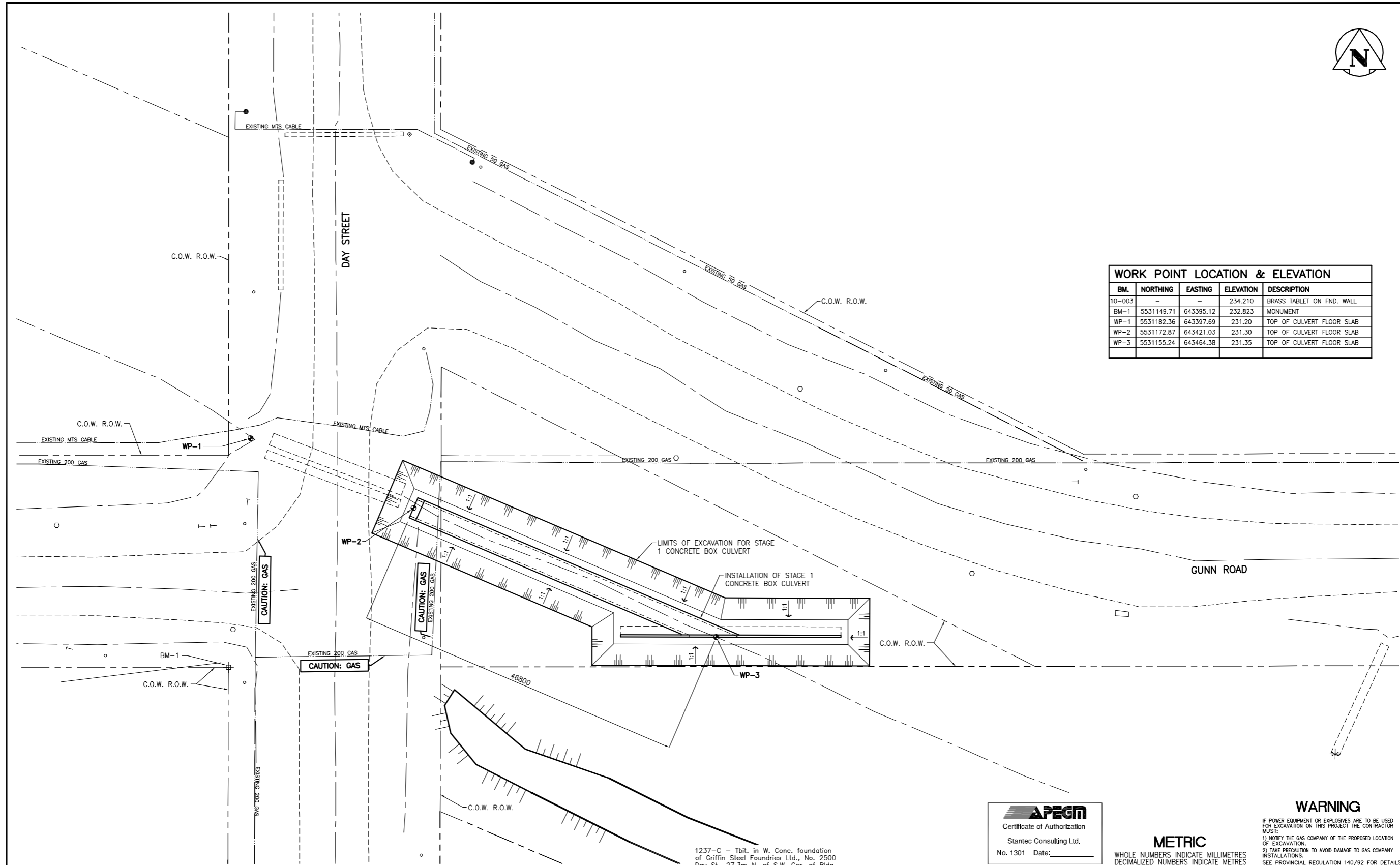




WORK POINT LOCATION & ELEVATION				
BM.	NORTHING	EASTING	ELEVATION	DESCRIPTION
10-003	-	-	234.210	BRASS TABLET ON FND. WALL
BM-1	5531149.71	643395.12	232.823	MONUMENT
WP-1	5531182.36	643397.69	231.20	TOP OF CULVERT FLOOR SLAB
WP-2	5531172.87	643421.03	231.30	TOP OF CULVERT FLOOR SLAB
WP-3	5531155.24	643464.38	231.35	TOP OF CULVERT FLOOR SLAB



APEGM
Certificate of Authorization
Stantec Consulting Ltd.
No. 1301 Date: _____

WARNING
IF POWER EQUIPMENT OR EXPLOSIVES ARE TO BE USED FOR EXCAVATION ON THIS PROJECT THE CONTRACTOR MUST:
1) NOTIFY THE GAS COMPANY OF THE PROPOSED LOCATION OF EXCAVATION.
2) TAKE PRECAUTION TO AVOID DAMAGE TO GAS COMPANY INSTALLATIONS.
SEE PROVINCIAL REGULATION 140/92 FOR DETAILS

METRIC
WHOLE NUMBERS INDICATE MILLIMETRES
DECIMALIZED NUMBERS INDICATE METRES

150 MM	150 MM	150 MM	150 MM	150 MM	150 MM	150 MM	150 MM	150 MM
WATERMAIN	WATERMAIN	HYDRO	HYDRO	WATERMAIN	WATERMAIN	WATERMAIN	WATERMAIN	WATERMAIN
HYDRANT	HYDRANT	M.T.S.	M.T.S.	HYDRANT, VALVE	HYDRANT, VALVE	LAND DRAINAGE SEWER	LAND DRAINAGE SEWER	LAND DRAINAGE SEWER
VALVE	VALVE	CONCRETE	CONCRETE	LAND DRAINAGE SEWER	LAND DRAINAGE SEWER	WASTE WATER SEWER	WASTE WATER SEWER	WASTE WATER SEWER
300 LBS	300 LBS	ASPHALT	ASPHALT	WASTE WATER SEWER	WASTE WATER SEWER	250 WWS	250 WWS	250 WWS
250 WWS	250 WWS	SIDEWALK	SIDEWALK	PROPERTY LINE	PROPERTY LINE	NORTH OR WEST GUTTER	NORTH OR WEST GUTTER	NORTH OR WEST GUTTER
MANHOLE	MANHOLE	SURVEY BAR	SURVEY BAR	DITCH	DITCH	SOUTH OR EAST GUTTER	SOUTH OR EAST GUTTER	SOUTH OR EAST GUTTER
CATCH BASIN	CATCH BASIN	ELEVATION	ELEVATION	SIDEWALK RAMP	SIDEWALK RAMP	NORTH OR WEST DITCH	NORTH OR WEST DITCH	NORTH OR WEST DITCH
CURB INLET	CURB INLET	(31.334)	(31.334)	SOUTH OR EAST DITCH	SOUTH OR EAST DITCH	LEGEND-PLAN	PROPOSED	EXISTING
JUNCTIONS	JUNCTIONS					LEGEND-PROFILE	PROPOSED	EXISTING
CULVERT	CULVERT							
GAS	GAS							
EXISTING	LEGEND-PLAN	PROPOSED	EXISTING	LEGEND-PLAN	PROPOSED	EXISTING	LEGEND-PROFILE	PROPOSED

LOCATION APPROVED UNDERGROUND STRUCTURES

SUPV. U/G STRUCTURES DATE COMMITTEE

NOTE:
LOCATION OF UNDERGROUND STRUCTURES AS SHOWN ARE BASED ON THE BEST INFORMATION AVAILABLE BUT NO GUARANTEE IS GIVEN THAT ALL EXISTING UTILITIES ARE SHOWN OR THAT THE GIVEN LOCATIONS ARE EXACT. CONFIRMATION OF EXISTENCE AND EXACT LOCATION OF ALL SERVICES MUST BE OBTAINED FROM THE INDIVIDUAL UTILITIES BEFORE PROCEEDING WITH CONSTRUCTION.

NO.	REVISIONS	DATE	BY
2	ISSUED FOR TENDER	10.01.06	J.M.B.
1	SUBMITTED FOR 90% REVIEW	09.12.11	J.M.B.

Stantec Consulting Ltd.
905 Waverley Street, Winnipeg, Manitoba
Tel 204-489-5900 Fax 204-453-9012

DESIGNED BY: W.K.B. CHECKED BY: K.S.A.
DRAWN BY: J.M.B. APPROVED BY: W.K.B.

HOR. SCALE: 1:250
VERTICAL: N/A

RELEASED FOR CONSTRUCTION: _____
DATE: 09.12.09

ENGINEER'S SEAL
CONSULTANT DRAWING NO. CT-102

THE CITY OF WINNIPEG
PUBLIC WORKS DEPARTMENT
ENGINEERING DIVISION

WINNIPEG

GUNN ROAD RECONSTRUCTION
CORDITE DITCH CULVERT REPLACEMENT
AT DAY STREET AND GUNN ROAD
SITE PLAN - PHASE I

SHEET 3 OF 15
CAD FILE DRAWING NUMBER 05170ct-102-726.dwg
CITY DRAWING NUMBER C365-10-03