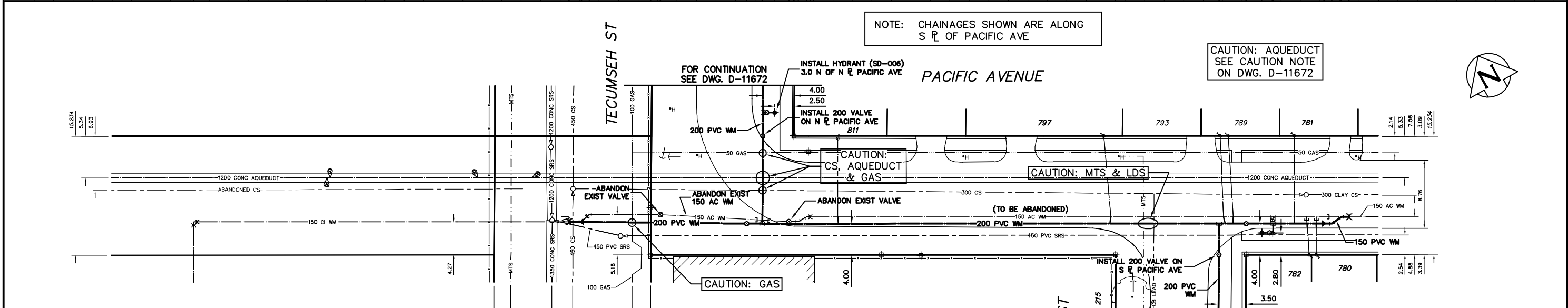


NOTE: CHAINAGES SHOWN ARE ALONG S R OF PACIFIC AVE

CAUTION: AQUEDUCT SEE CAUTION NOTE ON DWG. D-11672



**WATER SERVICE INFORMATION**

ADDRESS	SIZE(mm) & TYPE (STREET)	SIZE(mm) & TYPE (PROP)	SHORT & LONG MEASUREMENT	CORP. LOCATION	REMARKS
780 PACIFIC AVE RESIDENTIAL	20 COPPER	12 LEAD	0.83 WML HSE 9.0 EEL TECUMSEH	OPP S/C	RECONNECT SERVICE
781 PACIFIC AVE RESIDENTIAL	20 COPPER	12 LEAD	1.24 EWL HSE 6.15 EEL TECUMSEH	0.1 W OF S/C	RECONNECT SERVICE
782 PACIFIC AVE RESIDENTIAL	20 COPPER	12 COPPER	1.06 EEL HSE 8.05 EEL TECUMSEH	0.4 W OF S/C	RECONNECT SERVICE
789 PACIFIC AVE RESIDENTIAL	20 COPPER	12 COPPER	1.22 EWL HSE 2.28 WEL TECUMSEH	0.7 E OF S/C	RECONNECT SERVICE
793 PACIFIC AVE RESIDENTIAL	20 COPPER	12 COPPER	4.06 EEL HSE 3.33 WEL TECUMSEH	0.5 E OF S/C	RECONNECT SERVICE
797 PACIFIC AVE RESIDENTIAL	20 COPPER	20 LEAD	1.48 WML HSE 1.49 WML TECUMSEH	1.0 E OF S/C	RECONNECT SERVICE
811 PACIFIC AVE RESIDENTIAL	20 COPPER	20 COPPER	1.88 EWL HSE 5.59 EEL TECUMSEH	OPP S/C	RECONNECT SERVICE
215 TECUMSEH ST COMMERCIAL	-	-	-	-	NO INFORMATION AVAILABLE

\* SERVICES TO BE RENEWED TO R UPON CONFIRMATION BY THE CONTRACTOR OF EXISTING 1/2" COPPER OR LEAD SERVICE. OBTAIN APPROVAL FROM CONTRACT ADMINISTRATOR PRIOR TO RENEWAL.

**CONSTRUCTION NOTES**

1. EXPOSE EXISTING WATERMAIN & CONFIRM INVERTS PRIOR TO CONSTRUCTION.
2. CONFIRM LOCATION OF ALL SERVICES IN THE FIELD.
3. INSTALL WATERMAIN BY TRENCHLESS METHODS.
4. TRENCHES AND EXCAVATIONS WITHIN 1 METRE OF A PAVED AREA INCLUDING SIDEWALKS SHALL BE CLASS 3 BACKFILL.
5. ALL MATERIALS SHALL CONFORM TO THE CITY OF WINNIPEG STANDARD CONSTRUCTION SPECIFICATIONS.
6. MINIMUM COVER TO TOP OF WATERMAIN SHALL BE 2.4 m.
7. REPLACE ALL EXISTING LEAD SERVICES FROM PROPOSED WATERMAIN TO E.
8. NOTIFY ALL AFFECTED RESIDENTS AND BUSINESSES 24 HOURS IN ADVANCE OF ANY WATER SHUTDOWNS OR DISRUPTION OF SERVICE.

**METRIC**

WHOLE NUMBERS INDICATE MILLIMETRES  
DECIMALIZED NUMBERS INDICATE METRES

NOTE: ALL VALVES TO BE INSTALLED COUNTERCLOCKWISE TO CLOSE

**WARNING**

IF POWER EQUIPMENT OR EXPLOSIVES ARE TO BE USED FOR EXCAVATION ON THIS PROJECT THE CONTRACTOR MUST:  
1) NOTIFY THE GAS COMPANY OF THE PROPOSED LOCATION OF EXCAVATION.  
2) TAKE PRECAUTION TO AVOID DAMAGE TO GAS COMPANY INSTALLATIONS.  
SEE PROVINCIAL REGULATION 210/72 FOR DETAILS



200 WM	WATERMAIN	200 WM	SL, HYDRO	150 WM	WATERMAIN	150 WM
+	HYDRANT	+	MTS	+	HYDRANT	+
⊙	VALVE	⊙	TRAFFIC SIGNALS	⊙	VALVE	⊙
525 LDS	LAND DRAINAGE SEWER	525 LDS	GAS	50 GAS	LAND DRAINAGE SEWER	300 LDS
375 WWS	WASTEWATER SEWER	375 WWS	SURVEY BAR	250 WWS	WASTEWATER SEWER	250 WWS
○	MANHOLE	●	FENCE	⊖	PROFILE	⊖
□	CATCH BASIN	■	POLE - HYDRO, MTS	⊖	GROUND ABOVE PIPE	⊖
▽	CURB INLET	▽	CURB STOP	⊖	E DITCH (NORTH & WEST)	⊖
∇	REDUCER	∇	GUY ANCHOR	⊖	E DITCH (SOUTH & EAST)	⊖
X	COUPLER	X	LIGHT STANDARD	⊖	GUTTER (NORTH & EAST)	⊖
⊖	ANODE	⊖	TREE	⊖	GUTTER (SOUTH & EAST)	⊖
EXISTING	LEGEND-PLAN	PROPOSED	EXISTING	LEGEND-PLAN	PROPOSED	EXISTING
EXISTING	LEGEND-PROFILE	PROPOSED	EXISTING	LEGEND-PROFILE	PROPOSED	EXISTING

LOCATION APPROVED	B.M. ELEV.	FIELD BOOK #:
UNDERGROUND STRUCTURES		
SUPV. U/G STRUCTURES COMMITTEE		
DATE		

NO.	REVISIONS	DATE	BY

**CITY OF WINNIPEG WATER AND WASTE ENGINEERING DIVISION**

DESIGNED BY: SC  
CHECKED BY: SC

DRAWN BY: C/JH  
APPROVED BY: KZ

HOR. SCALE: 1:250  
VERTICAL: 1:50

RELEASED FOR CONSTRUCTION

DATE: 2009 02 12

ENGINEER'S SEAL

ORIGINAL SIGNED BY  
**S.R.J. COUNROYER**  
09/02/12

BID OPPORTUNITY 94-2009  
FILENAME: D-11673.dwg  
PLOT DATE: 2009 02 12

**THE CITY OF WINNIPEG WATER AND WASTE DEPARTMENT**

2009 WATERMAIN RENEWALS  
CONTRACT 2  
**PACIFIC AVENUE**  
TECUMSEH STREET TO  
TECUMSEH STREET

SHEET 9 OF 10  
CITY DRAWING NUMBER  
**D-11673**