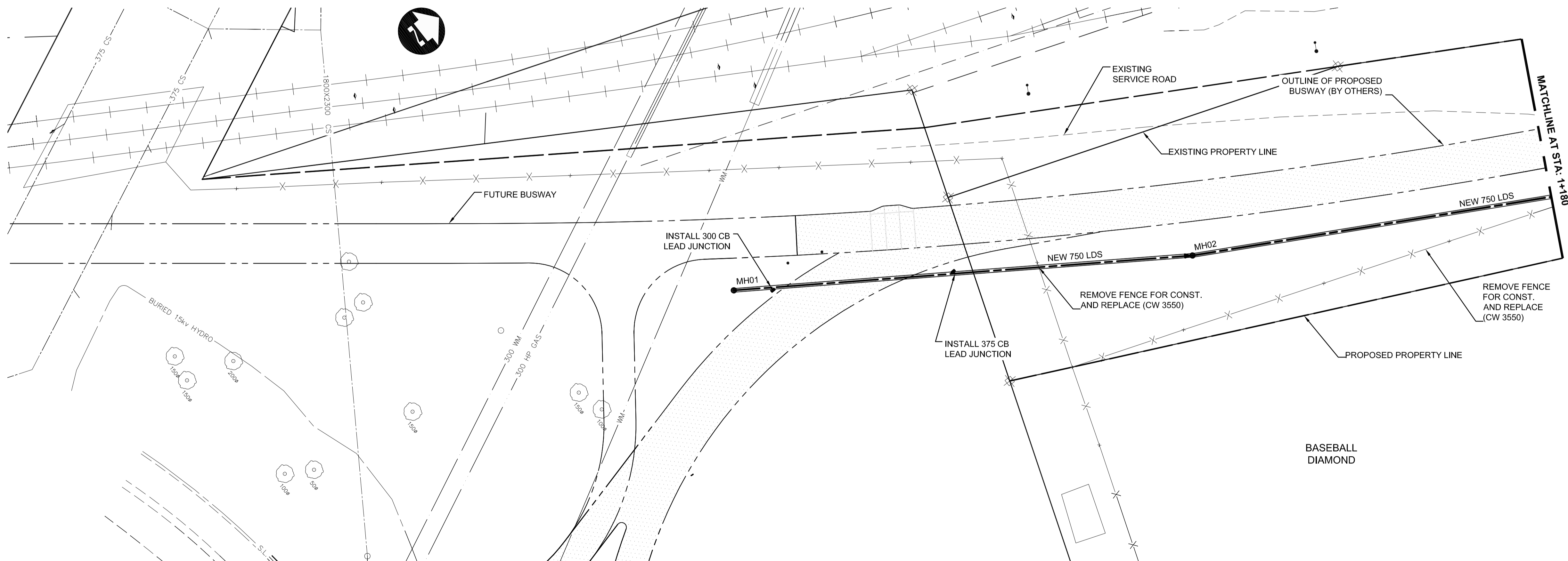


MATCHLINE AT STA: 1+180

**CONSTRUCTION NOTES:**

- SEWER INSTALLATION BY TRENCHLESS OR OPEN CUT METHODS EXCEPT WHERE TRENCHLESS INSTALLATION IS SPECIFICALLY INDICATED.
- LOCATION OF EXISTING UTILITIES TO BE CONFIRMED IN THE FIELD BY THE CONTRACTOR.
- CONTRACTOR TO PLUG ALL CB LEAD JUNCTIONS AND TO RECORD COORDINATES OF THEIR LOCATIONS.
- ALL ABANDONED BUILDING FOUNDATIONS IN THE PATH OF LDS CONSTRUCTION TO BE REMOVED BY CONTRACTOR.
- CONTRACTOR TO PLUG ANY ABANDONED PIPES THAT ARE BROKEN DURING CONSTRUCTION.
- FUTURE SWALE ALONG WEST SIDE OF PROPOSED BUSWAY TO BE CONSTRUCTED BY OTHERS.
- OPEN-CUT EXCAVATIONS TO BE SUPPORTED STRAIGHT WALLED SHAFTS SUPPORTED BY SHORING CAGES.
- CONTRACTOR TO RESTORE CN SERVICE ROAD TO EQUAL OR BETTER THAN ORIGINAL CONDITION.
- BASEBALL FIELD TO BE RESODDED AFTER CONSTRUCTION.



MATCHLINE AT STA: 1+180

**METRIC**

WHOLE NUMBERS INDICATE MILLIMETRES  
DECIMALIZED NUMBERS INDICATE METRES.

**WARNING**

IF POWER EQUIPMENT OR EXPLOSIVES ARE TO BE USED FOR EXCAVATION ON THIS PROJECT THE CONTRACTOR MUST:

- NOTIFY THE GAS COMPANY OF THE PROPOSED LOCATION OF EXCAVATION.
- TAKE PRECAUTION TO AVOID DAMAGE TO GAS COMPANY INSTALLATIONS. SEE PROVINCIAL REGULATION 210/72 FOR DETAILS.

NOTE: CHAINAGES SHOWN ALONG CL OF PIPE.

COORDINATES		RIM ELEV.	#	STATION	INVERT				
NORTHING	EASTING				N	S	E	W	
5524130.016	632909.153	232.739	MH01	1+010.00	228.940				
5524206.683	632962.425	232.668	MH02	1+105.00	228.720	228.750			

NOTE: ALL COORDINATES SHOWN ON DRAWINGS ARE NAD 83 UTM COMBINED SCALE FACTOR TO OBTAIN GROUND DISTANCES 0.9997688

**APEGM**  
Certificate of Authorization  
**Dillon Consulting Limited (MB)**  
No. 1789 Date: 25/02/09

LOCATION APPROVED UNDERGROUND STRUCTURES  
ORIGINAL SIGNED BY DERRICK SAEDEL 23/02/09  
SUPV. U/G STRUCTURES COMMITTEE DATE

NOTE:  
LOCATION OF UNDERGROUND STRUCTURES AS SHOWN ARE BASED ON THE BEST INFORMATION AVAILABLE, BUT NO GUARANTEE IS GIVEN THAT ALL EXISTING UTILITIES ARE SHOWN OR THAT THE GIVEN LOCATIONS ARE EXACT. CONFIRMATION OF EXISTENCE AND EXACT LOCATION OF ALL SERVICES MUST BE OBTAINED FROM THE INDIVIDUAL UTILITIES BEFORE PROCEEDING WITH CONSTRUCTION.

B.M. 654265 (633392.694, 5525026.192) ELEV. 232.518	DESIGNED BY C.L.P.
	DRAWN BY A.J.P.
	CHECKED BY ORIGINAL SIGNED BY SHANE COOPER
	APPROVED BY ORIGINAL SIGNED BY DAVE KRAHN
2 ISSUED FOR TENDER 25/02/09 S.C.C.	HOR. SCALE 1 : 500
1 ISSUED FOR 95% REVIEW 02/02/09 C.L.P.	VERTICAL 1 : 50
NO. REVISIONS	DATE BY DATE 25-02-09

**DILLON CONSULTING**

RELEASSED FOR CONSTRUCTION  
ORIGINAL SIGNED BY RANDY FINGAS

ENGINEER'S SEAL  
PROVINCE OF MANITOBA  
D.P. KRAHN  
25/02/09  
Member 4226  
REGISTERED PROFESSIONAL ENGINEER

CONSULTANT PROJECT NO.  
088813

**THE CITY OF WINNIPEG TRANSIT DEPARTMENT**

SOUTHWEST RAPID TRANSIT CORRIDOR - STAGE 1  
LAND DRAINAGE CONSTRUCTION & ASSOCIATED WORKS

FORT ROUGE YARDS - PLAN & PROFILE - STA. 1+010 TO 1+180

CITY DRAWING NUMBER LD-5282  
SHEET 5 OF 15  
CONSULTANT DRAWING NUMBER C1-U4001

G:\CAD\088813\Contract\Contract 1-LDS-Jubilee to Osborne\C1-410-LDS-Busway.dwg