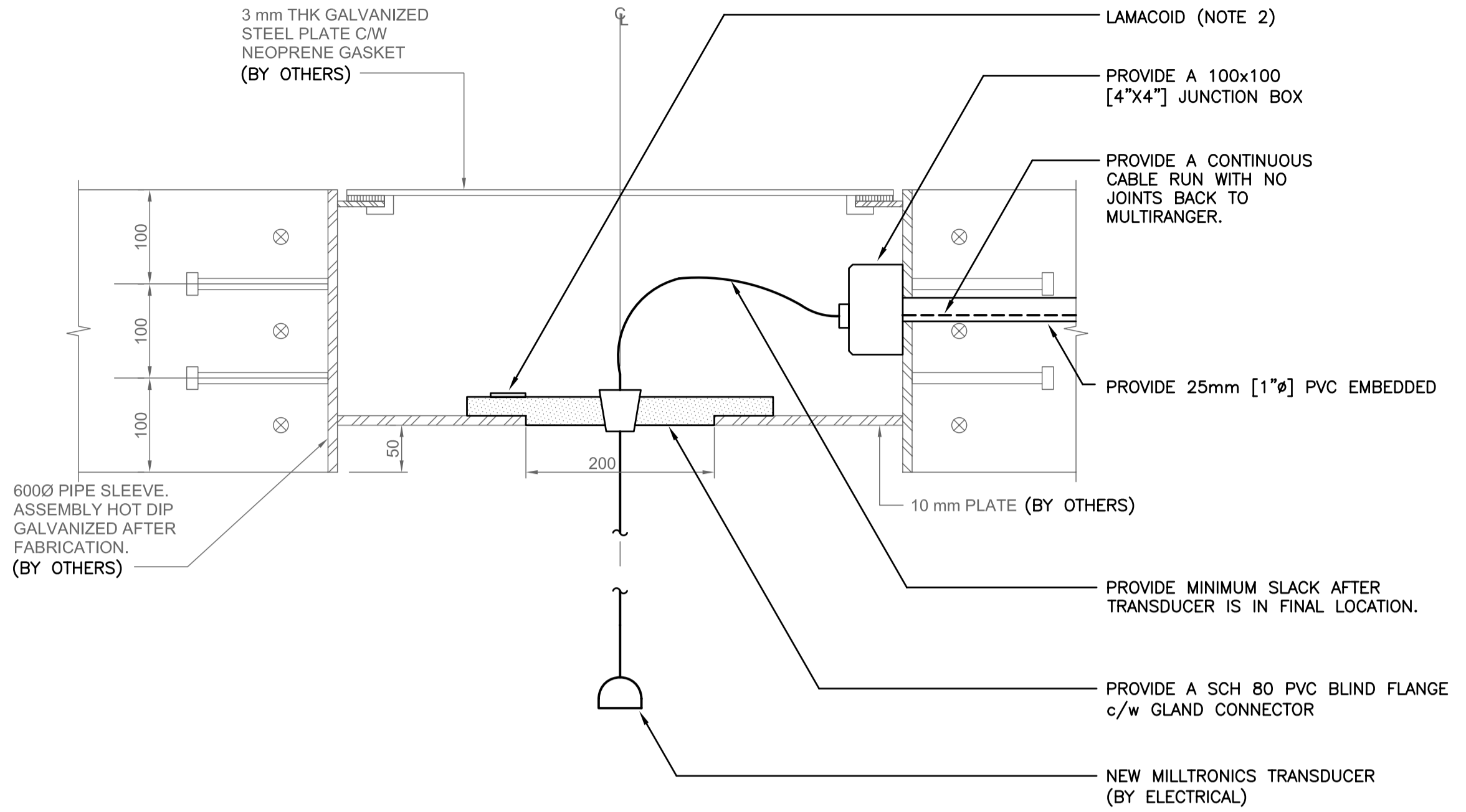


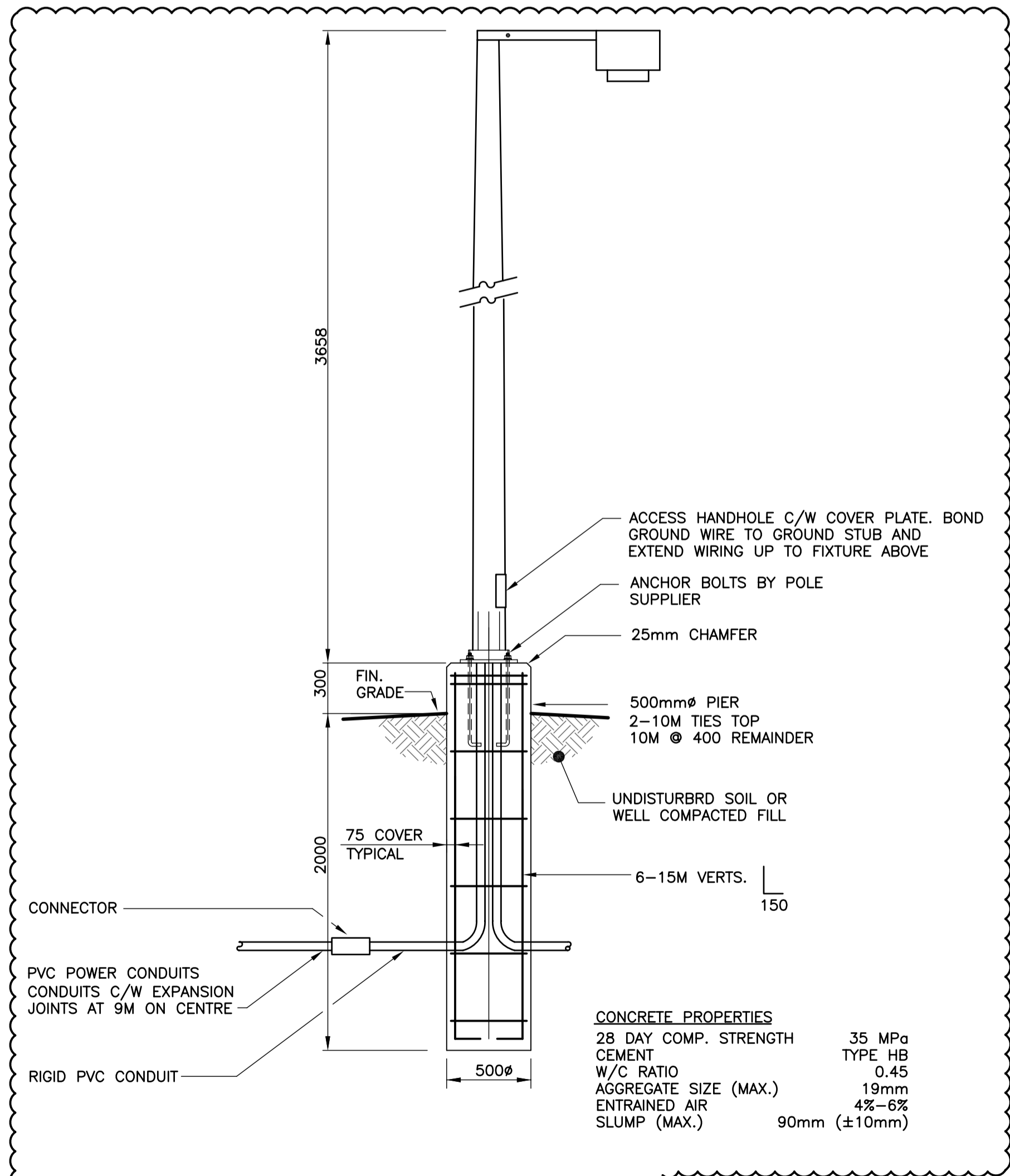
SUPPLY: 240V 1Ø 3W MAINS AMPACITY: 100 INCOMING: <input checked="" type="checkbox"/> BREAKER <input type="checkbox"/> LUGS MAIN BREAKER REQUIRED: <input checked="" type="checkbox"/> YES <input type="checkbox"/> NO MAIN BREAKER AMPS: 100 BUS MATERIAL: <input checked="" type="checkbox"/> COPPER <input type="checkbox"/> ALUMINUM BUS AND BREAKER RATING: 14kA		NAME PLATE:  <b>PANEL 'A'</b>		LOCATION: ELECTRICAL ROOM MOUNTING: <input checked="" type="checkbox"/> SURFACE <input type="checkbox"/> FLUSH MANUFACTURER: MODEL NO: BREAKER: <input type="checkbox"/> PLUG-IN <input checked="" type="checkbox"/> BOLT-ON TVSS: <input type="checkbox"/> YES <input checked="" type="checkbox"/> NO SERVICE ENTRANCE RATED: <input type="checkbox"/> YES <input checked="" type="checkbox"/> NO									
REV	CCT	VA	P	BKR	L1	L2	BKR	P	VA	RECEPTACLE	CCT	REV	
B	1	276	1	15			15	1	500	RECEPTACLE	2	B	
B	3	730	1	15			15	1	500	RECEPTACLE - OUTDOOR	4	B	
B	5	500	1	15			15	1	150	EXHAUST FAN - EF-1	6	B	
B	7	696	1	15			30	2	3500	TWISTLOCK - RECEPTACLE	8	B	
B	9						30	1	2000	TWISTLOCK - RECEPTACLE	10	B	
	11										12	B	
	13										14	B	
	15										16	B	
	17										18	B	
	19										20	B	
	21										22	B	
	23										24	B	
		LOAD 'L1'		LOAD 'L2'									
		3,176		5,676									



**A** ULTRASONIC TRANSDUCER DETAIL  
SCALE: N.T.S.

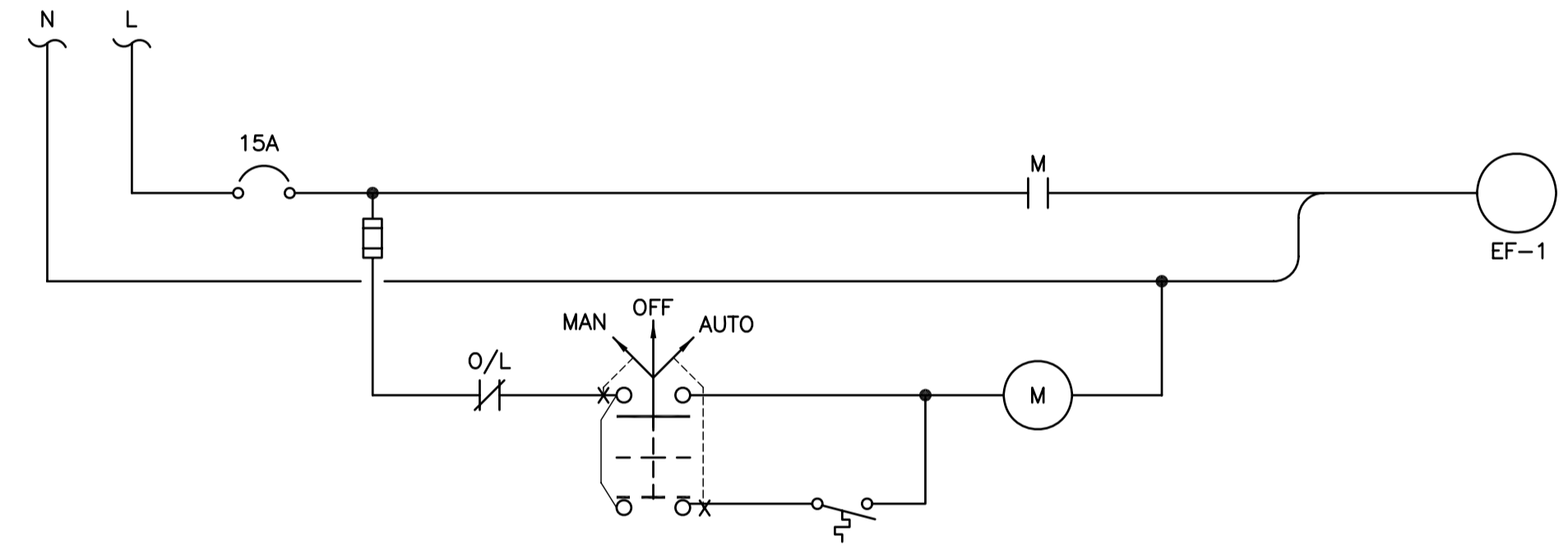
- NOTES:**
1. PROVIDE ONE (1) LIGHT FIXTURE c/w POLE ON THE NORTH SIDE OF THE NEW DRIVE AREA.
  2. PROVIDE LAMACOID LABEL. LABEL SHALL SHOW THE FINAL CABLE DIMENSION BETWEEN THE BLIND FLANGE AND THE TRANSDUCER. LAMACOID SHALL BE PERMANENTLY FASTENED TO THE BLIND FLANGE.

TYPE	DESCRIPTION	VOLTAGE	LAMPS	APPROVED MANUFACTURERS
A	CHAIN SUSPENDED FLUORESCENT INDUSTRIAL LUMINAIRE c/w SLOTTED REFLECTOR AND ELECTRONIC BALLAST.	120V	2-32W T8 4100°K	LITHONIA LIGHTING: LA 232 120V GEB10IS
B	HPS WALLPACK CUT-OFF. HIGH POWER FACTOR BALLAST, CAST BODY POLYCARBONATE LENS c/w PHOTOCELL CONTROL.	120V	1-70W HPS	LITHONIA LIGHTING: TWAC 70S 120 XHP CSA RK1 PEB1 CSA
C	3.66m [12'] STEEL POLE WITH A HORIZONTAL STANCHION, HIGH POWER FACTOR HPS c/w PHOTOCELL CONTROL	120V	1-400W HPS	LITHONIA LIGHTING: KSF2250S-R3120-SP04-LPI-CSA-PE1 c/w POLE #SSS124CDB (NOTE 1)

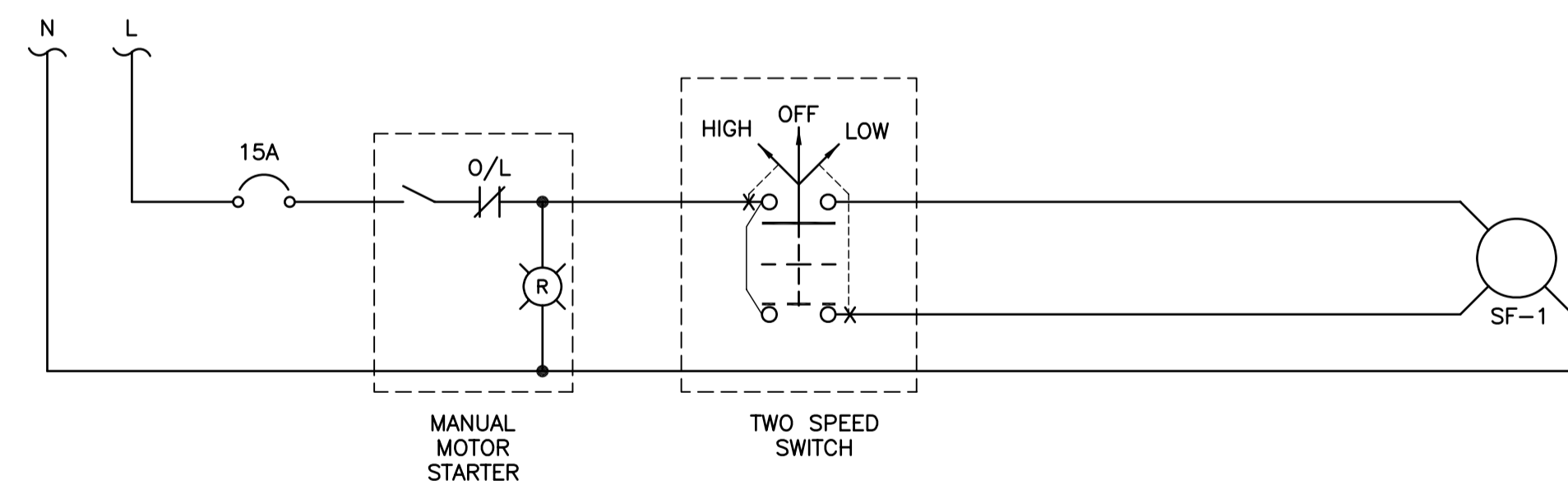


**D** LIGHT POLE DETAIL  
SCALE: N.T.S.

**APECM**  
Certificate of Authorization  
KGS Group  
No. 245 Date: 14/04/09



**B** EXHAUST FAN EF-1 STARTER CIRCUIT  
SCALE: N.T.S.



**C** SUPPLY FAN SF-1 STARTER CIRCUIT  
SCALE: N.T.S.

LOCATION APPROVED UNDERGROUND STRUCTURES ORIGINAL SIGNED BY DERRICK SAEDAL SUPV. U/G STRUCTURES COMMITTEE DATE	B.M. ELEV. BM ELEV.	DESIGNED BY JLL DRAWN BY GCN CHECKED BY ORIGINAL SIGNED BY R.E. WILLMS APPROVED BY ORIGINAL SIGNED BY J.L. LALONDE	ENGINEER'S SEAL THE ORIGINAL ISSUE REV. 0 WAS STAMPED, DATED AND SIGNED BY R.LALONDE, P.ENG. ON 25/03/09	<b>THE CITY OF WINNIPEG</b> TRANSIT DEPARTMENT
NOTE: LOCATION OF UNDERGROUND STRUCTURES AS SHOWN ARE BASED ON THE BEST INFORMATION AVAILABLE BUT NO GUARANTEE IS GIVEN THAT ALL EXISTING UTILITIES ARE SHOWN OR THAT THE GIVEN LOCATIONS ARE EXACT. CONFIRMATION OF EXISTENCE AND EXACT LOCATION OF ALL SERVICES MUST BE OBTAINED FROM THE INDIVIDUAL UTILITIES BEFORE PROCEEDING WITH CONSTRUCTION.	1 ISSUED FOR ADDENDUM No.1 14/04/09 JLL 0 ISSUED FOR TENDER 25/03/09 JLL	HOR. SCALE VERTICAL 2009-03-18	RELEASED FOR CONSTRUCTION ORIGINAL SIGNED BY RANDY FINGAS CONSULTANT PROJECT NO. 08-0163-02	SOUTHWEST RAPID TRANSIT CORRIDOR - STAGE 1 LAND DRAINAGE PUMPING STATION & ASSOCIATED WORKS ELECTRICAL DETAILS & SCHEDULES
				CITY DRAWING NUMBER LD-5322 SHEET 23 OF 25 CONSULTANT DRAWING NUMBER C2-B2206-T

P:\Projects\2008\08-0163-02\Doc.Control\Issued\SOURCE\dwgs\96-2009\_Drawing\_LD-5322-R1.dwg