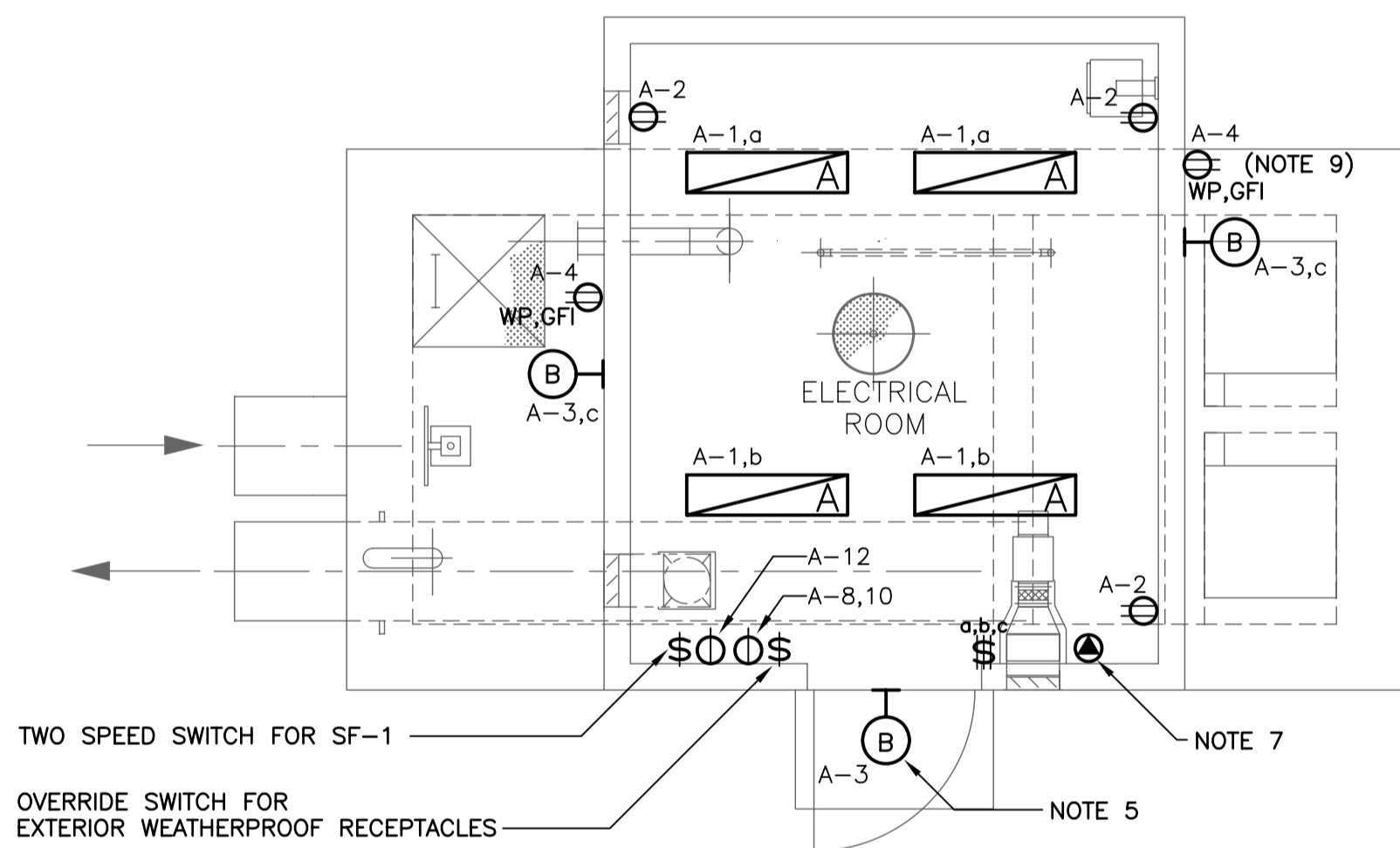
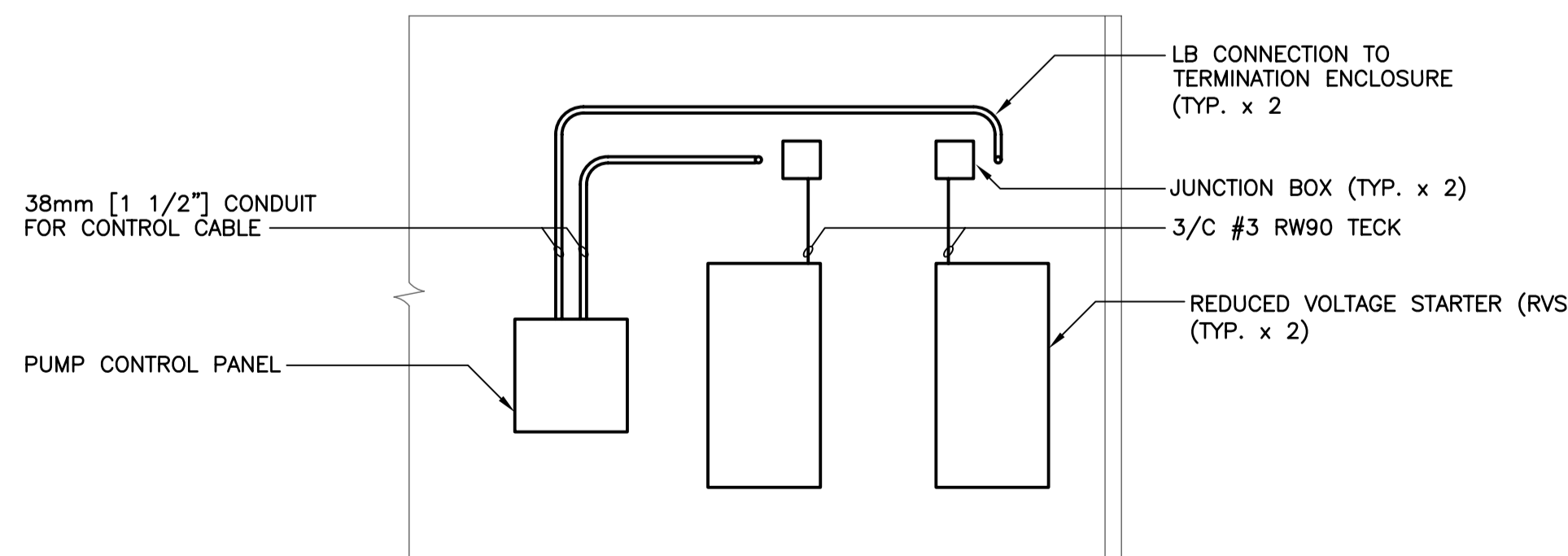


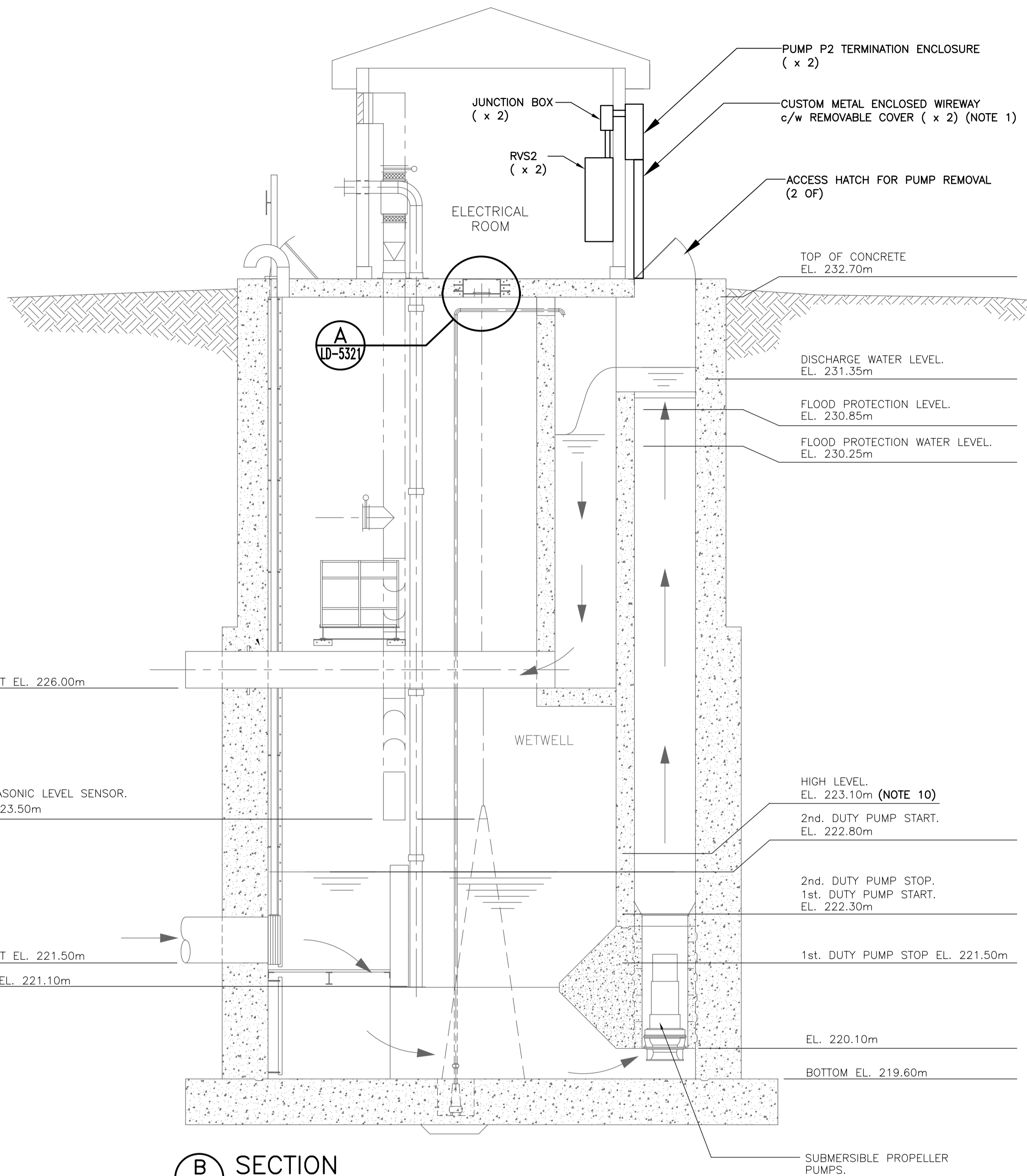
1 EQUIPMENT PLAN AT EL. 232.70m
SCALE: 1:50



2 POWER & LIGHTING PLAN AT EL. 232.70m
SCALE: 1:50



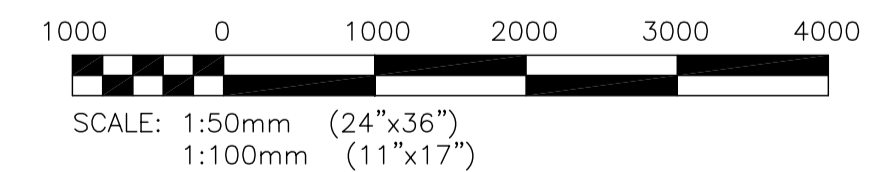
A ELEVATION
SCALE: N.T.S.



B SECTION
SCALE: 1:50

NOTES:

1. PROVIDE A CUSTOM WIREWAY FOR ROUTING OF PUMP CABLES FROM WET WELL TO TERMINATION ENCLOSURE. WIREWAY SHALL BE HOT DIP GALVANIZED OR ALUMINUM. SEE DRAWING LD-5305.
2. LEVEL SENSOR SHALL BE INSTALLED IN ACCORDANCE WITH MANUFACTURER'S RECOMMENDATIONS.
3. CITY WILL TURN OVER SCADA PANEL TO THE CONTRACTOR TO MOUNT WITHIN THE ELECTRICAL ROOM. THE CONTRACTOR SHALL BE RESPONSIBLE FOR CONNECTION OF THE CONTROL CABLING AS INDICATED ON THE PANEL AND CONNECTION OF THE PHONE LINE. THE CITY SHALL PERFORM ALL OTHER REQUIRED CONFIGURATION AND COMMISSIONING OF THE PANEL.
4. ALL WIRING WITHIN THE FLOOD PUMP STATION SHALL BE RUN IN RIGID PVC CONDUIT OR TECK CABLE, UNLESS OTHERWISE NOTED.
5. EXTERIOR LIGHT FIXTURE AT MANDOOR SHALL BE ON INTEGRAL PHOTOCELL CONTROL ONLY.
6. PROVIDE OUTDOOR VANDAL RESISTANT METERING ENCLOSURE TO MANITOBA HYDRO SPECIFICATIONS.
7. PROVIDE A CROUSE-HINDS 'AR-642', 60A, 3P, 4W WELDING RECEPTACLE - NO SUBSTITUTES.
8. PROVIDE A HAND-OFF-AUTO COMBINATION STARTER FOR THE EXHAUST FAN.
9. EXTERIOR RECEPTACLES SHALL BE SWITCHED FROM INSIDE OF THE ELECTRICAL ROOM. TYPICAL FOR TWO LOCATIONS.
10. FLOAT BALL TO BE MOUNTED NEAR WETWELL LADDER.



METRIC
WHOLE NUMBERS INDICATE MILLIMETRES
DECIMALIZED NUMBERS INDICATE METRES

LOCATION APPROVED UNDERGROUND STRUCTURES ORIGINAL SIGNED BY DERRICK SAEDAL SUPV. U/G STRUCTURES COMMITTEE DATE	B.M. ELEV. B.M. ELEV.	DESIGNED BY JLL DRAWN BY GCN CHECKED BY ORIGINAL SIGNED BY R.E. WILLMS APPROVED BY ORIGINAL SIGNED BY J.L. LALONDE HOR. SCALE VERTICAL DATE 2009-03-19	KGS GROUP CONSULTING ENGINEERS	ENGINEER'S SEAL R. LALONDE Member 32345 REGISTERED PROFESSIONAL ENGINEER	THE CITY OF WINNIPEG TRANSIT DEPARTMENT SOUTHWEST RAPID TRANSIT CORRIDOR - STAGE 1 LAND DRAINAGE PUMPING STATION & ASSOCIATED WORKS ELECTRICAL FLOOR PLANS AND SECTION	CITY DRAWING NUMBER LD-5316 SHEET 17 OF 25 CONSULTANT DRAWING NUMBER C2-B2200-T
APEGM Certificate of Authorization KGS Group No. 245 Date: 25/03/09		RELEASED FOR CONSTRUCTION ORIGINAL SIGNED BY RANDY FINGAS DATE 08-0163-02		CONSULTANT PROJECT NO. 08-0163-02		

P:\Projects\2008\08-0163-02\Doc.Control\Issued\SOURCE\dwgs\2009-03-27_Issued to Mat Mgmt (Elec. Signatures)\96-2009_Drawing_LD-5316-R0.dwg