

- CONSTRUCTION NOTES:**
- CONTRACTOR SHALL TAKE PRECAUTIONARY STEPS TO AVOID DAMAGE FROM CONSTRUCTION ACTIVITIES TO EXISTING BOULEVARDS AND TREES WITHIN THE LIMITS OF CONSTRUCTION.
  - LOCATION OF EXISTING SERVICES ARE TO BE CONFIRMED IN THE FIELD BY THE CONTRACTOR.
  - TIE-INS TO BE VERIFIED IN THE FIELD BY THE CONTRACT ADMINISTRATOR.
  - LIMITS OF SIDEWALK RENEWALS TO BE FINALIZED IN THE FIELD BY THE CONTRACT ADMINISTRATOR.
  - BOULEVARD REPLACEMENT TO BE FINALIZED IN THE FIELD BY THE CONTRACT ADMINISTRATOR.
  - BASE LINE ALONG NORTHBOUND WEST GUTTER.
  - FOR ADJUSTMENTS AND REMOVALS SEE PAGES 5 TO 10 OF 64.
  - CB LEADS TO BE INSTALLED AT MIN. 1.0% SLOPE OR AS DIRECTED BY CONTRACT ADMINISTRATOR.
  - REMOVE EXISTING FENCE AND PLACE AS TEMPORARY FENCE TO PREVENT ACCESS TO ON RAIL.

**METRIC**  
WHOLE NUMBERS INDICATE MILLIMETRES  
DECIMALIZED NUMBERS INDICATE METRES.

**WARNING**  
IF POWER EQUIPMENT OR EXPLOSIVES ARE TO BE USED FOR EXCAVATION ON THIS PROJECT THE CONTRACTOR MUST:

- NOTIFY THE GAS COMPANY OF THE PROPOSED LOCATION OF EXCAVATION.
- TAKE PRECAUTION TO AVOID DAMAGE TO GAS COMPANY INSTALLATIONS. SEE PROVINCIAL REGULATION 210/72 FOR DETAILS.

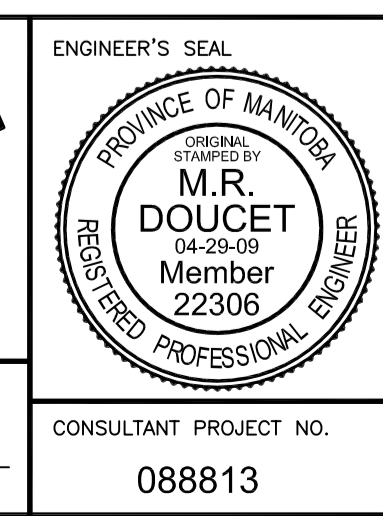
#	COORDINATES	RIM ELEV.	SUMP ELEV.	STATION	PIPE LEAD	LEAD INV.	INV. AT MAIN
CB01	5526374.992 633571.655	231.788	229.388	12+318.06	13.8m - 250mm	229.988	225.950
CB02	5526396.617 633584.713	231.576	229.226	12+339.94	2.0m - 250mm	229.826	225.990
CB03	5526397.324 633586.008	231.577	229.227	12+341.42	2.0m - 250mm	229.827	225.995
CB04	5526424.896 633623.612	231.908	229.558	12+388.21	3.4m - 250mm	230.158	226.216

NOTE: ALL COORDINATES SHOWN ON DRAWINGS ARE NAD 83 UTM COMBINED SCALE FACTOR TO OBTAIN GROUND DISTANCES 0.9997688



LOCATION UNDERGROUND	APPROVED STRUCTURES	B.M. 654265 (633392.694, 5525026.192) ELEV. 232.518
SUPY. U/G STRUCTURES COMMITTEE	DATE	
NOTE: LOCATION OF UNDERGROUND STRUCTURES AS SHOWN ARE BASED ON THE BEST INFORMATION AVAILABLE, BUT NO GUARANTEE IS GIVEN THAT ALL EXISTING UTILITIES ARE SHOWN OR THAT THE GIVEN LOCATIONS ARE EXACT. CONFIRMATION OF EXISTENCE AND EXACT LOCATION OF ALL SERVICES MUST BE OBTAINED FROM THE INDIVIDUAL UTILITIES BEFORE PROCEEDING WITH CONSTRUCTION.		
2	ISSUED FOR TENDER	04/29/09 TJP
1	SUBMITTED FOR 95% REVIEW	02/13/09 TJP
NO.	REVISIONS	DATE BY

DESIGNED BY	MRD
DRAWN BY	MRD/TJH
CHECKED BY	ORIGINAL SIGNED BY TARAN J. PETERS
APPROVED BY	ORIGINAL SIGNED BY DAVE P. KRAHN
HOR. SCALE	1 : 250
VERTICAL	1 : 10
DATE	04/29/09



**THE CITY OF WINNIPEG TRANSIT DEPARTMENT**

Winnipeg

**SOUTHWEST RAPID TRANSIT CORRIDOR - STAGE 1 TRANSITWAY CONSTRUCTION, DONALD/HARKNESS RECONSTRUCTION & ASSOCIATED WORKS**

CITY DRAWING NUMBER: P-3299-21  
SHEET 21 OF 64  
CONSULTANT DRAWING NUMBER: C3-C3003-T

CONSULTANT PROJECT NO.: 088813

PAVING & GRADING - DONALD ST. - STA. 12+250 TO 12+400

G:\CAD\088813\Contract\Contract\_3-Donald Street\Current\Roadway\C1-401-Paving-Grading.dwg