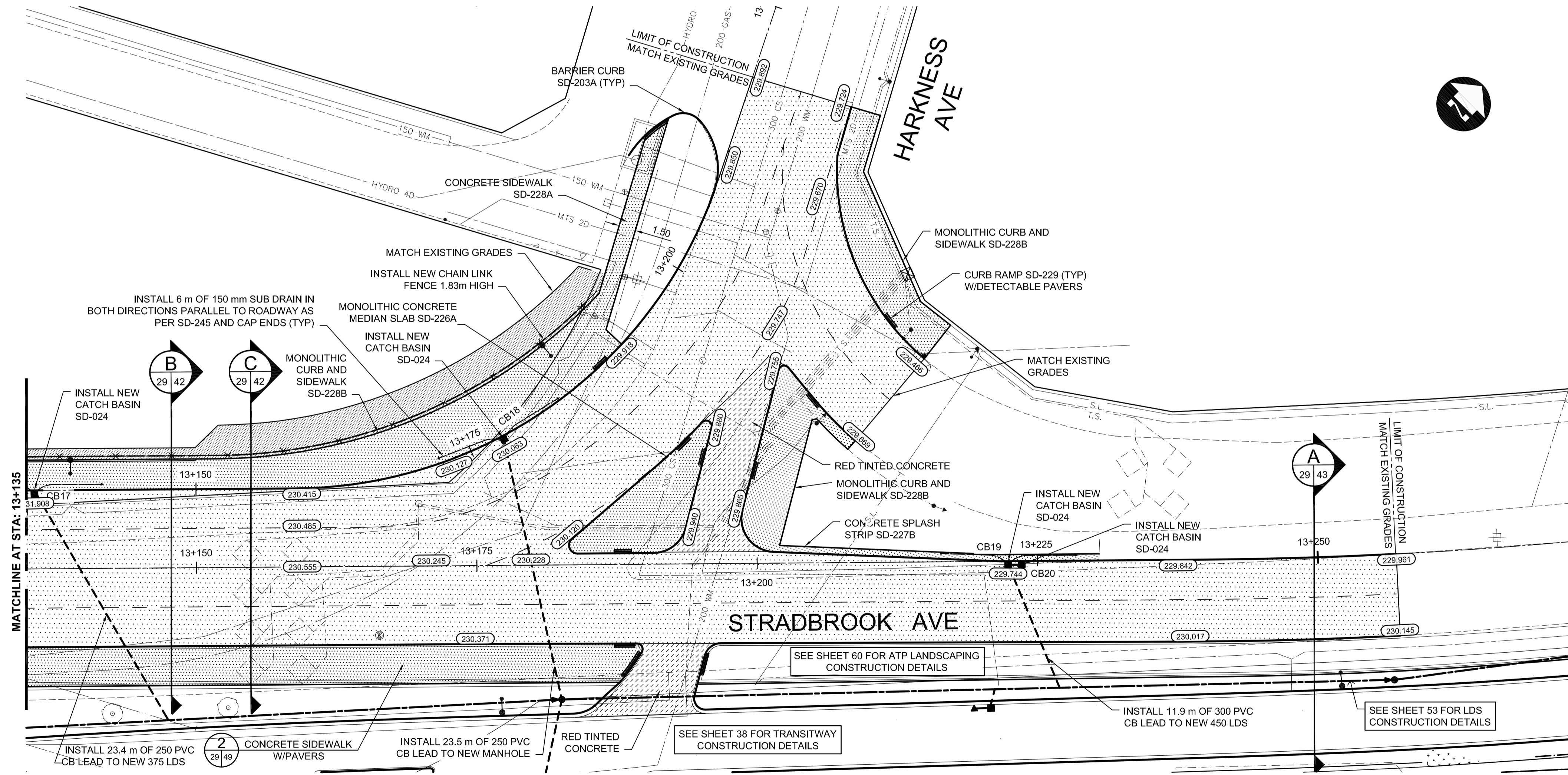
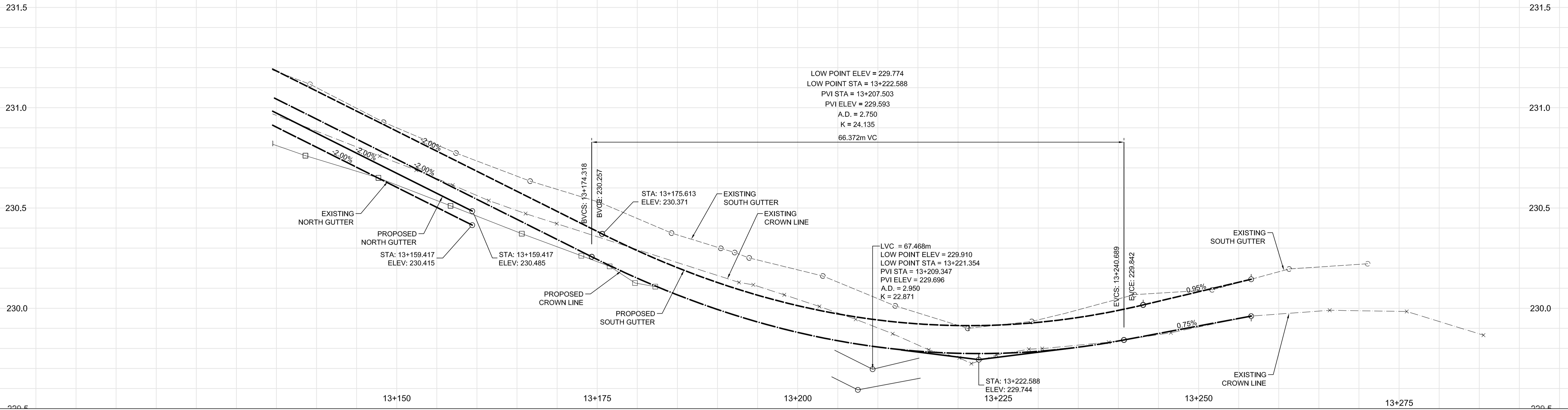


**EASTBOUND**



- CONSTRUCTION NOTES:**
- CONTRACTOR SHALL TAKE PRECAUTIONARY STEPS TO AVOID DAMAGE FROM CONSTRUCTION ACTIVITIES TO EXISTING BOULEVARDS AND TREES WITHIN THE LIMITS OF CONSTRUCTION.
  - LOCATION OF EXISTING SERVICES ARE TO BE CONFIRMED IN THE FIELD BY THE CONTRACTOR.
  - TIE-INS TO BE VERIFIED IN THE FIELD BY THE CONTRACT ADMINISTRATOR.
  - LIMITS OF SIDEWALK RENEWALS TO BE FINALIZED IN THE FIELD BY THE CONTRACT ADMINISTRATOR.
  - BOULEVARD REPLACEMENT TO BE FINALIZED IN THE FIELD BY THE CONTRACT ADMINISTRATOR.
  - BASE LINE ALONG EASTBOUND NORTH GUTTER.
  - FOR ADJUSTMENTS AND REMOVALS SEE PAGES 5 TO 10 OF 64.
  - CB LEADS TO BE INSTALLED AT MIN. 1.0% SLOPE OR AS DIRECTED BY CONTRACT ADMINISTRATOR.
  - REMOVE EXISTING FENCE AND PLACE AS TEMPORARY FENCE TO PREVENT ACCESS TO ON RAIL.

**METRIC**  
WHOLE NUMBERS INDICATE MILLIMETRES  
DECIMALIZED NUMBERS INDICATE METRES.

**WARNING**  
IF POWER EQUIPMENT OR EXPLOSIVES ARE TO BE USED FOR EXCAVATION ON THIS PROJECT THE CONTRACTOR MUST:

- NOTIFY THE GAS COMPANY OF THE PROPOSED LOCATION OF EXCAVATION.
- TAKE PRECAUTION TO AVOID DAMAGE TO GAS COMPANY INSTALLATIONS. SEE PROVINCIAL REGULATION 210/72 FOR DETAILS.

#	COORDINATES		RIM ELEV.	SUMP ELEV.	STATION	PIPE LEAD	LEAD INV.	INV. AT MAIN
	NORTHING	EASTING						
CB17	5527090.110	633971.196	230.908	228.558	13+135.58	23.4m - 250mm	229.158	227.966
CB18	5527123.189	633997.245	230.063	227.713	13+177.46	23.5m - 250mm	228.313	227.826
CB19	5527147.603	634036.600	229.744	227.394	13+222.39	11.9m - 300mm	227.994	227.598
CB20	5527148.478	634037.441	229.744	227.594	13+048.03	4.8m - 250mm	228.194	227.994

NOTE: ALL COORDINATES SHOWN ON DRAWINGS ARE NAD 83 UTM. COMBINED SCALE FACTOR TO OBTAIN GROUND DISTANCES IS 0.9997688

**APEGM**  
Certificate of Authorization  
**Dillon Consulting Limited (MB)**  
No. 1789 Date: \_\_\_\_\_

LOCATION UNDERGROUND	APPROVED STRUCTURES	B.M. 654265 (633392.694, 5525026.192) ELEV. 232.518
SUPPLY, U/G STRUCTURES COMMITTEE	DATE	
NOTE: LOCATION OF UNDERGROUND STRUCTURES AS SHOWN ARE BASED ON THE BEST INFORMATION AVAILABLE, BUT NO GUARANTEE IS GIVEN THAT ALL EXISTING UTILITIES ARE SHOWN OR THAT THE GIVEN LOCATIONS ARE EXACT. CONFIRMATION OF EXISTENCE AND EXACT LOCATION OF ALL SERVICES MUST BE OBTAINED FROM THE INDIVIDUAL UTILITIES BEFORE PROCEEDING WITH CONSTRUCTION.		

NO.	REVISIONS	DATE	BY
2	ISSUED FOR TENDER	04/29/09	TJP
1	SUBMITTED FOR 95% REVIEW	02/13/09	TJP

DESIGNED BY	MRD
DRAWN BY	MRD/TJH
CHECKED BY	ORIGINAL SIGNED BY TARAN J. PETERS
APPROVED BY	ORIGINAL SIGNED BY DAVE P. KRAHN
HOR. SCALE	1 : 250
VERTICAL	1 : 10
DATE	04/29/09

**DILLON CONSULTING**

RELEASED FOR CONSTRUCTION  
ORIGINAL SIGNED BY RANDY FINGAS  
DATE 04/29/09

ENGINEER'S SEAL  
PROVINCE OF MANITOBA  
M.R. DOUCET  
04-29-09  
Member 22306  
REGISTERED PROFESSIONAL ENGINEER  
CONSULTANT PROJECT NO. 088813

**THE CITY OF WINNIPEG TRANSIT DEPARTMENT**

Winnipeg

SOUTHWEST RAPID TRANSIT CORRIDOR - STAGE 1  
TRANSITWAY CONSTRUCTION, DONALD/HARKNESS RECONSTRUCTION & ASSOCIATED WORKS

PAVING & GRADING - STRADBROOK AVE. - STA. 13+135 TO 13+260

CITY DRAWING NUMBER P-3299-29  
SHEET 29 OF 64  
CONSULTANT DRAWING NUMBER C3-C3011-T

G:\CAD\088813\Contract\Contract\_3-Donald Street\Roadway\CI-401-Paving-Grading.dwg