

- CONSTRUCTION NOTES:**
- CONTRACTOR SHALL TAKE PRECAUTIONARY STEPS TO AVOID DAMAGE FROM CONSTRUCTION ACTIVITIES TO EXISTING BOULEVARDS AND TREES WITHIN THE LIMITS OF CONSTRUCTION.
 - SEWER TO BE INSTALLED BY TRENCHLESS METHODS.
 - LOCATION OF EXISTING UTILITIES TO BE CONFIRMED IN THE FIELD BY THE CONTRACTOR.
 - LIMITS OF SIDEWALK RENEWALS TO BE FINALIZED IN THE FIELD BY THE CONTRACT ADMINISTRATOR.
 - BOULEVARD REPLACEMENT TO BE FINALIZED IN THE FIELD BY THE CONTRACT ADMINISTRATOR.
 - CONTRACTOR TO PLUG ANY ABANDONED PIPES THAT ARE BROKEN DURING CONSTRUCTION.
 - TRENCHES & EXCAVATIONS WITHIN 1 METRE OF A PAVED AREA INCLUDING SIDEWALKS SHALL BE CLASS 3 BACKFILL.
 - BACKFILL IN BOULEVARD TO BE CLASS 5.
 - SEE ROAD CONSTRUCTION DRAWINGS FOR CB INSTALLATION.

METRIC
WHOLE NUMBERS INDICATE MILLIMETRES
DECIMALIZED NUMBERS INDICATE METRES.

WARNING
IF POWER EQUIPMENT OR EXPLOSIVES ARE TO BE USED FOR EXCAVATION ON THIS PROJECT THE CONTRACTOR MUST:
1. NOTIFY THE GAS COMPANY OF THE PROPOSED LOCATION OF EXCAVATION.
2. TAKE PRECAUTION TO AVOID DAMAGE TO GAS COMPANY INSTALLATIONS. SEE PROVINCIAL REGULATION 210/72 FOR DETAILS.

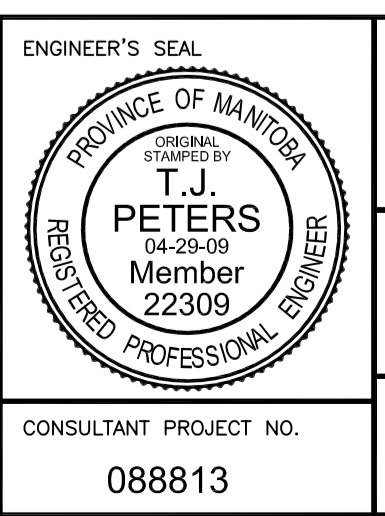
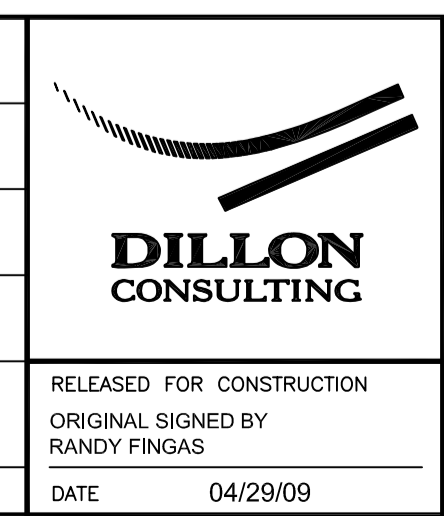
NOTE: CHAINAGES SHOWN ARE ALONG CL OF PIPE

COORDINATES		RIM ELEV.	#	STATION	INVERT			
NORTHING	EASTING				N	S	E	W
5527221.127	634110.533	229.580	MH12	1+224.57			226.913	226.943
5527273.377	634140.179	229.000	MH13	1+284.65	226.643			226.673

NOTE: ALL COORDINATES SHOWN ON DRAWINGS ARE NAD 83 UTM. COMBINED SCALE FACTOR TO OBTAIN GROUND DISTANCES IS 0.9997688



LOCATION UNDERGROUND	APPROVED STRUCTURES	B.M. 654265 (633392.694, 5525026.192) ELEV. 232.518	DESIGNED BY CLP
SUPV. U/G STRUCTURES COMMITTEE	DATE		DRAWN BY AJP
			CHECKED BY ORIGINAL SIGNED BY TARAN J. PETERS
			APPROVED BY ORIGINAL SIGNED BY DAVE P. KRAHN
			HOR. SCALE 1 : 250
			VERTICAL 1 : 50
2 ISSUED FOR TENDER	04/29/09	TJP	RELEASED FOR CONSTRUCTION
1 SUBMITTED FOR 95% REVIEW	02/13/09	TJP	ORIGINAL SIGNED BY RANDY FINGAS
NO. REVISIONS	DATE	BY	DATE 04/29/09



THE CITY OF WINNIPEG TRANSIT DEPARTMENT

SOUTHWEST RAPID TRANSIT CORRIDOR - STAGE 1
TRANSITWAY CONSTRUCTION, DONALD/HARKNESS
RECONSTRUCTION & ASSOCIATED WORKS

LDS - STRADBROOK TO QUEEN ELIZABETH
WAY - STA. 1+160 TO 1+310

CITY DRAWING NUMBER P-3299-54
SHEET 54 OF 64
CONSULTANT DRAWING NUMBER C3-U4005-T

G:\CAD\088813\Contract\Contract 3-Donald Street\Roadway\C1-413-LDS-Stradbroke to QEW.dwg