

- CONSTRUCTION NOTES**
- 1) CURB REPLACEMENT AS DIRECTED BY THE CONTRACT ADMINISTRATOR SHALL BE REPLACED AS MODIFIED OR AS DIRECTED BY THE CONTRACT ADMINISTRATOR
 - 2) ALL STREET RADIUS CURB UNDER 15M RADIUS SHALL BE REPLACED AS MODIFIED OR AS DIRECTED BY THE CONTRACT ADMINISTRATOR
 - 3) PAVEMENT REPAIRS SHOWN ARE ONLY A REPRESENTATIVE SAMPLE OF THE TENDERED QUANTITIES
 - 4) ASPHALT TIE-INS ON APPROACHES TO BE DETERMINED IN THE FIELD BY THE CONTRACT ADMINISTRATOR.
 - 5) ALL BULLNOSES TO HAVE SLOPED FACE.

WARNING

IF POWER EQUIPMENT OR EXPLOSIVES ARE TO BE USED FOR EXCAVATION ON THIS PROJECT THE CONTRACTOR MUST:

- 1) OBTAIN CLEARANCE FROM THE GAS UTILITY PRIOR TO EXCAVATION.
- 2) TAKE PRECAUTION TO AVOID DAMAGE TO GAS UTILITY INSTALLATIONS.

SEE PROVINCIAL REGULATION 210/72 FOR DETAILS

BID OPPORTUNITY NO. 1-2010

⊕	HYDRANT	⊕	---	LDS/WWS	---	---	NORTH GUTTER	---
⊙	VALVE	⊙	---	WATERMAIN	---	---	CENTER LINE	---
⊚	CURB STOP	⊚	---	GAS	---	---	SOUTH GUTTER	---
▨	PAVING STONE	▨	---	TRAFFIC SIGNALS	---	---	NORTH BOW	---
○	O.L.S.	●	---	CONCRETE REPAIR	---	---	SOUTH BOW	---
○	MANHOLE	●	---	CURB RENEWAL	---	---		---
□	CATCH BASIN	■	231.000	ELEVATIONS	231.000	---		---
△	CURB INLET	▲	---	PROPERTY LINE	---	---		---
+	HYDRO POLE	+	---	SURVEY BAR	---	---		---
⊕	TRAFFIC SIGNAL POLE	⊕	---	GEODETIC BENCH MARK	---	---		---
---	EXISTING	---	---	RAMP CURB	---	---		---
---	LEGEND - PLAN	---	---	---	---	---		---
---	PROPOSED	---	---	---	---	---		---
---	EXISTING	---	---	---	---	---		---
---	LEGEND - PROFILE	---	---	---	---	---		---
---	PROPOSED	---	---	---	---	---		---
---	EXISTING	---	---	---	---	---		---

LOCATION APPROVED UNDERGROUND STRUCTURES

DATE

NOTE: LOCATION OF UNDERGROUND STRUCTURES AS SHOWN ARE BASED ON THE BEST INFORMATION AVAILABLE. BUT NO GUARANTEE IS GIVEN THAT ALL EXISTING UTILITIES ARE SHOWN OR THAT THE GIVEN LOCATIONS ARE EXACT. CONFIRMATION OF EXISTENCE AND EXACT LOCATION OF ALL SERVICES MUST BE OBTAINED FROM THE INDIVIDUAL UTILITIES BEFORE PROCEEDING WITH CONSTRUCTION.

B.M. ELEV.	GBM 12-064		
	230.413		
NO.	REVISIONS	DATE	BY

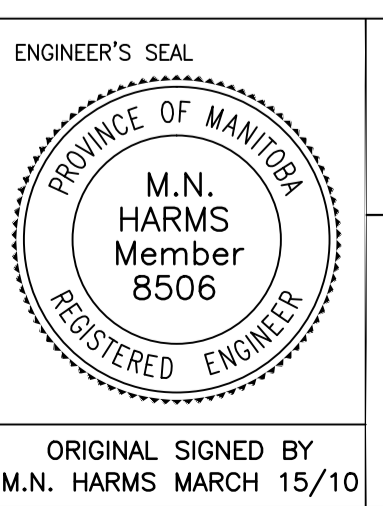
ENGINEERING DIVISION
TECHNOLOGY SERVICES BRANCH
 106 - 1155 PACIFIC AVE

DESIGNED BY: R.D.
 CHECKED BY: D.T./G.C.

DRAWN BY: R.D./R.M.
 APPROVED BY: M.H.

HOR. SCALE: 1 : 250
 VERTICAL: 1 : 10

DATE: 2010/03/12



THE CITY OF WINNIPEG
 PUBLIC WORKS DEPARTMENT

KIMBERLY AVENUE
 FROM HENDERSON HWY. TO BRAZIER ST.
 MAJOR REHABILITATION AND ASSOCIATED WORKS
 FROM STA. 2+00 TO STA. 3+50

CITY DRAWING NUMBER: SE-10-24
 SHEET 2 OF 3

12