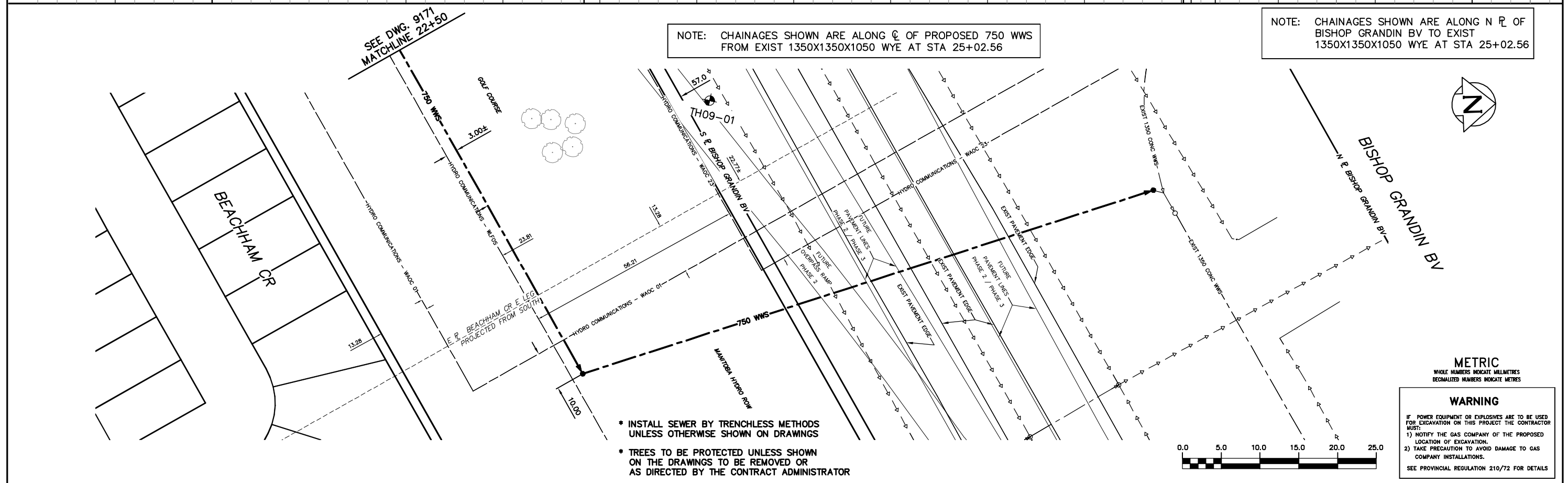


NOTE: CHAINAGES SHOWN ARE ALONG ϕ OF PROPOSED 750 WWS FROM EXIST 1350X1350X1050 WYE AT STA 25+02.56

NOTE: CHAINAGES SHOWN ARE ALONG N ϕ OF BISHOP GRANDIN BV TO EXIST 1350X1350X1050 WYE AT STA 25+02.56



- * INSTALL SEWER BY TRENCHLESS METHODS UNLESS OTHERWISE SHOWN ON DRAWINGS
- * TREES TO BE PROTECTED UNLESS SHOWN ON THE DRAWINGS TO BE REMOVED OR AS DIRECTED BY THE CONTRACT ADMINISTRATOR

METRIC
WHOLE NUMBERS INDICATE MILLIMETRES
DECIMALIZED NUMBERS INDICATE METRES

WARNING
IF POWER EQUIPMENT OR EXPLOSIVES ARE TO BE USED FOR EXCAVATION ON THIS PROJECT THE CONTRACTOR MUST:
1) NOTIFY THE GAS COMPANY OF THE PROPOSED LOCATION OF EXCAVATION.
2) TAKE PRECAUTION TO AVOID DAMAGE TO GAS COMPANY INSTALLATIONS.
SEE PROVINCIAL REGULATION 210/72 FOR DETAILS

200 WM	WATERMAIN	200 WM	SL, HYDRO	150 WM	WATERMAIN	150 WM	LOCATION APPROVED	B.M. ELEV.	FIELD BOOK #:	CITY OF WINNIPEG WATER AND WASTE ENGINEERING DIVISION		ENGINEER'S SEAL	THE CITY OF WINNIPEG WATER AND WASTE DEPARTMENT		SHEET 1 OF 5	
⊕	HYDRANT	⊕	MTS	⊕	HYDRANT	⊕	UNDERGROUND STRUCTURES			DESIGNED BY SC		ORIGINAL DRAWING SIGNED BY S.R.J. COURNOYER 10/09/16	WAVERLEY WEST INTERCEPTOR SEWER - PHASE 4		CITY DRAWING NUMBER	
⊙	VALVE	⊙	TRAFFIC SIGNALS	⊙	VALVE	⊙				DRAWN BY WKT		APPROVED BY KZ	BISHOP GRANDIN BOULEVARD		9170	
525 LDS	LAND DRAINAGE SEWER	525 LDS	GAS	50 GAS	300 LDS	300 LDS	DATE			HOR. SCALE 1:500		RELEASED FOR CONSTRUCTION	NORTH SIDE 535 m WEST OF WAVERLEY ST TO SOUTH SIDE BISHOP GRANDIN BLVD			
375 WWS	WASTEWATER SEWER	375 WWS	SURVEY BAR	250 WWS	250 WWS	250 WWS	NOTE:			VERTICAL SCALE 1:50		K.R. ZUREK	BID OPPORTUNITY : 132-2010			
○	MANHOLE	○	FENCE	×	⊕	⊕	LOCATION OF UNDERGROUND STRUCTURES AS SHOWN ARE BASED ON THE BEST INFORMATION AVAILABLE BUT NO GUARANTEE IS GIVEN THAT THE GIVEN LOCATIONS ARE EXACT. CONFIRMATION OF EXISTENCE AND EXACT LOCATION OF ALL SERVICES MUST BE OBTAINED FROM THE INDIVIDUAL UTILITIES BEFORE PROCEEDING WITH CONSTRUCTION.			NO. REVISIONS		DATE	2010 09 14	DATE	2010 09 16	
□	CATCH BASIN	□	POLE - HYDRO, MTS	⊕	GROUND ABOVE PIPE	⊕				DATE		2010 09 14	DATE	2010 09 16		
▽	CURB INLET	▽	CURB STOP	⊕	⊕	⊕				DATE		2010 09 14	DATE	2010 09 16		
⊕	JUNCTIONS	⊕	GUY ANCHOR	⊕	⊕	⊕				DATE		2010 09 14	DATE	2010 09 16		
⊕	CULVERT	⊕	LIGHT STANDARD	⊕	⊕	⊕				DATE		2010 09 14	DATE	2010 09 16		
⊕	ANODE	⊕	TREE	⊕	⊕	⊕				DATE		2010 09 14	DATE	2010 09 16		
EXISTING	LEGEND-PLAN	PROPOSED	EXISTING	LEGEND-PLAN	PROPOSED	EXISTING	LEGEND-PROFILE	PROPOSED		DATE		2010 09 14	DATE	2010 09 16		