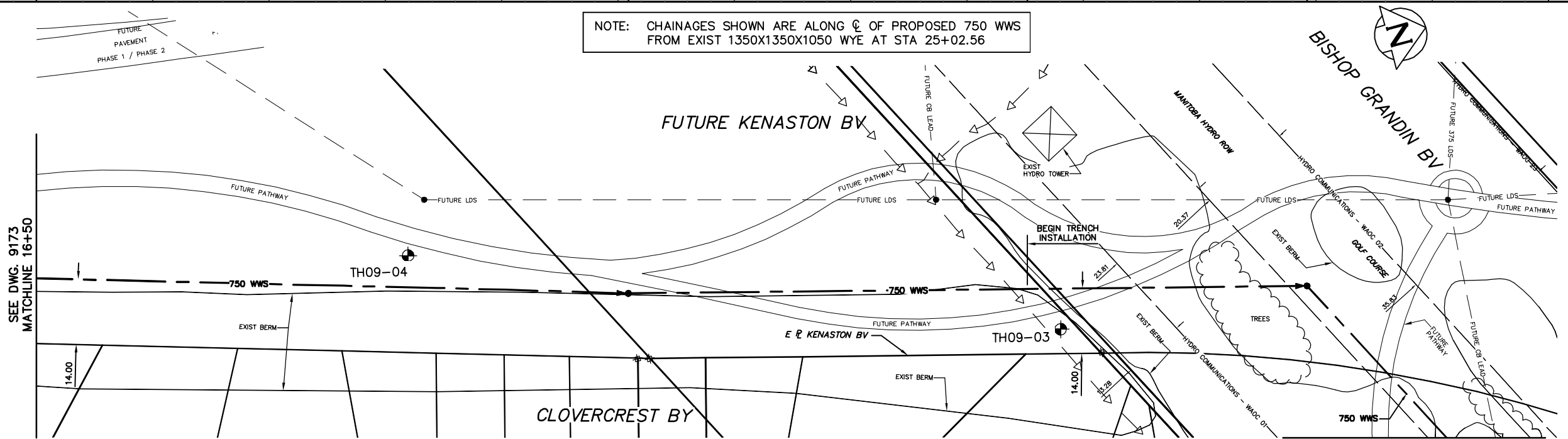


NOTE: CHAINAGES SHOWN ARE ALONG C OF PROPOSED 750 WWS FROM EXIST 1350X1350X1050 WYE AT STA 25+02.56



SEE DWG. 9173 MATCHLINE 16+50

FOR CONTINUATION SEE DWG. 9171

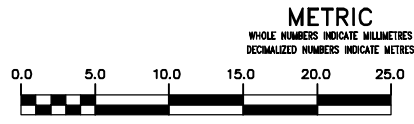
- * INSTALL SEWER BY TRENCHLESS METHODS UNLESS OTHERWISE SHOWN ON DRAWINGS
- * TREES TO BE PROTECTED UNLESS SHOWN ON THE DRAWINGS TO BE REMOVED OR AS DIRECTED BY THE CONTRACT ADMINISTRATOR

WARNING

IF POWER EQUIPMENT OR EXPLOSIVES ARE TO BE USED FOR EXCAVATION ON THIS PROJECT THE CONTRACTOR MUST:

- 1) NOTIFY THE GAS COMPANY OF THE PROPOSED LOCATION OF EXCAVATION.
- 2) TAKE PRECAUTION TO AVOID DAMAGE TO GAS COMPANY INSTALLATIONS.

SEE PROVINCIAL REGULATION 210/72 FOR DETAILS



200 WM	WATERMAIN	200 WM	SL, HYDRO	150 WM	WATERMAIN	150 WM
⊕	HYDRANT	⊕	MTS	⊕	HYDRANT	⊕
⊙	VALVE	⊙	TRAFFIC SIGNALS	⊙	VALVE	⊙
525 LDS	LAND DRAINAGE SEWER	525 LDS	50 GAS	300 LDS	LAND DRAINAGE SEWER	300 LDS
375 WWS	WASTEWATER SEWER	375 WWS	SURVEY BAR	250 WWS	WASTEWATER SEWER	250 WWS
○	MANHOLE	○	FENCE	×	C PROFILE	×
□	CATCH BASIN	□	* H * T	⊕	GROUND ABOVE PIPE	⊕
▽	CURB INLET	▽	POLE - HYDRO, MTS	⊕	C DITCH (NORTH & WEST)	⊕
⊕	JUNCTIONS	⊕	CURB STOP	⊕	C DITCH (SOUTH & EAST)	⊕
⊕	CULVERT	⊕	GUY ANCHOR	⊕	GUTTER (NORTH & WEST)	⊕
⊕	ANODE	⊕	LIGHT STANDARD	⊕	GUTTER (SOUTH & EAST)	⊕
⊕	LEGEND-PLAN	⊕	TREE	⊕	LEGEND-PROFILE	⊕
⊕	EXISTING	⊕	PROPOSED	⊕	EXISTING	⊕

LOCATION APPROVED UNDERGROUND STRUCTURES	B.M. ELEV.	FIELD BOOK #:
SUPPLY U/G STRUCTURES COMMITTEE		
DATE:		
NOTE:		
LOCATION OF UNDERGROUND STRUCTURES AS SHOWN ARE BASED ON THE BEST INFORMATION AVAILABLE BUT NO GUARANTEE IS GIVEN THAT ALL EXISTING UTILITIES ARE SHOWN OR THAT THE GIVEN LOCATIONS ARE EXACT. CONFIRMATION OF EXISTENCE AND EXACT LOCATION OF ALL SERVICES MUST BE OBTAINED FROM THE INDIVIDUAL UTILITIES BEFORE PROCEEDING WITH CONSTRUCTION.		
NO. REVISIONS	DATE	BY

CITY OF WINNIPEG WATER AND WASTE ENGINEERING DIVISION

DESIGNED BY: SC
CHECKED BY: SC

DRAWN BY: WKT
APPROVED BY: KZ

HOR. SCALE: 1:500
VERTICAL: 1:50

RELEASED FOR CONSTRUCTION: K.R. ZUREK
DATE: 2010 09 14
DATE: 2010 09 16

ENGINEER'S SEAL

ORIGINAL DRAWING SIGNED BY S.R.J. COUNROYER 10/09/16

BID OPPORTUNITY: 132-2010
FILENAME: 9172.dwg
PLOT DATE: 2010 09 20

THE CITY OF WINNIPEG WATER AND WASTE DEPARTMENT

WAVERLEY WEST INTERCEPTOR SEWER - PHASE 4

FUTURE KENASTON BOULEVARD

992 m WEST OF WAVERLEY ST TO 272 m SOUTH OF BISHOP GRANDIN BLVD

SHEET 3 OF 5
CITY DRAWING NUMBER 9172