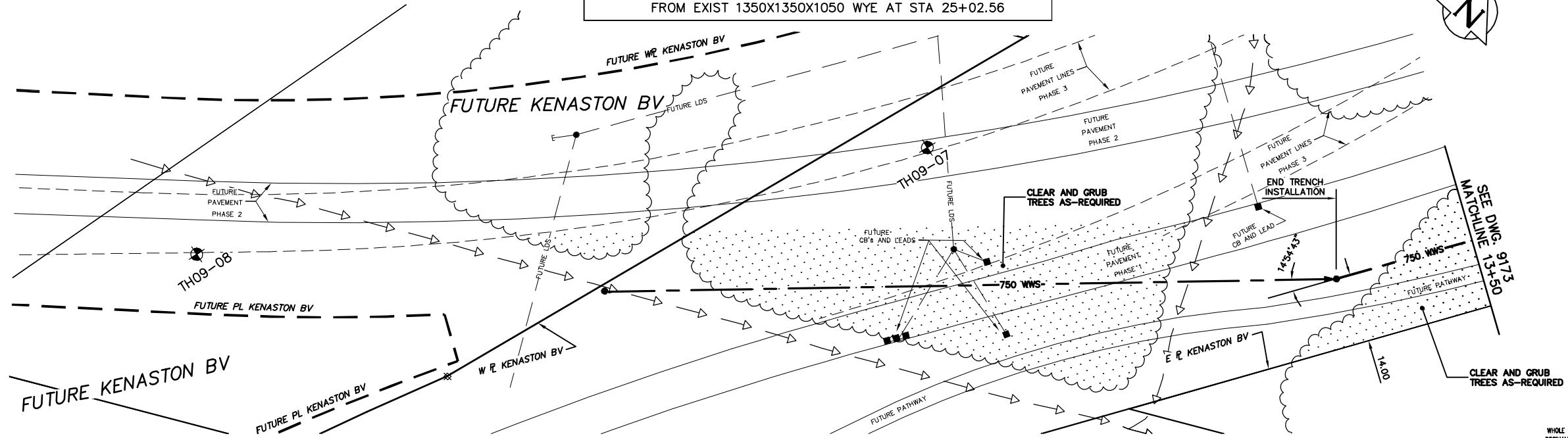


NOTE: CHAINAGES SHOWN ARE ALONG C OF PROPOSED 750 WWS FROM EXIST 1350X1350X1050 WYE AT STA 25+02.56



- * INSTALL SEWER BY TRENCHLESS METHODS UNLESS OTHERWISE SHOWN ON DRAWINGS
- * TREES TO BE PROTECTED UNLESS SHOWN ON THE DRAWINGS TO BE REMOVED OR AS DIRECTED BY THE CONTRACT ADMINISTRATOR

METRIC
WHOLE NUMBERS INDICATE MILLIMETRES
DECIMALIZED NUMBERS INDICATE METRES

WARNING
IF POWER EQUIPMENT OR EXPLOSIVES ARE TO BE USED FOR EXCAVATION ON THIS PROJECT THE CONTRACTOR MUST:
1) NOTIFY THE GAS COMPANY OF THE PROPOSED LOCATION OF EXCAVATION.
2) TAKE PRECAUTION TO AVOID DAMAGE TO GAS COMPANY INSTALLATIONS.
SEE PROVINCIAL REGULATION 210/72 FOR DETAILS

200 WM	WATERMAIN	200 WM	SL, HYDRO	150 WM	WATERMAIN	150 WM
⊕	HYDRANT	⊕	MTS	⊕	HYDRANT	⊕
⊙	VALVE	⊙	TRAFFIC SIGNALS	⊙	VALVE	⊙
525 LDS	LAND DRAINAGE SEWER	525 LDS	50 GAS	300 LDS	LAND DRAINAGE SEWER	300 LDS
375 WWS	WASTEWATER SEWER	375 WWS	SURVEY BAR	250 WWS	WASTEWATER SEWER	250 WWS
○	MANHOLE	○	FENCE	×	PROFILE	×
□	CATCH BASIN	□	POLE - HYDRO, MTS	▲	GROUND ABOVE PIPE	▲
▽	CURB INLET	▽	CURB STOP	△	☉ DITCH (NORTH & WEST)	△
⊕	JUNCTIONS	⊕	GUY ANCHOR	▽	☉ DITCH (SOUTH & EAST)	▽
⊕	CULVERT	⊕	LIGHT STANDARD	⊕	GUTTER (NORTH & WEST)	⊕
⊕	ANODE	⊕	TREE	⊕	GUTTER (SOUTH & EAST)	⊕
EXISTING	LEGEND-PLAN	PROPOSED	EXISTING	LEGEND-PLAN	PROPOSED	EXISTING
				LEGEND-PROFILE	PROPOSED	

LOCATION APPROVED
UNDERGROUND STRUCTURES

SUPPLY U/G STRUCTURES COMMITTEE DATE

NOTE:
LOCATION OF UNDERGROUND STRUCTURES AS SHOWN ARE BASED ON THE BEST INFORMATION AVAILABLE BUT NO GUARANTEE IS GIVEN THAT THE GIVEN LOCATIONS ARE EXACT. CONFIRMATION OF EXISTENCE AND EXACT LOCATION OF ALL SERVICES MUST BE OBTAINED FROM THE INDIVIDUAL UTILITIES BEFORE PROCEEDING WITH CONSTRUCTION.

B.M. ELEV.	FIELD BOOK #:
POSTED TO LIS	
NO. REVISIONS	DATE BY

CITY OF WINNIPEG
WATER AND WASTE
ENGINEERING DIVISION

DESIGNED BY: SC
CHECKED BY: SC

DRAWN BY: WKT
APPROVED BY: KZ

HOR. SCALE: 1:500
VERTICAL: 1:50

RELEASED FOR CONSTRUCTION
K.R. ZUREK
DATE: 2010 09 14
DATE: 2010 09 16

ENGINEER'S SEAL

ORIGINAL DRAWING SIGNED BY S.R.J. COURNOYER 10/09/16

BID OPPORTUNITY: 132-2010
FILENAME: 9174.dwg
PLOT DATE: 2010 09 20

THE CITY OF WINNIPEG
WATER AND WASTE DEPARTMENT

WAVERLEY WEST INTERCEPTOR
SEWER - PHASE 4
FUTURE KENASTON BOULEVARD

569 m SOUTH OF BISHOP GRANDIN BLVD TO
748 m SOUTH OF BISHOP GRANDIN BLVD

SHEET 5 of 5
CITY DRAWING NUMBER
9174